

Platinum.™

Service Manual

Gas Hob

AUPL-GWF91SS

IMPORTANT

The information contained in this Service Manual is intended for licensed service personnel only. If you have any questions please do not hesitate to contact our customer service team on 1300 985 815.

Notes

AUPL-GWF91SS version A & B can be identified via Serial Number or Burner Diffusers.

The serial Number will be located on the rating label stuck underneath the cooktop or included in your User Manual handover package.

Version (A) - Up until Serial Number [MD-D101-00XXX].

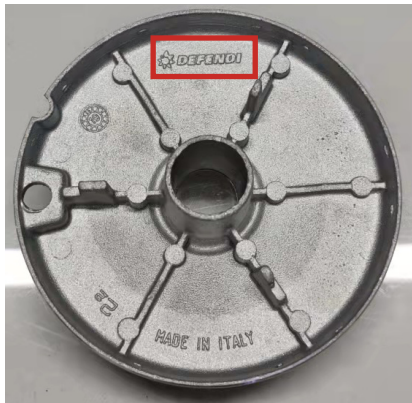
Version (B) - From Serial Number [MD-D136-00XXX to MD-D921-00XXX].

To identify via Burner diffusers, remove any burner cap off any diffuser.

Turn the Diffuser upside down and view branding:

DEFENDI- please refer to Exploded View Version A & Part List Version A

SABAF - please refer to Exploded View Version B & Part List Version B



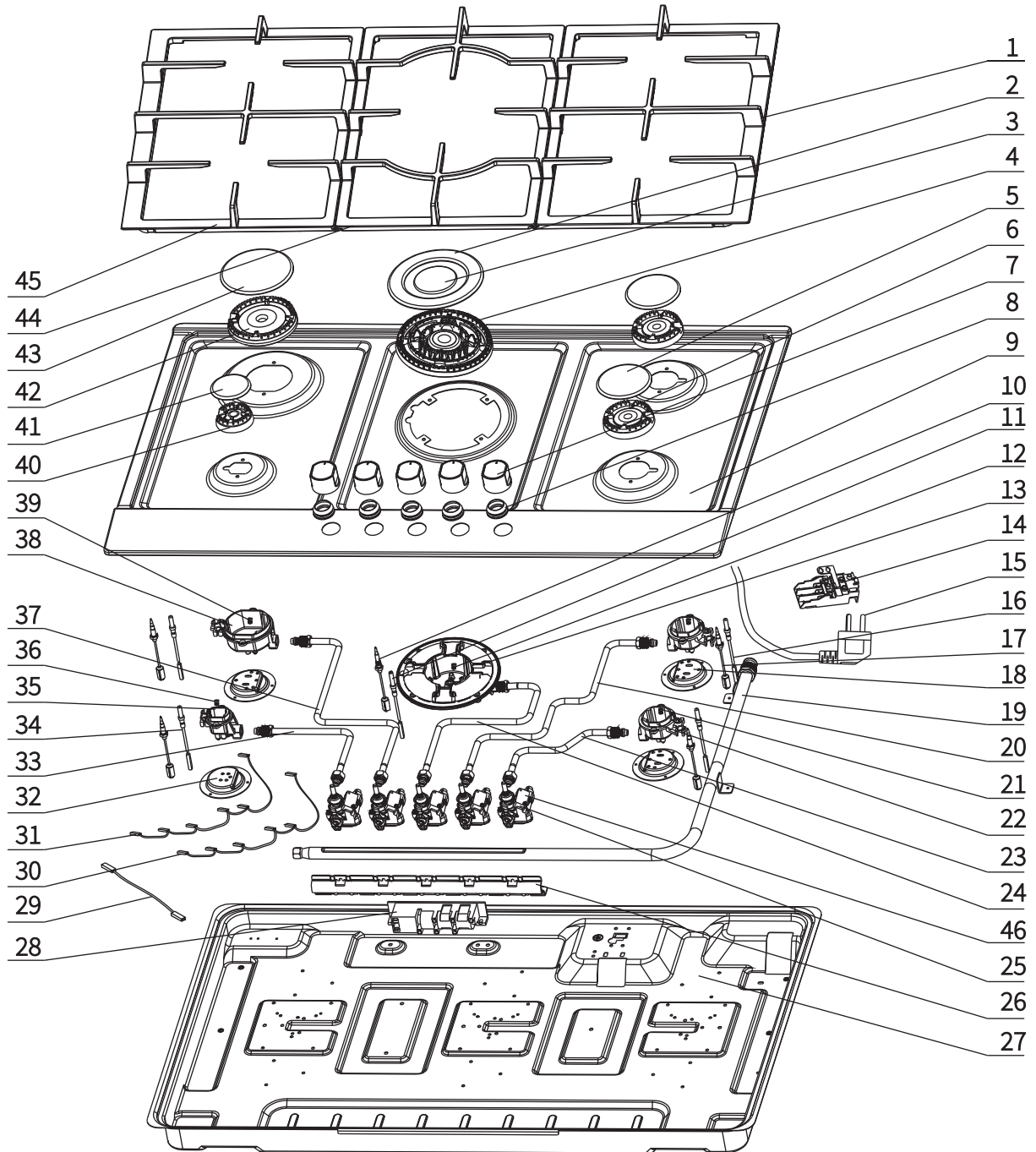
(A)



(B)

Please contact our customer service team for further support if required.

Exploded View Version (A) - Defendi



Parts List- Version (A) - Defendi

ID	Part Number	Description
1	2299315	Right trivet (900mm)
2	2299327	Wok outer burner cap
3	2299328	Wok inner burner cap
4	2299329	Wok burner diffuser
5	2299321	Semi-rapid burner cap
6	2299322	Semi-rapid burner diffuser
7	2299407	Knob - Brushed Silver
8	2299403	Gasket - top plate knob cutouts
9	2201102	Top plate - stainless steel (Platinum)
10	2299516	Thermocouple FFD - wok burner
11	2299519	Ignition candle - wok burner (600mm)
12	2299652	Gas injector Ø 1.72 - wok burner
13	2299330	Wok burner cup (base)
14	2299513	Electrical terminal block
15	2299512	Flexible power cord - AUS 10A
16,34	2299527	Ignition candle - rapid,semi-rapid & aux burner (850mm)
17	2299524	Thermocouple FFD - rapid, semi-rapid and aux. burners (650mm)
18	2299103	Burner cup support - rapid & semi-rapid
19	2299615	Gas Inlet manifold
20	2299616	Gas pipe - rear right semi-rapid burner
21	2299651	Gas injector Ø 1.15 - semi-rapid burner
22	2299323	Semi-rapid burner cup (base)
23	2299617	Gas pipe - front right semi-rapid burner
24	2299618	Gas pipe - wok burner
25,46	2299600	Gas valve, FFD - aux. burner & Ignition microswitch
	2299601	Gas valve, FFD - semi-rapid burner & Ignition microswitch
	2299602	Gas valve, FFD - rapid burner & Ignition microswitch
	2299603	Gas valve, FFD - wok burner & Ignition microswitch
26	2299105	Bracket for gas valves
27	2299106	Bottom plate
28	2299520	Ignition generator - 5 points
29	2299507	Connection wire
30	2299521	Wire for microswitches 1
31	2299522	Wire for microswitches 2
32	2299104	Burner cup support - aux.
33	2299619	Gas pipe - front left aux. burner
35	2299320	Aux. burner cap (base)
36	2299621	Gas injector Ø 0.85 - aux. burner

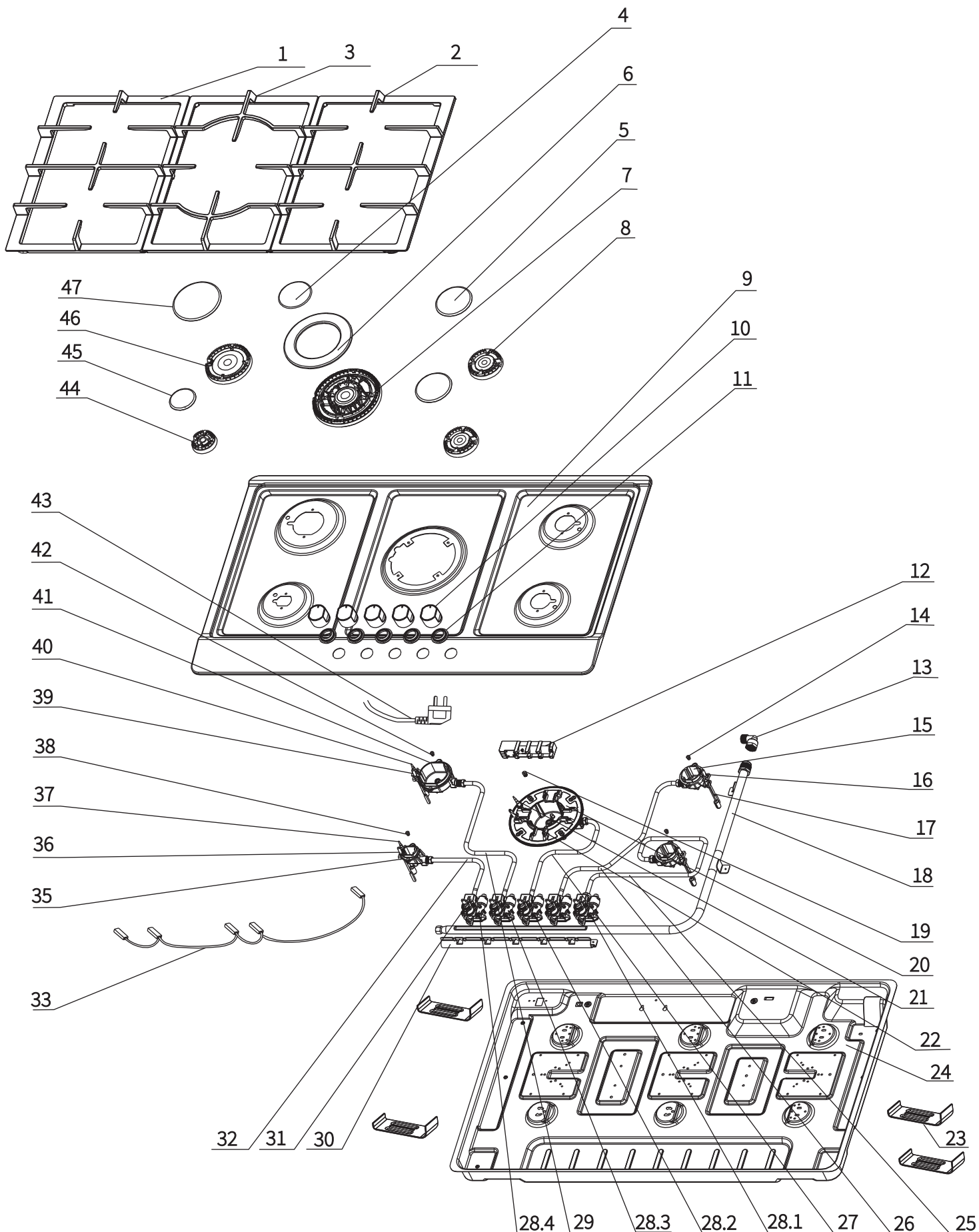
Parts List Version (A) - Defendi

ID	Part Number	Description
37	2299620	Gas pipe - rear left rapid burner
38	2299326	Rapid burner cup (base)
39	2299613	Gas injector Ø 1.50 - rapid burner
40	2299319	Aux. burner diffuser
41	2299318	Aux. burner cup
42	2299325	Rapid burner diffuser
43	2299324	Rapid burner cup
44	2299317	Central trivet
45	2299316	Left trivet (900mm)
ULPG Kit	2299634	Gas injector Ø 0.72 - semi-rapid burner
	2299657	Gas injector Ø 0.93 - rapid burner (& aux burner)
	2299636	Gas injector Ø 1.04 - wok burner
	2299629	Gas injector Ø 0.53 - aux. burner
	2299638	Test point - gas pressure
	2299107	Mounting bracket
	2299078	Wok Support Trivet - Ring
	2299637	Gas regulator - Laite
	2299639	Elbow - gas fitting
	2299917	Rubber Foot

Consumption Table - Version A

AUPL-GWF91SS	Natural Gas			Universal LPG		
	Inj. diam. (mm)	MJ/h	Gas pressure	Inj. diam. (mm)	MJ/h	Gas pressure
Wok burner x 1	1.72	13.68	1.0kPa	1.04	13.68	2.75kPa
Rapid burner x 1	1.50	10.80	1.0kPa	0.93	10.80	2.75kPa
Semi-rapid burner x 2	1.15	6.30	1.0kPa	0.72	6.30	2.75kPa
Auxiliary burner x 1	0.85	3.60	1.0kPa	0.53	3.60	2.75kPa
Total NHGC	40.68			40.68		

Exploded View Version (B) - Sabaf



Parts List Version (B) - Sabaf

ID	Part Number	Description
1	2299316	Left trivet (900mm)
2	2299315	Right trivet (900mm)
3	2299317	Central trivet
4	2299312	Wok inner burner cap
5	2299305	Semi-rapid burner cap
6	2299311	Wok outer burner cap
7	2299306	Semi-rapid burner diffuser
8	2299313	Wok burner diffuser
9	2201103	Top plate - stainless steel (Platinum)
10	2299407	Knob - Brushed Silver
11	2299403	Gasket - top plate knob cutouts
12	2299584	Ignition generator - 5 points
13	2299639	Elbow - gas fitting
14	2299651	Gas injector - Ø 1.15 - semi-rapid burner
15	2299307	Semi-rapid burner cup (base)
17, 37, 40	2299524	Thermocouple FFD - rapid, semi-rapid and aux. burners (650mm)
18	2299615	Gas Inlet manifold
19	2299652	Gas injector - Ø1.72 - wok burner
20	2299314	Wok burner cup (base)
21	2299516	Thermocouple FFD - wok burner
22	2299519	Ignition candle - wok burner (350mm)
23	2299107	Mounting bracket
24	2299121	Bottom plate
25	2299668	Gas pipe - front right semi-rapid burner
26	2299616	Gas pipe - rear right semi-rapid burner
27	2299669	Gas pipe - wok burner
28.1	2299654	Gas valve, FFD - rapid burner
28.2	2299662	Gas valve, FFD - aux. burner
28.3	2299655	Gas valve, FFD - semi-rapid burner
28.4	2299653	Gas valve, FFD - wok burner
29	2299620	Gas pipe - rear left rapid burner
30	2299105	Bracket for gas valves
31	2299587	Wire for microswitches
32	2299619	Gas pipe - front left aux. burner
33	2299348	Microswitches wiring
35	2299304	Aux. burner cup (base)
16, 36, 39	2299527	Ignition candle - rapid, semi-rapid & aux. burners (850mm)

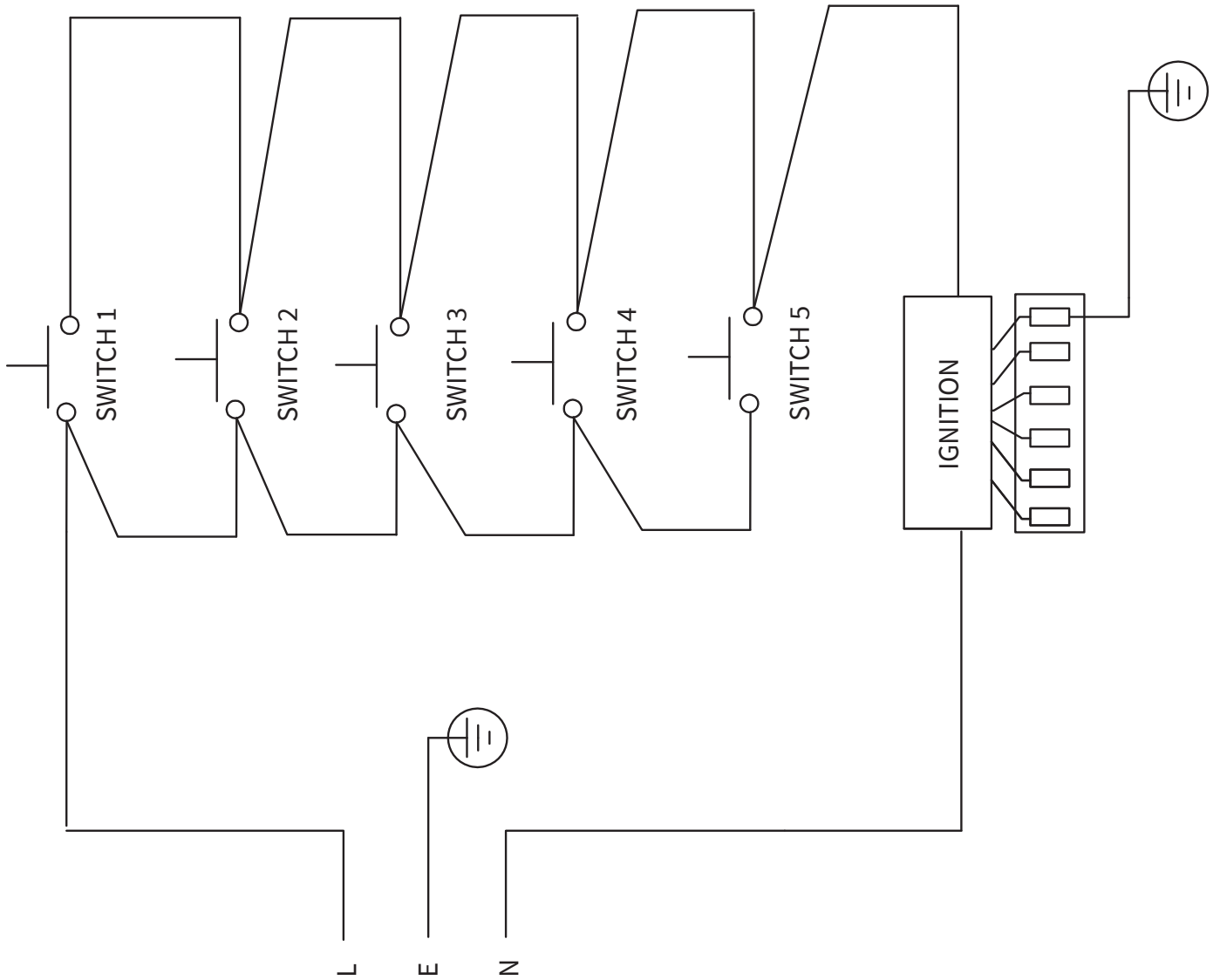
Parts List Version (B)- Sabaf

ID	Part Number	Description
38	2299657	Gas injector - Ø0.93 - aux burner
41	2299310	Rapid burner cup (base)
42	2299613	Gas injector - Ø1.50 - rapid burner
43	2299581	Flexible power cord - AUS 10A
44	2299303	Aux. burner diffuser
45	2299302	Aux. burner cap
46	2299309	Rapid burner diffuser
47	2299308	Rapid burner cap
ULPG Kit	2299630	Gas injector - Ø 0.68 - semi-rapid burner
	2299659	Gas injector - Ø 0.90 - rapid burner
	2299660	Gas injector - Ø 1.00 - wok burner
	2299650	Gas injector - Ø 0.58 - aux.burner
	2299638	Test point - gas pressure
	2299078	Wok Support Trivet - Ring
	2299637	Gas regulator - Laite
	2299917	Rubber Foot

Consumption Table - Version B

AUPL-GWF91SS AUPL-GWF92SS	Natural Gas			Universal LPG		
	Inj. diam. (mm)	MJ/h	Gas pressure	Inj. diam. (mm)	MJ/h	Gas pressure
Wok burner x 1	1.72	13.50	1.0kPa	1.00	13.50	2.75kPa
Rapid burner x 1	1.50	10.80	1.0kPa	0.90	10.80	2.75kPa
Semi-rapid burner x 2	1.15	6.30	1.0kPa	0.68	6.30	2.75kPa
Auxiliary burner x 1	0.93	4.30	1.0kPa	0.58	4.30	2.75kPa
Total NHGC		41.20			41.20	

Wiring Diagram



Platinum.™

CONTACT DETAILS

Australia

Platinum Appliances

Customer care

☎ 1300 985 815

✉ customercare@platinumappliances.com.au

🌐 platinumappliances.com.au

Spare parts & Manuals

✉ customercare@platinumappliances.com.au

🌐 service.platinumappliances.com.au

📍 PO Box 7785
Norwest, NSW 2153

Platinum is committed to ongoing research and development. Every effort has been made to ensure all information in this service manual is correct at time of going to print. Dimensions should be used as a reference only and actual dimensions should be taken from the physical product only.

Manufacturer reserves the right to change specifications without notice.