

Platinum.™

Service Manual

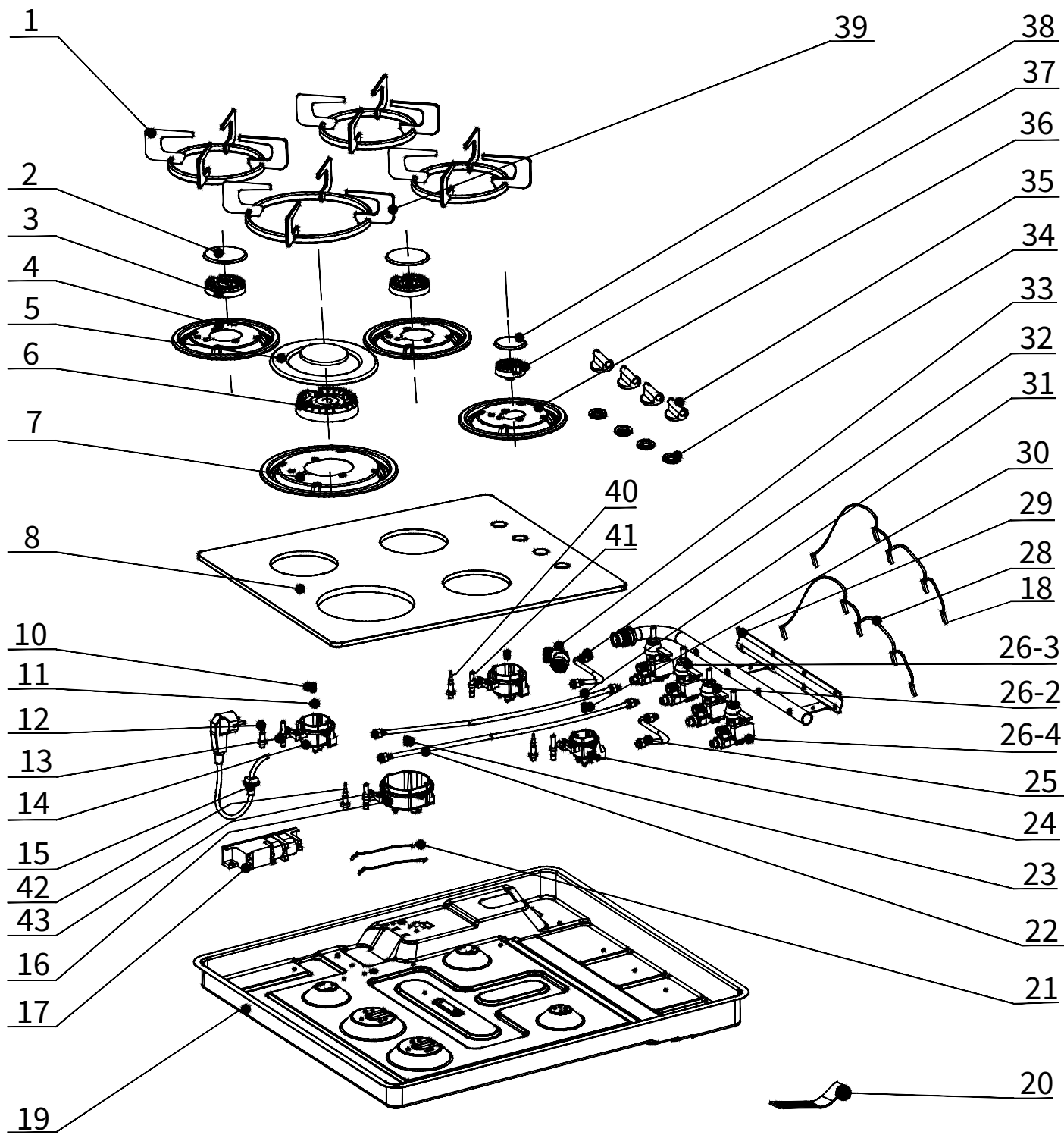
Glass Gas Hob

AUPL-GWF62G

IMPORTANT

The information contained in this Service Manual is intended for licensed service personnel only. For the latest service manuals visit service.platinumappliances.com.au.

Exploded View



Parts List

ID	Part Number	Description
1	2299331	Rapid and semi-rapid trivet
2	2299350	Semi-rapid burner cap
3	2299354	Semi-rapid burner diffuser
5.1	2299351	Wok outer burner cap
5.2	2299349	Wok inner burner cap
6	2299355	Wok burner diffuser
4,7,8,36	2201902	Glass panel assembly with (semi rapid,wok &aux)drip plates - Platinum
10	2299651	Gas injector Ø1.15 - semi-rapid burner
12,24	2299524	Thermocouple FFD - aux./rapid/semi-rapid burners (650mm)
13,41	2299527	Ignition candle - aux./rapid/semi-rapid burners (850mm)
14	2299358	Semi-rapid burner cup
15	2299581	Flexible power cord + 10APlug
16	2299359	Wok burner cup
17	2299582	Ignition generator - 4 points
18	2299509	Wire for microswitches - long
20	2299107	Mounting bracket
23	2299652	Gas injector Ø1.72 - wok burner
24	2299360	Aux. burner cup
26-2	2299655	Gas valve, FFD - wok burner
26-3	2299654	Gas valve, FFD - semi-rapid burner
26-4	2299653	Gas valve, FFD aux. burner
28	2299583	Microswitches wiring
30	2299650	Gas injector Ø0.58 - aux burner
33	2299639	Elbow - gas fitting
34	2299410	Silicone gasket - knob cutouts
35	2299411	Black knob - Stainless Steel cap
	*2299412	Full Black Knobs - Optional Set of 4
	**2299413	Full Black Knob - single
37	2299356	Aux. burner diffuser
38	2299352	Aux. burner cap
39	2299332	Wok Trivet
42	2299516	Thermocouple (Wok) - 500mm
43	2299519	Ignition candle (Wok) - 600mm

Parts List

ID	Part Number	Description
ULPG Kit	2299660	Gas injector - Ø1.00 - wok burner
	2299630	Gas injector - Ø0.68 - semi-rapid burner
	2299657	Gas injector - Ø0.93 - aux. burner (& rapid burner)
-	2299638	Test point - gas pressure
-	2299637	Gas regulator - Laite
-	2299639	Elbow - gas fitting
-	2299079	Wok Support Trivet - Ring

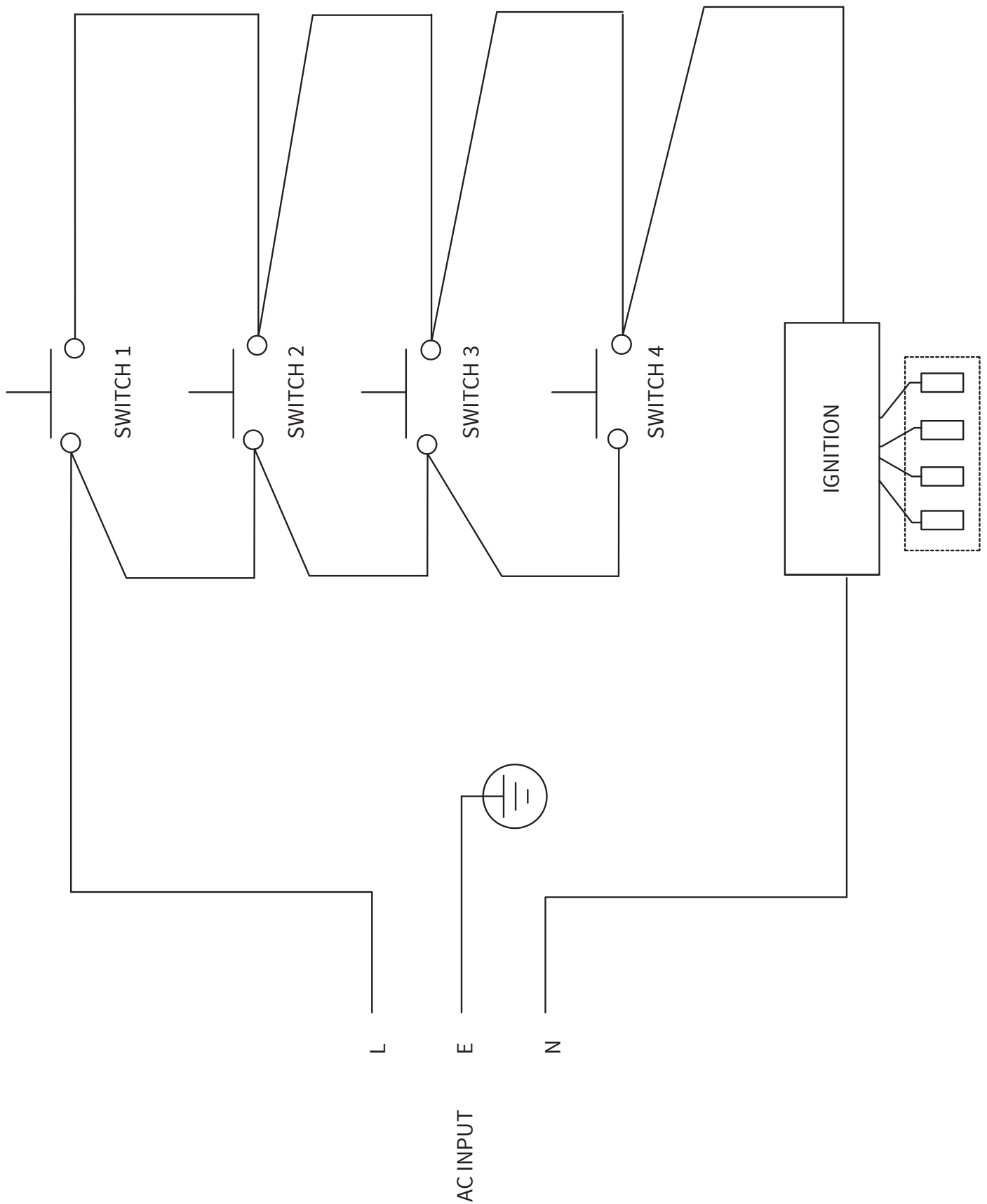
NOTE :

Part ID (4,7 & 36) - cannot be obtained individually

Consumption table

AUPL-GWF62G	Natural Gas			Universal LPG		
	Inj. diam. (mm)	MJ/h	Gas pressure	Inj. diam. (mm)	MJ/h	Gas pressure
Wok burner x 1	1.72	13.50	1.0kPa	1.00	13.50	2.75kPa
Semi-rapid burner x 2	1.15	6.30	1.0kPa	0.68	6.30	2.75kPa
Auxiliary burner x 1	0.93	4.30	1.0kPa	0.58	4.30	2.75kPa
Total NHGC	30.40			30.40		

Wiring Diagram



Platinum.™

CONTACT DETAILS

Australia

Platinum Appliances

Customer care

☎ 1300 985 815

✉ customercare@platinumappliances.com.au

🌐 platinumappliances.com.au

Spare parts & Manuals

✉ parts@platinumappliances.com.au

🌐 service.platinumappliances.com.au

📍 PO Box 7785
Norwest, NSW 2153

Platinum is committed to ongoing research and development. Every effort has been made to ensure all information in this service manual is correct at time of going to print. Dimensions should be used as a reference only and actual dimensions should be taken from the physical product only.

Manufacturer reserves the right to change specifications without notice.