

# Platinum.™

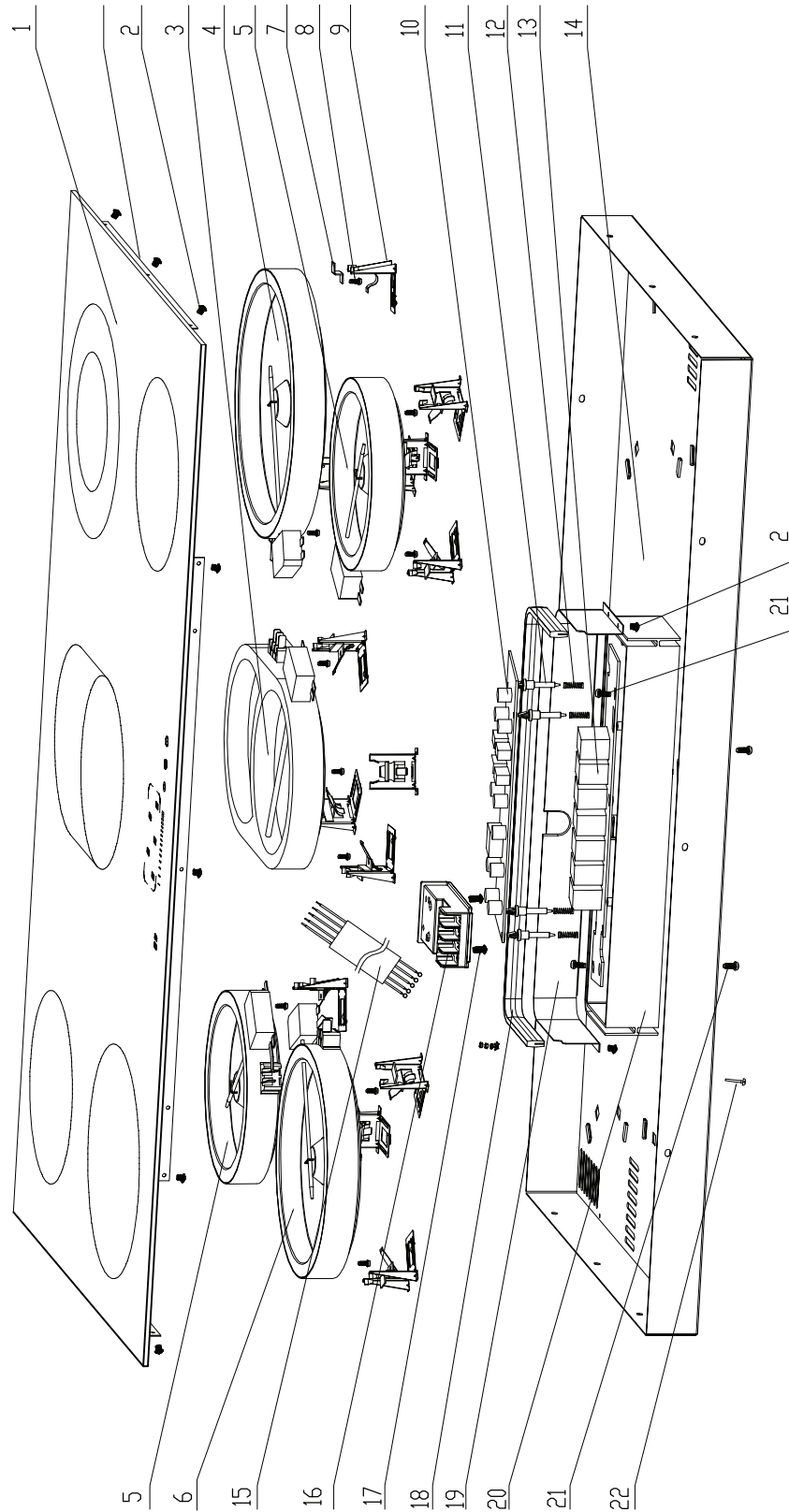
## Service Manual

900 Ceramic Cooktop Touch - Slide  
AUPL-CT90

### IMPORTANT

The information contained in this Service Manual is intended for licensed service personnel only. For the latest service manuals visit [service.platinumappliances.com.au](http://service.platinumappliances.com.au).

# Exploded View



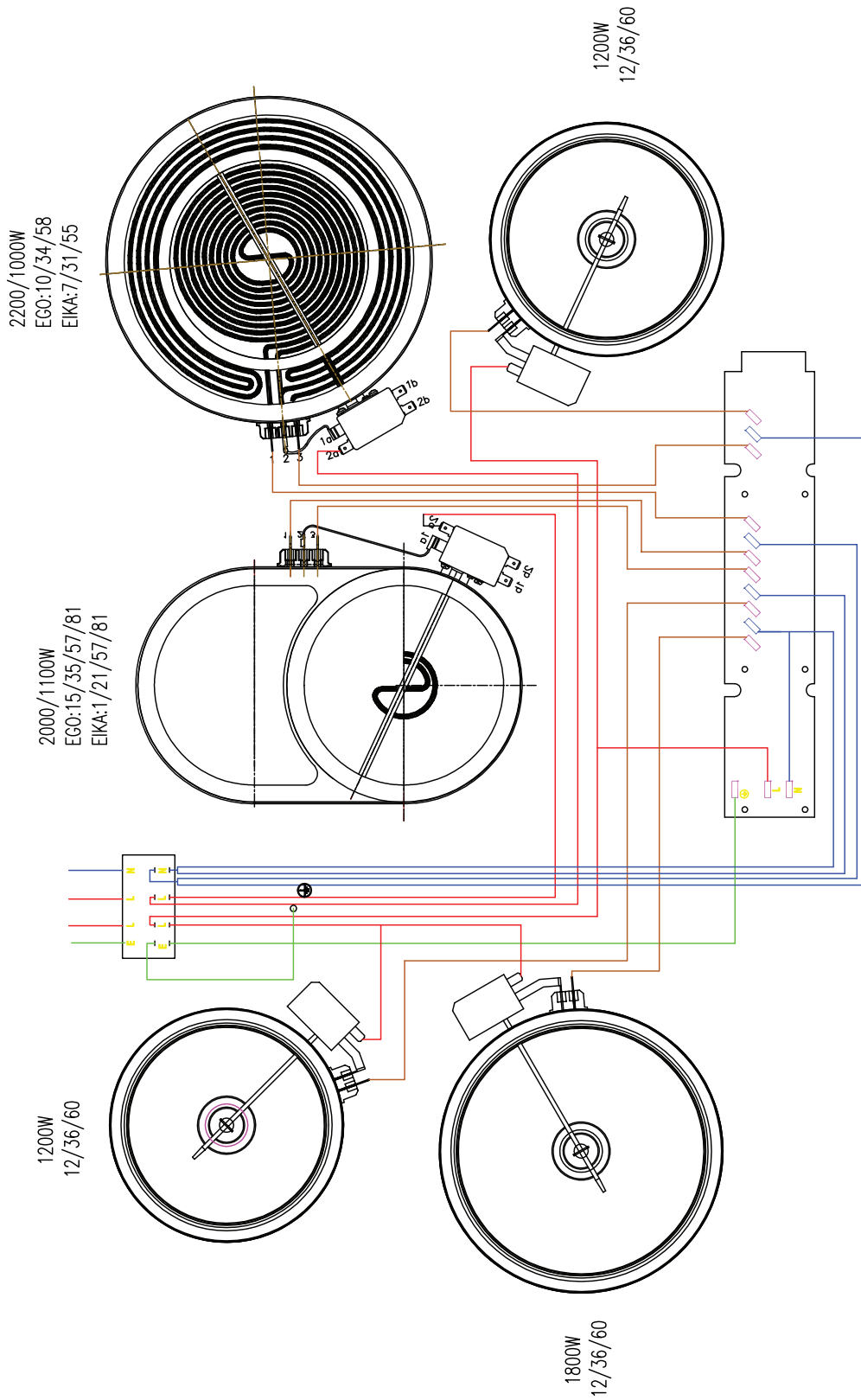
---

# Parts List

ID	Part Number	Description
1	2201105	Ceramic Glass Assembly - 900mm
3	2299564	Hot plate - left rear
4	2299565	Hot plate - left front
5	2299530	Hot Plate - 1200W (Ribbon)
6	2299529	Hot Plate - 1800W (Ribbon)
9	2299110	Spring clip for hot plate
10	2299555	Display board assembly
10**	2299562**	**Display board assembly
11	2299408	PCB spacer
12	2299409	Springs for PCB spacer
13	2299556	Main PCB assembly
13**	2299563**	**Main PCB assembly
15	2299557	Power Cord
16	2299531	Junction Box

\*\*NOTE: New PCBs were adopted from Product Serial Number MD-07870-00XXX.  
These new boards are not suitable for hobs with previous serial numbers and vice versa.

# Wiring Diagram



# Platinum.™

## CONTACT DETAILS

Australia

Platinum Appliances

### Customer care

☎ 1300 985 815

✉ [customercare@platinumappliances.com.au](mailto:customercare@platinumappliances.com.au)

🌐 [platinumappliances.com.au](http://platinumappliances.com.au)

### Spare parts & Manuals

✉ [parts@platinumappliances.com.au](mailto:parts@platinumappliances.com.au)

🌐 [service.platinumappliances.com.au](http://service.platinumappliances.com.au)

📍 PO Box 7785

Baulkham Hills BC, NSW 1755

Platinum is committed to ongoing research and development. Every effort has been made to ensure all information in this service manual is correct at time of going to print. Dimensions should be used as a reference only and actual dimensions should be taken from the physical product only.

Manufacturer reserves the right to change specifications without notice.