

PARTS MANUAL

Top Load Washing Machine

HWM110186S HA FJ

Product Code
62345-A

FJ

Haier

CONTENTS

INTRODUCTION	2
TOP DECK & CONSOLE COMPONENTS	3
CABINET & SPIN TUB COMPONENTS	5
BASE & MOTOR COMPONENTS	7

INTRODUCTION

BRAND	VOLTAGE	MODEL	PRODUCT CODE
Fisher & Paykel	220-240 50Hz	HWM110186S HA FJ	62345-A

MODELS

The models covered by this manual are listed on the front cover. The information detailed in this manual is subject to change without notice. The latest version is indicated by the reprint date and replaces any earlier editions.

KIT PARTS

Where a part number is shown against the descriptions for these kit components, they are also available as separate items. In addition, some parts may be supplied with these kits that are not available as separate items, and are therefore either not listed, or a part number is not shown against the part description in this manual.

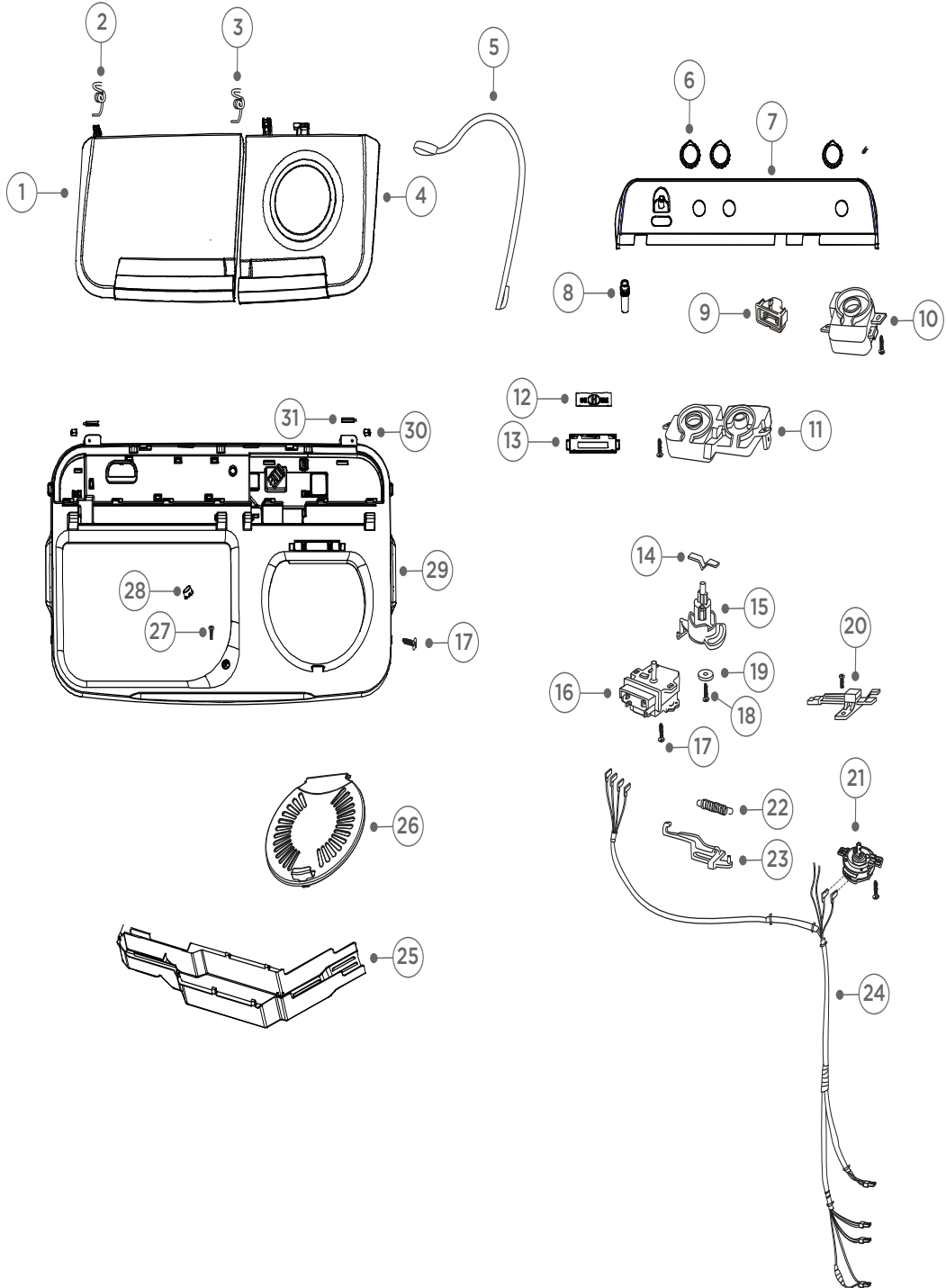
PARTS LIST KEY

NI	As a part reference, indicates the part is not illustrated on the diagram.
NOT USED	As a part number, indicates the diagram part reference is not used in this manual.
NS	As a part number, indicates the part is not servicable.

NZ

tel: 09 273 0600
fax: 09 273 0656
e-mail: nz.customercare@fisherpaykel.com
www.fisherpaykel.com/nz

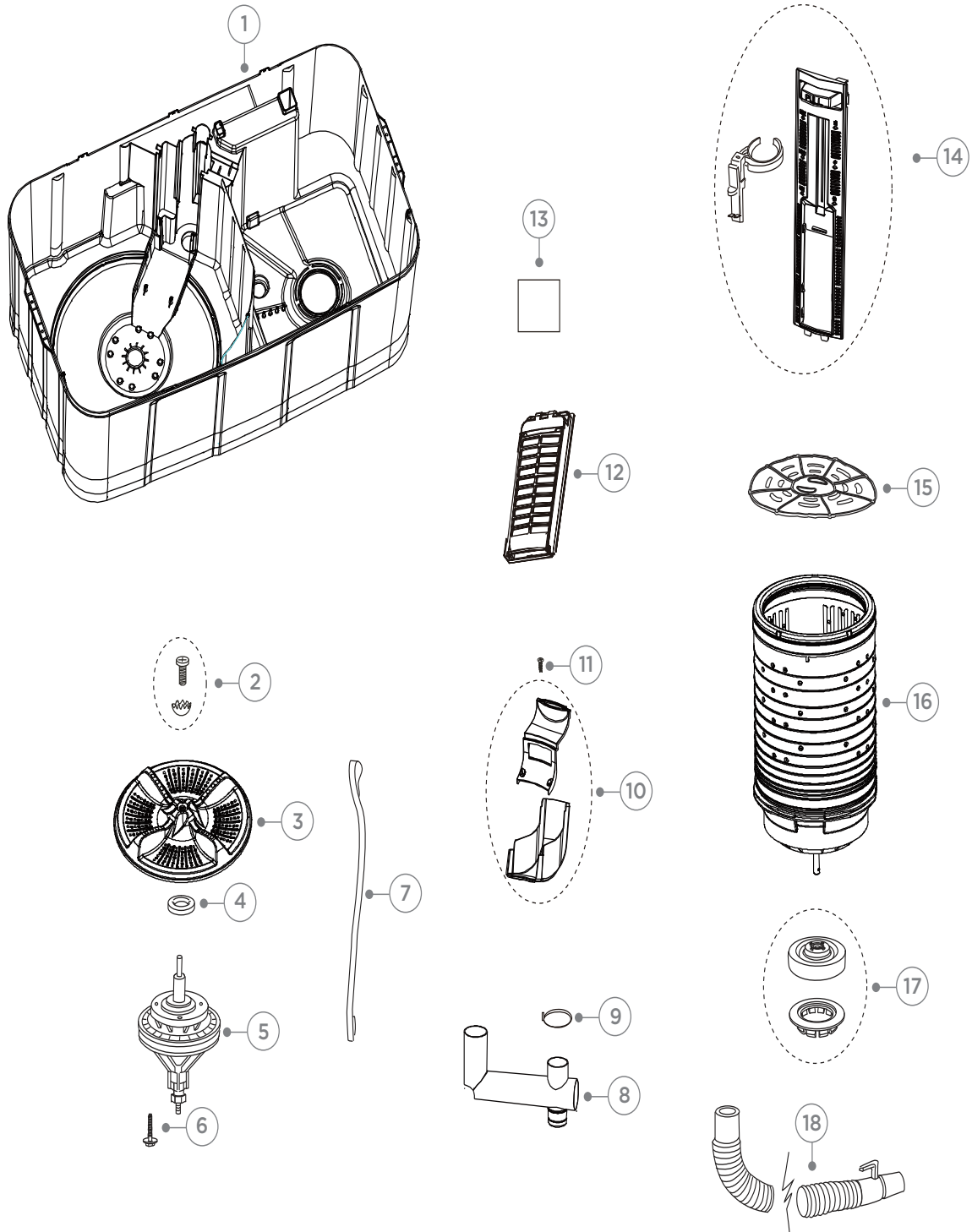
TOP DECK & CONSOLE COMPONENTS



TOP DECK & CONSOLE COMPONENTS

REFERENCE	PART NUMBER	PART DESCRIPTION
1	H0030814554C	WASH LID
2	H00330603008	SPRING SPIN TUB LID
3	H00330603016	SPRING WASH TUB
4	H0030814555B	SPIN TUB LID
5	H0030210167	BRAKE PULL BACK
6	H0030209909A	KNOB
7	H0030512608H	CONTROL PANEL
8	H0030203170	HOSE WATER INLET
9	H0030207112	SLIDING BLOCK
10	H0030201502B	SPIN SHELF
11	H0030201503B	HOUSING TIMER WASHER
12	H0030207111	HANDLE WATER CONTROL
13	H0030207132	SUPPORT
14	H00330312502	SPRING POSITION
15	H00330109018	CAM SELECTOR WASH
16	H0034000717B	TIMER
17	H00330802005A	SCREW
18	H00330802025A	SCREW FASTENING
19	H00330101096	WASHER GASKET
20	H00330503500B	SWITCH MICRO
21	H00330501013	TIMER SPIN
22	H00330603505	SPRING PULL BACK
23	H00330101095	ROD CONNECTING
24	H0030400517AW	WIRING HARNESS
25	H0030210028	BYPASS CHANNEL
26	H0030208948	SPIN LID
27	H00330802078A	SCREW TAPPING
28	H0030210055	SMALL BLOCK
29	H0030210033A	TOP DECK
30	H0030206422	SLEEVE
31	H0030206423	SHAFT TOP LID

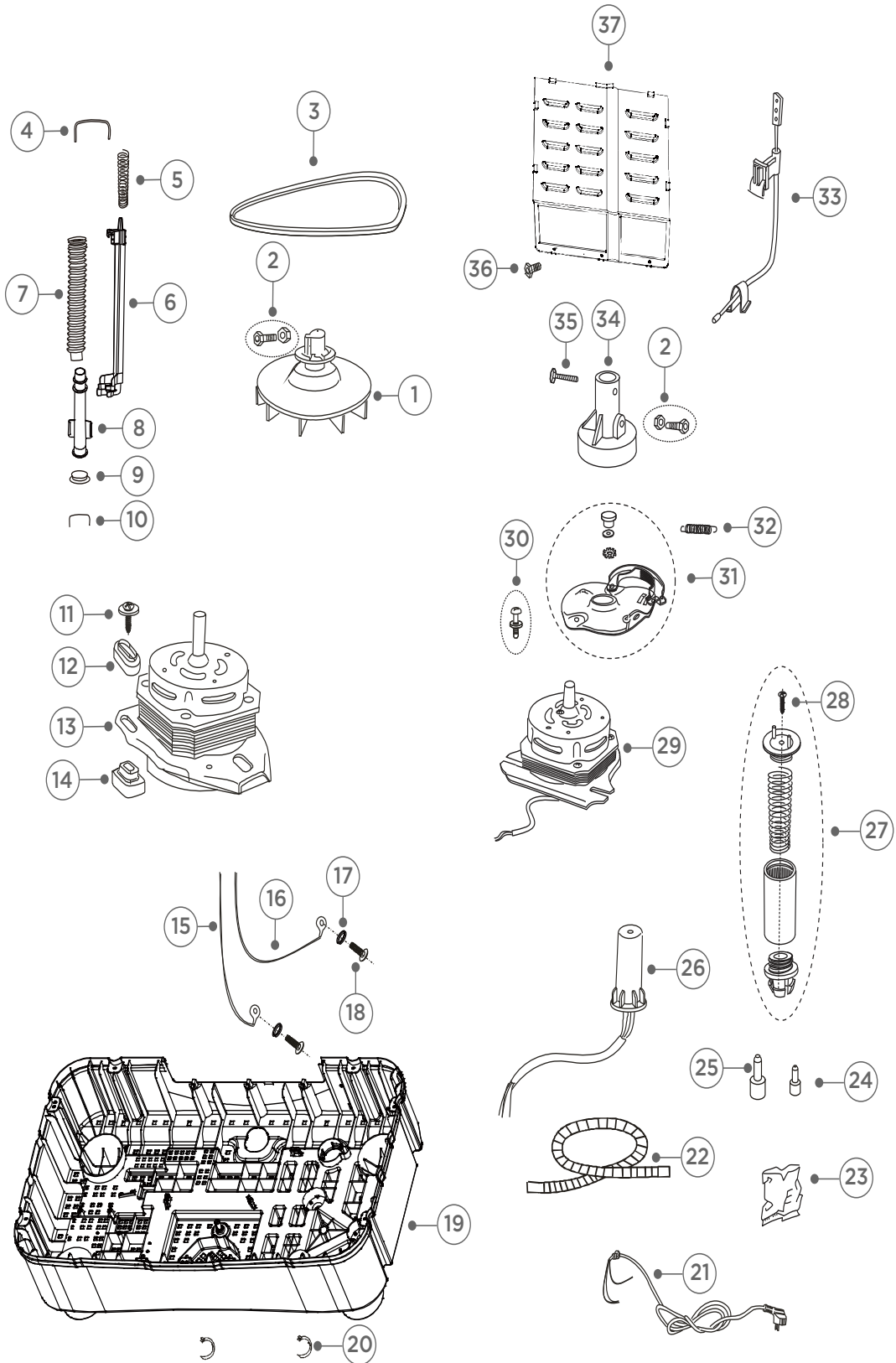
CABINET & SPIN TUB COMPONENTS



CABINET & SPIN TUB COMPONENTS

REFERENCE	PART NUMBER	PART DESCRIPTION
1	H0030205646	CABINET
2	H00330057500	BOLT ASSEMBLY PULSATOR
3	H0030205647A	PULSATOR
4	H00330303005	GASKET PULSATOR
5	H0030805911A	GEARBOX
6	H00330802062A	SCREW FASTENING
7	H0030205100	DRAIN PULLBACK BAND
8	H0030204246	HOSE TUB TO DRAIN PUMP
9	H00330201053	COVER DRAIN VALVE
10	H0030809704	VALVE COVER
11	H00330810009	SCREW SELF TAPPING
12	H0030204380	LINT FILTER
13	H0030515895	NAMEPLATE
14	H0030806098	FILTER OVERFLOW ASSY
15	H00330113501	INSERT SPIN BASKET GLAND
16	H0030802639F	SPIN TUB
17	H0030801662	BEARING SEAT A
18	H0030806105B	DRAIN HOSE

BASE & MOTOR COMPONENTS



BASE & MOTOR COMPONENTS

REFERENCE	PART NUMBER	PART DESCRIPTION
1	H0030100892	PULLEY WASH MOTOR
2	H00330812061A	BOLT & NUT LOCKING
3	H00330011028	BELT
4	H0030100916	LEVEL LOCATING UPPER
5	H0030100913	SPRING SPIN TUB LID
6	H0030204337	BRACKET PULL
7	H0030204249	HOSE CORRUGATED
8	H0030204334	BODY VALVE
9	H0030300399	GASKET AIRPROOF VALVE
10	H0030100917	LEVEL LOCATING LOWER
11	H00330802514A	SCREW MOTOR MOUNTING
12	H00330206507	BUSH UPPER
13	H00330504025A	WASH MOTOR
14	H00330206506	PAD A LOWER WASH MOTOR
15	H00330502089A	EARTH WIRE
16	H0030400330A	EARTH WIRE
17	H00330806003	WASHER STAR
18	H00330804001	SCREW EARTHING
19	H0030205648G	BASE FRAME COMPONENT
20	H0030201454	DRAIN HOSE FIXING HOOK
21	H0030400126	CORD MAINS
22	H00330009023	INLET HOSE
23	H0030508588R	SAFEGUARD BAG
24	H00330105504	BUSH B
25	H00330105503	BUSH A
26	H00330506023	CAPACITOR
27	H0030806350	DAMPER ASSY
28	H00330802017A	SCREW DAMPENER
29	H00330504028A	SPIN MOTOR
30	H00330812043B	SCREW TAPPING
31	H0030801587	BRAKE PAN ASSY
32	H00330603013	SPRING BRAKE PULLBACK
33	H00330028004A	BRAKE HINGE
34	H00330047001	CAM SPIN BRAKE
35	H00330812048A	SCREW
36	H00330802004A	SCREW
37	H0030205411B	BACK COVER

www.fisherpaykel.com

Copyright © Fisher & Paykel 2019. All rights reserved.
The product specifications in this manual apply to the specific model described at the date of issue. Under our policy of continuous product improvement, these specifications may change at any time. Only use this manual if the product code on the front matches the product code on the serial label of the product.

FJ

PRODUCT CODE: 62345-A 05.19