

PARTS MANUAL

Front Load Washing Machine

HWF12D1W1 HA AA

Product Code
61391-A

AU NZ

Haier

CONTENTS

INTRODUCTION	2
CONSOLE COMPONENTS	3
DISPLAY COMPONENTS	5
CABINET COMPONENTS	7
DOOR COMPONENTS	9
BOWLS & MOTOR COMPONENTS	11

INTRODUCTION

BRAND	VOLTAGE	MODEL	PRODUCT CODE
Fisher & Paykel	220-240 50Hz	HWF12D1W1 HA AA	61391-A

MODELS

The models covered by this manual are listed on the front cover. The information detailed in this manual is subject to change without notice. The latest version is indicated by the reprint date and replaces any earlier editions.

KIT PARTS

Where a part number is shown against the descriptions for these kit components, they are also available as separate items. In addition, some parts may be supplied with these kits that are not available as separate items, and are therefore either not listed, or a part number is not shown against the part description in this manual.

PARTS LIST KEY

NI	As a part reference, indicates the part is not illustrated on the diagram.
NOT USED	As a part number, indicates the diagram part reference is not used in this manual.
NS	As a part number, indicates the part is not servicable.

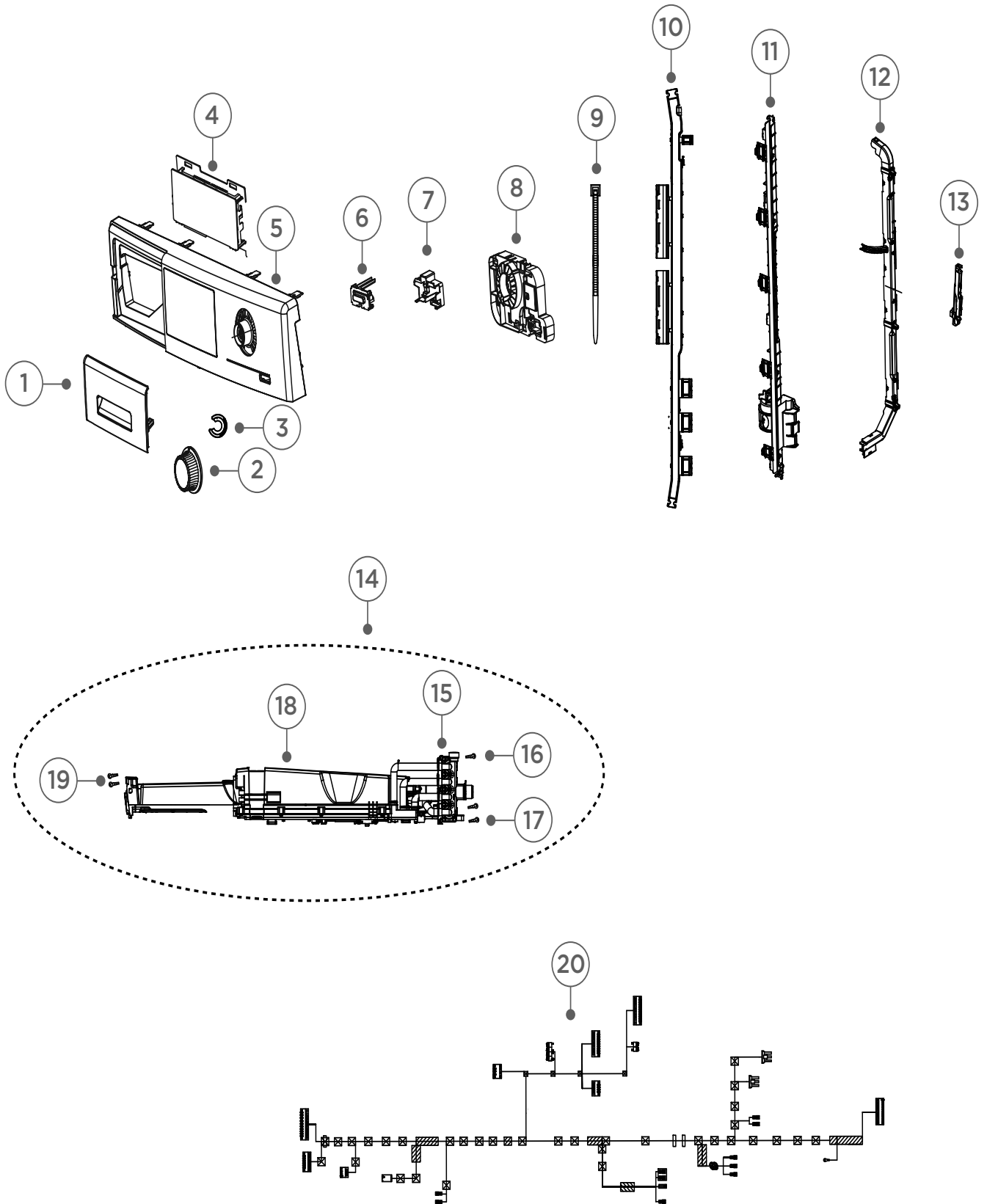
NZ

tel: 09 273 0600
fax: 09 273 0656
e-mail: nz.customercare@fisherpaykel.com
www.fisherpaykel.com/nz

AU

tel: 07 3826 9100
fax: 07 3826 9164
e-mail: aus/customercare@fisherpaykel.com
www.fisherpaykel.com/au

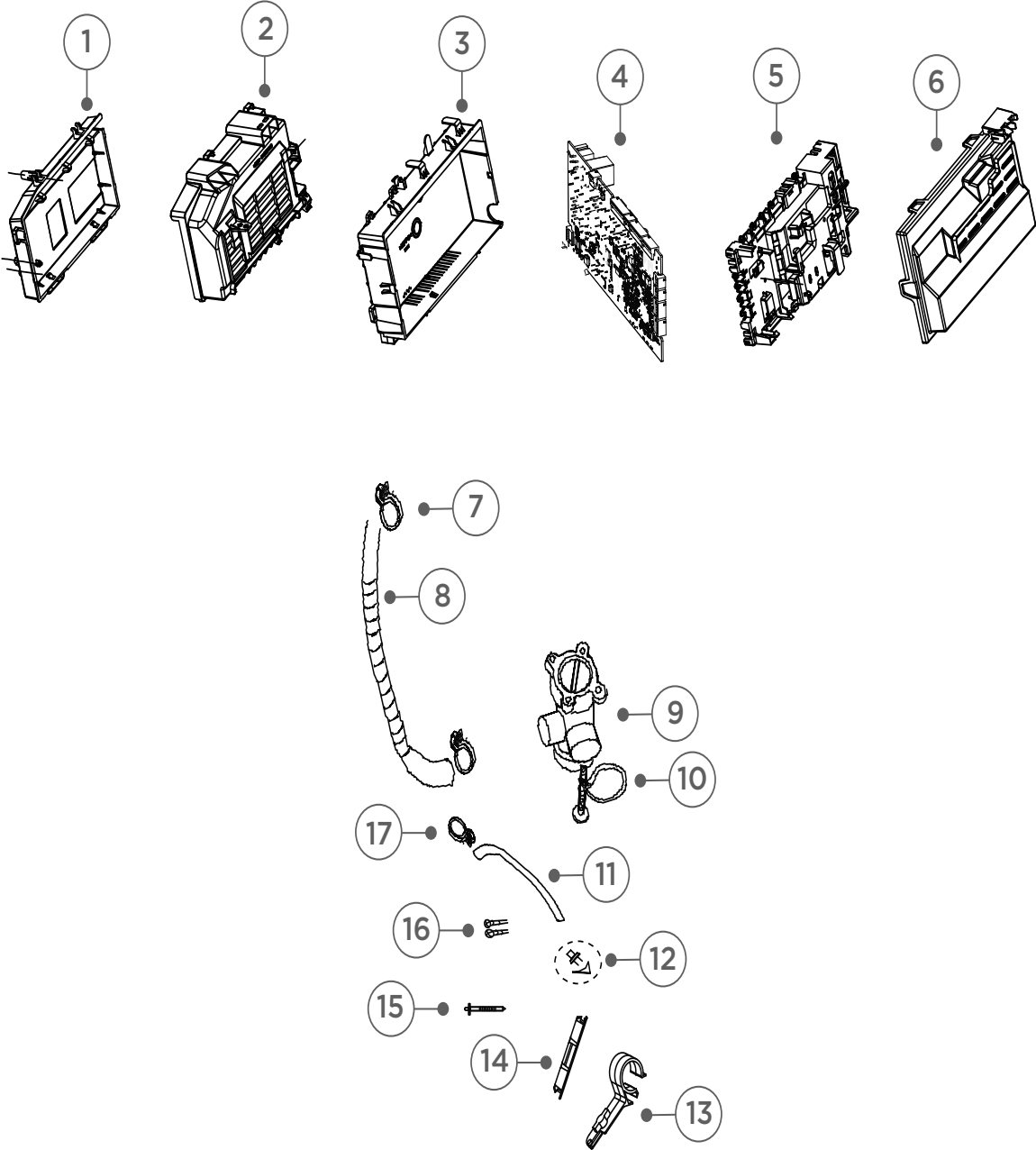
CONSOLE COMPONENTS



CONSOLE COMPONENTS

REFERENCE	PART NUMBER	PART DESCRIPTION
1	H0020508261H	PRINTED HANDLE
2	H0020205465	KNOB
3	H0020205405	CIRCLE SMALL DEC
4	H0021800165B	PC BOARD
5	H0020811053V	CONTROL PANEL
6	H0020508273D	POWER BUTTON
7	H0020205134	BUTTON HOLDER
8	H0020205692	PCB COVER
9	H00221150320000	ZIP TIE SMALL
10	H0020204861	GUIDE HARNESS
11	H0020204867	GUIDE MAIN HARNESS
12	H0020204866A	GUIDE HARNESS LONG
13	H0020204869	GUIDE HARNESS SHORT
14	H0020810516N	STORAGE TANK ASSEMBLY
15	H0024000404D	COLD WATER VALVE
16	H0020600179	BOLT
17	H00216920110008A	SCREW
18	H0020810517C	STORAGE BOX
19	H00330810033	SCREW CS 17 ST4 X 14
20	H0020400456B	WIRING HARNESS

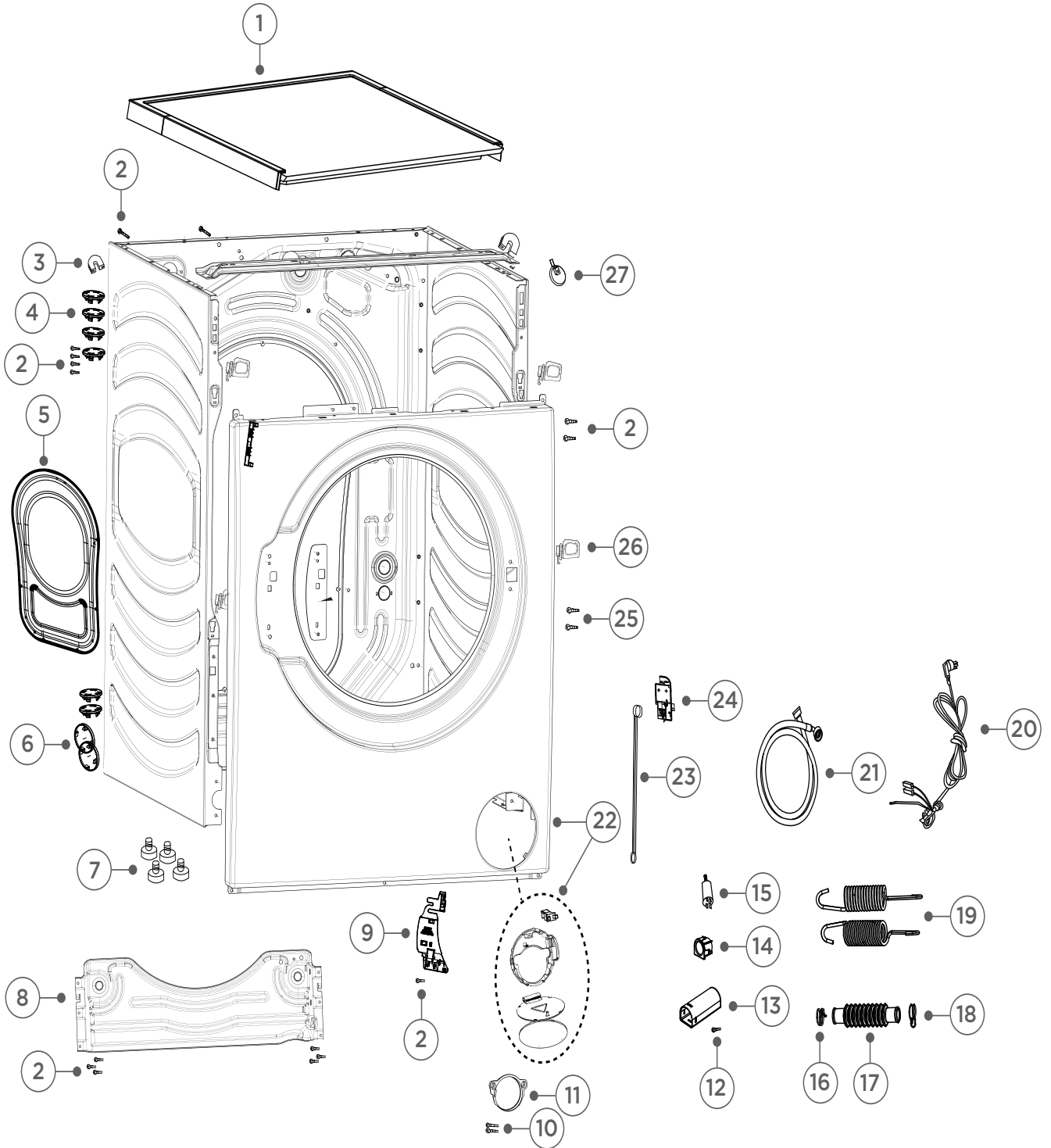
CONTROLLER & PUMP COMPONENTS



CONTROLLER & PUMP COMPONENTS

REFERENCE	PART NUMBER	PART DESCRIPTION
1	H0020205106	HOUSING B MOTOR CONTROLLER
2	H0021800035Q	PCB MOTOR CONTROLLER
3	H0020205034	POWER BOARD PLATE
4	H0021800139	POWER SUPPLY BOARD
5	H0020204946	POWER BOARD HOUSING
6	H0020204929	POWER BOARD COVER
7	H00215200004402	CLIP PRESSURE TUBE
8	H0020300148F	DRAIN HOSE
9	H0024000406A	DRAIN PUMP
10	H00215200294400A	CLAMP PUMP INNER HOSE
11	H0020300379A	HOSE PUMP DRAIN
12	H0020203918	CAP DRAINING HOSE
13	H0020204930	HOSE RETAINER
14	H0020204516	DRAIN HOSE HOLDER
15	H00297022120100	CLAMP PANDUIT
16	H00216910320111A	SCREW
17	H0020600271	HOSE CLAMP

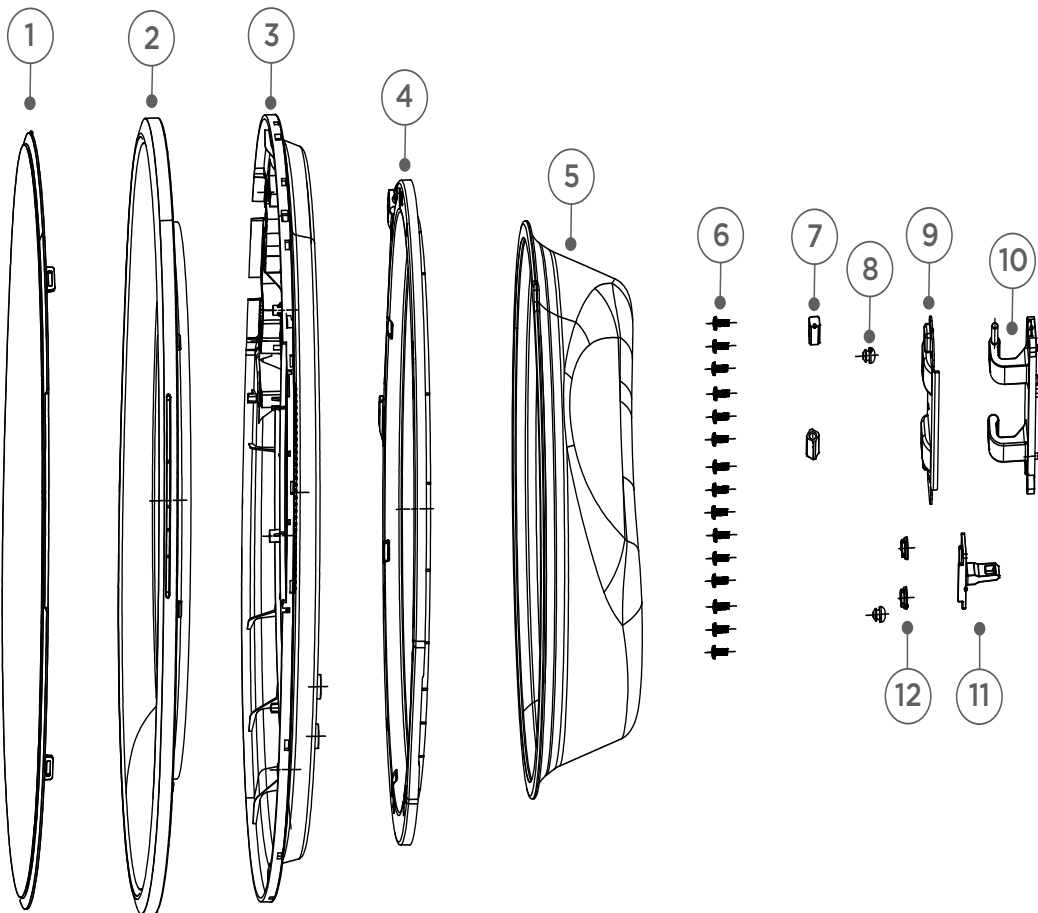
CABINET COMPONENTS



CABINET COMPONENTS

REFERENCE	PART NUMBER	PART DESCRIPTION
1	H0020811047B	TOP DECK
2	H0020600179	BOLT
3	H00214800503000	SUPPORT SPRING
4	H0020204932	PACKING BOLT HOLE COVER
5	H0020101203	BACK COVER
6	H0020204933	SHOCK ABSORBER FIXED SETS
7	H0020300170N	FOOT WH1060P1
8	H0020101003	CABINET SUPPORT
9	H0020204868	MOUNTING PLATE
10	H00330802008A	SCREW SELF TAPPING
11	H0020204889A	FILTER RING
12	H00216910320111A	SCREW
13	H0020204934	SUPPRESSOR COVER
14	H0020206316	SUPPRESSOR COVER
15	H0024000247K	SUPPRESSOR
16	H00218870330611A	CLAMP INLET HOSE
17	H0020300870	HOSE
18	H00218870330611A	CLAMP INLET HOSE
19	H0020600214B	SUSPENSION SPRING
20	H0020400196FE	POWER CORD
21	H0020300158A	HOSE INLET AW COLD
22	H0020809979A	FRONT PANEL
23	H0020204890	LEVER DOOR LOCK
24	H0024000128E	DOOR LOCK
25	H0020600357	SCREW
26	H0020204862	FRONT PANEL SUPPORT
27	H0024000399A	PRESSURE SWITCH WATER LEVEL

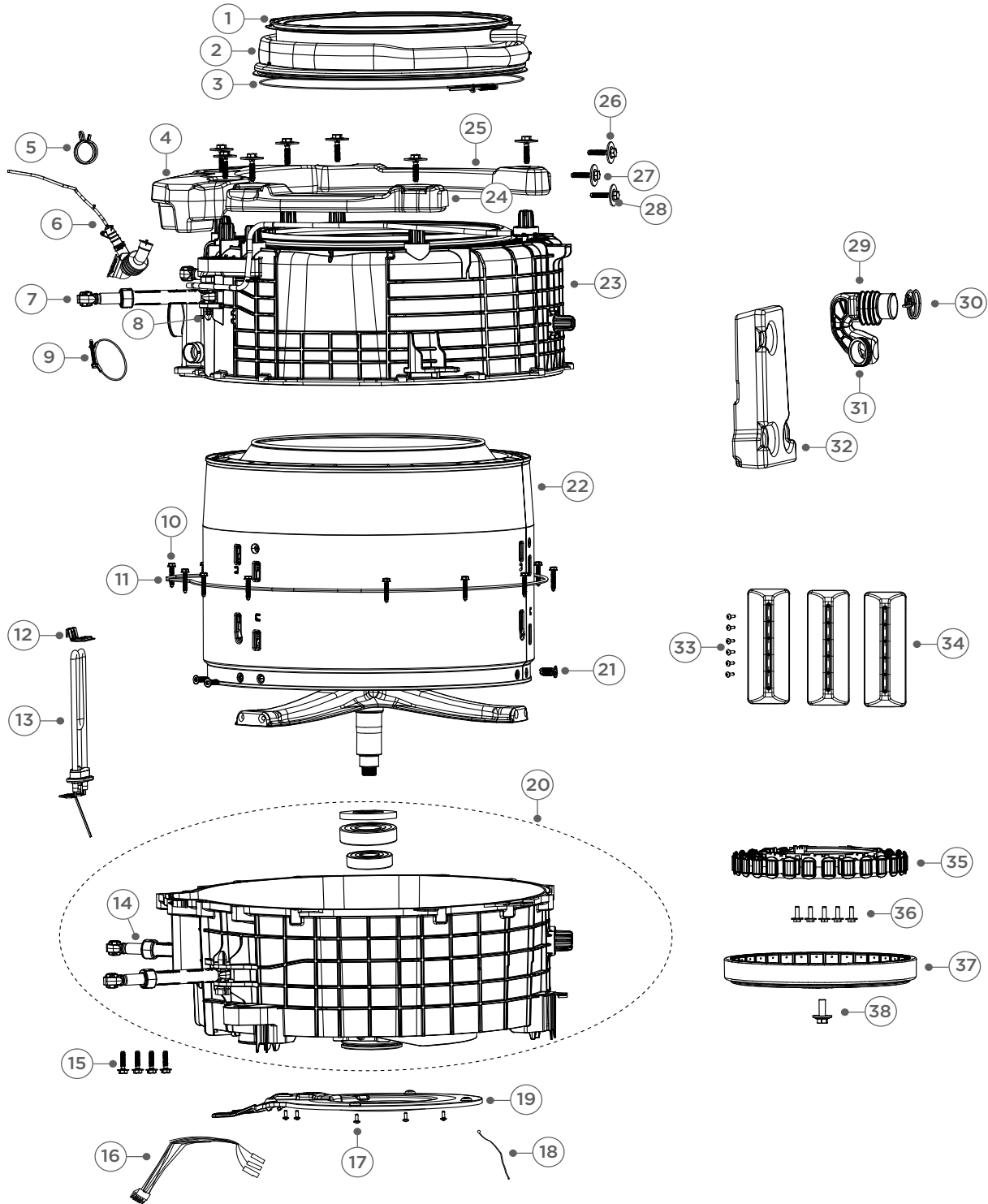
DOOR COMPONENTS



DOOR COMPONENTS

REFERENCE	PART NUMBER	PART DESCRIPTION
1	H0020204943	WINDOW SCREEN
2	H0020205695	DOOR WINDOW
3	H0020205696	WINDOW FRAME
4	H0020205625	MIDDLE FRAME
5	H0021400025	INNER WINDOW
6	H00330810009	SCREW SELF TAPPING
7	H0020204896	HINGE COVER
8	H0020301215	SCREW PLUG
9	H0020101420	HINGE PLATE
10	H0020101300B	DOOR HINGE
11	H0020100284A	HOOK DOOR LATCH
12	H0020300740A	SCREW

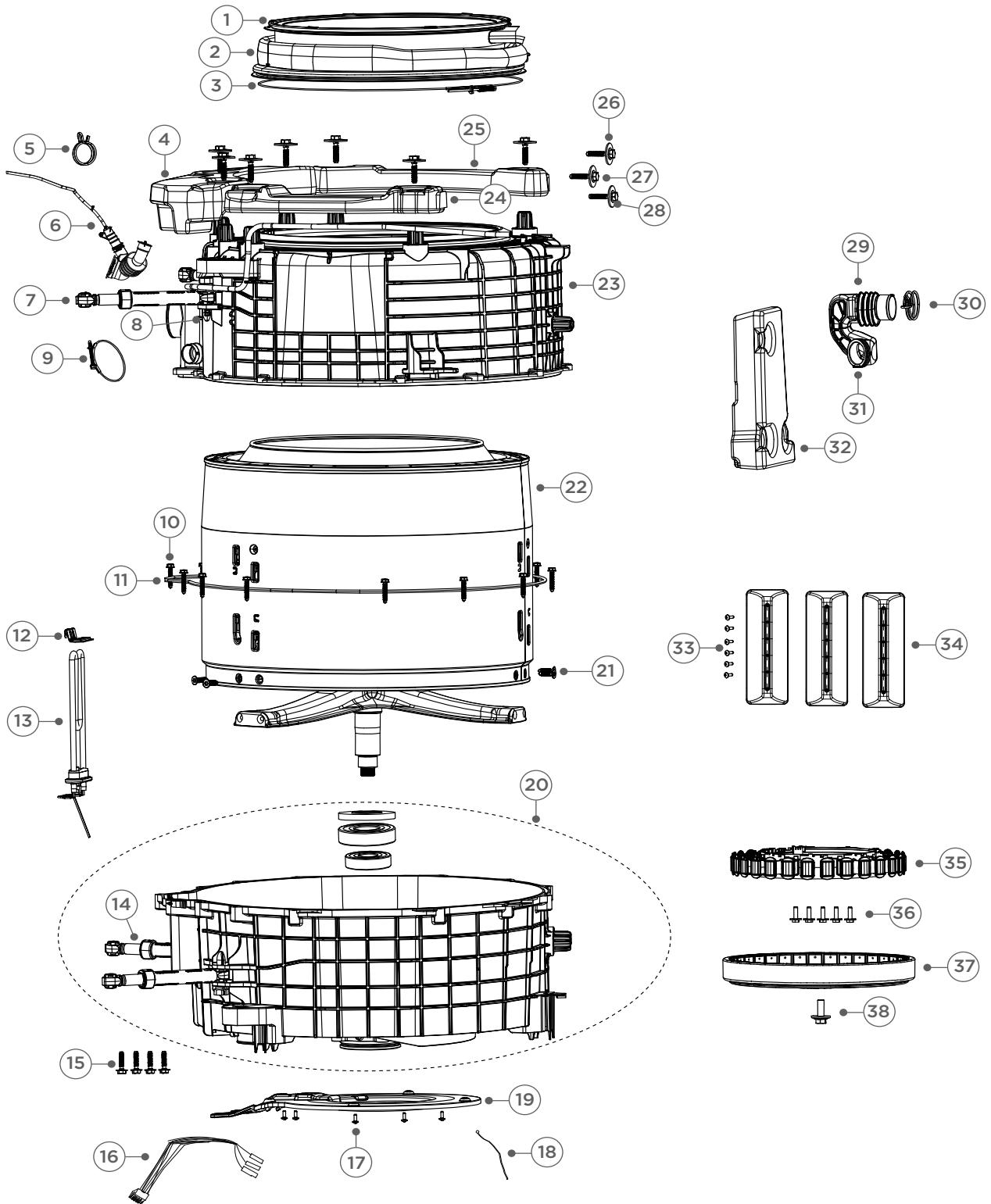
TUB & MOTOR COMPONENTS



TUB & MOTOR COMPONENTS

REFERENCE	PART NUMBER	PART DESCRIPTION
1	H0020600438	CLAMP DOOR
2	H0020300940C	DOOR BELLOWS
NI	H00214800021100	DOOR CLAMP NUT NYLON
3	H0020600439	BELLOWS RETAINER
4	H0020301008	FRONT LH COUNTERWEIGHT
5	H00215200294400A	CLAMP PUMP INNER HOSE
6	H0020810217A	PRESSURE TUBE ASSY
7	H0020809886	SHOCK ABSORBER
8	H0020205577	PIN SHOCK ABSORBER
9	H00297023000100A	CLAMP TUB DRAIN HOSE
10	H00215100001000	SCREW
11	H0020301007	SEAL
12	H0020100432	BRACKET HEATER
13	H0024000387B	ELEMENT
14	H0020809886A	SHOCK ABSORBER ASSEMBLY
15	H0020600444	BOLT SHOCK ABSORBER
16	H0020400087K	HARNESS MOTOR
17	H00330802500A	SCREW TAPPING
18	H0020400560F	EARTH WIRE
19	H0020204835	SHEILD FLAME
20	H0020810388Q	REAR TUB
21	H00215000036000	SCREW
22	H0020810372D	INNER CYLINDER ASSY
23	H0020204824ZA	FRONT TUB
24	H0020301008A	COUNTERWEIGHT BLOCK
25	H0020301009	COUNTERWEIGHT BLOCK UNDER
26	H0020600147A	WASHER COUNTER WEIGHT
27	H0020600285	BOLT COUNTERWEIGHT
28	H00217440540612	WASHER RFI FILTER
29	H0020300999	OUTER HOSE
30	H00218230550611	CLIP DISPENSOR HOSE

TUB & MOTOR COMPONENTS



TUB & MOTOR COMPONENTS

REFERENCE	PART NUMBER	PART DESCRIPTION
31	H00211320018800A	CLAMP 43 TUB DISPENSER
32	H0020300958	BALANCE COUNTERWEIGHT
33	H0020600029	SCREW
34	H0020205556	DRUM VANE
35	H0024000410A	MOTOR STATOR
36	H0020600405	SCREW STATOR
37	H0024000410	MOTOR ROTOR
38	H0020600404	BOLT ROTOR

www.fisherpaykel.com

© Fisher & Paykel Appliances 2019. All rights reserved.
The product specifications in this document apply to the specific products and models described at the date of issue. Under our policy of continuous product improvement, these specifications may change at any time. You should therefore check with your Dealer to ensure this document correctly describes the product currently available.

AU NZ

PRODUCT CODE: 61391-A 06.19