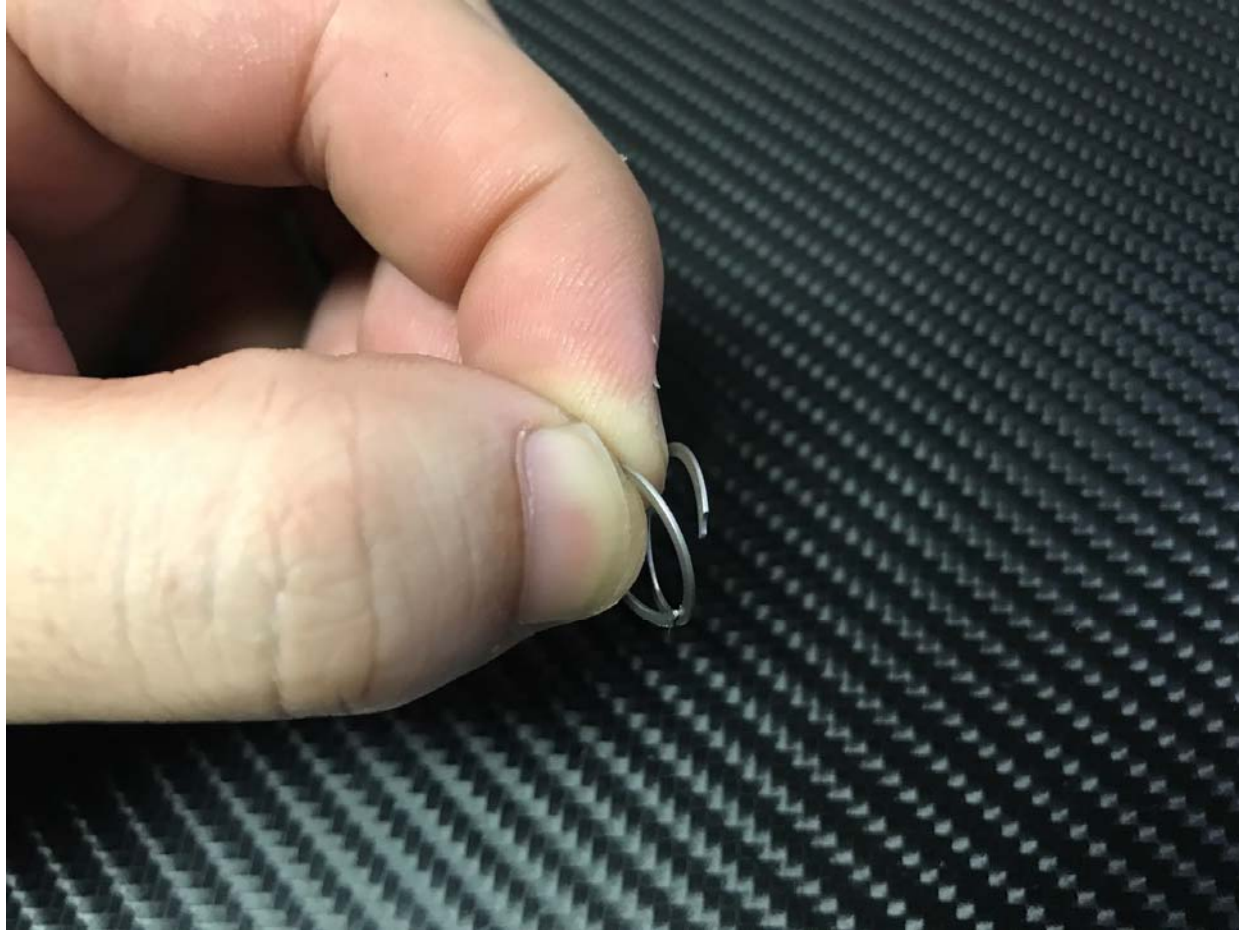




1. Drop the bearing inside of the bearing hole.



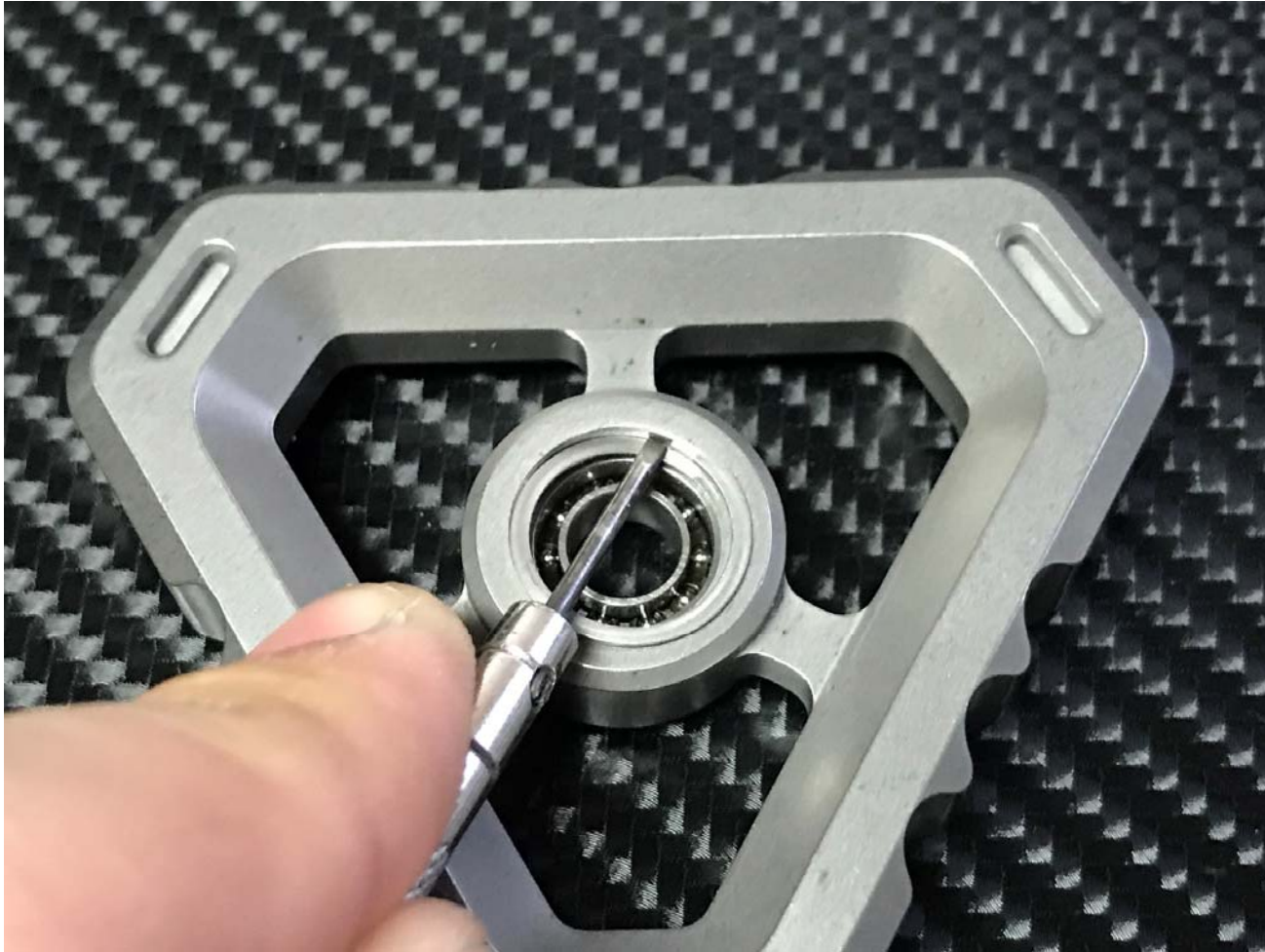
2. Split the retaining clip wide open with your fingers.



3. Insert the tip of the retaining clip to the retainer groove on the spinner body. Keep pushing it to the groove to prevent it from spring out.



4. Use a small flat head screw driver to press the lower layer of the retaining clip downward to make it seat into the retaining groove. Keep pushing the retaining clip with the other hand to prevent it from spring out.



5. Keep pressing the retaining clip down into the groove with the flat head screw driver.



6. Keep pressing the clip around until the whole clip seats inside of the groove. Use the other hand to prevent the clip from springing out.



7. Picture above shows the whole retaining clip is inside of the groove. Make sure yours matches with the image. The installation has been completed. Happy spinning.