



## INSTALLATION INSTRUCTION

FOR MECHFORCE KEYMOD GRIPS



Before performing any steps, all ammunition must be removed from the firearms. Remove the magazine from the firearm. Fully pull the slide or bolt group to eject the round from the chamber. Visually inspect through the ejection port to verify that no ammunition is in the chamber. Always keep the muzzle pointed in a safe direction. Without performing this safety precaution may cause serious injury or death to persons. MECHFORCE is not liable for any damage or injury sustained through improper installation.

- 1 Carefully review Figure 1 below to understand the product components and its features. The locking nut side points the muzzle.

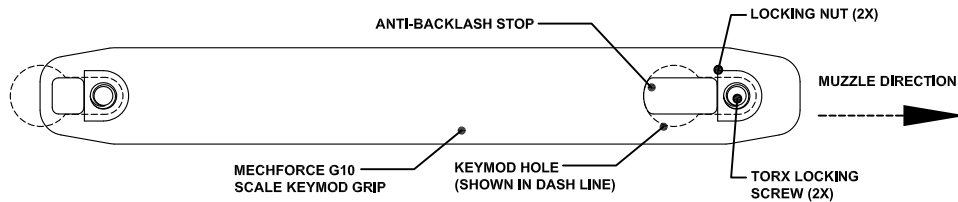


FIGURE - 1: BACK VIEW

- 2 Back out the locking nuts to the end of the screws as shown in Figure 2 below.



FIGURE - 2: SIDE VIEW

- 3 Drop the two locking nuts through the bigger side of the KeyMod holes and then slide the whole grip assembly forward until the Anti-Backlash Stop fully seats into the KeyMod hole. See Figure 3.

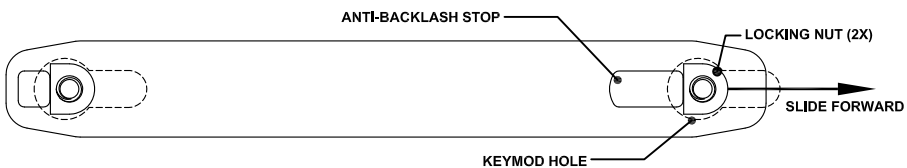


FIGURE - 3: BACK VIEW

VISIT US AT [WWW.MECHFORCE-USA.COM](http://WWW.MECHFORCE-USA.COM)  
FOR OTHER EXCITING PRODUCTS



- 4 Once the grip assembly seats in place, pull the screws outward to make the locking nuts seat into the KeyMod chamfered slots. See Figure 4 and Figure 5.

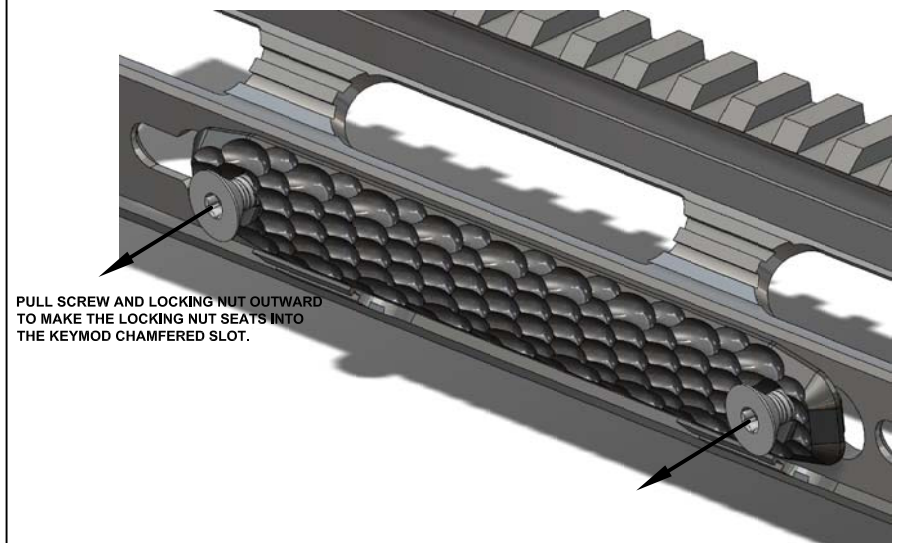
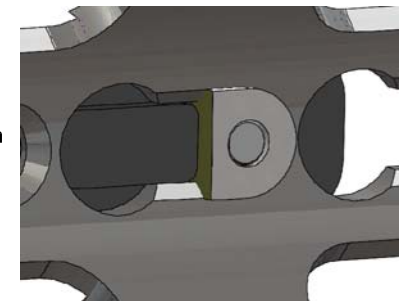


FIGURE - 4: ISO VIEW

- 5 Tighten the screw with hand while keep pulling the screw outward. This will prevent the locking nut from turning together with the screw which will result in seating in the wrong place.

- 6 Once the screws can no longer be turned by hand force. Use the Torx wrench supplied to torque the screws to 17 in/lb.



LOCKING NUT SEATS INSIDE THE KEYMOD CHAMFERED SLOT.

FIGURE - 5: LOCK NUT

VISIT US AT [WWW.MECHFORCE-USA.COM](http://WWW.MECHFORCE-USA.COM)  
FOR OTHER EXCITING PRODUCTS