



## **Polaris RZR Turbo S Air Intake Kit**

*2018-2021 POLARIS RZR TURBO S | 661001*

INSTALLATION GUIDE

**HS-MOTORSPORTS.COM**

Rev: 11.04.20

# RZR Turbo S Air Intake Kit

2018-2021 Polaris RZR Turbo S

## TROUBLESHOOTING

Please read and understand all installation instructions before proceeding with the installation. If you have questions during the installation of this product, please contact H&S Motorsports support at [tech@hs-motorsports.com](mailto:tech@hs-motorsports.com) or (855) 623-4450.

## INCLUDED PARTS

3 - Intake pipe pieces

3 - Silicone boots

1 - Air filter

1 - Air filter outerwear

1 - Hardware pack

## STEP 1

---

Remove factory engine cover. Using compressed air clean all the areas you may be working on to keep any dirt or debris out of the intake or engine. Un-clip the pivot locks on the factory air intake box, remove cover and factory air filter.



2018 - 2021 RZR TURBO S AIR INTAKE KIT

---

## STEP 2

---

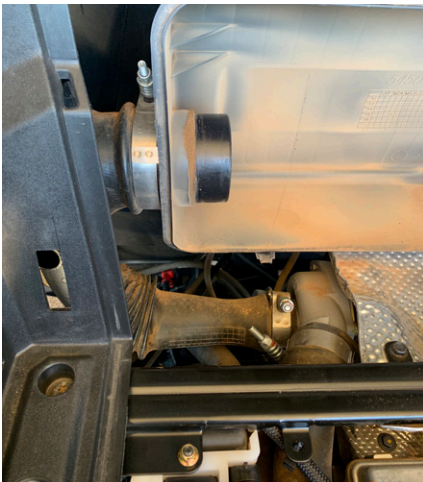
Using pliers twist the pinch clamps until they come apart on the factory blow-off valve hose and breather hose as shown where they connect to the factory plastic intake tube. These clamps will not be re-used, discard them when they break apart. Remove the hoses from the intake tube. Locate factory PMAP sensor in intake pipe and unplug it.



## STEP 3

---

Loosen factory t-bolt clamp on turbo and factory t-bolt clamp at factory air box as shown. Wiggle and rock the factory plastic intake hose and remove it from vehicle. Using a T27 torx bit remove the screw that holds the factory PMAP sensor from factory plastic pipe and set aside.



## STEP 4

---

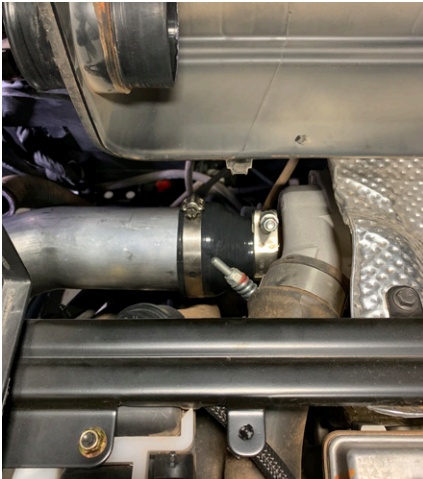
Locate HSM 3" pipe with the hose barbs and PMAP bung welded into it, and the provided 6x1.0x20mm Allen head bolt. Make sure pipe is clean and clear of all debris. Place a little dab of Vaseline or grease on the o-ring of the factory PMAP sensor and gently twist and rock into the welded bung on the 3" pipe. Install mounting bolt and tighten.



## STEP 5

---

Locate the HSM 3"x1.75" reducer boot. Remove the 1.75" t-bolt clamp from the factory plastic intake pipe. Place the clamp onto the HSM boot and push it onto the turbo, make sure it goes on all the way until it stops against the machined edge on the turbo intake. Tighten the 1.75" clamp at this time. Slide one of the provided 3" worm gear clamps onto the 3" portion of the turbo boot leaving clamp loose at the time for final adjustments.



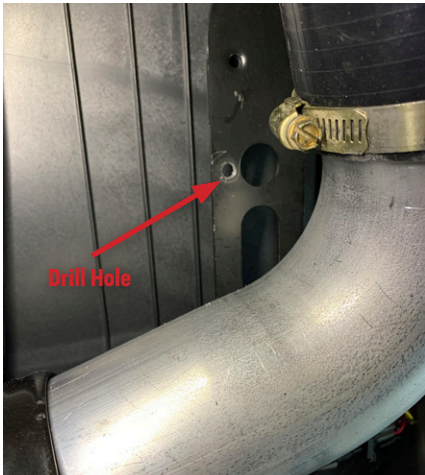
## STEP 6

Install the HSM pipe with the welded bungs on it into the 3" boot on the turbo with the hose barbs facing down and the PMAP sensor on the top. Locate one of the 3" rubber loop clamps, the .350 aluminum spacer and the 6mm self tapping bolt. Slide the loop clamp around the pipe. Now put the spacer on the back side of the loop clamp and using a ratchet or driver start the 6mm bolt into the hole on the bedside frame as shown. It may be left just slightly loose for final adjustments.

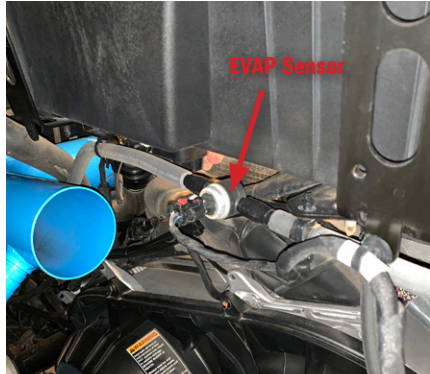


## STEP 7

Using a drill with a 1/4 drill bit, drill a hole in the bed side frame rail in the location shown next to the stamped hole. All the brackets are adjustable, so the location is not super crucial, just center it next to the big stamped hole. Remove wiring harness clip as shown in bedside tab, slightly bend it down a little toward the engine for pipe clearance. Push clip back into hole. Using a torx driver remove the screw and plastic bed cover as shown right by the roll cage. Locate HSM straight support bracket and install it into the hole you just drilled as shown leaving slightly loose so it may be adjusted. Locate the other HSM support bracket (ninety degree bend on the end) and install it as shown using the factory bolt on the roll cage.



## STEP 7 CONTINUED



2020-2021 Models Years- Locate EVAP sensor clipped to bed frame on machine as shown. Remove clip from bed and zip tie sensor and line to wiring harness directly behind it for intake pipe clearance.

## STEP 8

---

Locate the HSM 3" straight hump hose, the other one of the ninety degree 3" pipes (THE ONE WITHOUT THE BEAD ROLL ON THE END) and two more 3" worm gear clamps. Spray glass cleaner into both ends of the boot (this will make the piping easier to adjust) install the hump hose and clamps as shown onto the first pipe you installed. Install the next ninety degree pipe into the hump boot facing up toward the hole in the bed. Locate another one of the 3" rubber loop clamps and install around the second pipe and support bracket as shown leaving slightly loose so it all may be final adjusted.



## STEP 9

---

Locate the HSM 3"x3" straight boot and slide it down onto the pipe facing up toward the bed with two more 3" worm gear clamps. Locate the last 3" ninety degree pipe (THE ONE WITH THE BEAD ROLL ON TH END FOR THE AIR FILTER) and install it into the 3" boot with bead roll protruding up through the bed. Locate the last 3" rubber loop clamp and hardware. Install it loosely with hardware around pipe and cage support bracket as shown.



## STEP 10

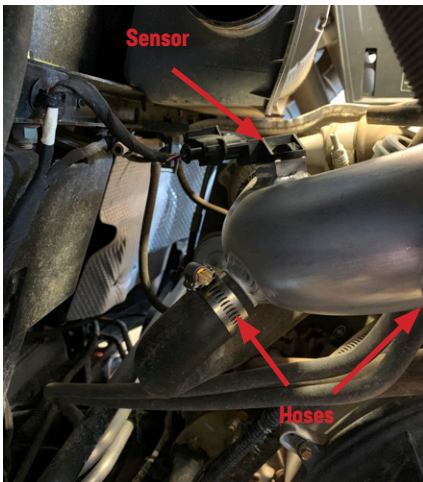
---

Test fit your air filter onto pipe and make sure the piping is adjusted to desire. Tighten rubber loop by air filter first once desired adjustment is achieved. Working your way toward turbo start tightening all clamps and hardware making sure nothing is hitting or rubbing. Tighten all support brackets to desired adjustments. Double check and make sure all hardware and clamps are tight after all adjustments have been made!

## STEP 11

---

Locate the two 1" worm gear clamps. Install the clamps onto factory blow off valve and breather hoses. Install hoses onto hose barbs on 3" pipe as shown . Tighten clamps. Plug factory TMAP sensor connector back onto sensor ensuring it clips on all the way. Install the HSM Outerwear gently onto you air filter and install air filter. Adjust to desire and tighten clamp. The factory air box and factory rubber intake pipe may be left in or removed, up to you! Install factory rear engine cover once all done.





## STEP 12

ENJOY YOUR HSM RZR INTAKE SYSTEM!





**1222 S. HILLCREST DR.  
WASHINGTON, UT 84780**

---

**HS-MOTORSPORTS.COM**