



INTERCOOLER PIPE UPGRADE KIT

(OEM REPLACEMENT)

2017-2022 6.7L FORD | 122008

INSTALLATION GUIDE

[HS-MOTORSPORTS.COM](https://www.hs-motorsports.com)

Rev: 09.26.23

INTERCOOLER PIPE UPGRADE KIT

2017-2022 6.7L FORD



TROUBLESHOOTING

Please read and understand all installation instructions before proceeding with the installation. If you have questions during the installation of this product, please contact H&S Motorsports support at tech@hs-motorsports.com or **(855) 623-4450**.

INCLUDED PARTS

- 1 - HSM Billet Aluminum Throttle Coupler
- 1 - 5-Ply Stainless-Reinforced Hose Replacement
- 2 - Stainless T-bolt Clamps

STEP 1

Disconnect vehicle batteries.

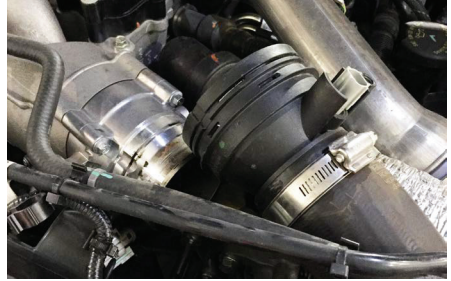
STEP 2

Locate the factory intake air temperature sensor on top of the factory plastic throttle body coupler. Unplug this sensor and un-clip the harness from the coupler.



STEP 3

With a pick tool or something similar, carefully remove the metal locking clip from the factory plastic throttle body coupler as shown. Pull the coupler off of the factory throttle valve assembly as shown.



STEP 4

Locate the lower clamp located on the other end of the factory intercooler hose assembly (at the intercooler). Loosen the factory clamp and remove the entire factory intercooler pipe assembly from the vehicle.



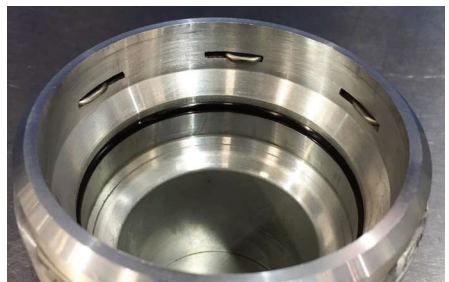
STEP 5

Twist carefully (**1/4 turn counter-clockwise**) to unlock and remove the intake air temperature sensor from the factory plastic throttle body coupler. Apply some vaseline or grease to the o-ring of the factory intake air temperature sensor and install it into the machined port on the supplied HSM billet aluminum throttle coupler. Be sure to carefully twist the sensor to properly lock it into place (**1/4 turn clockwise**).



STEP 6

Install the factory locking clip in the groove on the outside of the HSM billet throttle coupler as shown. Install the supplied throttle coupler o-ring in the groove on the inside of the HSM billet throttle coupler as shown. Apply some vaseline or grease to the throttle couple o-ring and install the HSM billet throttle coupler to the factory throttle valve (on vehicle). Carefully wiggle and push until the outer locking clip locks into place.



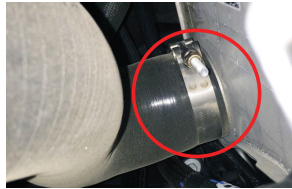
STEP 7

Remove the bolt holding the power steering reservoir to the fan shroud. Pull the power steering reservoir up to disconnect it from the fan shroud and just let the reservoir swing free to temporarily provide easier access to the lower intercooler hose mounting point (on intercooler).



STEP 8

Locate the supplied HSM heavy-duty silicone intercooler hose and (2) T-bolt clamps. Loosely install the clamps onto the silicone hose and orient the clamps so that the clamp nuts are facing upwards in the vehicle and can be easily accessed when the hose is installed. Install the lower part of the supplied intercooler hose (**the end WITHOUT the HSM logo**) to the factory intercooler first, then install the upper part (**the end WITH the HSM logo**) to the previously installed HSM throttle coupler as shown. It may help to use glass cleaner to lube up the hose for easier installation. Adjust the hose and clamps to ensure proper clearance/orientation and tighten both clamps to **90 inch lbs.**



Note: Make sure when installing the clamp on the intercooler end of all boots to be sure the clamp is pushed up close against the intercooler outlet as shown, so the intercooler outlet does not cut the boot if the clamp is tightened too far out.

STEP 9

Re-install the power steering reservoir using the factory hardware. On some applications, the hose clamp on the power steering reservoir hose can be clocked/oriented in such a way that it may rub or get close to the new silicone hose (SEE PICTURE). If the clamp is clocked/oriented in that position, use a pair of needle-nose pliers to rotate the hose clamp ends away from the silicone hose.

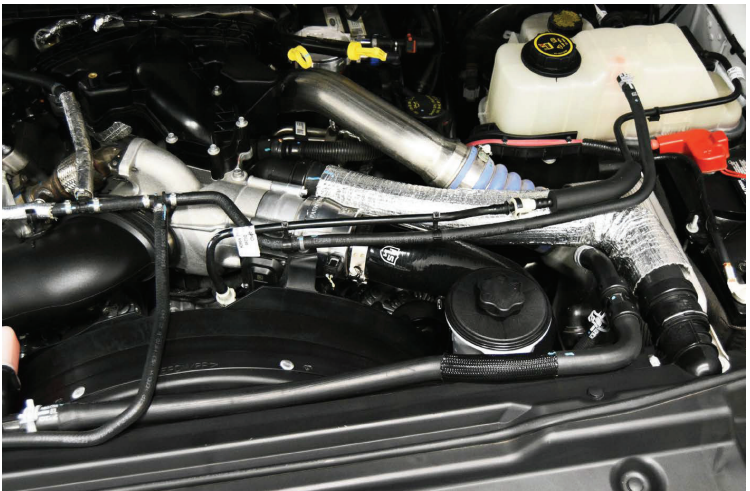


STEP 10

Reconnect the factory intake air temperature sensor connector and clip/zip-tie the wiring harness away from any hot/moving engine components. Reconnect vehicle batteries and double-check all work.

STEP 11

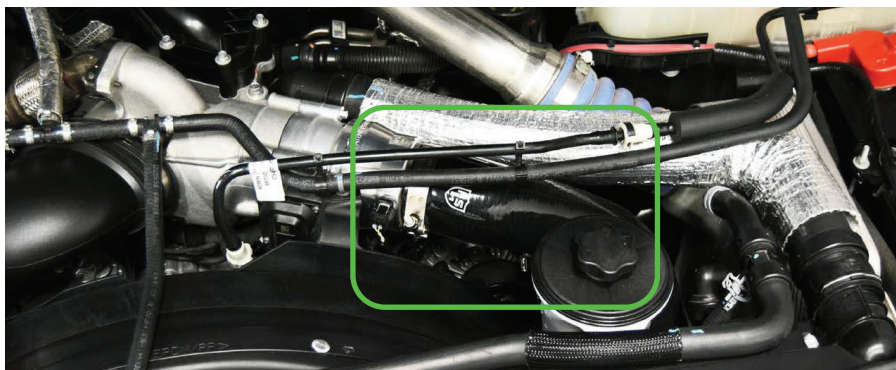
Kit installed.



C.A.R.B. E.O. NOTICE

E.O. identification label is required in passing the Smog Check inspection.

The E.O. identification label must be placed on or near the device in the engine compartment so that smog check technicians can verify the E.O. number.





**1222 S. HILLCREST DR.
WASHINGTON, UT 84780**

HS-MOTORSPORTS.COM