



## Billet Fuel Filter Housing

2011-2016 FORD 6.7L POWER STROKE | 121008

INSTALLATION GUIDE

[HS-MOTORSPORTS.COM](http://HS-MOTORSPORTS.COM)

Rev: 01.17.24

# Billet Fuel Filter Housing

2011 - 2016 Ford 6.7L Power Stroke

## IMPORTANT!

Please inspect and thoroughly clean all parts prior to installation. Any small particle of dust or contamination can cause catastrophic failure to a fuel system. If you are unsure if you can install this product without contamination, please refer to a professional installation shop.

## TROUBLESHOOTING

Please read and understand all installation instructions before proceeding with the installation. If you have questions during the installation of this product, please contact H&S Motorsports support at [tech@hs-motorsports.com](mailto:tech@hs-motorsports.com) or (855) 623-4450.

**NOTE: Use a drain pan or bucket to catch the majority of the drained fuel. Have some shop towels/rags handy to clean up any fuel spillage that may occur.**

### STEP 1

Locate the factory fuel filter assembly underneath the vehicle near the front of the fuel tank on the driver side frame rail. Make sure it is clean, that you do not get dirt into the fuel system you are working on. Place clean drain pan or bucket below it. Unplug factory water in fuel sensor harness. Using an 1-1/8 socket, remove the factory plastic fuel bowl from the bottom of the factory fuel filter housing and drain fuel from the housing.

*NOTE: Some residual fuel may still be present in the filter and filter housing. Have some shop /rags handy to clean up any fuel spillage that may occur.*

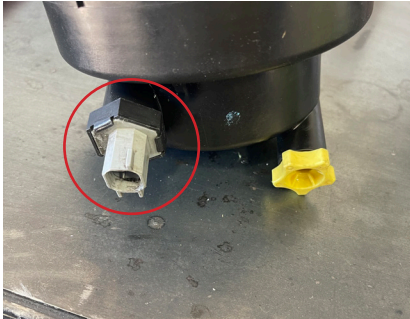


## STEP 2

---

Remove factory filter from plastic housing and discard. Using an adjustable wrench remove the factory water in fuel sensor from the factory plastic housing. Make sure o-ring is still on the sensor and not stuck in the factory housing.

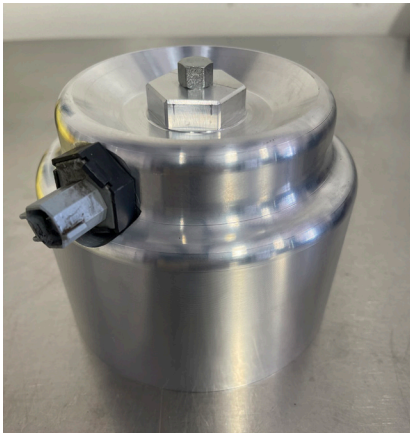
*NOTE: In some 2015-2016 applications the Water In Fuel sensor may need to be installed into HSM billet after it is installed onto factory fuel pump/housing assembly to prevent contact with steel mounting bracket.*



## STEP 3

---

Locate HSM billet fuel bowl. Make sure factory water in fuel sensor o-ring is installed on it and lubed with Vaseline or clean oil. Install factory water in fuel sensor into port on the side of the fuel bowl. Gently tighten until snug (only 44 inch lbs.) Install Vaseline or grease on orb plug O-ring and install supplied 1/8 orb plug into bottom of billet fuel bowl and tighten.



## STEP 4

---

Locate large provided filter housing o-ring and rub clean Vaseline on it. Replace the old o-ring on the side of the fuel pump/bowl housing ensuring it is in the groove as shown. Install new factory filter into the guiding groove in the HSM billet fuel bowl and install assembly onto pump/filter housing. Make sure housing threads on all the way to the flat stop and tighten bowl to 20-25 ft lbs. (do not over tighten) Plug factory water in fuel sensor wiring back in.

*NOTE: Some trucks may require you to extend the wiring harness/and or unclip and extend the harness for the water-in-fuel sensor due to Ford's wiring harness being different lengths in different trucks.*



## STEP 5

---

Turn key on, do not start engine. Cycle the key on and off waiting 30 seconds each time for pump to prime. Do this until the pump primes the fuel system( 5-10 times) Start engine and check for leaks.

Enjoy your HSM Billet fuel bowl !!!



**1222 S. HILLCREST DR.  
WASHINGTON, UT 84780**

---

**HS-MOTORSPORTS.COM**