

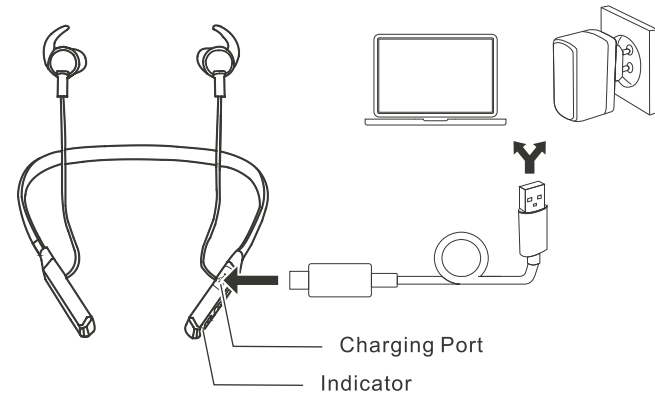
# User Guide

HAP-2110



## CHARGING

1



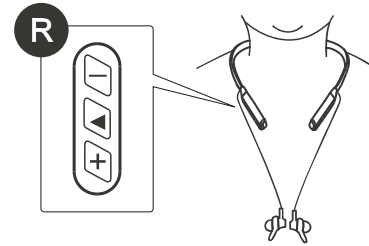
- Make sure the hearing aids are turned OFF.
- Gently open the charging port cover.
- Charge the hearing aids using the USB cable connected to a computer or wall charger.

- Charging : Indicator turns orange.
- Fully charged : Indicator turns green.

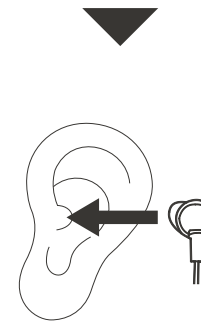
**⚠ Fully charge the hearing aids for the 1st time.**

## WEAR HEARING AIDS

2



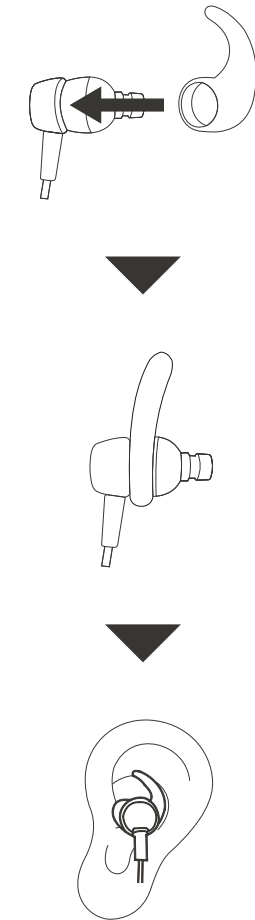
Place the neckband around your neck.  
Buttons should be on the right.



**⚠ Choose a correct ear tip size. A whistling sound may occur if the tip is not firmly inserted into your ear.**

## INSTALL EAR WING ( OPTIONAL )

3

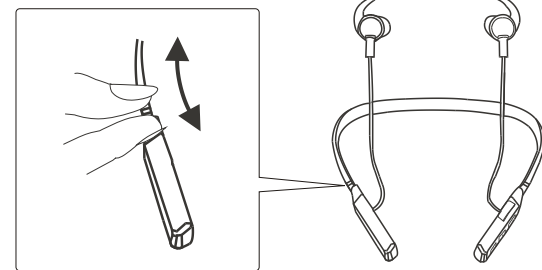


4



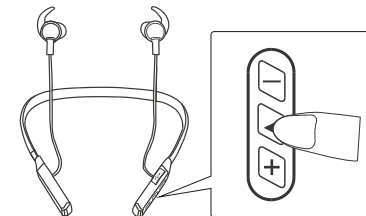
## ADJUST CABLE LENGTH

5



## TURN HEARING AID ON/OFF

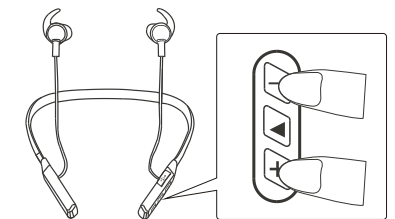
6



- Turn ON : Press and hold the [ ON/OFF / Mode Button ] for 3 seconds until the green indicator flashes.
- Turn OFF : Press and hold the [ ON/OFF / Mode Button ] for 3 seconds until the orange indicator flashes.

## ADJUST VOLUME

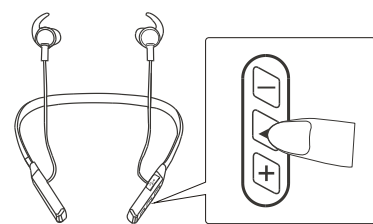
7



- Increase : Press the [ + Button ] repeatedly to increase volume. Volume is at max. when 3 beep sound is heard.
- Decrease : Press the [ - Button ] repeatedly to decrease volume. Volume is at min. when 3 beep sound is heard.

## SELECT LISTENING MODE

8



Press the [ ON/OFF / Mode Button ] repeatedly to switch between NOISE CANCELLING and NORMAL mode.

- NOISE CANCELLING MODE : 2 beep sound is heard.
- NORMAL MODE : 1 beep sound is heard.

## WHILE NOT USING THE HEARING AIDS

9



While not using the hearing aids, you can pull the earbuds off, snap them together, and they will be magnetically attached.

## SAFETY INSTRUCTIONS

1. This product is suitable for mild to moderately severe hearing loss only, and not suitable for patients with tympanitis or ear pyogenesis.
2. Avoid listening at high volume for a long period of time to avoid possible hearing damage.
3. Stop using immediately if you feel any discomfort.
4. Please maintain your hearing aid all the time. Avoid the ear tip and microphone being blocked by foreign objects, as it will affect the result of sound amplification.
5. Avoid shaking or dropping your hearing aid.
6. Do not keep your hearing aid in an environment of high humidity or high temperature.
7. Keep out of reach of children.

## SPECIFICATIONS

Charging Time	Approx. 2 hours
Usage Time	Approx. 80 hours

