

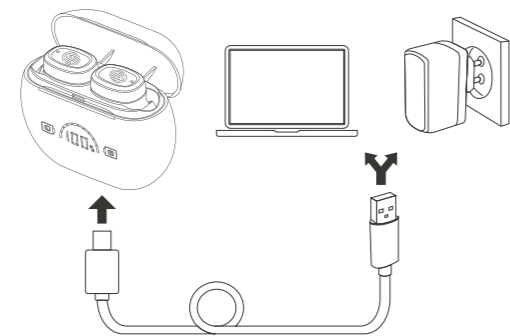
# User Guide

HAP-121



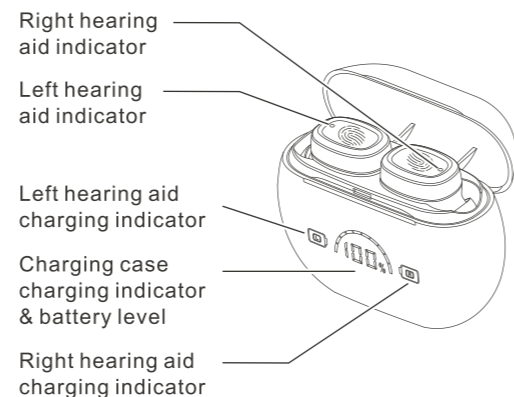
## CHARGING

1



Charge the charging case and hearing aids using the USB cable connected to a computer or wall charger.

2



## Charging Case

- Charging : Blue charging case charging indicator flashes.
- Fully charged : Indicator stops flashing, 100% is shown.

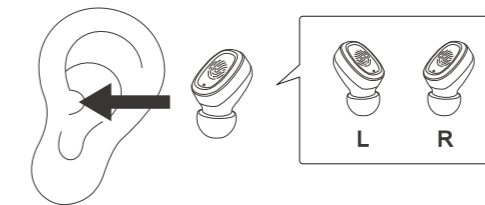
## Hearing Aids

- Charging : White indicator on hearing aids turns ON. Green indicator on charging case flashes.
- Fully charged : Indicator on hearing aids turns OFF. Green indicator on charging case turns OFF.

**⚠ Fully charge the case and hearing aids for the 1st time.**

## INSERT HEARING AIDS

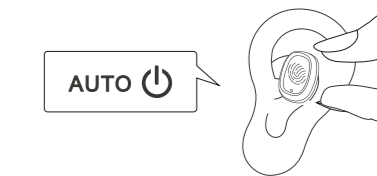
3



**⚠ Choose a correct ear tip size. A whistling sound may occur if the tip is not firmly inserted into your ear.**

## TURN HEARING AID ON/OFF - AUTOMATICALLY

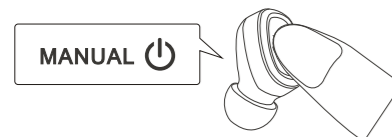
4



- Turn ON : Hearing aid will automatically turn ON in 5 seconds after being removed from the charging case. Green indicator will flash thrice, then turns OFF.
- Turn OFF : Hearing aid will automatically turn OFF when it is placed in the charging box. White indicator will turn ON then:
  1. stay ON if charging is required; or
  2. turn OFF if hearing aid is fully charged.

## TURN HEARING AID ON/OFF - MANUALLY

5

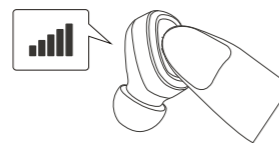


Apart from auto ON/OFF, the hearing aids can also be turned ON/OFF manually.

- Turn ON : Touch and hold the hearing aid for 10 seconds, until the green indicator flashes thrice.
- Turn OFF : Touch and hold the hearing aid for 6 seconds, until the green indicator flashes thrice.

## ADJUST VOLUME

6

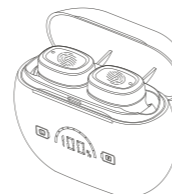


- Tap the hearing aid repeatedly to increase volume.
- 2 low-pitched beep sound is heard while increasing from level 1 - 4.
- 3 beep sound is heard when it reaches the highest volume level ( level 5 ).
- Tap once more and it will return to level 1.

## CHARGING ON-THE-GO

8

- To charge your hearing aids, place them in the charging case and close the lid.
- A fully charged case provides 5 extra hearing aids charges when on-the-go.



- Charging : White indicator on hearing aid turns ON. Green indicator on charging case flashes.
- Fully charged : White indicator on hearing aid turns OFF. Green indicator on charging case turns OFF.

## SAFETY INSTRUCTIONS

1. This device is suitable for mild to moderately severe hearing loss only, and not suitable for patients with tympanitis or ear pyogenesis.
2. Avoid listening at high volume for a long period of time to avoid possible hearing damage.
3. Stop using immediately if you feel any discomfort.
4. Maintain your device all the time. Avoid the ear tip and microphone being blocked by foreign objects, as it will affect the result of sound amplification.
5. Avoid shaking or dropping your device.
6. Do not keep your device in an environment of high humidity or high temperature.
7. Charge your device regularly to avoid battery overdischarge.
8. Keep out of reach of children.

## SPECIFICATIONS

Charging Time	Approx. 2 - 4 hours
Usage Time	Approx. 20 hours
Extra Charges by Charging Case	Approx. 4 - 5 times



**hopewell** / since 1985

© hopewell. All right reserved. The hopewell logo is a registered trademark of Norm Design Ltd. Information in this document is subject to change without notice.

hopewell-living.uk

