

# MIDNIGHT FLORA

by Melissa Lowry





Y3386-57 Digital



Y3386-51 Digital

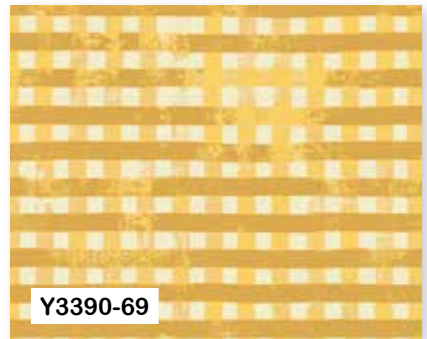
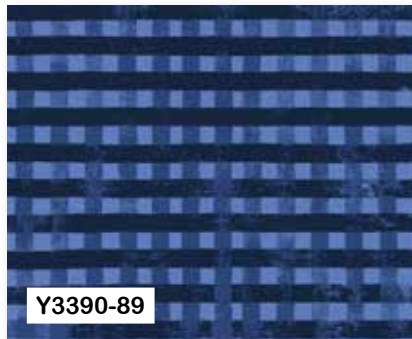
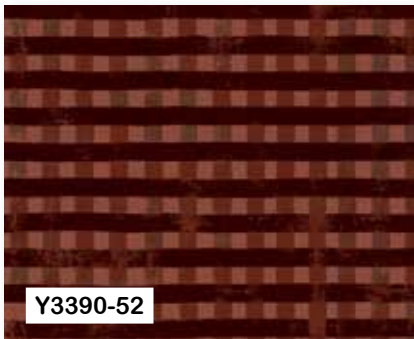
100% Cotton Shirting

30x30/75x75

43 - 44" wide - 15 Yds D/R

# MIDNIGHT FLORA

by Melissa Lowry





Y3386-3 Digital

# MIDNIGHT FLORA

by Melissa Lowry



100% Cotton Shirting

30x30/75x75

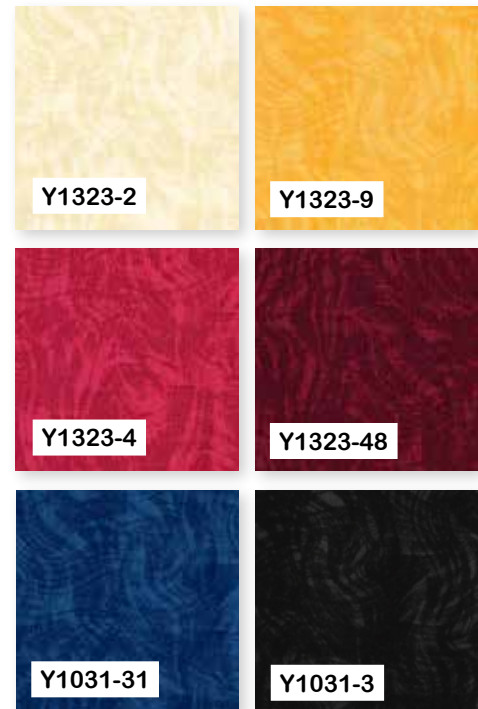
43 - 44" wide - 15 Yds D/R

## CUT GOODS

	Y3386-3	<p><b>Fat Quarters</b> <b>FQ0348</b> 15 pieces</p>
	Y3386-51	
	Y3386-57	<p><b>Fat Eighths</b> <b>FE0348</b> 15 pieces</p>
	Y3386-87	
	Y3387-51	<p><b>2.5" Strips</b> <b>ST0348</b> 40 total pieces</p> <p>3 each of Y3386-3, Y3386-51, Y3386-57, Y3386-87, Y3387-51, Y3387-89, Y3387-115, Y3388-57, Y3388-115, Y3389-4</p> <p>and 2 each of Y3389-89, Y3389-115, Y3390-69, Y3390-52, Y3390-89</p>
	Y3387-89	
	Y3387-115	
	Y3388-57	
	Y3388-115	
	Y3389-4	<p><b>5" Squares</b> <b>SQ0348</b> 42 total pieces</p> <p>3 each of Y3386-3, Y3386-51, Y3386-57, Y3386-87, Y3387-51, Y3387-89, Y3387-115, Y3388-57, Y3388-115, Y3389-4, Y3389-89, Y3389-115</p> <p>and 2 each of Y3390-69, Y3390-52, Y3390-89</p>
	Y3389-89	
	Y3389-115	<p><b>10" Squares</b> <b>TSQ0348</b> 42 total pieces</p> <p>3 each of Y3386-3, Y3386-51, Y3386-57, Y3386-87, Y3387-51, Y3387-89, Y3387-115, Y3388-57, Y3388-115, Y3389-4, Y3389-89, Y3389-115</p> <p>and 2 each of Y3390-69, Y3390-52, Y3390-89</p>
	Y3390-69	
	Y3390-52	
	Y3390-89	



## Impressions Moiré



# MIDNIGHT FLORA

by Melissa Lowry

## INDIGO BAY

By Villa Rosa Designs • Designed by Pat Fryer • villarosadesigns.com • 54" x 69"

NEW!



Fabrics:	1 Kit	10 Kits	20 Kits
6 Darker FQs:			
Black Meadow Y3386-3	1 FQ	1 bolt	1 bolt
Brick Mushrooms Y3387-51	1 FQ	1 bolt	1 bolt
Dk Denim Mushrooms Y3387-89	1 FQ	1 bolt	1 bolt
Dk Black Small Floral Y3388-115	1 FQ	1 bolt	1 bolt
Dk Denim Outlined Flowers Y3389-89	1 FQ	1 bolt	1 bolt
Dk Black Outlined Flowers Y3389-115	1 FQ	1 bolt	1 bolt
6 Lighter FQs:			
Cream Meadow Y3386-57	1 FQ	1 bolt	1 bolt
Lt Denim Meadow Y3386-87	1 FQ	1 bolt	1 bolt
Cream Small Floral Y3388-57	1 FQ	1 bolt	1 bolt
Dk Gold Plaid Y3390-69	1 FQ	1 bolt	1 bolt
Khaki Dappled Basic Y2949-12	1 FQ	1 bolt	1 bolt
Lt Yellow Kinkame Shades K2666-8	1 FQ	1 bolt	1 bolt
Border: Brick Meadow Y3386-51	1 yd	1 bolt	2 bolts
Binding: Dk Denim Plaid Y3390-89	5/8 yd	1 bolt	1 bolt
Backing: Dk Black Mushrooms Y3387-115	4 1/2 yds	3 bolts	6 bolts

# MIDNIGHT FLORA

by Melissa Lowry

## TUFFET FOR A SEASON SLIPCOVER

By Tuffet Source • Designed by Sharyn Cole  
 tuffetsource.com • Order No. R-Slipcover Tuf • 18" Slipcover

*Tuffet Slipcover will fit a pre-constructed 18" Tuffet Source tuffet*



### Fabrics, 16 Strips Slipcover:

#### 12 Strips cut WOF:

	1 Kit	10 Kits	20 Kits
Black Meadow Y3386-3	1 FQ	1 bolt	1 bolt
Dk Black Small Floral Y3388-115	1 FQ	1 bolt	1 bolt
Dk Black Outlined Flowers Y3389-115	1 FQ	1 bolt	1 bolt
Dk Brick Plaid Y3390-52	1 FQ	1 bolt	1 bolt

#### 4 Strips cut LOF & 6" sq for button slipcover:

Dk Black Mushrooms Y3387-115	½ yd	1 bolt	1 bolt
------------------------------	------	--------	--------

\*Add'l requirements: 2 yds ¼" elastic, 14" coordinating zipper, Sewing machine with zig-zag option, Open-toe presser foot, Zipper presser foot



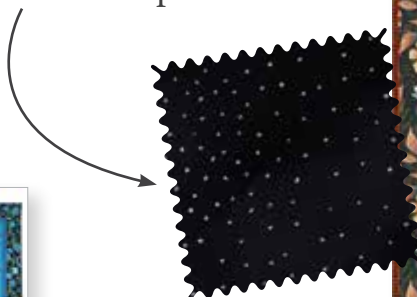
# MIDNIGHT FLORA

by Melissa Lowry

## AMONG THE STARS

By Quilt Moments  
 Designed by Marilyn Foreman  
 quiltmoments.com  
 Order No. QM106  
 Twin Size Shown, 70" x 85"

Easy 4-Patch Kaleidoscope  
 Pieced Blocks and  
 Black with Silver Metallic Dot  
 Setting Border add sparkle!



*Includes 3 Sizes:  
 Throw through Queen/King  
 + Bonus Table Runner!*

Fabrics:	1 Kit	10 Kits	20 Kits
Feature Print: Black Meadow Y3386-3	3 yds	2 bolts	4 bolts
Star Blocks:			
Background: Dk Black Outlined Flowers Y3389-115	1 yd	1 bolt	2 bolts
Star Points: Red Outlined Flowers Y3389-4	¾ yd	1 bolt	1 bolt
Accent Points: Lt Cream Impressions Moiré Y1323-2	½ yd	1 bolt	1 bolt
Snowball Blocks:			
Center Frame: Solid Black AMB-3	½ yd	1 bolt	1 bolt
Outer Frame: Dk Black Small Floral Y3388-115	¾ yd	1 bolt	1 bolt
Setting Star Points & Snowball Block Corners: Cream Small Floral Y3388-57	¾ yd	1 bolt	1 bolt
Setting Border: Black w/ Silver Metallic LB Basic Dot Y2662-3SM	1 ½ yds	1 bolt	2 bolts
Thin Border: Dk Gold Plaid Y3390-69	¾ yd	1 bolt	1 bolt
Binding: Dk Brick Plaid Y3390-52	¾ yd	1 bolt	1 bolt
Backing: Brick Meadow Y3386-51	5 yds	4 bolts	7 bolts

# MIDNIGHT FLORA

by Melissa Lowry

## IF FRANK WERE A QUILTER

By Tamarinis • Designed by Tammy Silvers • tamarinis.com

Order No. TIFW-170 • 55" x 72"



### Fabrics, Brick Version:

Fabric A: Lt Cream Impressions Moiré Y1323-2  
 Fabric B: Dk Denim Plaid Y3390-89 (incl. binding)  
 Fabric C: Brick Meadow Y3386-51  
 Fabric D: Dk Denim Mushrooms Y3387-89  
 Fabric E: Black Meadow Y3386-3  
 Fabric F: Dk Black Mushrooms Y3387-115  
 Backing: Dk Black Outlined Flowers Y3389-115

### Fabrics, Lt Denim Version:

Fabric A: Lt Cream Solid AMB-2  
 Fabric B: Dk Gold Plaid Y3390-69 (incl. binding)  
 Fabric C: Lt Denim Meadow Y3386-87  
 Fabric D: Lt Red Outlined Flowers Y3389-4  
 Fabric E: Brick Mushrooms Y3387-51  
 Fabric F: Dk Denim Outlined Flowers Y3389-89  
 Backing: Cream Small Floral Y3388-57

1 Kit	10 Kits	20 Kits
1 ½ yds	1 bolt	2 bolts
1 yd	1 bolt	2 bolts
2 yds	2 bolts	3 bolts
¼ yd	1 bolt	1 bolt
¾ yd	1 bolt	1 bolt
½ yd	1 bolt	1 bolt
3 ½ yds	3 bolts	5 bolts

# MIDNIGHT FLORA

by Melissa Lowry

## FLORAL FIELDS

By Gabrielle Neil for Sue Daley & Co.  
 millhousecollections.com  
 Order No. SDCO-FFQ • 64" x 73"

10"  
SQUARES



Fabrics:	1 Kit	10 Kits	20 Kits
Midnight Floral 10" Square Pack TSQ0348	1 pack	10 packs	20 packs
Appliqué & Border: Lt Cream Impressions Moiré Y1323-2	2 yds	2 bolts	3 bolts
Binding: Cream Meadow Y3386-57	½ yd	1 bolt	1 bolt
Backing: Brick Meadow Y3386-51	4 ½ yds	3 bolts	6 bolts

\*Add'l Requirements: Appliqué Glue