

PASTEL
SOCIETY
OF
NEW
MEXICO

Enchanted Colors

~The Pastel Exhibition from NM and Beyond!

Juried show of paintings by artists from around the world.

April 22 - June 18, 2023

**Millicent Rogers
Museum** in Taos, NM
has 73 of the exhibition's
paintings on display
daily from 10am - 5pm.
www.millicentrogers.org

See all 124 accepted
paintings in **Interactive
Online Gallery** 24/7
at www.pastelsnm.org



Sunflowers, Daisies, and Red Pears ▶
Sarah Blumenschein

PASTEL
SOCIETY
OF
NEW
MEXICO

Welcome to Enchanted Colors

~The Pastel Exhibition from New Mexico & Beyond!

It truly is hard to believe another year has passed since the PSNM landmark 30th National Pastel Painting Exhibition! So it seemed very fitting to give the show a new “look”. There were several ideas for a new name which would bring a more personal light on the show itself, with its beautiful art and the accompanying gala festivities. We finally decided on a name we think truly expresses the landscape and aura that encompasses our beautiful state of New Mexico, “Enchanted Colors”.

I can’t say enough about our wonderful collaboration with Millicent Rogers Museum in Taos (El Prado), New Mexico! This is the third year MRM has hosted the physical aspect of our hybrid (museum and virtual) exhibitions. As always, Michelle Lanteri, Karen Chertok, Greta Brunschwyler and all the MRM staff are a joy to work with and are very enthusiastic about getting everything done beautifully! In fact, this year they offered a period of time for us to display our Signature Members Show, which will be ending just as the Enchanted Colors exhibition begins.

This year our jurors were Ray Hassard, Ned Mueller and Sally Strand. They rated the 206 paintings which were submitted to the show by artistic merit, which resulted in 124 paintings being accepted...73 paintings on display in the museum show and an additional 51 presented digitally in the Virtual Online Interactive Exhibition.

Our judge, Ann Huston did a wonderful job selecting the award winners from the paintings displayed at the museum — pretty daunting when there were so many beautiful works to judge.

As in years past, I want to once again acknowledge Marilyn Drake, our Graphics Director, for her fine work. In addition to creating this beautiful digital Enchanted Colors catalog, she was responsible for preparing all the wall signs and labels for each of the museum paintings. This is only a fraction of what she did for this exhibition, all while working on PSNM’s monthly newsletter and website.

Many thanks to Tobi Clement who volunteered to receive the Hand-Delivered paintings at the museum and also assist when the shipped paintings were delivered by Taos Crating. I also very much appreciate the thoughtful advice about the opening day festivities for Enchanted Colors offered by Letty Roller, the Signature Members Show co-chair, who was also at the museum for the return of those paintings.

Please enjoy this gorgeous Show Catalog, visit the Millicent Rogers Museum and peruse the show in the Virtual Interactive Online Gallery available on the PSNM website: www.pastelsnm.org



Nicholas Tesluk
National Exhibition Chair



2023 Officers

Sarah Blumenschein
President

Betty Gobielle
Vice-President

Nancy Schrock
Secretary

Gale Kaufman
Treasurer

Linda Boatwright
Past-President

PSNM is a nonprofit arts organization formed in 1989 by a small group of artists seeking to promote the appreciation of the soft pastel medium as well as to contribute to the growing arts community in New Mexico. Although PSNM is based in New Mexico, our membership now includes artists from other states and countries.

Membership is open to anyone interested in pastels. An application form and payment options for annual dues are located on our website.

This entire exhibition catalog is posted on the Pastel Society of New Mexico website, where more information about PSNM, links to other arts organizations, and listings of future PSNM exhibitions can be found.

Pastel Society of New Mexico

PO Box 3571 • Albuquerque NM 87190-3571 • www.pastelsnm.org

Sincere Thanks to our Sponsors and Supporters

BENEFACTOR

Contribution valued at \$500 or more

American Art Collector

Margi Lucena Memorial Award

Terry Ludwig Pastels

Jack Richeson & Co., Inc.

PATRON

Contribution valued at \$250 or more

Blick Art Materials

FrameTek

Jeffrey Potter Memorial Award

ASSOCIATE

Contribution valued at \$100 or more

Airfloat Systems, Inc.

Ampersand Art Supply

Armadillo Art & Craft

Bardean, Inc.

Cheap Joe's Art Stuff

Dakota Art Pastels

H. K. Holbein, Inc.

Pastel Society of America

UArt Paper

FRIEND

Contribution valued at less than \$100

Diane Townsend Artists' Pastels

International Artist Magazine

Catalog Design: Marilyn Drake

Award-winning

Artists continue to win awards with Terry Ludwig Pastels.

terry
ludwig
PASTELS™

Platte Snow by Norbert Nagel
First Place PSC 2016
Mile High International Show



You can visit us at:

TerryLudwig.com

customerservice@terryludwigpastels.com

[f terryludwigpastelsLLC](https://www.facebook.com/terryludwigpastelsLLC)

8113 W. Brandon Drive
Littleton, CO 80125
303.795.1232

and Safe

Terry Ludwig Pastels do not contain Cadmium
(a known carcinogen) keeping artists safe.

Soft Pastels Created by Artists for Artists



 **Jack Richeson**
www.richesonart.com & Co., Inc.

Call to find the dealer nearest you.
800.233.2404

RICHESON HANDMADE PASTEL BLOCKS

Richeson Handmade Pastel Blocks offer luxurious texture and incredibly rich colors in a large square block, ideal for underpainting. This is a great enhancement to the 500+ color line! A carefully selected 40 color range includes beautiful, rich darks and one white for laying in large swaths of background colors. Don't use up all of your pastels sticks laying in your background; use blocks!



RICHESON HANDROLLED PASTELS

Richeson Handrolled Soft Pastels offer luxurious texture and incredibly rich colors in an size suitable for studio and plein air work. Professional quality, pigment-rich pastels available in over 500 colors. Innovative stick size 1-3/8" is long enough to easily hold and short enough to not require breaking

airfloat
Systems

BLICK
art materials

 **ampersand**TM

HOLBEIN

CHEAP JOE'S
ART STUFF

 EST. 1985 • BOONE, NC



**PREMIUM SANDED
PASTEL PAPER**

What makes pastel paintings so special and appealing?

Pastel as a collector's medium has undergone a revival in recent years. With the advent of newly developed, or newly updated materials, pastel is now more archival than ever before. The primary concern for art collectors has been the possibility of image degradation due to the use of non-archival surfaces, as historically it was generally the surfaces that caused problems and not the pastel media itself. Yet even with this concern, many older pastels still show little signs of aging despite being painted on non-archival surfaces. Compare a Degas' pastel to a Degas' oil and you will notice that the pastel emits a vibrancy of color the oil cannot, due to the yellowing of the mediums in the oil. Pastel doesn't yellow or crack, however it must be kept under glass to preserve the surface. If handled correctly a pastel will hold its vibrant color, and its value, for generations to come.

A particle of pastel pigment seen under a microscope resembles a diamond with many facets. This causes pastel paintings to reflect light like a prism. No other medium has the same power of color or stability. Properly framed, pastel is one of the most permanent painting mediums.

Pastels are created from the same pigments as those used in watercolor and oil paints; only the binder is different. Gum tragacanth is used to bind the pigments of pastels instead of gum arabic which binds watercolor pigments and linseed oil which is used in oil paints.

Soft pastels are available in three forms: round or square sticks, created with only enough binder to hold them together; slim square sticks, which are

harder and created with more binder; and pastel pencils, which have the most binder and are the hardest form of soft pastels.

Pastels may be applied to a multitude of surfaces, many of which are available in a wide variety of colors to complement or contrast with the painted image. Popular choices, most of which are archival, are sanded paper, boards coated with marble dust or pumice, and rough finished rag paper. The surface may be underpainted with acrylic, gouache, oil paint, or watercolor. Each artist employs his or her personal technique for the specific requirements of an individual painting.

Generally, finished pastel paintings are not sprayed with fixative and are framed using a spacer or mat between the painting and the glass. All of these properties—the artists, their creativity, and the materials they use come together to make pastel paintings so very special and appealing!

PSNM 30th Anniversary Pastel Set ►

Created especially for PSNM to capture the vivid colors of New Mexico's sky and landscape.



PASTEL
SOCIETY
OF
NEW
MEXICO

JURORS



JUDGE

ANN HUSTON

<http://annhustonstudio.com>

Moonlight Flowers



RAY HASSARD

<https://www.rayhassard.com>

First Brush of Spring, Indiana

12 x 16

NED MUELLER
<https://www.nedmueller.com>

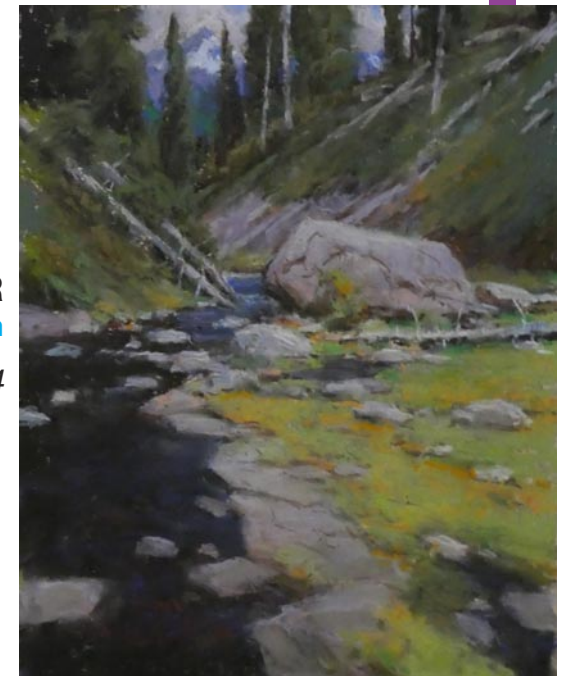
A Bit of Paradise • 11 x 14



SALLY STRAND

<https://www.sallystrand.com>

Journey • 19 x 34



PASTEL
SOCIETY
OF
NEW
MEXICO

Enchanted Colors

73 Artists/124 Paintings

Artists are listed alphabetically by last name. Sizes shown are image size (height x width).

All paintings
in this
exhibition are
for sale.

Prices include frames and applicable NM Gross Receipts Tax. Shipping not included.

Payment may be made by check, debit or credit card.

If you are interested in purchasing a painting, please contact Nicholas Tesluk at
psnm.nschair@gmail.com or 505-908-8603

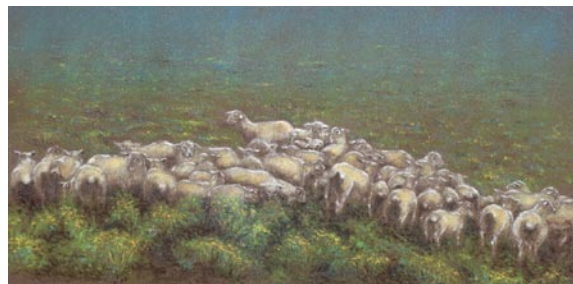
✦ next to a painting's title indicates it will be at the **Millicent Rogers Museum**. All others in online gallery only.

● next to a painting's title indicates it has been sold.



JOANNE AGOSTINELLI

Clarkdale, AZ
Sun-Kissed Cholla
15 x 20 • \$1100



ROGER AMBROSIER

Evergreen, CO
Shepherd ✦
12 x 18 • \$3500



PATTI ARBINO

Northridge, CA
Sailing ✦
9 x 12 • \$600



PATTI ARBINO

Northridge, CA
Sea Slippers ✨
14 x 8 • \$1000



PATTI ARBINO

Northridge, CA
Wood to Rock II ✨
14 x 9 • \$800



MARCIA BALLOWE

Great Falls, MT
Aspen in Spring ✨
8 x 10 • \$550



MARCIA BALLOWE

Great Falls, MT
Dancing Waters ✨
11 x 14 • \$1150



SARAH E. BLUMENSCHNEIN

Albuquerque, NM
Lemons with Glass Bottles ✨
12 x 16 • \$850



SARAH E. BLUMENSCHNEIN

Albuquerque, NM
Sunflowers, Daisies, and Red Pears ✨
20 x 30 • \$2750



SARAH E. BLUMENSCHNEIN

Albuquerque, NM

The Pumpkins at the Bottom ✨

18 x 24 • \$1980



LAVERNE BOHLIN

Tijeras, NM

Angel Fire Path

17 x 12.75 • \$1080



LAVERNE BOHLIN

Tijeras, NM

Clouds over the Oxbow

8 x 10 • \$500



TOBI CLEMENT

Santa Fe, NM

Company is Coming ✨

11 x 14 • \$750



Sponsor Award

TOBI CLEMENT

Santa Fe, NM

Just Look UP! ✨

11 x 14 • \$750



ELIZABETH COOPER

Santa Fe, NM

Adobe Glow

11 x 14 • \$950



ELIZABETH COOPER

Santa Fe, NM
Golden One ✨
11 x 14 • \$950



ELIZABETH COOPER

Santa Fe, NM
Saddle Up • 12 x 9 • \$675



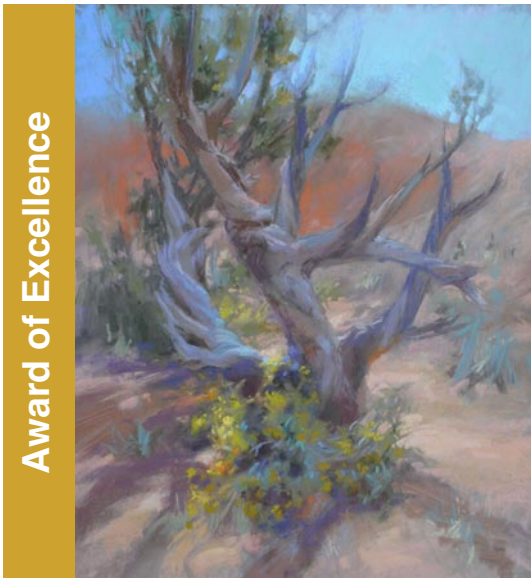
NIKKI COULOMBE

Hillsboro, OR
Blue Flag Iris ✨ 18 x 24 • \$750



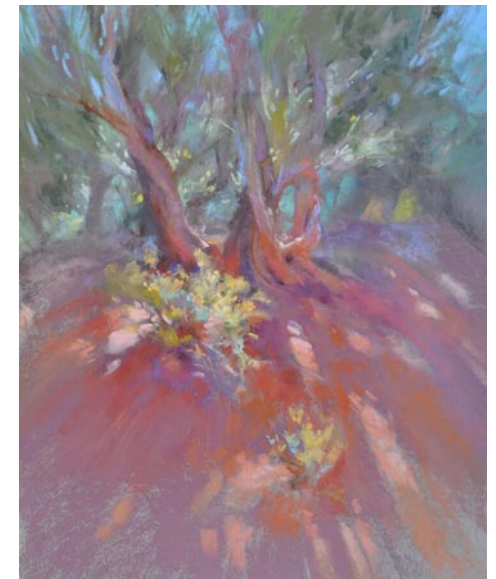
NIKKI COULOMBE

Hillsboro, OR
Luminosity ✨
18 x 24 • \$750



CHRISTINE DEBROSKY

Clarkdale, AZ
Scorched Survivor ✨ 24 x 20 • \$2850



CHRISTINE DEBROSKY

Clarkdale, AZ
Twist and Shout ✨
24 x 18 • \$2550



JOHN DeSPAIN
Placitas, NM
Broken Dreams
16 x 12 • \$750



JOHN DeSPAIN
Placitas, NM
Flower Power ✨
16 x 12 • \$800



JOHN DeSPAIN
Placitas, NM
John Ford Slept Here 2 ✨
11 x 14 • \$650



MARILYN DRAKE
Albuquerque, NM
After the Rehearsal
16 x 12 • \$1100



MARILYN DRAKE
Albuquerque, NM
Spectator ✨ 16 x 12 • \$1100



MARILYN DRAKE
Albuquerque, NM
Summer Casual ✨ 16 x 12 • \$1100



CHELSEA DUNCAN
Albuquerque, NM
Vermillion Cliffs, NM ✨ 20 x 26 • \$500



CHARLES EDMONDSON

Albuquerque, NM

Elect Judge Ortega ✨

18 x 26 • \$1500



CHARLES EDMONDSON

Albuquerque, NM

Wahoo 5 ✨

18 x 26 • \$1500

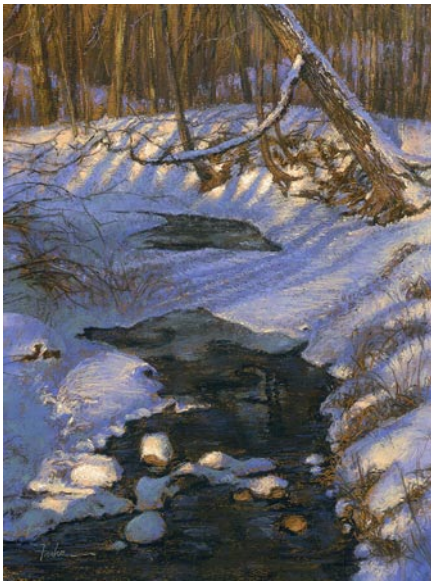


TED FUKA

Mokena, IL

Looking Up ✨

9 x 12 • \$825



TED FUKA

Mokena, IL

Shadow Crossing ✨

12 x 9 • \$825



BARBARA GARRETT

Billings, MT

Approaching Mystic Park

16 x 20 • \$1200



BARBARA GARRETT

Billings, MT

Yellowstone at Mystic Park

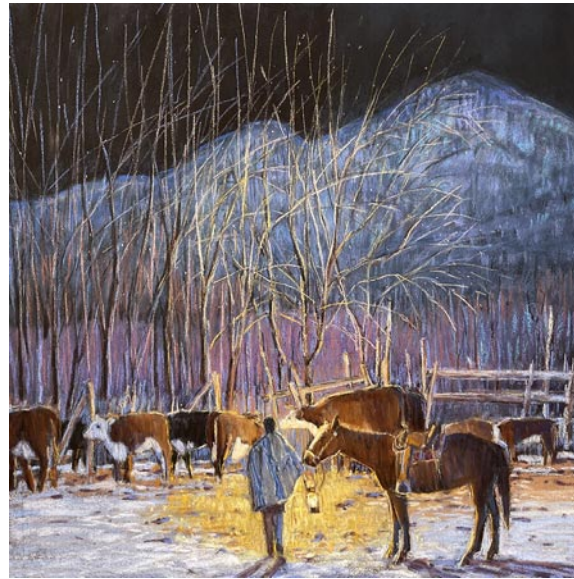
16 x 20 • \$1200



SUSAN GOODMUNDSON

Auburn, CA

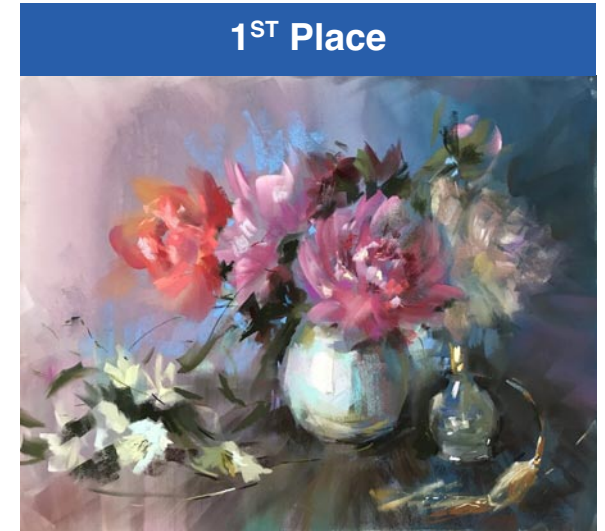
Carved Cameo Glass ✨ 19 x 11 • \$1200



VALERIE GRAVES

Ranchos de Taos, NM

Lantern Light • 15 x 15 • \$2200



1ST Place

TATSIANA HARBACHEUSKAYA

Las Vegas, NV

Arrangement with Peonies ✨

16 x 20 • \$1600



TATSIANA HARBACHEUSKAYA

Las Vegas, NV

Ikebana with Sunflowers

16 x 16 • \$1200

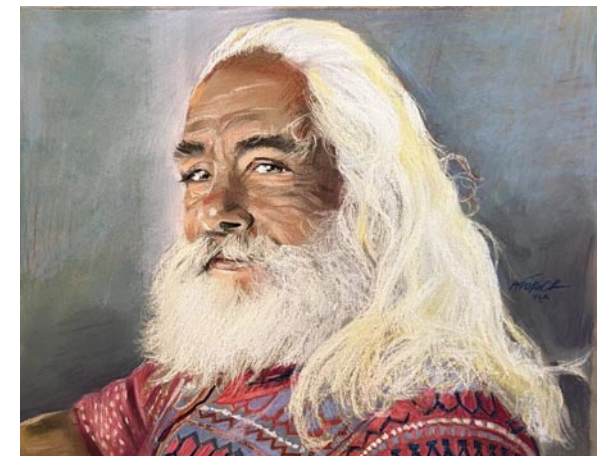


ANTHONY HEDRICK

Tega Cay, SC

Golden Hour

25 x 16 • \$2800



ANTHONY HEDRICK

Tega Cay, SC

Pedro Vargas

11 x 14 • \$2000



ANTHONY HEDRICK

Tega Cay, SC

Portofino, Alejandra Moreno

16 x 12 • \$2400

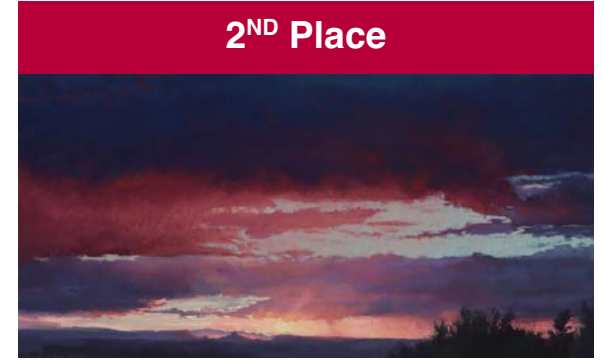


KATHY HOWARD

Scottsdale, AZ

The Sea

17 x 16 • \$2500



KATHERINE IRISH

Placitas, NM

As This Day Fades ✨

15 x 30 • \$2100

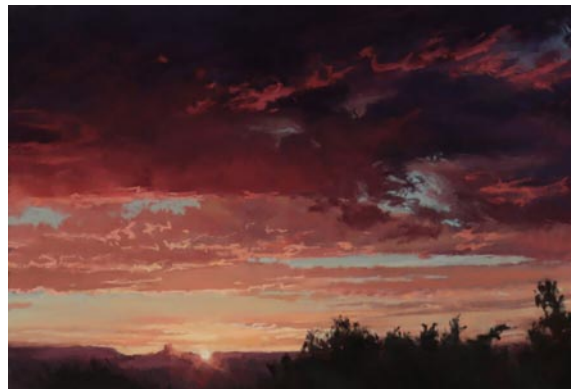


KATHERINE IRISH

Placitas, NM

Dream Tonight ✨

18 x 24 • \$1800



KATHERINE IRISH

Placitas, NM

Evening Spell ✨

12 x 18 • \$1100



PATTI JEFFRIES

North Chesterfield, VA

Shadow Play

16 x 12 • \$650



JANET JOHNSON

Menifee, CA

California Christmas ✨

19 x 14 • \$625



KENNETH KEITH

North Sioux City, SD

Near Medora

12 x 16 • \$750



KENNETH KEITH

North Sioux City, SD

Sedona Snow

12 x 16 • \$750



KENNETH KEITH

North Sioux City, SD

The Bridges of Sun Village

12 x 16 • \$750



MIKE KOLASINSKI

Chicago, IL

Rock Concert Light Show ✨

16 x 12 • \$900



BETTY LEHNUS

Sandia Park, NM

Far North, July

12 x 12 • \$800

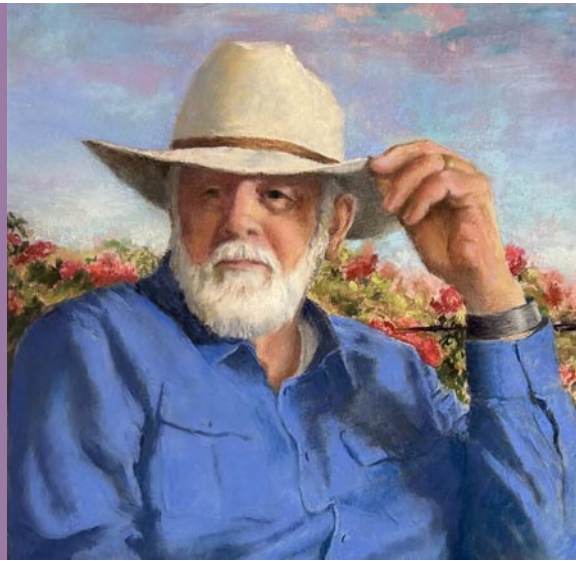
Sponsor Award



BETTY LEHNUS

Sandia Park, NM
Red and Gold ✨
9 x 12 • \$780

Sponsor Award



ANN LEWIS

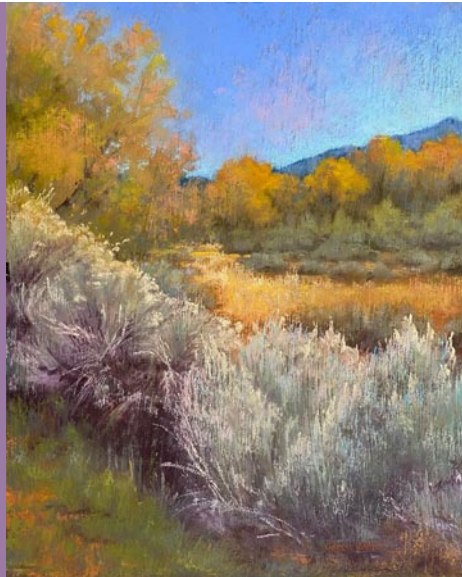
Rio Rancho, NM
Keeper of Roses ✨ 13 x 13 • \$1400



PANOLA LISLE

Albuquerque, NM
Straight Ahead
10.5 x 16 • \$995

Jeffrey Potter Memorial Award



GARCIA LOEHR

Tesuque, NM
A Walk through Taos ✨
20 x 16 • \$2300



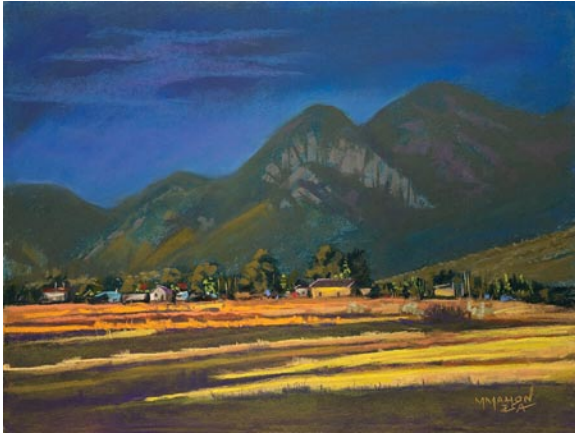
GARCIA LOEHR

Tesuque, NM
Colors of Winter - Nambe Badlands
16 x 16 • \$2200



MIKE T. MAHON

Rio Rancho, NM
Magic Window
12 x 16 • \$1200



MIKE T. MAHON
Rio Rancho, NM
Taos Blues
18 x 24 • \$2400



TATIANA MAKHT
San Jose, CA
Birches • 14 x 11 • \$1200



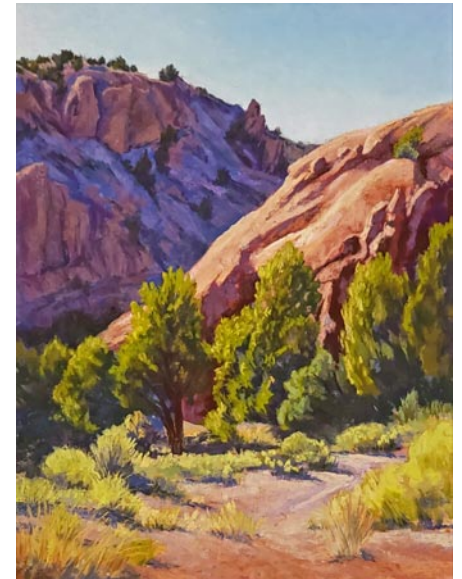
TATIANA MAKHT
San Jose, CA
Sagebrush ✨ • 11 x 14 • \$787



TATIANA MAKHT
San Jose, CA
Spring ✨
11 x 14 • \$1200



LEE McVEY
Albuquerque, NM
Chamisa and Sandia Mountains ✨
12 x 12 • \$1200



LEE McVEY
Albuquerque, NM
Shadow & Light, San Lorenzo ✨
16 x 12 • \$1425



LEE McVEY

Albuquerque, NM

Sunset, Window View ✨

12 x 16 • \$1425



EVELINE MILLER

Beaufort, SC

Evening Hues • 11 x 14 • \$1200



EVELINE MILLER

Beaufort, SC

Textured Twilight • 12 x 12 • \$1100



EVELINE MILLER

Beaufort, SC

Twilight Hues

12 x 12 • \$1100

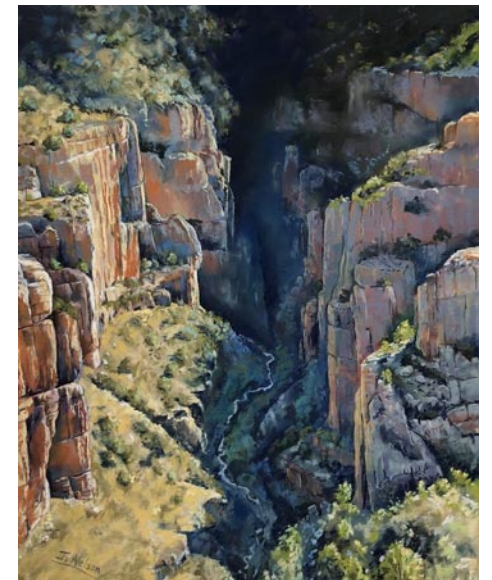


JUANITA NELSON

Aztec, NM

Dona Elena ✨

12 x 9 • \$850



JUANITA NELSON

Aztec, NM

Morning in the Salt River Canyon ✨

20 x 16 • \$1500



JUANITA NELSON

Aztec, NM

Sunrise on the Colorado ✨

16 x 20 • \$1500



Sponsor Award

GARY OZIAS

Las Cruces, NM

A Promise of Rain ✨ 14 x 18 • \$1000



GARY OZIAS

Las Cruces, NM

Cliffs of Santa Elena ✨

16 x 20 • \$1200

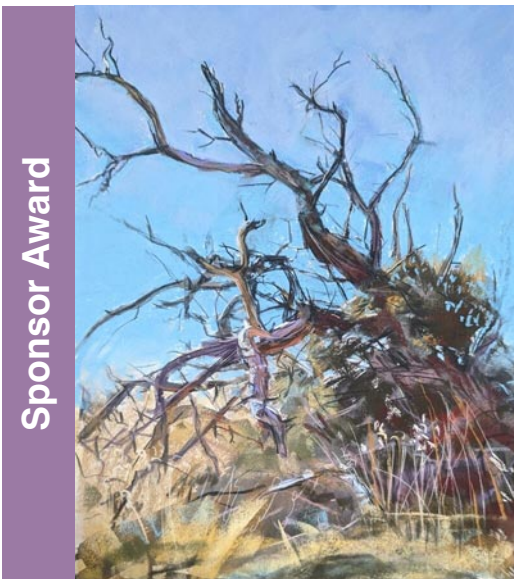


GARY OZIAS

Las Cruces, NM

Impending Storm

14 x 18 • \$900



Sponsor Award

RACHEL PEARSON

Los Alamos, NM

Endurance ✨

16 x 20 • \$550



RACHEL PEARSON

Los Alamos, NM

Saving Daylight ✨

11.75 x 15.75 • \$500



RACHEL PEARSON

Los Alamos, NM

The Old Juniper Tree ✨

11 x 14 • \$500

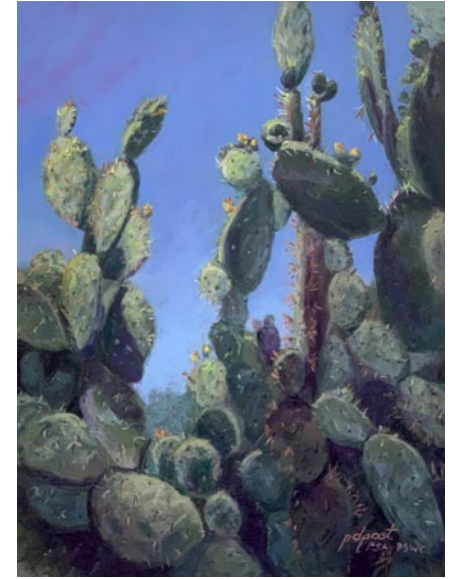


PEGGY POST

Pebble Beach, CA

Cactus Flower ✨

16 x 12 • \$1650



PEGGY POST

Pebble Beach, CA

Prickly Union ✨

16 x 12 • \$1650

Sponsor Award



MIKE RAY

Littleton, CO

Orange Top Mesa ✨

9 x 12 • \$600



MIKE RAY

Littleton, CO

Three Spot ✨

16 x 20 • \$1000



MIKE RAY

Littleton, CO

Yellow Gazebo ✨

9 x 12 • \$600



JANE ROBBINS
Saunderstown, RI
Clarity
16 x 12 • \$1500



JANE ROBBINS
Saunderstown, RI
Tripping the Light Fantastic ✨
16 x 12 • \$1500



LETITIA ROLLER
Santa Fe, NM
Forgotten Fence
12 x 16 • \$650



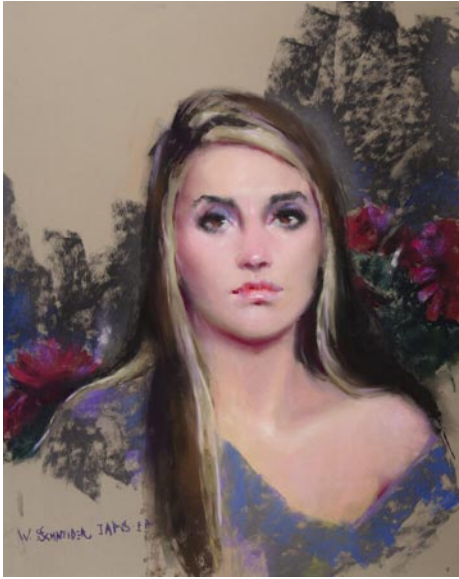
LETITIA ROLLER
Santa Fe, NM
Napoli
22 x 7.5 • \$550



LETITIA ROLLER
Santa Fe, NM
River Nairn
8 x 19.5 • \$600

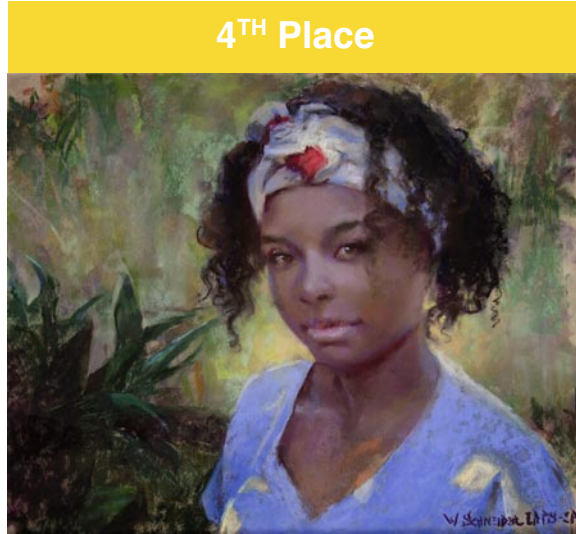


MARY SAWYER-MORSE
Santa Fe, NM
Santa Fe Summer
11 x 15 • \$800



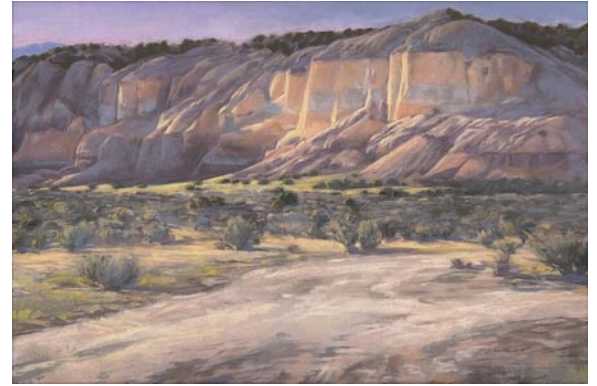
WILLIAM SCHNEIDER

Naples, FL
Mas Bonita ✨
20 x 16 • \$3250



WILLIAM SCHNEIDER

Naples, FL
The Caregiver ✨
16 x 20 • \$3250



NANCY SILVIA

Santa Fe, NM
Chama Evening ✨
22 x 34 • \$2400



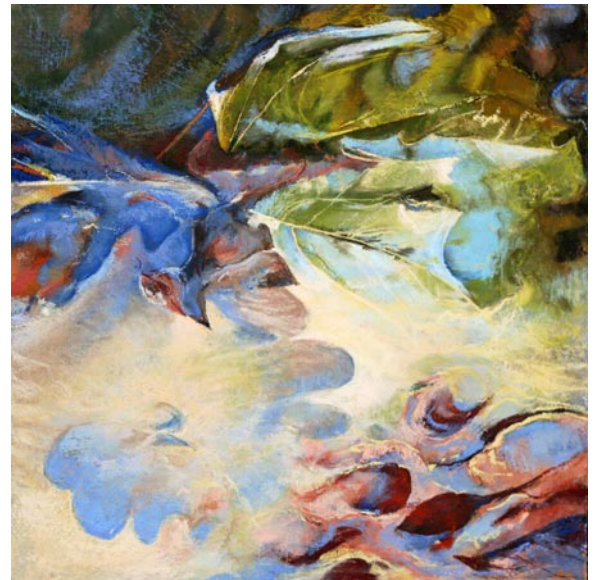
NANCY SILVIA

Santa Fe, NM
Lifting Clouds ✨
22 x 34 • \$2400



NANCY SILVIA

Santa Fe, NM
Rhapsody in Blue ✨
18 x 24 • \$1500



COLETTE ODYA SMITH

Wauwatosa, WI
Blown About
20 x 20 • \$2400



COLETTE ODYA SMITH

Wauwatosa, WI

Change of Plans ✨ 20 x 20 • \$2400



COLETTE ODYA SMITH

Wauwatosa, WI

Finding the Pulse ✨ 20 x 20 • \$2400



JUDY SPRAGUE

Poncha Springs, CO

Blue Agave

16 x 20 • \$1400



SARAH ST. GEORGE

Evergreen, CO

Cold Morning Light ✨ 16 x 16 • \$1850



SARAH ST. GEORGE

Evergreen, CO

Out of My Way! ✨ 18 x 18 • \$2500



SARAH ST. GEORGE

Evergreen, CO

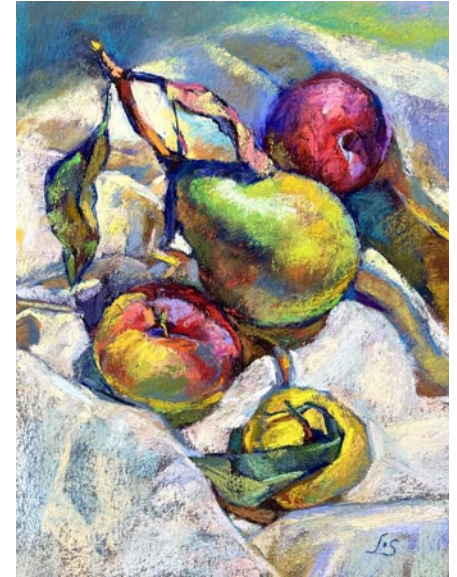
Unflappable ✨ 16 x 16 • \$1850



JANICE ST. MARIE
Santa Fe, NM
Beloved New Mexico
11 x 14 • \$800



JANICE ST. MARIE
Santa Fe, NM
Much Needed Rain ✨
9 x 12 • \$650



FANG SULLIVAN
New York, NY
Sun-kissed Pear ✨
9 x 12 • \$1200



FANG SULLIVAN
New York, NY
Sunshine and Shadow ✨
12 x 9 • \$1200



NICHOLAS TESLUK
Edgewood, NM
A Glorious Evening
16 x 16 • \$700



NORI M. THORNE
Sedona, AZ
Coffee Pot Rock
12 x 16 • \$900



NORI M. THORNE

Sedona, AZ

Devil's Garden Sunset ✨

12 x 16 • \$1000



3RD Place

NORI M. THORNE

Sedona, AZ

Waiting to Dance ✨

16 x 16 • \$1000



MARSHA TIDY

Palm Coast, FL

The Doll #2

15.5 x 12 • \$950

Sponsor Award



JUDE TOLAR

Stillwater, OK

Absolutely April ✨

14 x 11 • \$800



JUDE TOLAR

Stillwater, OK

Floral Fireworks ✨

9 x 12 • \$600



JUDE TOLAR

Stillwater, OK

Walking through Wildflowers

11 x 14 • \$800



BLANCHE LEVITT TORPHY

Bryn Mawr, PA
Pergola at Stoneleigh
8 x 10 • \$500



LORRAINE W. TRENHOLM

Ignacio, CO
Bee Gone ✨
14 x 20 • \$1150



LORRAINE W. TRENHOLM

Ignacio, CO
Geri and Gina ✨
12 x 18 • \$950



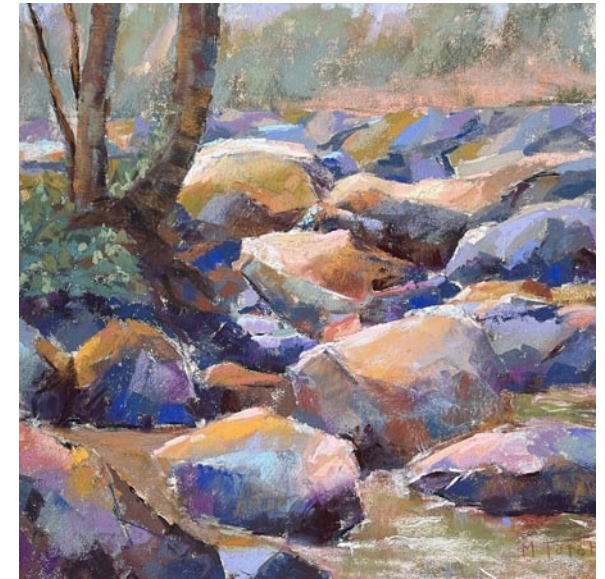
MARTINE TULET

Saint Cirq Lapopie, FRANCE
Against the Light
16 x 12 • \$750



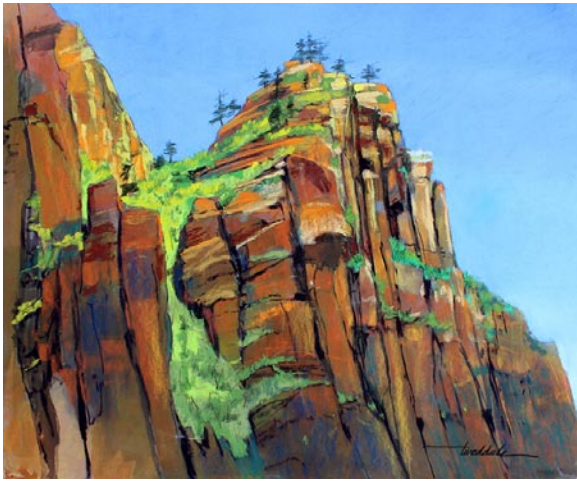
MARTINE TULET

Saint Cirq Lapopie, FRANCE
Bambous Reflection
16 x 16 • \$850



MARTINE TULET

Saint Cirq Lapopie, FRANCE
Sedelle's Rocks
12 x 12 • \$500



DOUG TWEDDALE

North Wales, PA
Oozing Green
20 x 24 • \$1500



DOUG TWEDDALE

North Wales, PA
Pines on the Edge
16 x 20 • \$1200



DOUG TWEDDALE

North Wales, PA
Springdale Face
20 x 24 • \$1500



HUANG YI

Shanghai, CHINA
Chaqueta
28 x 14 • \$10000



HUANG YI

Shanghai, CHINA
Pomegranate
18 x 18 • \$10000



HUANG YI

Shanghai, CHINA
Yingzhou Crab Banquet
27 x 15 • \$10000