

**PASTEL  
SOCIETY  
OF  
NEW  
MEXICO**

*Promoting the fine art of pastel painting since 1989.*

**March 25 - April 16, 2023**

Signature Members & Distinguished Pastelists present the

# **SIGNATURE MEMBERS SHOW**

**Dedicated to Margi Lucena, PSNM/DP**

**Millicent Rogers Museum**

Taos, NM

daily from 10am - 5pm

[www.millicentrogers.org](http://www.millicentrogers.org)



All paintings also in

**Interactive Online Gallery**

24/7

[www.pastelsnm.org](http://www.pastelsnm.org)



*Bosque November Revisited, Margi Lucena* ▶

# Welcome to PSNM's Signature Members Show

It is with great pride that the Pastel Society of New Mexico (PSNM) is exhibiting 68 paintings by Signature Members and Distinguished Pastelists at the Millicent Rogers Museum and simultaneously in a Virtual Online Interactive Gallery on the PSNM website. It is amazing an exhibition can be seen digitally around the world while also being displayed in such a beautiful museum.

This non-juried show presents work by talented PSNM artists who have consistently achieved entry into PSNM's juried exhibitions. PSNM is dedicating this exhibition to Margi Lucena, a Distinguished Pastelist who enthusiastically participated in PSNM's many events and exhibits before her untimely death in 2022.

To become a Signature Member, and have the privilege of appending "PSNM" to their signature, PSNM members receive points for their artistic excellence based on their acceptance into our juried painting exhibitions.

Additional points may be accrued by receiving an award at these shows. PSNM Distinguished Pastelists are those Signature Members who have received additional credit for various other artistic and service achievements.

As co-chair of this exhibition with Marilyn Drake, I want to acknowledge her help, guidance and assistance. Many thanks also to Lyn Jensen, our entry filemaster and to all those who have helped in any way with this exhibit. A tremendous "Thank You" to MRM Curator Michelle Lanteri, the staff and volunteers at the Millicent Rogers Museum who have been enthusiastic supporters of this exhibition!

Please enjoy this Show Catalog and explore the show in the Virtual Interactive Online Gallery, available on the PSNM website: [www.pastelsnm.org](http://www.pastelsnm.org)

Sincerely, *Letty Roller*



*l to r:* **Letitia Roller & Marilyn Drake**  
Exhibition Co-Chairs

## 2023 OFFICERS

**Sarah Blumenschein**

*President*

**John DeSpain**

*Vice-President*

**Nancy Schrock**

*Secretary*

**Gale Kaufman**

*Treasurer*

**Linda Boatwright**

*Past-President*



PSNM is a nonprofit arts organization formed in 1989 by a small group of artists seeking to promote the appreciation of the soft pastel medium as well as to contribute to the growing arts community in New Mexico. Although PSNM is based in New Mexico, our membership now includes artists from other states and countries.

Membership is open to anyone interested in pastels. Application form and payment options for annual dues are located on our website.

This entire exhibition catalog is posted on the Pastel Society of New Mexico website, where more information about PSNM, links to other arts organizations, and listings of future PSNM exhibitions can be found.

**Pastel Society of New Mexico**

**PO Box 3571 • Albuquerque NM 87190-3571 • [www.pastelsnm.org](http://www.pastelsnm.org)**

# Margi Lucena, PSNM/DP

As a tribute, this Signature Members Show is dedicated to Margi Lucena, who passed away Aug. 31, 2022 in Socorro at age 67.

In Margi's "Artist Statement" for Rob Nightingale, owner of Wilder Nightingale Gallery in Taos, she wrote: "For me, being a landscape artist in New Mexico is like living pure joy. I only need to step outside my back door to find inspiration. And, although panoramic mountain and desert views and beautiful skies are in every direction, it's often the little things...a chamisa in bloom, the shadow it casts across the ground, or the irrigation waterways that pass through the farm and ranchlands, that send me to my easel.

I have painted in different mediums over the years, but something special happened when I picked up pastels for the first time. This was truly a "hands on" experience. Everything changed. I had finally found a way to express what my heart was trying to say. The most rewarding thing is when that expression touches someone else's heart.

I can't really ask for more than that."

**Natasha Isenhour, PSNM/DP** who was a longtime friend of Margi's wrote:

In the quarter century we knew one another, we enjoyed a depth of friendship a person is fortunate to have even once in a lifetime, if that. We finished each other's sentences, communicated without words, shared our deep passion for art, beauty, music, poetry and great food all while making room for our differences, and loving and supporting each other through hardships and triumphs.

Margi wore many hats throughout her lifetime...she was a fiercely protective mother, wife, daughter, sister and friend. When we became friends in the late 90's, she was at a place in her life where she could begin wearing her "art" hat more and more. Children grown and thriving, and settled into a landscape she loved, Margi turned her passion toward her lifelong love of art. She had painted all her life in the spaces where she could, but now she was able to devote a larger part of her days to her work. I was already settled into giving an art career

a go, so early on she would come and paint at my house when she was still only painting in oil and watercolor. Soon, we would be sharing studio space and she was introduced to pastels. Her work was forever changed.

Margi's work showed, not only incredible natural talent for mark-making, but her sense for local color was legendary. Margi is the one who taught me to "see". I hadn't been a landscape painter when we began painting together, but on our many roadtrips, traveling 10's of 1000's of miles together over the years, she would point out the "blue" or "violet" in the distance. At that point, as observant as I thought I was, I had never really "seen". Once it clicked for me, I understood what a profound gift she had shared. Not only were we best friends, but she was a mentor to me and I believe that was a two way street for us in a variety of ways over the years.

Her work is an honest, spontaneous, and personal journal into her unique view of the world around her. She could truly take something that would never give you pause, and make you look at it and fall in love with it. That's because Margi told you exactly how she felt about it with every stroke of color. She painted emotion and love like no one else I know.

Margi was a survivor and a constant inspiration on how to keep moving through adversity. She would be so incredibly proud of the recognition here with her pastel family as the medium was, hands down, her greatest passion. I hope all of you will take a moment to look at her work and let it light a little fire in your heart to carry with you. She lit a raging inferno in mine decades ago and I will never let anything put that fire out, in equal parts for myself and for the best friend I have ever had.



Margi painting "en plein air" ►



# Margi Lucena, PSNM/DP

Below are paintings Margi completed at the 17th Annual Plein Air Invitational: March 6 - April 2, 2023. Sponsored by the Borrego Art Institute, in Borregos Springs, CA, the event focuses on the unique beauty and environmental significance of the Anza-Borrego Desert and the Borrego Valley. At the conclusion of the event, Margi received two awards: BEST PASTEL for *Coyote Canyon Creek* and ARTISTS CHOICE for "Body of Work".



*Soft Shoulder* • 12 x 24 • \$2400



*Last Chance*  
12 x 6 • \$1000



*Palo Verde Morning* • 12 x 16 • \$1300



*Sentinals*  
12 x 6 • \$1000



## Exhibition Paintings

### 67 Paintings by 29 PSNM & PSNM/DP Artists

Artists are listed alphabetically by last name. Sizes shown are image size (height x width).

All paintings  
in this  
exhibition are  
for sale.

Prices include frames. Applicable NM Gross Receipts Tax will be added at time of purchase. Shipping not included. Payment may be made by check, debit or credit card.

If you are interested in purchasing a painting, please contact *Nicholas Tesluk* at [psnm.nschair@gmail.com](mailto:psnm.nschair@gmail.com) or 505-908-8603

● next to a painting's title indicates it has been sold.



**JANET SHAW AMTMANN**

La Luz, NM

*Fall Magic*

11.5 x 8.5 • \$575



**JANET SHAW AMTMANN**

La Luz, NM

*Orchard's Surprise*

18 x 12.5 • \$750



**JANET SHAW AMTMANN**

La Luz, NM

*Winter in the Dunes*

8.5 x 11.25 • \$575





**SARAH E. BLUMENSCHNEIN**

Albuquerque, NM

*Hibiscus*

24 x 30 • \$2750



**SARAH E. BLUMENSCHNEIN**

Albuquerque, NM

*Sunflowers and Peppers*

24 x 20 • \$2200



**SARAH E. BLUMENSCHNEIN**

Albuquerque, NM

*Three Teacups, Stacked* • 12 x 9 • \$600



**LYLE BROWN**

Bernalillo, NM

*Evening Light* • 18 x 24 • \$1650



**LYLE BROWN**

Bernalillo, NM

*Waiting for the Cows* • 20 x 24 • \$1850



**TOBI CLEMENT**

Santa Fe, NM

*Farewell My Love* • 14 x 11 • \$750



**TOBI CLEMENT**  
Santa Fe, NM  
*Must You Go?*  
11 x 14 • \$700



**TOBI CLEMENT**  
Santa Fe, NM  
*Winter Welcome*  
11 x 14 • \$750



**MARILYN DRAKE**  
Albuquerque, NM  
*Faith*  
9 x 12 • \$575



**MARILYN DRAKE**  
Albuquerque, NM  
*New Chapter*  
16 x 12 • \$1100



**MARILYN DRAKE**  
Albuquerque, NM  
*Resilience*  
16 x 12 • \$1100



**CHARLES EDMONDSON**  
Albuquerque, NM  
*Almost Gone*  
18 x 26 • \$1250





**CHARLES EDMONDSON**

Albuquerque, NM

*Dusk*

18 x 26 • \$1250



**DIANE FECHENBACH**

Highlands Ranch, CO

*Middle Fork Afternoon*

9 x 12 • \$800



**DIANE FECHENBACH**

Highlands Ranch, CO

*Vespers* • 20 x 12 • \$1100



**GAYE GARRISON**

Bosque Farms, NM

*Green Robe*

12 x 18 • \$750



**GAYE GARRISON**

Bosque Farms, NM

*Summer Hat*

14 x 11.5 • \$600



**GAYE GARRISON**

Bosque Farms, NM

*Three Chicks*

12.5 x 9.75 • \$600





**KATHERINE IRISH**

Placitas, NM  
*A Scent of Rain*  
16 x 20 • \$1600



**KATHERINE IRISH**

Placitas, NM  
*A Winter Solstice Evening*  
15 x 30 • \$2100



**KATHERINE IRISH**

Placitas, NM  
*Chroma*  
12 x 18 • \$1100



**NATASHA ISENHOUR**

Socorro, NM  
*It'll Have to Wait*  
12 x 24 • \$2800



**KATHLEEN M. JACKSON**

Santa Fe, NM  
*Embudo Tank Revisited*  
12 x 12 • \$550



**KATHLEEN M. JACKSON**

Santa Fe, NM  
*Limes with Mortar*  
12 x 13 • \$550



**KATHLEEN M. JACKSON**

Santa Fe, NM

*Passage II*

14 x 21 • \$650

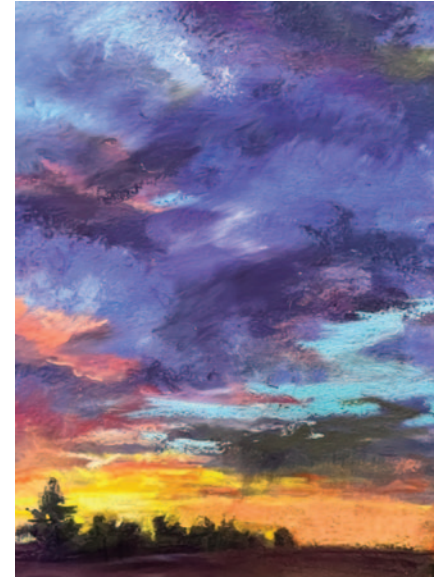


**SHARON JENSEN**

Albuquerque, NM

*Hope*

8 x 10 • \$650



**SHARON JENSEN**

Albuquerque, NM

*January Symphony* • 10.5 x 7.75 • \$650



**SHARON JENSEN**

Albuquerque, NM

*Where Paths Converge*

8.5 x 11.75 • \$675



**REBECCA KOEPPEN**

Ignacio, CO

*Edges*

18 x 24 • \$1200



**BETTY LEHNUS**

Sandia Park, NM

*Mountain Snow, Blue*

8 x 10 • \$550





**BETTY LEHNUS**

Sandia Park, NM  
*October*  
9 x 12 • \$750



**MIKE MAHON**

Rio Rancho, NM  
*Forest Sanctuary* • 16 x 12 • \$1200



**MIKE MAHON**

Rio Rancho, NM  
*San Miguel Crosswalk*  
24 x 30 • \$4200



**MIKE MAHON**

Rio Rancho, NM  
*Truchas Twilight*  
18 x 24 • \$2400



**MARYANN McGRAW**

Placitas, NM  
*Origin of Water Valle Grande*  
12 x 16 • \$775



**NANCE McMANUS**

Tijeras, NM  
*Sandy's Latest*  
20 x 30 • \$2400





**LEE McVEY**

Albuquerque, NM

*Chamisa, Clouds & Pedernal*

9 x 12 • \$975

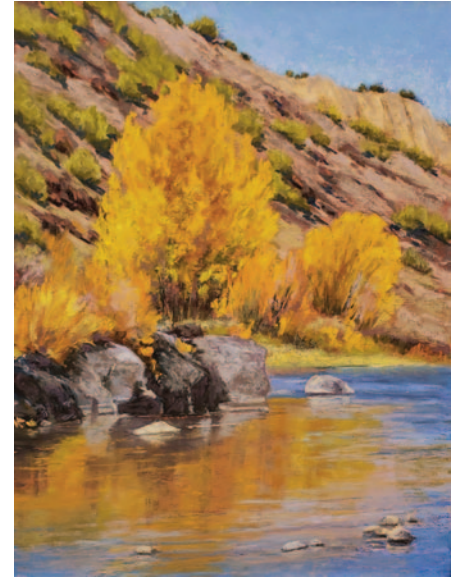


**LEE McVEY**

Albuquerque, NM

*Cliffs & Clouds*

8 x 10 • \$895



**LEE McVEY**

Albuquerque, NM

*Orange Tree on the Rio Grande*

12 x 9 • \$975



**PAUL MURRAY**

Santa Fe, NM

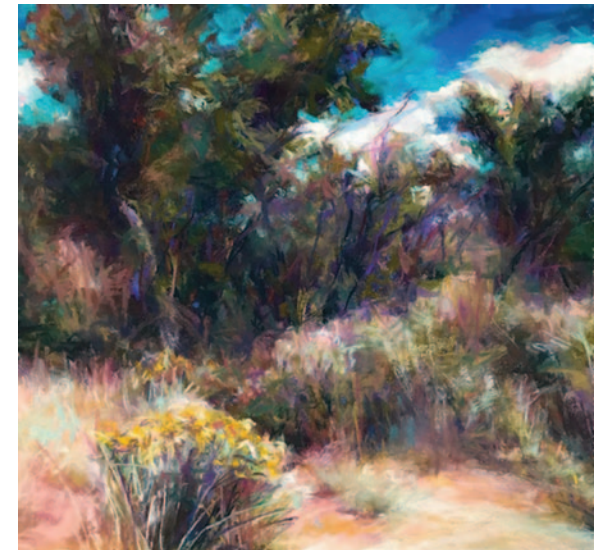
*The Wine Shed* • 16 x 17 • \$2450



**SUSAN RODEN**

Albuquerque, NM

*Fallen Chamisa* • 9 x 9 • \$600



**SUSAN RODEN**

Albuquerque, NM

*Overgrown Beauty* • 8.75 x 9 • \$600





**SUSAN RODEN**

Albuquerque, NM  
*Sunset + The Ridge*  
11 x 11 • \$850



**LETITIA ROLLER**

Santa Fe, NM  
*Valley Clouds*  
17.5 x 22.5 • \$550



**LETITIA ROLLER**

Santa Fe, NM  
*Whispering Clouds*  
11 x 16.5 • \$550



**NANCY SILVIA**

Santa Fe, NM  
above: *Evening Glow* • 12 x 30 • \$1300  
below: *Sun's Last Touch* • 9 x 24 • \$950



**NANCY SILVIA**

Santa Fe, NM  
*Toast to Evening*  
16 x 12 • \$750



**COLETTE ODYA SMITH**

Wauwatosa, WI  
*Cooling Effect*  
20 x 20 • \$2400





**COLETTE ODYA SMITH**

Wauwatosa, WI

*Taking a Deep Breath*

20 x 20 • \$2400



**COLETTE ODYA SMITH**

Wauwatosa, WI

*With Flying Colors* • 20 x 20 • \$2400



**JANICE ST. MARIE**

Santa Fe, NM

*above: Blue Sky over Mountains* • 6 x 12 • \$550

*below: Distant Mountains* • 6 x 12 • \$550



**NICHOLAS TESLUK**

Edgewood, NM

*My Grecian Heritage* • 12 x 18 • \$700



**NICHOLAS TESLUK**

Edgewood, NM

*Spirits Rising* • 16 x 16 • \$700



**BETTY TICHICH**

Los Ranchos, NM

*Ready to Pick* • 12 x 9 • \$850





**LORRAINE W. TRENHOLM**  
Ignacio, CO  
*Killdeer Walk* • 12 x 12 • \$650



**LORRAINE W. TRENHOLM**  
Ignacio, CO  
*Red and Blue Day* • 10 x 16 • \$750



**MARILYN WIGHTMAN**  
Santa Fe, NM  
*above: Cattle Paradise* • 9 x 18 • \$950  
*below: Chimayo Oasis* • 9 x 12 • \$700



**MARILYN WIGHTMAN**  
Santa Fe, NM  
*Inviting Slope*  
16 x 20 • \$1900



**BONNIE WILLIAMS**  
Brookeland, TX  
*above: Rio Grande Series No.4* • 12 x 24 • \$1800  
*below: Rio Grande Series No.5* • 12 x 24 • \$1800



**BONNIE WILLIAMS**  
Brookeland, TX  
*Rio Grande Series No.7*  
12 x 24 • \$1800