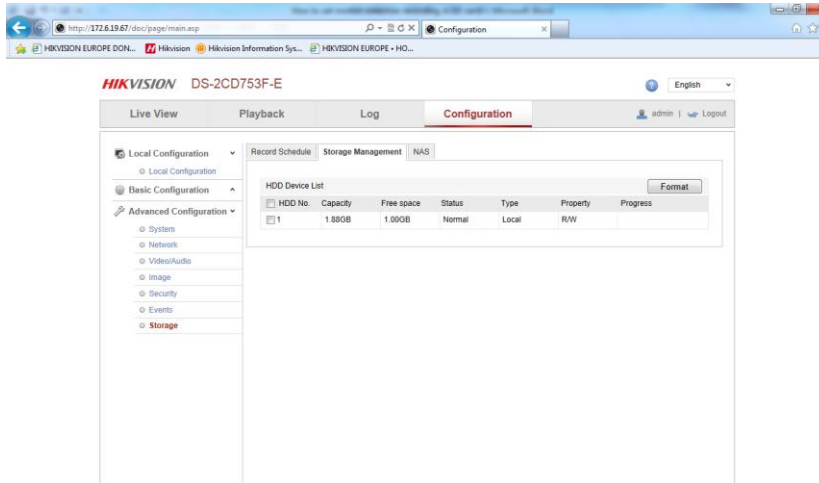
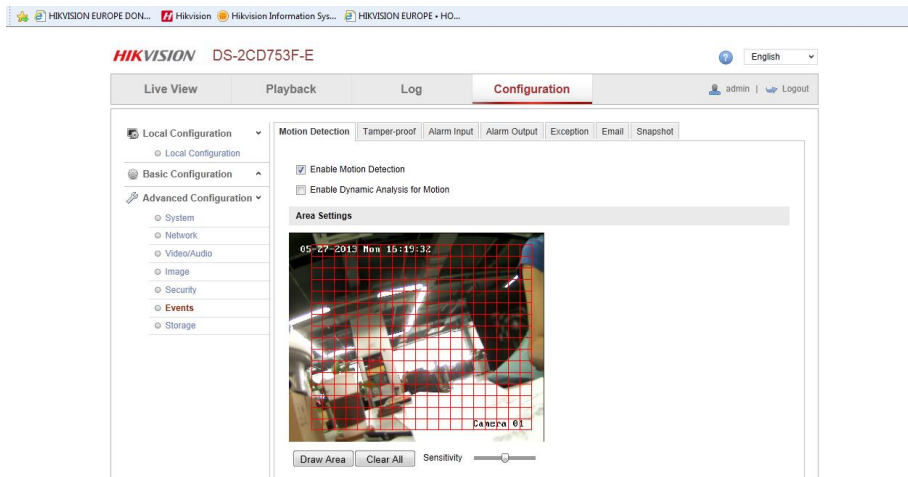


How to set motion detection recording in SD card

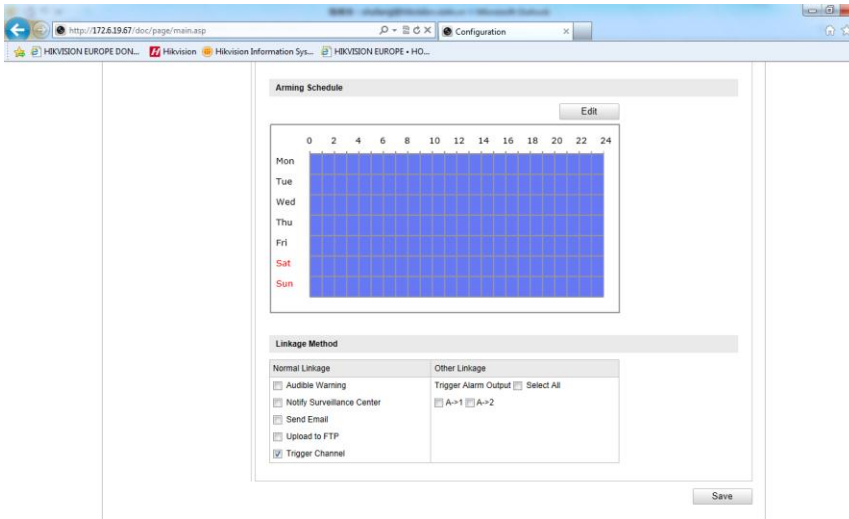
Step 1: Insert SD card in camera. Go to Configuration-> Storage-> Storage Management to check SD card status. Format it to make it at normal working status. See following:



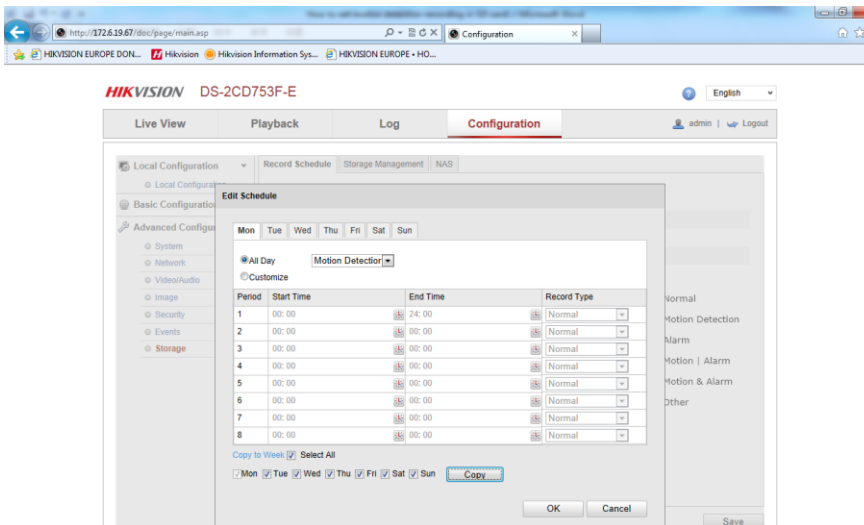
Step 2: Go to Event-> Motion Detection, Click 'Enable Motion Detection', draw the area which you want to set motion detection, adjust sensitivity. See following:



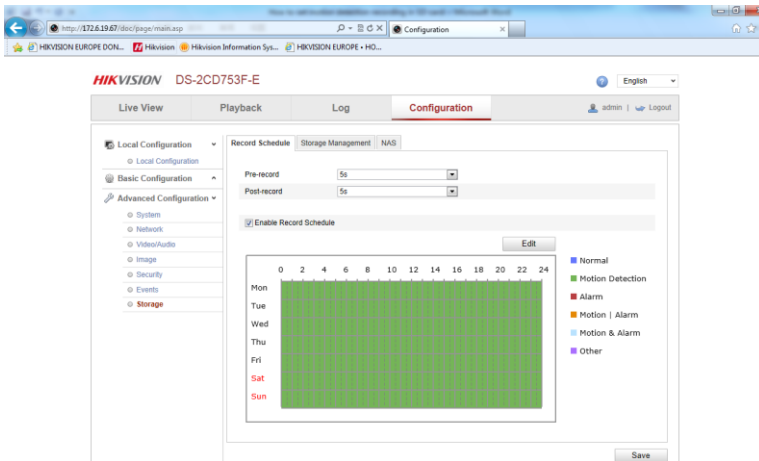
Click 'Edit' to set the time table of motion detection (e.g. 24h/7 days). Time table will show blue if you have set. Click 'Trigger Channel' in linkage method to set it trigger recording. See following:



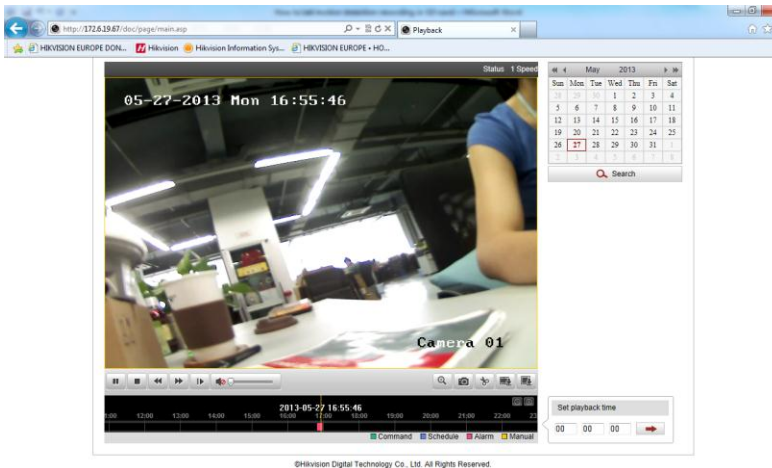
Step 3: Go Storage->Record Schedule, Click 'Enable Record Schedule', click 'Edit', will pop up this interface, set the time table and recording type(motion detection) as you want, click 'OK'. Take an example, 24h/ 7 days motion detection recording type will show as following:



Please check again when you back to the Record Schedule interface, motion detection will show green as it indicates on the right. Click 'Save' button. See following:



Step 4: here you have finished the configuration of motion detection recording in SD card. You can go to playback interface to search out the recording file after it record for about 5 mins. See following:



Ok, Now you have finished all settings.