

Title:	How to add IPC with POE function to NVR	Version:	v1.0	Date:	3/9/2017
Product:	Cameras, NVRs	Page:	1 of 6		

How to add IPC with POE function to NVR

Description

POE cameras could be added into NVR which supports POE function with both **Manual** mode and **Plug-and-Play** mode. When applying the Plug-and-Play mode, please kindly make sure the password of the camera is the same with the NVR, or you could set the password of the camera to 12345.

Note: Plug-and-Play mode could only be applied when the camera is added directly to the POE port of a NVR.

Preparation

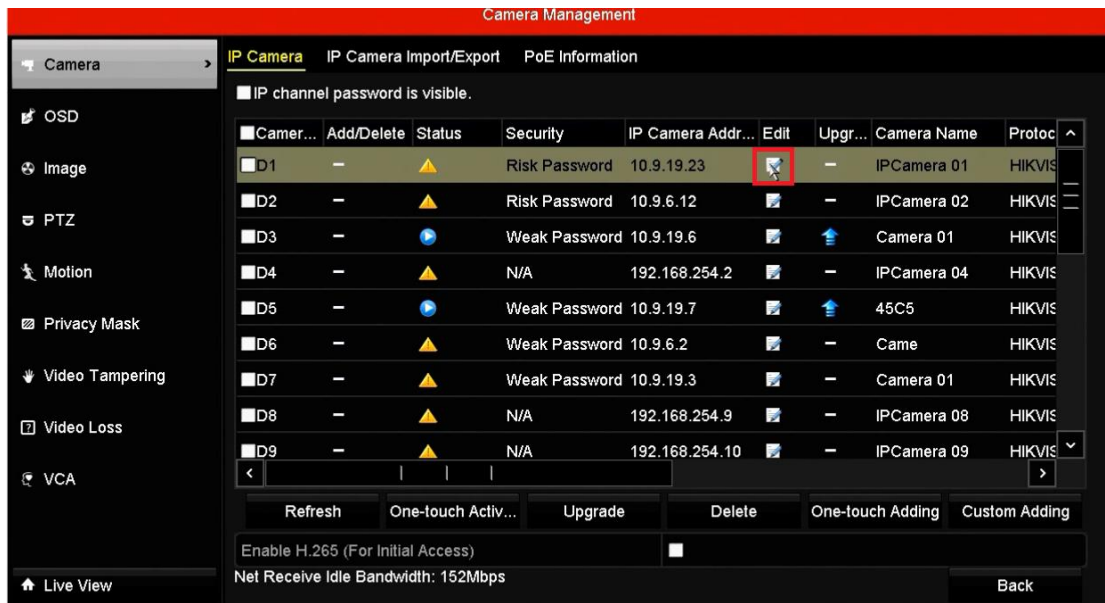
- 1, POE cameras
- 2, POE NVR
- 3, POE switch

How to add POE cameras to NVR using Manual mode:

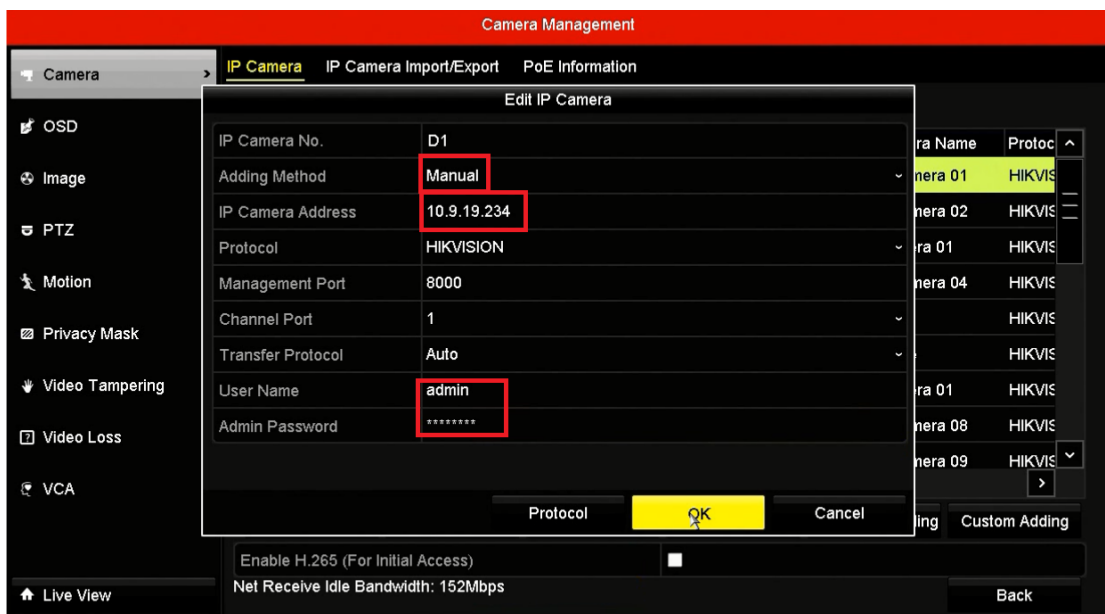
Steps:

- 1, Connect your camera to the POE port of the switch. Connect your NVR to the same switch.
- 2, Go to **Camera Management->Camera->IP Camera**, select any channel and click **Edit**.

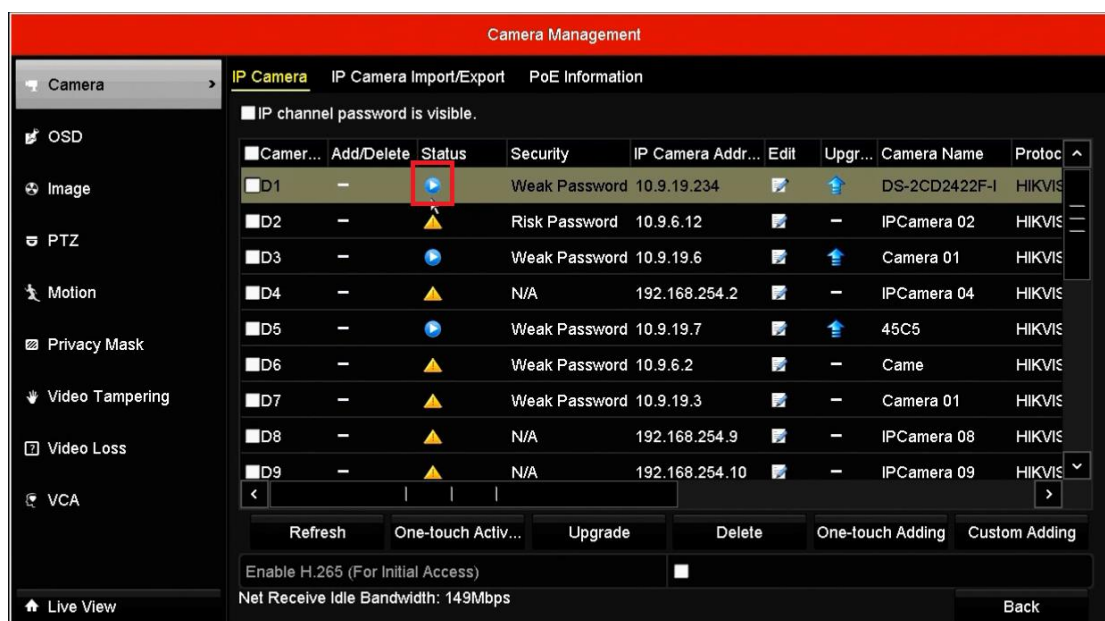
Title:	How to add IPC with POE function to NVR	Version:	v1.0	Date:	3/9/2017
Product:	Cameras, NVRs	Page:	2 of 6		



3, Select **Manual**, type in the **IP Camera Address & User Name & Admin Password**, click **OK**.



Title:	How to add IPC with POE function to NVR	Version:	v1.0	Date:	3/9/2017
Product:	Cameras, NVRs	Page:	3 of 6		



Note:

- 1, If you select the Manual mode to add the IPC with POE function, the password of the IPC could be different from NVR.
- 2, Do not press **One- touch Adding** unless the cameras' passwords are the same with the NVR password or the password of the camera is 12345.

How to add IPC with POE function to NVR using Plug-and-Play mode:

Steps:

- 1, Connect your camera to the POE port of the NVR. Assume you connect your camera to the POE port 2.
- 2, Go to **Camera Management->Camera->IP Camera**, highlight the second channel (D2) and click **Edit**.

Title:	How to add IPC with POE function to NVR	Version:	v1.0	Date:	3/9/2017
Product:	Cameras, NVRs	Page:	4 of 6		

Camera Management

IP Camera

IP channel password is visible.

Cameras	Add/Delete	Status	Security	IP Camera Addr...	Edit	Upgr...	Camera Name	Protoc
D1	-	●	Weak Password	10.9.19.234			DS-2CD2422F-I	HIKVIS
D2	-	▲	Risk Password	10.9.6.12		-	IPCamera 02	HIKVIS
D3	-	●	Weak Password	10.9.19.6			Camera 01	HIKVIS
D4	-	▲	N/A	192.168.254.2		-	IPCamera 04	HIKVIS
D5	-	●	Weak Password	10.9.19.7			45C5	HIKVIS
D6	-	▲	Weak Password	10.9.6.2		-	Came	HIKVIS
D7	-	▲	Weak Password	10.9.19.3		-	Camera 01	HIKVIS
D8	-	▲	N/A	192.168.254.9		-	IPCamera 08	HIKVIS
D9	-	▲	N/A	192.168.254.10		-	IPCamera 09	HIKVIS

Refresh One-touch Activ... Upgrade Delete One-touch Adding Custom Adding

Enable H.265 (For Initial Access)

Net Receive Idle Bandwidth: 149Mbps

Live View Back

3, Select Adding Method as **Plug-and-Play**, click **OK**.

Camera Management

IP Camera

Edit IP Camera

IP Camera No.	D2
Adding Method	Manual
IP Camera Address	Manual
Protocol	Plug-and-Play
Management Port	
Channel Port	1
Transfer Protocol	Auto
User Name	admin
Admin Password	

Protocol OK Cancel

Enable H.265 (For Initial Access)

Net Receive Idle Bandwidth: 149Mbps

Live View Back

Title:	How to add IPC with POE function to NVR	Version:	v1.0	Date:	3/9/2017
Product:	Cameras, NVRs	Page:	5 of 6		

Camera Management

Camera Management > IP Camera IP Camera Import/Export PoE Information

■ IP channel password is visible.

Cameras	Add/Delete	Status	Security	IP Camera Addr...	Edit	Upgr...	Camera Name	Protoc
■ D1	—	●	Weak Password	10.9.19.234	✎	⬆	DS-2CD2422F-I	HIKVIS
■ D2	—	●	N/A	192.168.254.5	✎	⬆	FISHEYE	HIKVIS
■ D3	—	●	Weak Password	10.9.19.6	✎	⬆	Camera 01	HIKVIS
■ D4	—	▲	N/A	192.168.254.2	✎	—	IPCamera 04	HIKVIS
■ D5	—	●	Weak Password	10.9.19.7	✎	⬆	45C5	HIKVIS
■ D6	—	▲	Weak Password	10.9.6.2	✎	—	Came	HIKVIS
■ D7	—	▲	Weak Password	10.9.19.3	✎	—	Camera 01	HIKVIS
■ D8	—	▲	N/A	192.168.254.9	✎	—	IPCamera 08	HIKVIS
■ D9	—	▲	N/A	192.168.254.10	✎	—	IPCamera 09	HIKVIS

Refresh One-touch Activ... Upgrade Delete One-touch Adding Custom Adding

Enable H.265 (For Initial Access)

Live View Back

Note:

- 1, Make sure your IPC camera has the same password with your NVR.
- 2, Do not press **One-touch Adding**.

Title:	How to add IPC with POE function to NVR	Version:	v1.0	Date:	3/9/2017
Product:	Cameras, NVRs	Page:	6 of 6		



First Choice for Security Professionals

***HIKVISION* Technical Support**