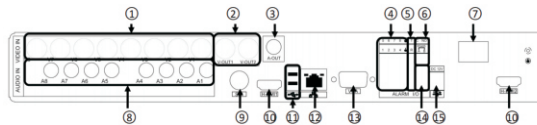


Fast Manual Instructions for Standard DVR

NO.	Function	NO.	Function	NO.	Function	NO.	Function
1	IR receiver	2	power indicator	3	alarm indicator	4	HDD indicator
5	record indicator	6	network indicator	7	status indicator	8	run indicator
9	return	10	PTZ control	11	playback	12	previous file
13	next file	14	record	15	slow play	16	rewind/pause
17	stop	18	fast play	19	direction	20	USB interface
21	play/pause	22	exit	23	OK	24	power switch

2.2 Rear panel



NO.	Function	NO.	Function	NO.	Function
1	video input	6	alarm output	11	USB interface
2	BNC output	7	power switch	12	network port
3	audio output	8	audio input	13	VGA output
4	alarm input	9	SDI input	14	RS485 interface
5	RS232 interface	10	HDMI output	15	DC12V input

3 Boot up/shut down & User login

3.1 HDD installation(Skip this if you don't need storage):
Install the HDD(Skip this if you don't need storage):



1.Install fixed screw for HDD



2.HDD data line and power line connection

3.2 Boot up

Connect to power,the indicator turns on,DVR boots up.

Note:1.Use matched adapter to avoid abnormal situation or damage.

2.Shut down power switch(some might have power switches)

3.3 Shut down

To shut down the device,there are soft-Off and hard-off.

soft-Off: Go to<MainMenu>-<Logout>-<Shutdown>

hard-off: Plug the power on the rear panel.

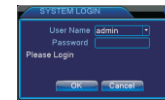
Note: 1. Power recovery: When DVR is shut down abnormally,reboot it,all recordings will be saved automatically and restore to the previous status.

2. Replace the HDD: Shut down the

power before replacing.

3.4 System Login

When DVR boots up, the user must login and the system provides the corresponding functions with the user purview. There are two user settings. The names are admin,default.Admin is default with no



Password protection: If the password is continuously wrong three times, the alarm will start. If the password is continuous wrong five times, the account will be locked. (Through rebooting or wait half an hour, the account will be unlocked automatically).

4 Network settings

Go to **【 Main Menu 】 > 【 System 】 > 【 Network 】**, as follows:
【 IP address 】: default is 192.168.1.10;
【 Subnet Mask 】: default is 255.255.255.0;
【 Gateway 】: default is 192.168.1.1.



Note: IP address of the speed dome must share the same network segment with the router and conform to its IP instead of conflicting with other IP to ensure the device access to network;Go to **【 main menu 】 > 【 system 】 > 【 network 】**, select DHCP Enable (Router should enable DHCP).

5 Record settings

DVR must contain HDD,as follows:

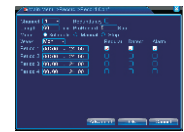
5.1 HDD management

Ater installing HDD,boot up the DVR,go to<main menu>-<Advanced>-<Storage> to format the HDD.Then set the HDD as read-write.

Note:At least one read-write disk is needed for normal recording.

5.2 Video settings

Go to<main menu>-<record>-<Record Conf.>.



【 Channel 】 Choose the corresponding channel number. Choose the all option to set the entire channels.

【 Redundancy 】 Choose the redundancy function to double backup the file.

【 Length 】 Set the time length of each video file between 1min to 120min. 60 minutes is default value.

【 Mode 】 Set video state: schedule, manual or stop.

Configuration:Record according to the set video type (common, detection)and time section.

Manual: Corresponding channel starts recording 24 hours non-stop.

Stop: Whatever state the channel is in, the corresponding channel recording stops when stop button is selected.

【 Period 】 Set the time section of common recording, The recording will start only among the set range.

【 Record type 】 Set recording type: regular,

detection, alarm

Regular:Record according to the set time section. The video file type is "R".

Detect:Within the set time section,trigger the motion detect, video blind,video loss or abnormal analysis. When above alarm is set as opening recording, the recording detection state is on. The video file type is M.

Alarm: rigger the external alarm signal in the set time section. When above alarm is set as opening recording, the "detection recording" state is on. The video file type is "A".

6 Playback

There are two ways for you to play the video files in the HDD

1.In the right shortcut menu

2.<Main Menu>-<Record>-<PlayBack>

Note: The HDD which saves the video files must be set as read-write or read-only state.

1 Statement

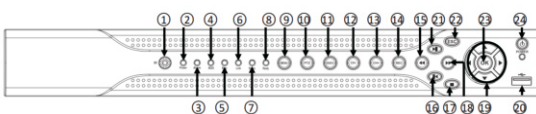
Thanks for purchasing from us.Please feel free to contact our service whenever you need help.This manual is applicable for Standard DVR series(8ch),which also works for other channels.

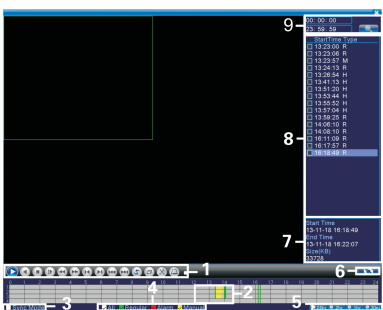
Only a few instructions for product operations are included,for more information,please read the CD or scan the two-dimension code at first page.

Any enhancement in product features shall be added into the manual consistently without further notice.

2 Appearance & interface Instructions

2.1 Front-end panel





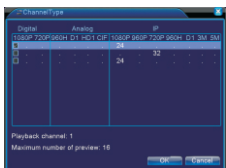
Pic. Record playback

1.Playback control	2.Time display	3.Synchronous	4.Video type
5.Time schedule options	6.search by time/switch mode	7.File Attributes	8.Listed files
9.search by time			

Double-click the file name to playback the video.

7 Channel management

Note: Not all models support this function
Go to<main menu>-<system>-<Digital>-<ChannelType>configure,you can connect IP camera under pure network or hybrid network.



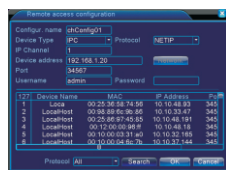
Go to<main menu>-<system>-<Digital>-<Digital channels> to add IP camera to digital channels.

【Enable】 ■ means enable,Settings are effective after enabling.

【Channel】 Select channel number,to add IP camera.

【Connection Mode】 Single connection and multi-connection, multi-connection can connect to several devices, device will be displayed one by one, tour interval can be set, no less than 10s;single channel can only connect to one monitoring device.

【Add】 Click add ,the following interface will be seen:



【 search】 : Search and display the IP address within the same LAN, such as IPC, DVR and NVR. Choose one IP address, device name, type, IP address, port and protocol will be entered automatically.

【 Protocol】 Support NETTP, ONVIF and all. Default is all.

【ok】 : Click ok to finish adding,go back to digital channel interface,choose added monitoring device to preview.

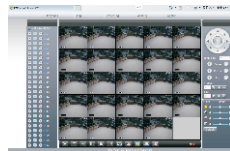
8 LAN Access

When connected to the network,login DVR to start remote monitoring via IE browser
8.1 DVR connection

Open IE browser, enter IP address, take 192.168.1.10 as an example, input http://192.168.1.10 to connect.

8.2 DVR login

Enter user name and password.(default user name is admin, no password). Change the administrator password timely after login,as follows:



Note: Plug-ins need to be installed if you login via IE browser.IE is default to intercept plugin.Please set IE security level.Go to<internet options>-<security>-<Customerized Level>-<ActiveX >,enable them all.Or go to our official website to download and install plug-ins(http://www.xmeye.net); Or install IE plug-in_V1.1.0.78.exe via CD.

8.3 Mobile Access

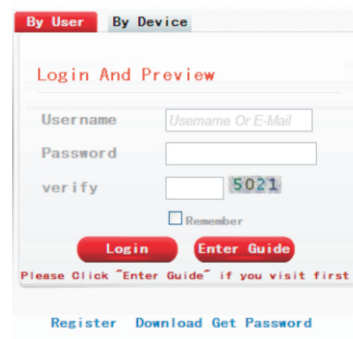
Network environment:wifi,3G
Mobile system:Android, Apple
Software Name:VmEyeCloud
Software Download:Google Market,app store
Note:When the device can access to the public network,you can realise public network monitoring via VmEyeSuper.

9 Public network access (cloud operation)

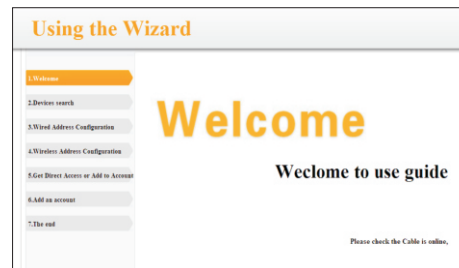
Cloud technology realises one step on the Internet, which greatly facilitates the customers in public network monitoring.For first use, please start here.If not ,just skip.

9.1 PC access

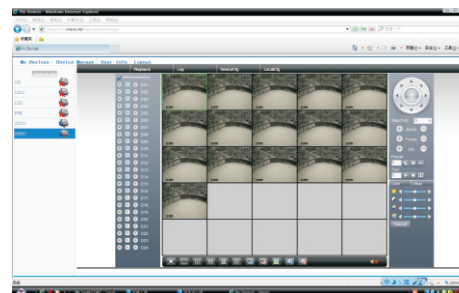
(1) Enter http://xmeye.net to login.



(2) Install step by step according to the guides.



(3)Click login to enter cloud service interface, as follows:



(4) After successful configuration,wherever and whenever you are, as long as you can surf the Internet ,you can get access to the device.

PC monitoring:Login
http://www.xmeye.net;
Login with user name and password(user name:guest password:123).

(5) Device list is on the left,click the device the preview.

9.2 Mobile Access

Network environment:wifi,3G
Mobile system:Android, Apple
Software Name:VmEyeCloud
Software Download:Google Market,app store



10 Product warranty card

Product Name		Model	
Purchase Date		Distributor	
Purchase Place			
Customer Name		Occupation	
Tel		Post Code	
Company			
Address			

Warranty:

Warranty period: One year. The Warranty Card only applies for the products you bought from us.

Please take care of it to get more efficient and better service.