

WIOT5016NZ 2 Gang Zigbee Switch Module (With Neutral)



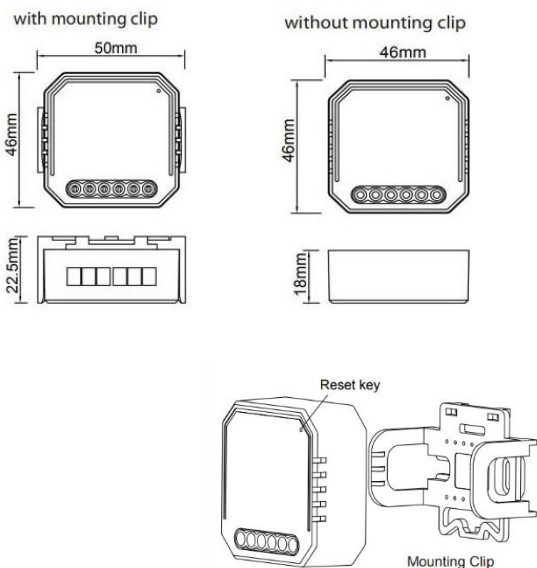
FEATURES

- With Neutral
- Work with Amazon Alexa/Echo Dot, Google Home & IFTTT
- Manage your devices via your mobile phone or voice control
- Create multiple schedules to turn on/off your electronic sets

SPECIFICATION

Product Type	Zigbee Switch Module (with Neutral)
Protocol	Zigbee 3.0
Voltage	220 – 240 V AC 50-60Hz
Current	2*5A
Max. load	2*1150W/2*150W for LED lamp
Operation frequency	2.400-2.484 GHz IEEE802.15.4
Operating Temperature	-10°C-40°C
Case Temperature	Tc: +80°C (Max.)
Transmission Distance	>150m.
Dimension (WxDxH)	46×46×18mm
IP rating	IP20
Certificates	CE, ROHS

DIMENSIONS



*EMC Standard (EMC)

EN 300 328 V2.1.1 (2016-11), EN301489-1 V2.1.1(2017-02),
EN301489-17 V3.1.1(2017-02), EN62311:2008, EN61000-6-1:2007,
EN61000-6-3:2007+A1:2011

*RoHS Standard (RoHS)

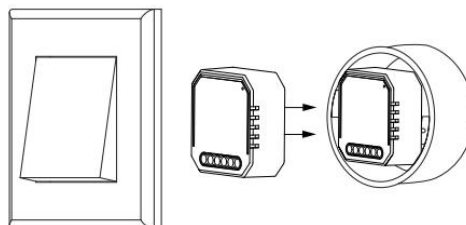
2011/65/EU, (EU) 2015/683

*Radio Equipment (RED)

ETSI EN 300 328 V2.1.1(2016-11)

*Safety Standard (LVD)

IEC 60669-2-1:2002/AMD1:2008/AMD2:2015, IEC 606691:1998/
AMD1:1999/AMD2:2006, EN 60669-2-1:2004+A1:2009+A2:2010,
EN 60669-1:2018



Gateway Zigbee