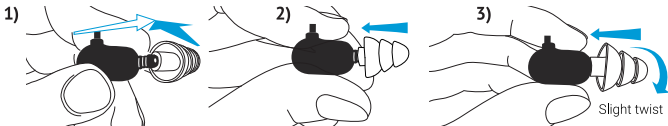


swimbud's **FLIP**

100% WATERPROOF headphones

By  UNDERWATER audio

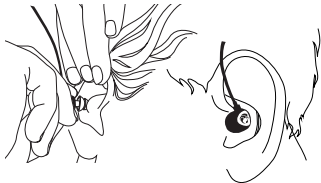
Attach earbud to headphone:



1) Start by holding the earbud at a 90° angle against the point of attachment at the very tip of the headphone. 2) While at a 90° angle, push the earbud onto the headphone so that it is covering headphone tip. 3) Once the headphone tip is securely inside the earbud, hold the earbud by its stem, twist and push down until the stem is flush with the headphone.

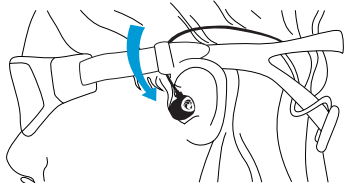
Insert earbud into ear:

Reach over head with opposite arm, grasp top of ear and pull up. With free hand, gently insert earbud tip-first into ear.



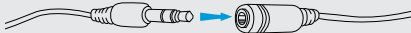
Tip: secure with goggles:

To help keep the earbud in your ear, tuck the cord beneath the goggle strap just above your ear. Wear it with or without a swimcap!



Do not push earbud so far into ear that you are unable to get it out. Inserting too deeply may cause injury.

The extension cord lets you add length when you need it!



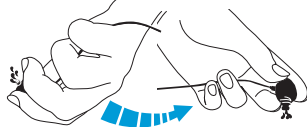
To get water out of headphones:

Method 1: Use a tissue



1. Twist the corner of a tissue into a thin point.
2. Insert it into the headphone tip to wick away any moisture inside.

Method 2: Shake water out



1. Hold headphone firmly so the tip sticks out between your fingertips.
2. Shake headphone vigorously back and forth to expel water out the tip.