

# swimbuds **CLASSIC**

**100% WATERPROOF** headphones

By  **UNDERWATER**audio

Thank you for buying Swimbuds Classic short-cord waterproof headphones—designed for flip turns!

This product is guaranteed for 1 year against manufacturer's defects. For complete warranty details, and to purchase replacement earbuds in more sizes, please see our website:

## Questions? Problems?

PLEASE **CONTACT US:**

**help@underwateraudio.com**

Toll-free: 1-877-849-0750

**Your referral is our greatest compliment!**

If you love your waterproof products, tell your friends! If you don't, tell us so we can make it right!



**Share** your experience:  
**Review** your Swimbuds Classic and listening device on Amazon.com!

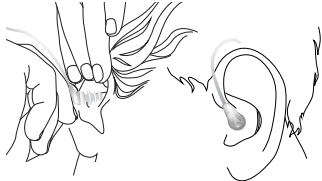
## Attach earbud to headphone:



**1)** Start by holding the earbud at a 90° angle against the point of attachment at the very tip of the headphone. **2)** Press the earbud onto the headphone tip, gradually tilting the earbud so that it ends up parallel with the tip. **3)** Once the headphone tip is securely inside the earbud, hold the earbud by its stem and push down until the stem is flush with the headphone.

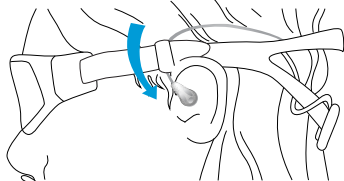
### Insert earbud into ear:

Reach over head with opposite arm, grasp top of ear and pull up. With free hand, gently insert earbud tip-first into ear.



### Tip: secure with goggles:

To help keep the earbud in your ear, tuck the cord beneath the goggle strap just above your ear. Wear it with or without a swimcap!



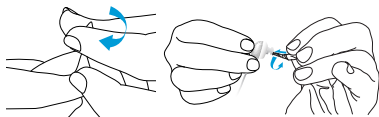
Do not push earbud so far into ear that you are unable to get it out. Inserting too deeply may cause injury.

The extension cord lets you add length when you need it!



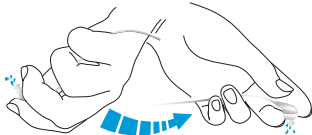
## To get water out of headphones:

### Method 1: Use a tissue



**1.** Twist the corner of a tissue into a thin point.  
**2.** Insert it into the headphone tip to wick away any moisture inside.

### Method 2: Shake water out



**1.** Hold headphone firmly so the tip sticks out between your fingertips.  
**2.** Shake headphone vigorously back and forth to expel water out the tip.