

# CHEERS, NICE 😊 TO MEET YOU



# LET ME CHANGE THE WAY YOU BREW



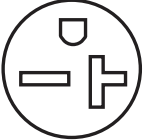



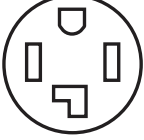
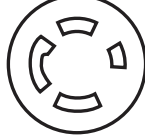
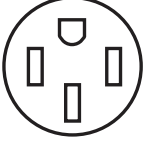
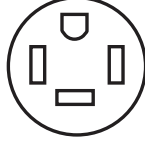
# THANK YOU FOR CHOOSING THE GRAINFATHER **G40**

Get started by following these instructions on how to assemble and use your **G40**. We recommend reading the following safety information before use. Please also find enclosed, advice for cleaning and storing your **G40**.

## WARNING! (NORTH AMERICA 220V ONLY)

Please check your unit rating label for the voltage. If your unit is a North American 220V product, the power cord, control box and boiler body included in the box are designed to be used together with a 220V supply. Using any of these components with another product may result in hazards and equipment damage.

### SOCKET GUIDE (NORTH AMERICA 220V ONLY)

POWER SUPPLY SOCKET	DESCRIPTION	COMPATIBILITY
 <b>NEMA 6-20R</b>	3-pin workshop and power tools supply.	Brewing system is compatible using power cord supplied in-box.
 <b>NEMA L6-20R</b>	3-pin workshop and power tools supply.	Brewing system is compatible by using an adapter that includes a ground connection and has appropriate electrical certification.
  <b>NEMA 10-30R</b> <b>NOT SUITABLE</b>	3-pin laundry dryer supply, most common installation prior to 1996.	This power supply socket is <b>NOT SUITABLE</b> for use with the brewing system. This socket provides hot-hot-neutral connections. The brewing system requires a ground connection to perform safely in the event of an electrical fault.
  <b>NEMA 14-30R</b> <b>NEMA L14-30R</b>	4-pin modern laundry dryer supply, commonly installed after 1996.	Brewing system is compatible by using an adapter that includes a ground connection and has appropriate electrical certification.
  <b>NEMA 14-50R</b> <b>NEMA 14-60R</b>	4-pin electric oven supply.	Brewing system is compatible by using an adapter that includes a ground connection and has appropriate electrical certification.

# **SAFETY** INFORMATION

**NOTE:** Not following the safety information below could result in serious injuries and may void your warranty.

1. Read all instructions before using the Grainfather G40.
2. If the supply cord is damaged, it must be replaced by the manufacturer, its service agent, or a qualified person to avoid a hazard.
3. This appliance is intended to be used in household and similar applications such as staff kitchen areas in shops, offices, and other working environments; farmhouses and by clients in hotels, motels and other residential type environments; bed and breakfast type environments; catering and similar non-retailed applications.
4. The appliance is for indoor use only.
5. The appliance is not suitable for installation in an area where a water jet could be used.
6. The appliance must not be cleaned by a water jet.
7. The appliance must be in an upright position at all times when in use.
8. The appliance is only to be installed in locations where it can be overseen by trained personnel.
9. The installation of a residual current device (RCD) having a rated residual operating current not exceeding 30 mA is advisable.
10. The A-weighted sound pressure level of the appliance should be below 70 db.
11. Always unplug the unit before cleaning, during storage or in the event of a fault.
12. The boiler, lid and pipes may reach temperatures of up to 100°C (212°F) and therefore must be handled with caution. Never move the unit while it is in operation.
13. Handles on the side of the unit are only meant for transportation once the unit is empty and in a cooled, non-use state.
14. Please note that a two-person or mechanical lift is recommended when using larger grain bills on this system. A single person lift may lead to serious injury.
15. Access of the service area is restricted to persons having knowledge and practical experience of the appliance. The maximum and minimum ambient temperatures for normal use of the appliance is: -20°C (-4°F) to 40°C (104°F).
16. To protect against fire, electric shock, and injury, do not immerse cord/plugs in water or other liquid.

**THE FOLLOWING STATEMENT APPLIES TO GRAINFATHER PRODUCTS SOLD IN EUROPE:**

- This appliance can be used by children aged from 8 years and above and persons with reduced physical, sensory or mental capabilities or lack of experience and knowledge if they have been given supervision or instruction concerning use of the appliance in a safe way and understand the hazards involved.
- Children shall not play with the appliance. Cleaning and user maintenance shall not be made by children without supervision.

**THE FOLLOWING STATEMENT APPLIES TO GRAINFATHER PRODUCTS SOLD IN THE UNITED KINGDOM:**

- This appliance can be used by children aged from 8 years and above and persons with reduced physical, sensory or mental capabilities or lack of experience and knowledge if they have been given supervision or instruction concerning use of the appliance in a safe way and understand the hazards involved. Children shall not play with the appliance. Cleaning and user maintenance shall not be made by children without supervision.
- Means for disconnection must be incorporated in the fixed wiring in accordance with the wiring rules.
- The fixed wiring insulation must be protected, for example, by insulating sleeving having an appropriate temperature rating.

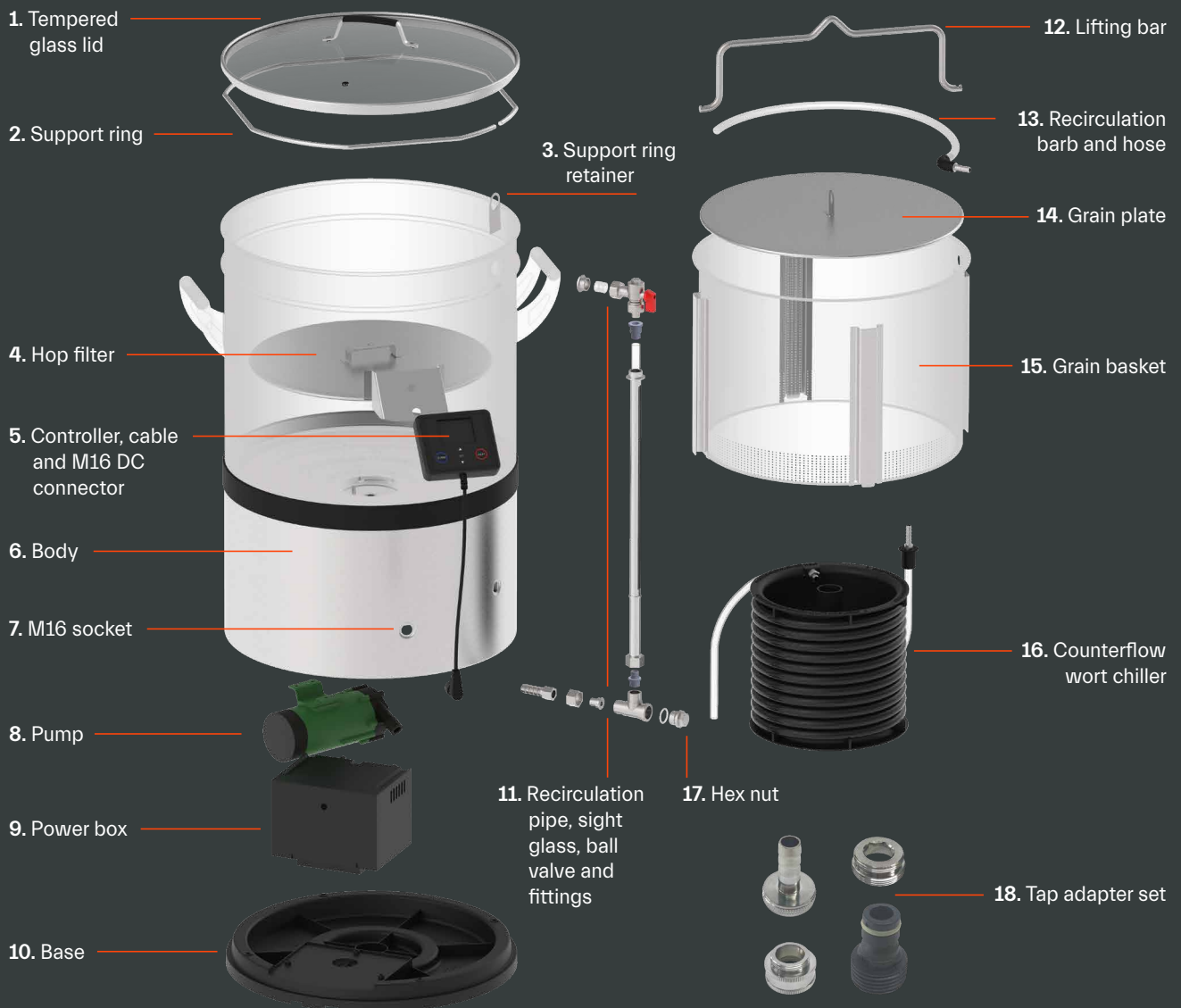
**THE FOLLOWING STATEMENT APPLIES TO GRAINFATHER PRODUCTS SOLD IN AUSTRALIA AND NEW ZEALAND:**

- This appliance is not intended for use by persons (including children) with reduced physical, sensory, or mental capabilities, or lack of experience and knowledge, unless they have been given supervision or instruction concerning use of the appliance by a person responsible for their safety.
- Children should be supervised to ensure that they do not play with the appliance.

# ANATOMY

## DIAGRAM

### & PARTS LIST



**NOTE:** The full spare parts list for the G40 is available online: [help.grainfather.com](http://help.grainfather.com)

# PRE-BREWING ASSEMBLY

Before use, we recommend cleaning your **G40** and all of its components using the Grainfather High Performance Cleaner. For detailed cleaning instructions, see page 14.

## 1. INSTALLING THE FILTER

Take the hop filter (4) and place it into the base inside the **G40** body (6). It should be a tight fit and you'll need to apply some pressure to make sure that it is securely in place.



## 2. ATTACHING THE CONTROLLER

Remove the **G40** controller (5) and the power cable from the packaging, and place the controller securely on the bracket on the front of the unit. Next, remove the small cap from the M16 socket (7). Plug the controller cable and M16 DC connector into the M16 socket and tighten the securing nut.



## 3. CONNECTING TO POWER

Take the main power cable and plug it into the base at the back of the **G40**. Next, plug the other end of the cable into a suitable power socket (15 amp in US/CA, 16 amp in EU, 13 amp in UK, or 10 amp in AU/NZ). The display screen on the controller should now turn on, however if this does not happen, please check that both the controller cable and the M16 DC connector are securely attached, and check the main power cable.

**NOTE (NZ/AU ONLY):** The **G40** has a default 10 amp mode, but it can also be used in 15 amp mode if you wish to add more power to your system. For instructions on how to enable 15 amp mode, please go to page 15.

# THE **G40** CONTROLLER

The **G40** smart controller has built-in wireless connectivity, allowing you to use your mobile device as a remote control. Connect to the free Grainfather App for step-by-step brewing and access bazillions of recipes.

## CONNECTION SETUP

When you first turn on the controller, you will be greeted with the connection setup screen. Press 'set' to go to the default screen.

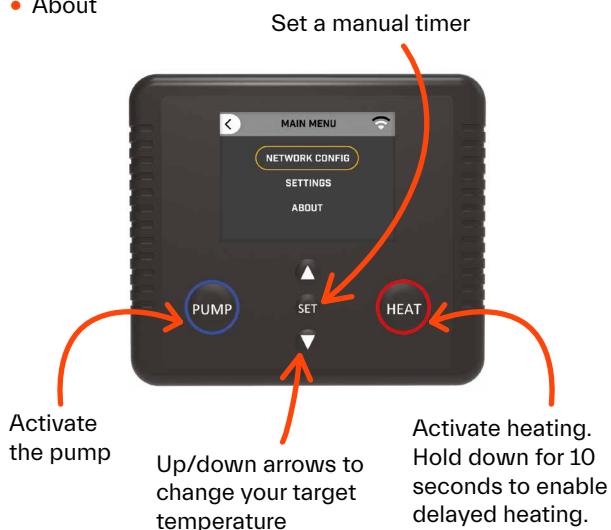
## DEFAULT SCREEN

The default screen shows the current temperature and target temperatures, unit symbol (Celsius or Fahrenheit), timer (when active), wireless connection status symbol and power mode (for those in AU/NZ).

## MAIN MENU

This screen displays the main menu options:

- Network configuration
- Settings
- About



## NETWORK CONFIGURATION

On this screen, you can add a new wireless network and connect your **G40** controller. To add a network, select 'add new network', then follow the instructions on the next page. If you've previously connected your **G40** to other networks, you can also clear these here.

## SETTINGS

This screen displays the main settings:

- **Change units:** choose between Celsius or Fahrenheit.
- **Calibrate temperature:** the **G40** has two probes that are NTC (negative temperature coefficient) type temperature sensors. An NTC thermistor uses electrical resistance properties of ceramic or metal composites to measure temperature. These sensors are accurate to 0.050°C (0.025 °F). This feature allows for an offset to be applied to the reading of the temperature probe if it is inaccurate. This should only be used if the temperature probe is compared to a certified calibrated thermometer which has a resolution of +/-0.010°C (0.005°F).
- **Boil temperature:** here you can adjust your boiling temperature based on the elevation of your brewing location. To use this function you can find the altitude of your location online, and also the boiling point of water at that altitude. Change the boil temperature from 100°C (212°F) to your new boil temperature.
- **Buzzer settings:** within this section you can select silent mode for your controller. When enabled, you'll no longer hear beeping to alert you when you've reached the next step during your brew.
- **NZ/AU only:** this is where you can change your unit from 10 amp to 15 amp mode if you choose to add more power. See page 15 for further details.

## ABOUT

This is where you can find details about your device. When connected to the internet, you can also check and install new updates to the **G40** controller from here.

# WIRELESS CONTROL & APP INTEGRATION

For the ultimate brewing experience, connect your controller to the Grainfather App.

1. Make sure that your wireless network reaches the location where you will be using your G40. While a wireless connection can be made over long distances, we recommend placing your unit within 10m (30ft) of the wireless router. If you wish to use your G40 further away, we recommend using a wireless range extender to avoid connection issues.

2. Download the Grainfather App on your mobile device from the App Store or Google Play Store and register an account if you're a new user.



SCAN AND  
EXPLORE THE **FREE**  
GRAINFATHER APP

3. When you first switch on the controller, you will be greeted with the connection setup screen. If you do not see the screen below, then press the 'set' button on the controller and go to 'network config' then 'add new network'. Once on the connection setup screen, open the Grainfather App on your mobile device.

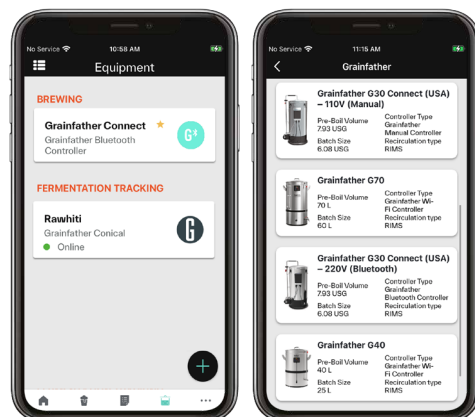


4. Once in the app, navigate to the equipment screen. The equipment screen shows all the brewing and fermenting equipment that you have set up on your account.

**NOTE:** The following screen layouts depict an iOS device and may differ slightly for Android.

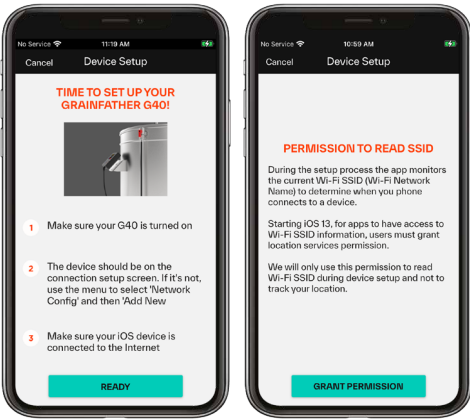
5. To add a new device, tap on the '+' icon on the bottom right of the screen and select 'brewing equipment'.

6. Select 'Grainfather' on the list of brands and subsequently select 'Grainfather G40' on the list of equipment.





**7.** On the device setup screen tap 'ready'. Your mobile device may now request certain permission(s) required to connect with the **G40** and may vary for different devices. Accept all requests.

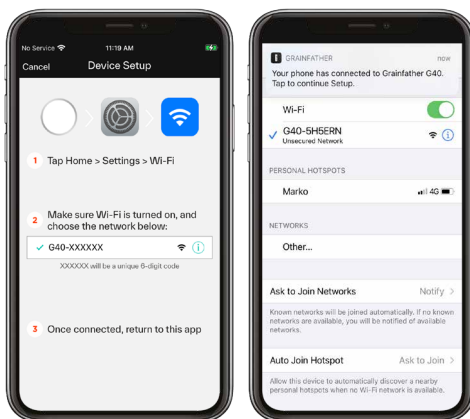


**8. FOR ANDROID USERS**

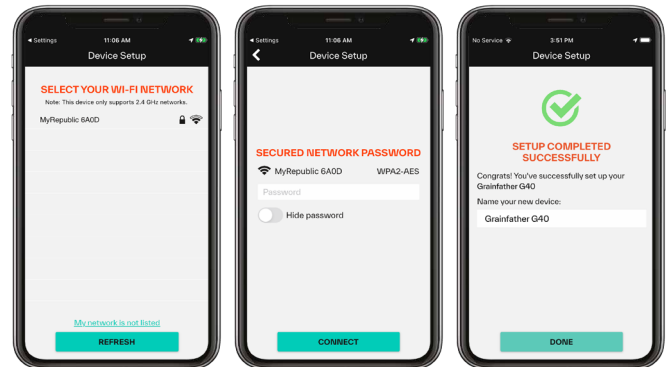
If setting up the **G40** via an Android device, choose your controller in the list (see step 10 next).

**9. FOR iOS USERS**

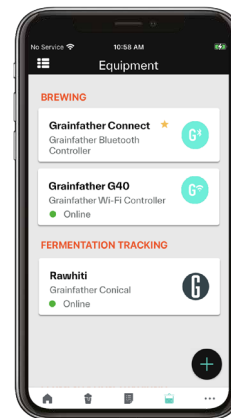
If setting up using an iOS mobile device, follow the instructions on the screen to connect your mobile device to the **G40**. Once the connection is established you will receive a notification on your mobile device. Tap the notification to return to the Grainfather App. You will automatically return to the device setup screen.



**10.** Once your phone has successfully connected to the **G40** (Android and iOS), select your wireless network from the list and enter in your network password, and then tap 'connect'. Once completed, add a name for your device and press 'done'.



**11.** Set up is now complete and you will return to the equipment screen. Select your Grainfather **G40** to enter the controller interface.



**12.** On the **G40** controller, you will be prompted to grant permission for remote control. Press the 'set' button and select 'yes'. The **G40** is now ready for you to start controlling your brew session via your mobile device.

**NOTE:** This permission request for remote control is in accordance with IEC/EN 60335-1 and will appear each time you connect to the **G40** via a mobile device.



Within the Grainfather App you can now select recipes or even create your own. You can also use the step-by-step brewing system to brew confidently.

# BREWING ON THE **G40**

You are now set up and ready to start brewing! Follow these instructions to guide you through your brew on the **G40**.

## 1. ADD THE MASH WATER

Place your **G40** on a flat, stable surface before you start brewing. We recommend positioning your **G40** on the floor due to heavy lifting that is required later in the brewing process. Add the volume of mash water required by your recipe – you can use the advanced calculators available on the Grainfather App.

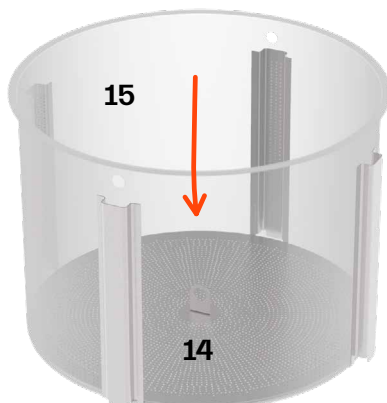
**NOTE:** Ensure that the recirculation ball valve is open during this step to avoid a pump airlock.

## 2. SET THE MASH/STRIKE TEMPERATURE

Using the **G40** controller or your mobile device, set the required mash temperature and press the 'heat' button to begin heating. Place the lid on the **G40** to reduce the heating time. At this stage, if your **G40** is connected to the Grainfather App, you can run your brew session remotely from your mobile device.

## 3. ASSEMBLE THE GRAIN BASKET

Place the grain plate (14) inside the grain basket (15) and ensure that the plate is sitting firmly on the bottom of the basket.



## 4. INSTALL THE GRAIN BASKET

Slowly insert the assembled grain basket into the **G40**. Ensure that the top of the grain basket rests flat on the support ring (2).



## 5. ADD GRAINS AND STIR

Once your water reaches the set temperature, slowly add the grain to the grain basket, stirring well to avoid any dry clumps.

**NOTE:** The G40 does not require a top plate or an overflow pipe in the basket. The grain basket now has extra drainage holes, removing the need for these parts. You can choose to use a top plate when brewing higher ABV beers if you will be maximising the amount of grain used in the G40. In this case, the top plate can help to keep grain in the basket if the wort levels are too high and stops any wort from draining through the lifting bar holes on the side of the basket. An additional grain plate can be purchased on the online Grainfather Store or at your local retailer.

The maximum grain weight that the G40 basket can hold is 13kg. However, this is affected by grain crush, type and variety, and it may be easier to manage this by using an additional grain plate on top of the mash. If you're unsure how well your particular grain bill will fit then we recommend mashing up to 12kg.

#### 6. INSTALL THE RECIRCULATION HOSE

Ensure that the hose is securely attached to the recirculation barb (13) and insert the barb into the recirculation opening on the side of the G40 body. Rest the other end of the hose on the top of the grain.



#### 7. RECIRCULATE YOUR MASH (WORT)

Ensure that the ball valve (11) on the top of the recirculation pipe (11) is open. Then, to begin recirculating, press the 'pump' button on the controller or via the Grainfather App. If recirculation doesn't start, press the 'pump' button to turn it off, blow into the hose to clear the airlock, then restart the pump.

**TIP:** To save time, we recommend preparing your sparge water during your mash.

#### 8. LIFTING THE GRAIN BASKET

When the mash has finished, turn off the pump and remove the recirculation hose. Close the ball valve on the recirculation pipe and insert the lifting bar (12) into the holes inside the grain basket. Lift the grain basket and then turn it 45° so that the feet at the bottom rest on the basket support ring (2).

**CAUTION**

A two person or mechanical lift is recommended when using larger grain bills on this system. A single person lift may lead to serious injury.



#### 9. SPARGING AND BASKET REMOVAL

Allow the mash liquid to drain into the boiler. Then, gently pour the sparge water evenly over the grain until the water is a few millimetres above the grain and allow to drain.

**TIP:** To save time, you can now start to increase the temperature in preparation for the boil.

## CAUTION

**BE VERY CAREFUL** not to twist the basket while it's in the sparge position as it could knock it off the support ring. If the sparge is stuck and not draining, then remove the top grain plate (if applicable), lower the basket and slice the grain bed with a stainless steel paddle or similar. Cut through the stuck grain from the centre towards the outside repeatedly until it loosens. Then, return the basket to the sparge position and replace the top grain plate (if applicable) to continue sparging.

Always ensure that the support ring fits tightly into its groove and is held in place by the support ring retainer (3). If you remove the support ring for cleaning, ensure that it is correctly reinstalled along with the support ring retainer.



Once the sparge has finished, refit the lifting bar to the grain basket to lift and remove the basket from the boiler.

**NOTE:** If you are using a large grain bill, we recommend scooping some of the grain from the basket to reduce the weight before lifting.

### 10. BOIL YOUR WORT

After removing the grain basket, complete the boil and add the hop additions required by your recipe.

## CAUTION

During the boil, do not fit the glass lid as you may cause a boil over.

# COOLING WITH THE COUNTERFLOW WORT CHILLER

The **G40** includes a counterflow wort chiller (16). This has been designed to efficiently cool your wort, and allow easy, and sanitary transfer directly into a fermenter.

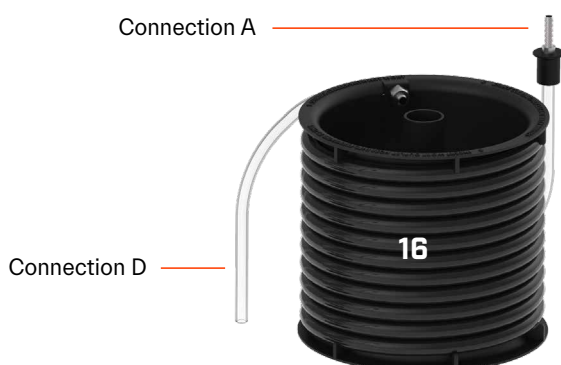
## CLEANING

Before your first use, run cleaner through the counterflow wort chiller. For detailed instructions on how to clean your counterflow wort chiller, please refer to the CIP (Cleaning in Place) section on page 14. Also, ensure that your fermenter is clean and sanitised before cooling and transferring your wort.

## FLOW RATES

The maximum flow rate of water through the counterflow wort chiller is 6L (1.6 US Gal) per minute. Do not exceed this flow rate as it may cause damage to the product.

The maximum flow rate of wort through the counterflow wort chiller is 4L (1 US Gal)/min. At this flow rate, with a tap water temperature of 20°C (68°F), the wort in the fermenter should be at approximately 25°C (77°F). You can get the wort in your fermenter close to 3°C (37°F) above your tap water temperature but reducing the flow of the wort through the counterflow wort chiller and adjusting the 1/2" ball valve (11).



**1.** At the end of the boil turn the heating element off. Create a whirlpool by stirring the wort vigorously with your paddle.

**NOTE:** A moderate whirlpool may automatically form due to the force of the pump.

**2.** Place the counterflow wort chiller on a table or bench and push fit the hose barb on the end of connection A into the recirculation opening on the inside of the **G40** body.

**NOTE:** Ensure that none of your wort or water tubes are sitting underneath the counterflow wort chiller. The water tubes should be coming out from the top. If a tube is squashed or there is a kink, this will cause a pressure build up and liquid will not be able to pass through.

**3.** The coloured hoses are where the cold water enters and hot water exits. To allow cold water to enter, attach the blue hose to your tap, using your tap adapter set (18). The red hose is where the hot water drains out as it flows through the counterflow wort chiller. Connection D is where your wort exits the counterflow wort chiller.

**TIP:** Collect some of the hot water from the red hose to use as cleaning water after your wort has finished transferring.

**4.** To sanitise the counterflow wort chiller place connection D into the **G40** body. Turn the pump on to recirculate the wort back into the **G40** to sanitise the inside of the coil. Complete this step without the cold water circulating. Recirculate for approximately 1–2 minutes.

**NOTE:** The **G40** is designed to cool while simultaneously transferring your wort to your fermenter. You should not cool by recirculating into your **G40** as this reduces the thermal efficiency.

**5.** Turn the cooling water on. Once connection D runs cool, switch the pump off and place the end of the hose inside your clean and sanitised fermenter. Always try to keep the fermenter opening covered to avoid contamination while transferring your wort.

**NOTE:** Take an OG (original gravity) reading of your cooled wort before adding yeast as per the correct yeast pitching temperature within your recipe. Fit a bung and airlock to the top of your fermenter to keep it safe from contaminants that may spoil your brew.

# ADVICE FOR CLEANING & STORAGE

No one really enjoys cleaning, but it's worth it for great beer!

- After use, the G40 and all of its components should be cleaned immediately and dried thoroughly. We recommend using the Grainfather High Performance Cleaner as it removes the need for tedious scrubbing. However, all stainless steel components can be cleaned using a conventional, unscented brewing detergent/cleaner.
- Abrasive agents and sponges/brushes could cause scratching and are not suitable for use. Ideally, use a dish brush or soft sponge to clean the unit.
- Do not store in a damp area as this could cause damage to the product.
- Once you have cleaned your equipment, dry, reassemble and store.

## CLEANING IN PLACE (CIP)

1. Remove all trub and solids from the G40 by removing the hop filter from the G40, rinse thoroughly and then put aside. Remove the hex nut (17) from the T-section of the recirculation pipework and flush the rest of the trub and other remains from the G40. You can now re-attach the hex nut.
2. Fill the unit with 15L (3.9 US Gal) of water and 1 cap of Grainfather High Performance Cleaner.
3. Heat the water to 60°C (140°F) and use a dish brush or soft sponge to clean the unit.
4. Attach the counterflow wort chiller and place the connection D hose from the chiller into a 5L (1.3 US Gal) jug. Once ready, switch the pump on and let the water run into the jug until the water clears. Now, place the hose into the unit so the water continues to recirculate and leave for 10–15 minutes.

5. Once complete, switch the heating and pump off, and remove the hex nut to allow the unit to drain.

6. Once draining has finished, follow steps 2–5 again but this time with clean water to rinse and flush the G40 and counterflow wort chiller.

## CAUTION: RISK OF BURNS

Use heat resistant brewing gloves or other suitable gloves during this process.

**NOTE:** You can choose to add an additional ball valve tap to make the cleaning process even easier. Please see the next page for more information.

## PUMP CLEANING

We recommend cleaning your pump every 5–10 brew sessions. This process should be done after you've cleaned your G40.

1. Turn the unit upside down and remove the four screws on the base of your G40.
2. Using pliers, squeeze and shift the hose clamps away from the pump inlet and outlet.
3. Remove the four screws that hold the pump in place and detach the inlet, and outlet hoses from the pump.
4. Remove the screws holding the impeller housing to the pump.
5. Remove the top cover of the impeller housing exposing the impeller.

**NOTE:** There is no need to expose the magnetic drive pump.

6. Use a pipe brush or something similar to clean the impeller and impeller housing.

**NOTE:** Do not submerge the pump in water.

7. Dry the components and reassemble the unit.

# UPGRADE YOUR **G40**

Get the most out of your **G40** Brewing System with these optional upgrades.

## ADDING A BALL VALVE TAP TO YOUR UNIT

A ball valve tap can be added to the **G40** to allow quick drainage from the bottom of the unit. The tap accessory can be purchased on the online Grainfather Store or at your local retailer.

## HOW TO INSTALL THE BALL VALVE TAP

1. Remove the hex nut from the T-section of the recirculation pipework.
2. Transfer the o-ring from the hex nut to the tap.
3. Install the ball valve tap onto the T-section.



## NZ/AU ONLY: UPGRADE FROM 10 AMP TO 15 AMP

### CAUTION

To upgrade your **G40** to 15 amp mode, a 15 amp power socket must be professionally installed.

Do not plug a 10 amp cable into a 15 amp socket as this is a serious fire hazard. Also, running 15 amp mode with a 10 amp cable and socket will trip ELCB.

## HOW TO UPGRADE YOUR UNIT TO 15 AMP MODE

1. Purchase the NZ/AU 15 amp power cable accessory from the online Grainfather Store or at your local retailer.
2. Plug the 15 amp power cable into the base at the back of your **G40**.
3. To change into 15 amp mode, use your **G40** controller, go into 'settings' from the main menu and hold the 'heat' button for 10 seconds.
4. A pop-up warning will show. Click 'set' to proceed and your unit is now in 15 amp mode.
5. To return to 10 amp mode, simply hold the 'heat' button for 10 seconds and a pop-up warning will show. Click 'set' to return to 10 amp mode.

# IMPORTANT 😊 SAFEGUARDS

## READ AND FOLLOW ALL INSTRUCTIONS

- CAUTION**
- Risk of fires and electric shock.
  - Replace only with genuine Grainfather cord set, part No. SJTO.
  - Do not immerse in water.

## SAVE ALL WARNINGS AND INSTRUCTIONS FOR FUTURE REFERENCE

## FOR COMMERCIAL AND INDOOR USE ONLY



SCAN AND  
EXPLORE THE **FREE**  
GRAINFATHER APP



**RESOURCES:** Check out our YouTube Channel for helpful videos. For more information, visit our Help Centre: [help.grainfather.com](https://help.grainfather.com)

**GET IN TOUCH ONLINE:** [help.grainfather.com/hc/en-us/requests/new](https://help.grainfather.com/hc/en-us/requests/new)

