

**ALUMINIUM WINDOW LOCK SPEC SHEET**



**IMPORTANT NOTES**

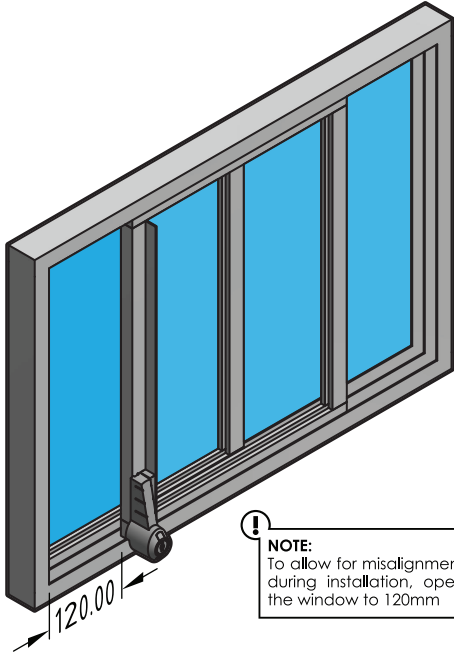
To comply with the regulations & provide adequate security, the lock must:

- Be installed on a sliding aluminium window
- Be checked frequently to ensure the screw is tightly secured
- Be installed at the correct distance to restrict the window opening (per the excerpt of regulations)
- Have the key removed at all times and placed out of reach of children.

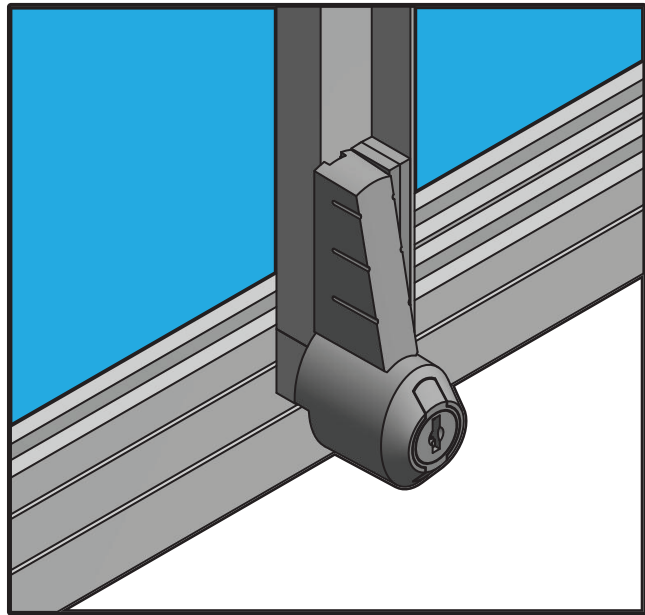
**BCA REGULATIONS EXCERPT**

**D2.24 Protection Of Openable Windows**

The openable portion of the window must be protected with a device to restrict the window opening. The device or screen must not permit a 125 mm sphere to pass through the window opening and resist an outward horizontal action of 250 N against the window restrained by the device.



**NOTE:**  
To allow for misalignment during installation, open the window to 120mm

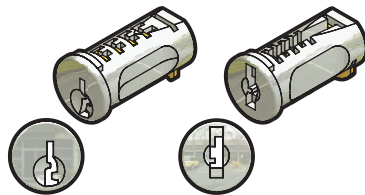


**SUITABLE FOR**

- Aluminium Windows
- Front Mount Fixing
- Side Mount Fixing

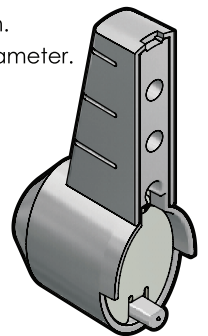
**MULTIPLE BARRELS**

The Carbine Multi Bolt utilizes 2 different types of barrels. Our patented C4 wafer barrel allowing the use of C4 Keys & LF wafer barrel allowing the use of LF43R & LF6R keys.



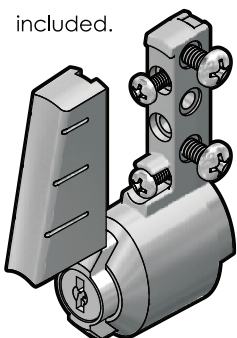
**HIGH QUALITY INTERNAL MECH**

High quality metal internal snap shut mechanism. Ø6mm locking pin diameter.



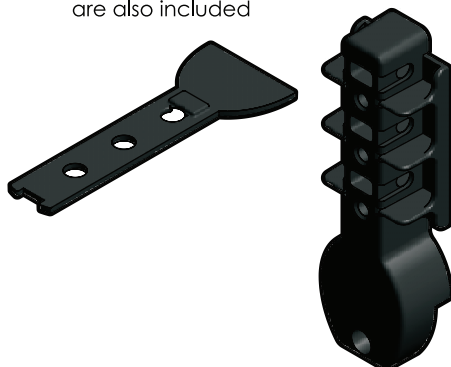
**FRONT FIXING & SIDE FIXING**

Front fixing screws are concealed with a colour matched plastic cover. Side mount fixtures are also included.



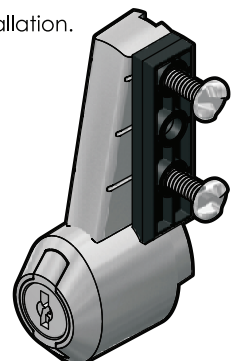
**DRILLING TEMPLATE**

A front mount & side mount drilling template is available. Bottom packers are also included



**MULTIPLE SCREWS SUPPLIED**

One way and cross headed self tapping screws supplied. A side mount packer is supplied for a flush side mount installation.



**ALUMINIUM WINDOW LOCK BASIC DIMENSIONS**