

 Konfurb



Konfurb Orbit.
Swivel Pedestal.

buroseating.com

Konfurb by
buro
ergonomics at work®

Konfurb Orbit.

Acclaimed design.

The Konfurb Orbit chair is designed by internationally acclaimed architect and designer, Mac Stopa. The chair is characterised by a sleek and minimalist design, with a dominant 'wing' style that seamlessly complements various spaces including; relaxation spaces, reception areas and comfortable and informal workplace meeting spaces.

Harmonise the black powder-coated pedestal base with your choice of Charcoal fabric or Black PU upholstery. For a personalised touch, opt for custom upholstery that complements your interiors.

Key Features & Benefits.

Pedestal High Back KON181
Pedestal Mid Back KON185



HIGH BACK
Black PU

MID BACK
Charcoal

COLOUR HARMONY

Choose from 2 upholstery options or opt for custom upholstery.

STRONG METAL FRAME

Lightweight, durable & sustainable metal frame construction.



SWIVEL PEDESTAL BASE

in black powdercoated aluminium.

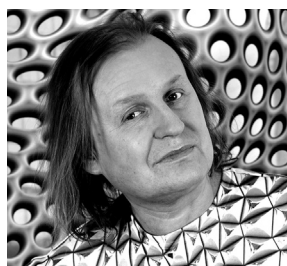


International Standards & Awards.

The Konfurb Orbit Pedestal chair is supported by the following internationally recognised standard:

- Tested to **ANSI/BIFMA X5.1-2017** General-Purpose Office Chairs

Designer.



Mac Stopa, award-winning architect and designer whose work spans several design disciplines. Designer of the Konfurb Orbit.

Features.

- Moulded foam on metal frame construction
- Black powdercoated aluminium swivel pedestal base
- No assembly required

Specifications. (mm)

High Back

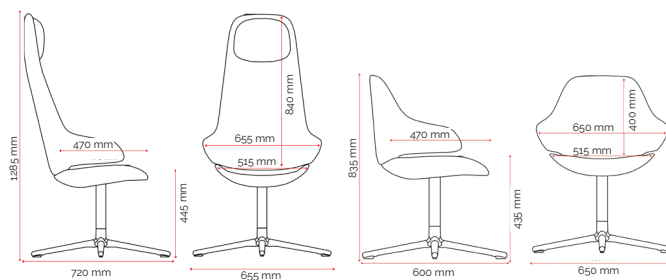
Overall	655w / 720d / 1285h
Back	655w / 840h
Seat	515w / 470d
Seat Height	445h
Arm Height	615h

Mid Back

Overall	650w / 600d / 835h
Back	650w / 400h
Seat	515w / 470d
Seat Height	435h
Arm Height	610h

Colours.

Fabric	PU	Custom ²
Charcoal 2	Black V3	Custom Upholstery Available



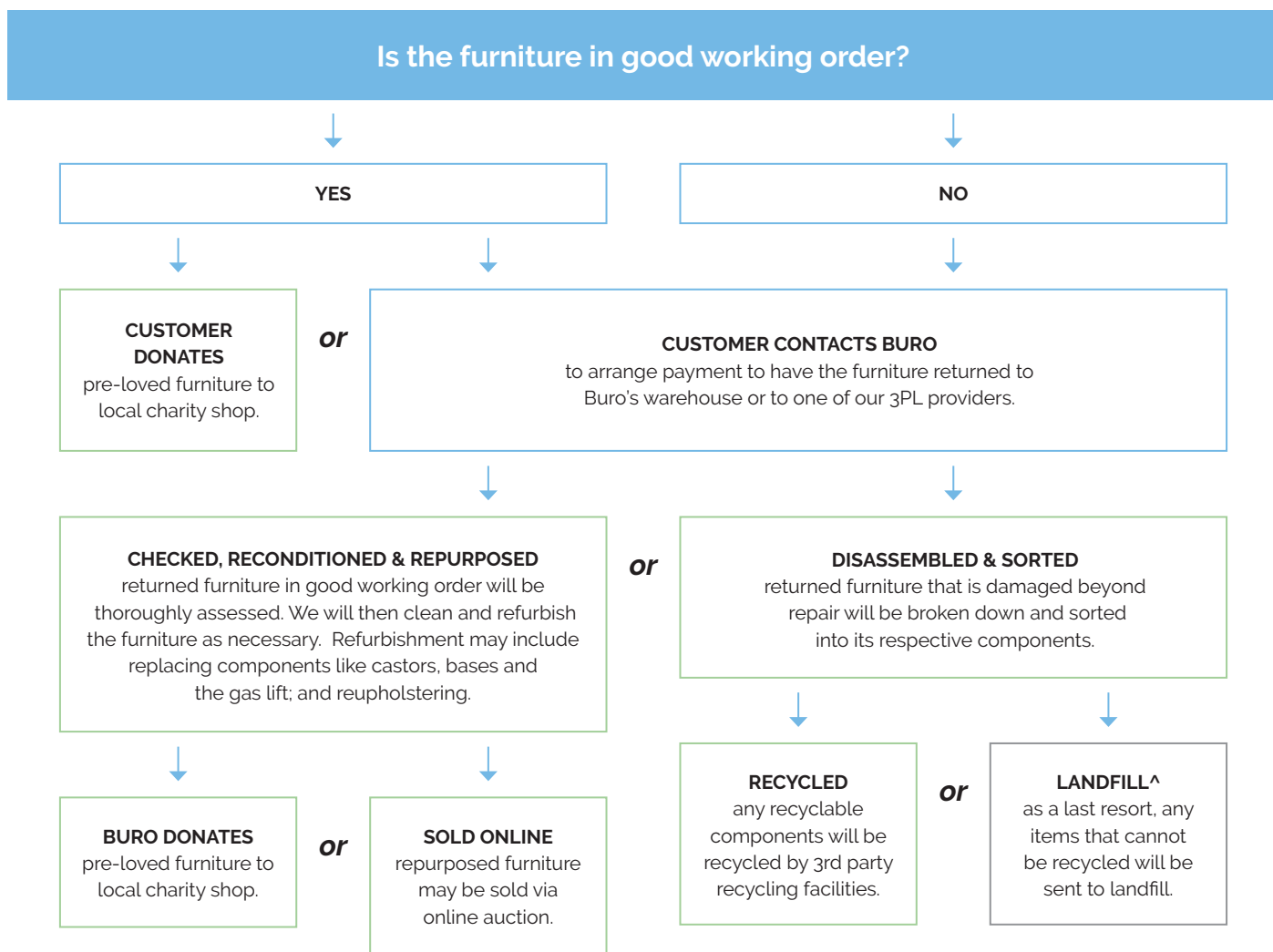
Quality Assurance and Accreditations.



¹ 5 Yr Guarantee: Excludes upholstery. Guarantee conditions apply, please see buroseating.com. ² 4-way stretch fabric required. MOQ's and extended lead times apply, please see buroseating.com for definitions & conditions. **General:** In the interests of product development, Buro reserves the right to alter product specifications & features without notice.

Buro Product Stewardship Programme.

We encourage repurposing and recycling of pre-loved office furniture to reduce our impact on the environment. When a customer has Buro furniture* that they wish to dispose of, we apply the following steps to determine the most appropriate method.



To mitigate our CO2 footprint over the next 50 years, we're working with **Trees That Count**, a conservation charity dedicated to planting native trees.

By funding the planting of native trees, we're supporting efforts to increase biodiversity across New Zealand.

Buro proudly support **Greening Australia**.

Greening Australia has been restoring Australia's unique landscapes and protecting biodiversity at scale through collaborative, science-based programs for over 40 years.
www.greeningaustralia.org.au

As a **Sedex member** we are committed to being a responsible business, sourcing responsibly, and improving ethical standards and working conditions within the supply chain.

*Qualifying furniture must be Buro branded product (Buro Seating, Konfurb, Mondo), or a partner exclusive brand.
^Many of our products are GREENGUARD certified for safe emission levels. This reduces the environmental impact when sending any components to landfill.