

Cubit Credenza

Assembly Instructions

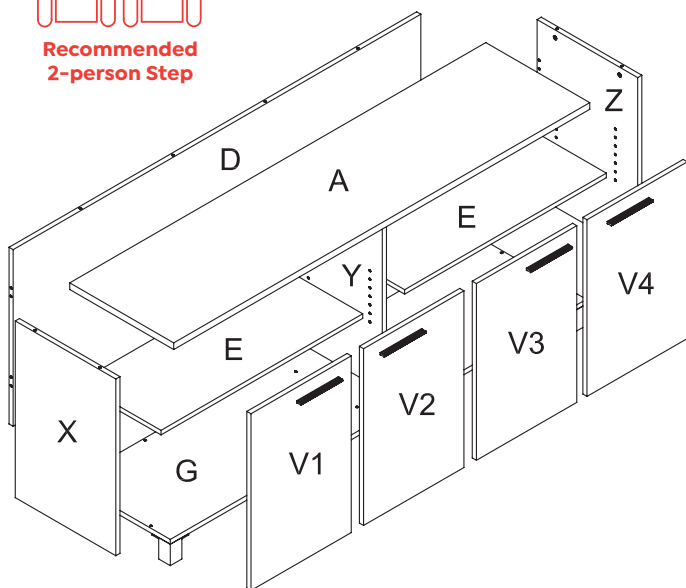
Tools Required: Powered Screwdriver



Cubit Credenza

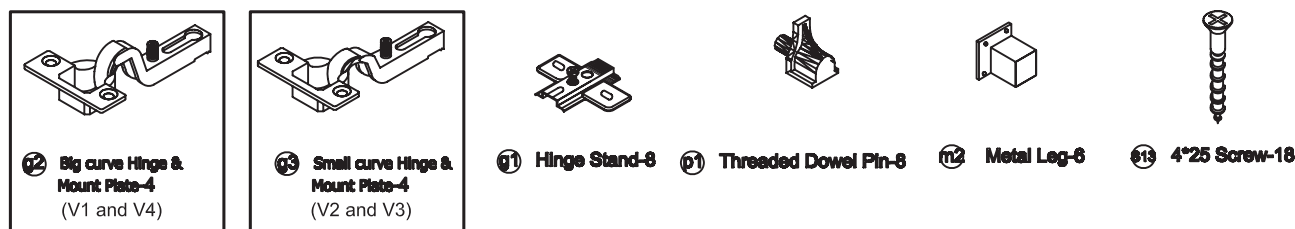
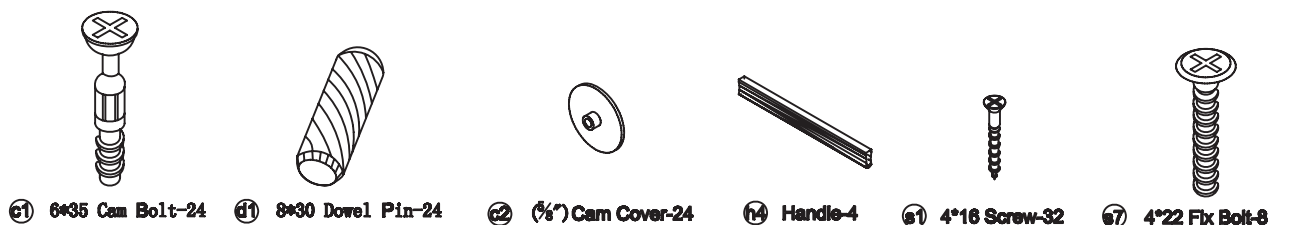
Assembly Instructions

- To prevent possible scratches or damage, assemble the credenza on a soft surface such as a blanket, carpet or packaging.



PARTS LIST

Item	Description	Quantity	Item	Description	Quantity
A	Top Panel	1	c1	6x35 Cam Bolt	24
X	Left side panel	1	d1	8x30 Dowel Pin	24
Z	Right side panel	1	c2	(5/8") Cam Cover	24
D	Back panel	1	h4	Handle	4
G	Bottom panel	1	s7	4x22 Fix Bolt	8
E	Moveable shelf	2	s1	4x16 Screw	32
V1	Door panel	1	g2	Big curve Hinge & Mount Plate	4
V2	Door panel	1	g3	Small curve hinge & Mount Plate	4
V3	Door panel	1	g1	Hinge Stand	8
V4	Door panel	1	p1	Threaded Dowel Pin	8
Y	Vertical panel	1	s13	4x25 Screw	18
			m2	Metal Leg	6



Pre-installed parts

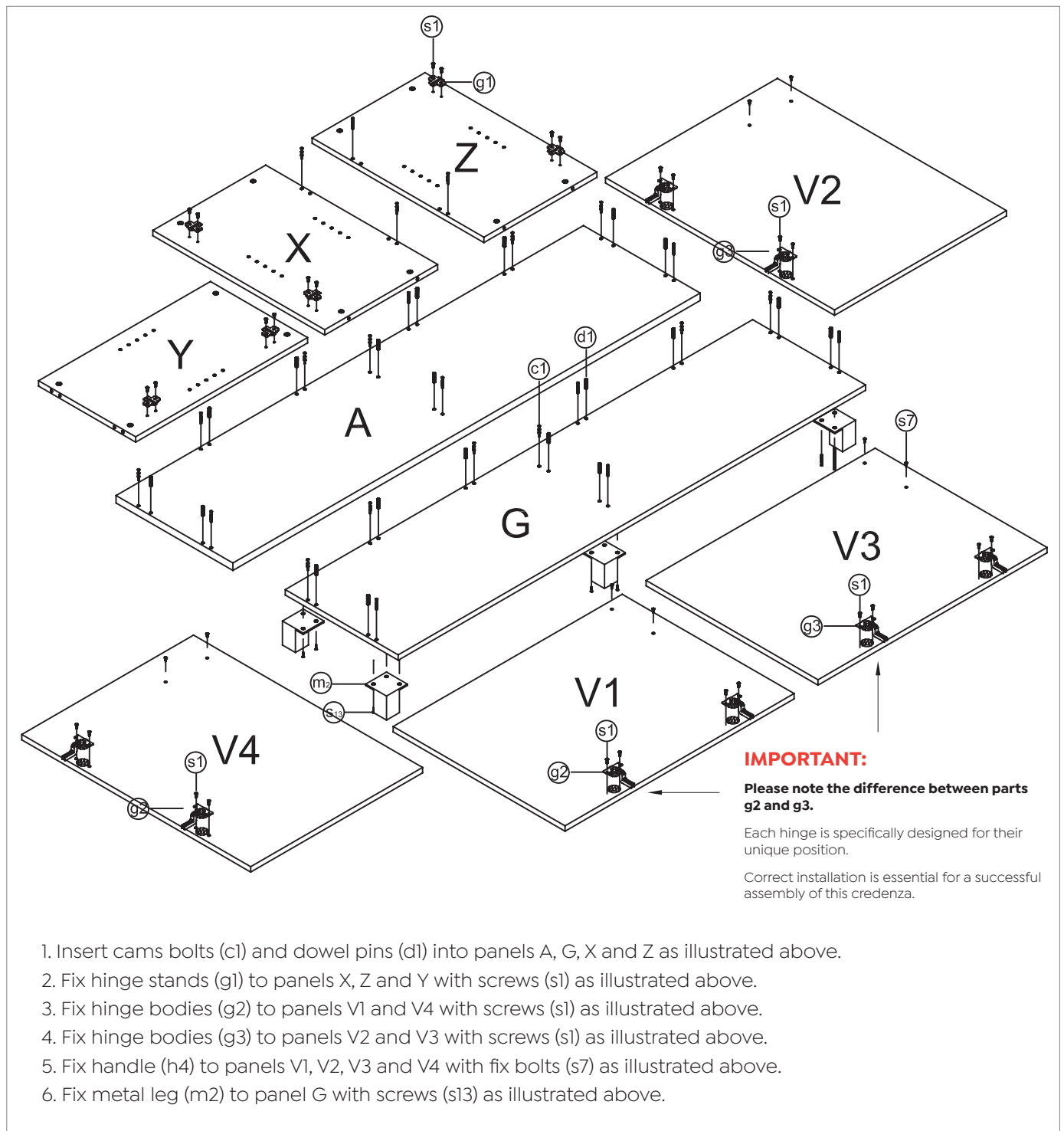
IMPORTANT:

Please note the difference between parts g2 and g3.
Each hinge is specifically designed for their unique position.
Correct installation is essential for a successful assembly of this credenza.



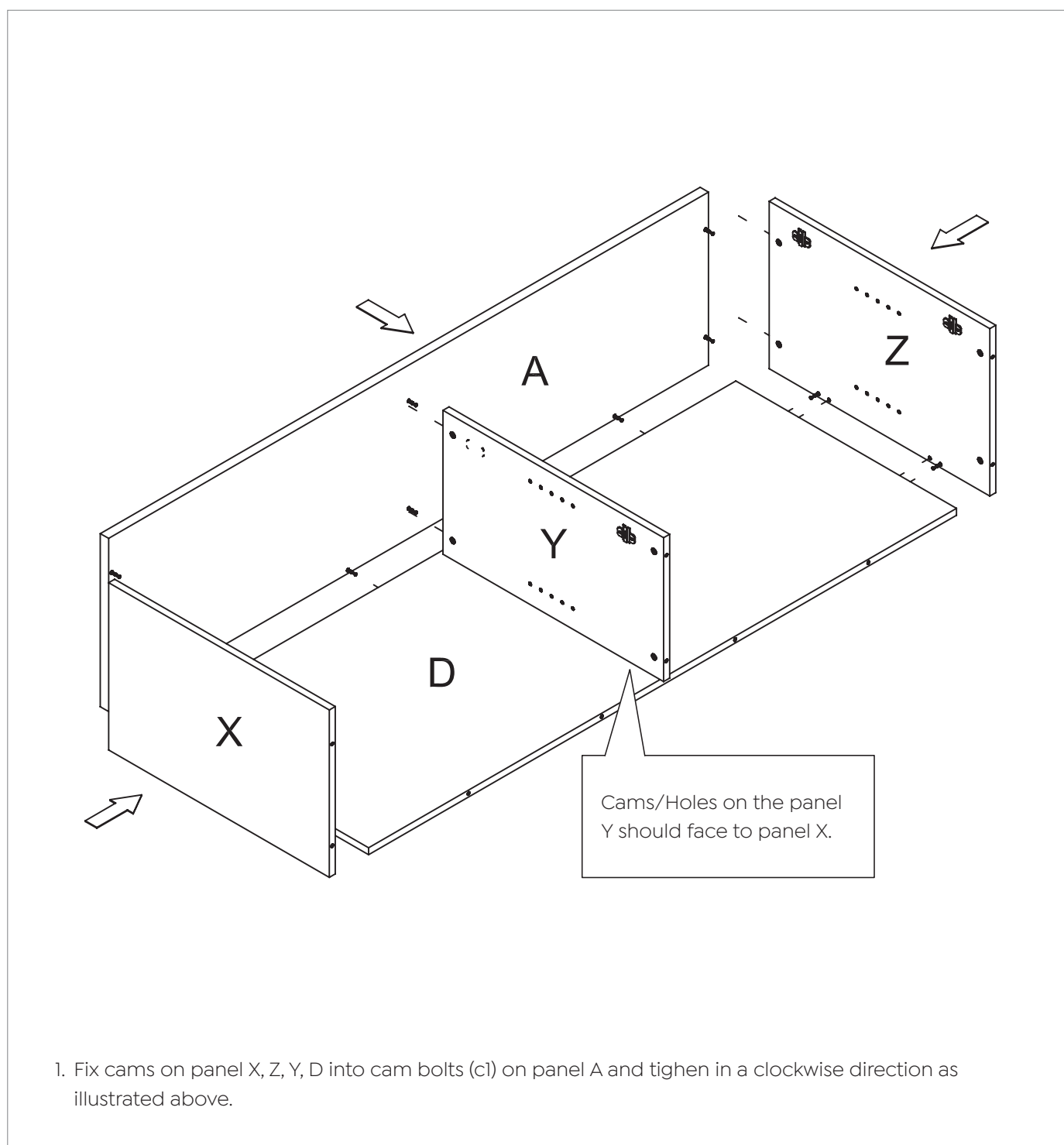
Step 1

Preparation for top panel A, bottom panel G, left side panel X, right side panel Z, vertical panel Y, door panel V1, V2, V3 & V4.



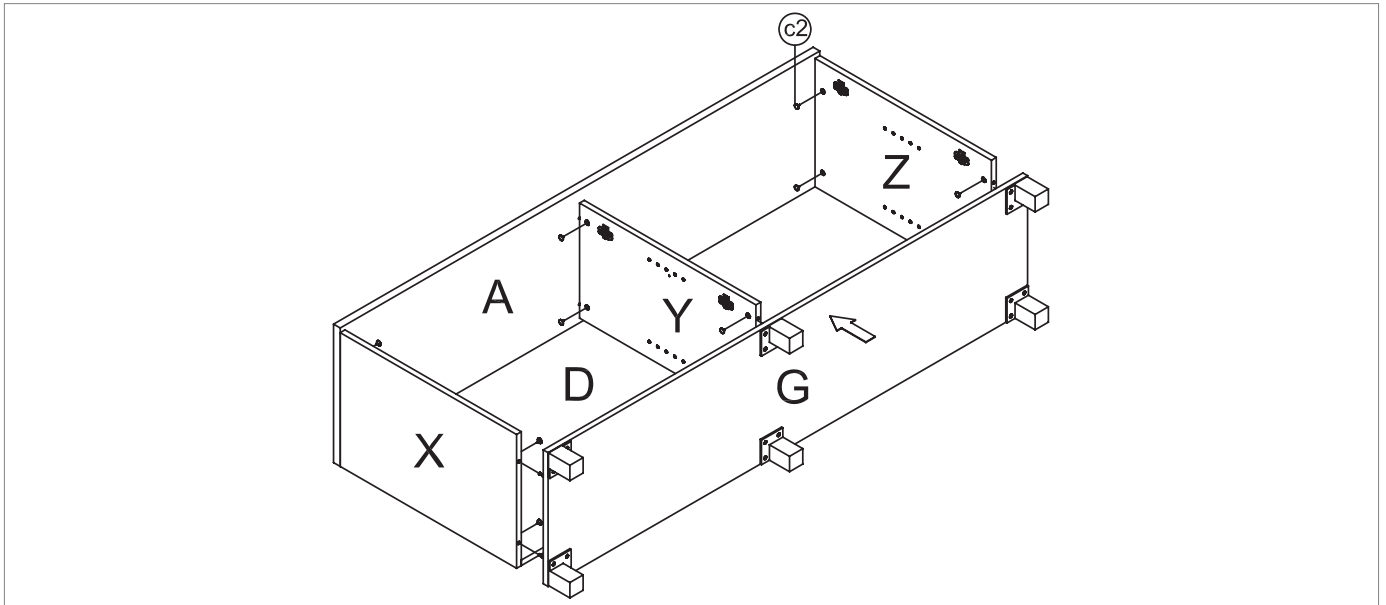
Step 2

Top panel A, back panel D, left side panel X, right side panel Z, vertical panel Y assembly.



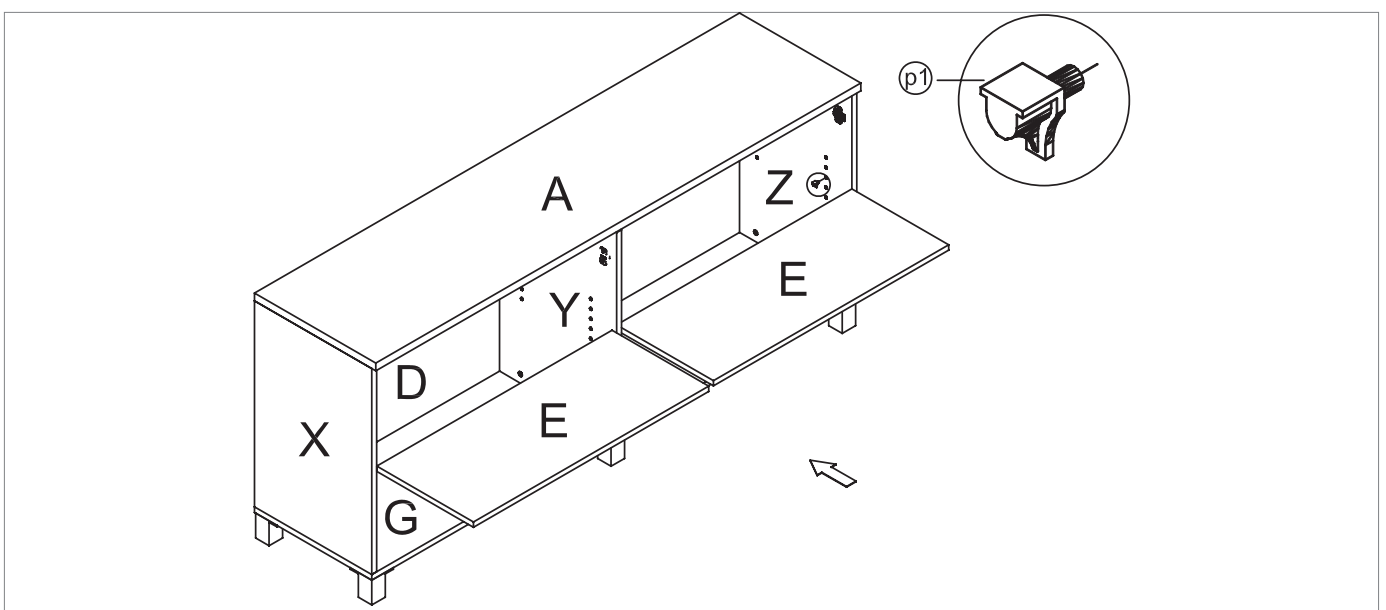
Step 3

Fix cams on panel X, Y, Z and D into cam bolts (c1) on panel G and tighten in a clockwise direction as illustrated above. Cover the cam covers (c2) on the top of all the cams.



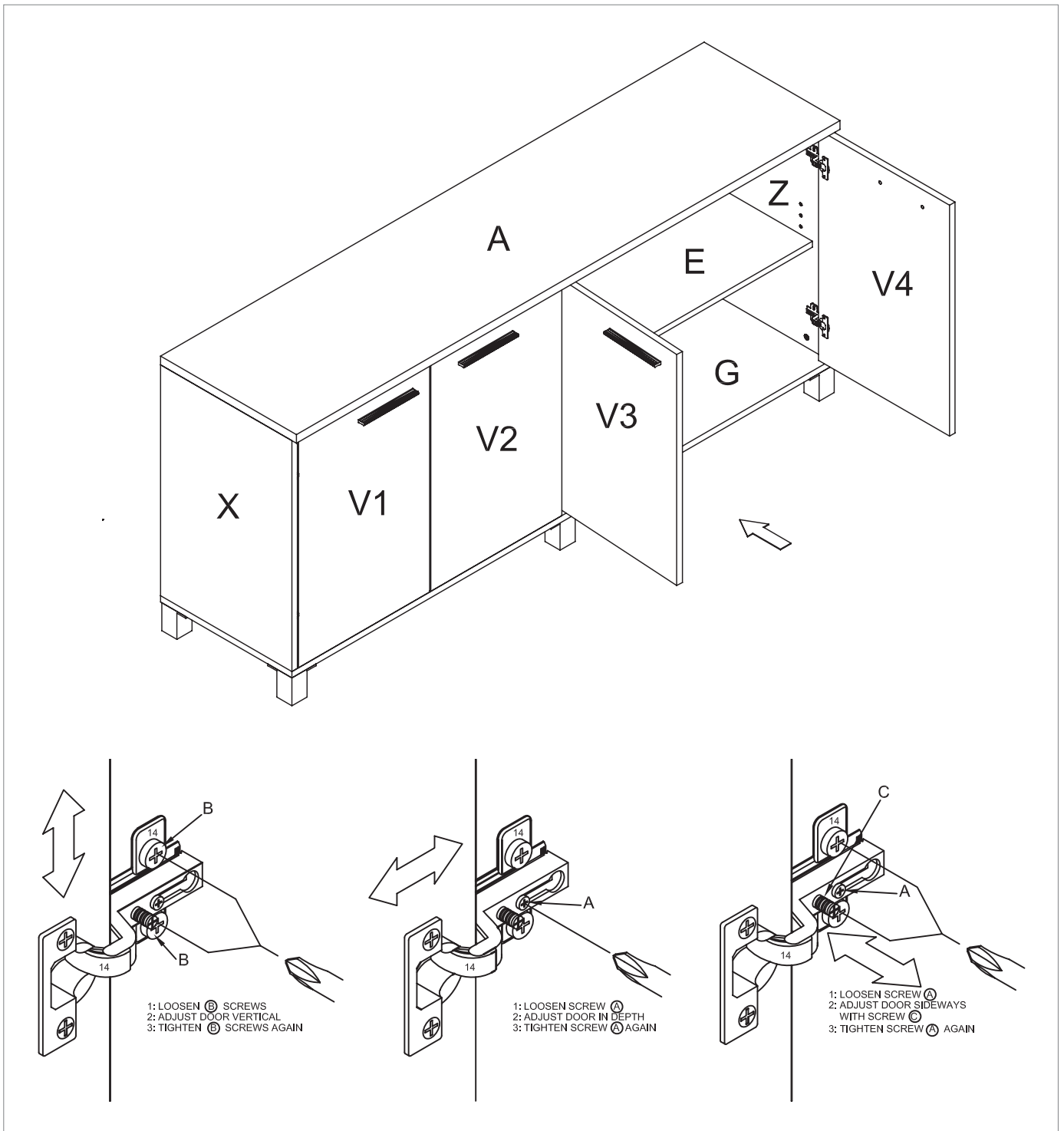
Step 4

Insert threaded dowel pins (p1) in to panels X, Z and Y as illustrated above. Put the two panels E on the top of threaded dowel pins (p1) as illustrated above.



Step 5

Door panel V1, V2, V3 and V4 assembly.



Complete

