



**WILDCAT XX & TRACKER XTR1000 DUAL TITANIUM EXHAUST
INSTALLATION MANUAL**

Contents

Tools needed:..... 2

Remove stock exhaust 3

Install Speed exhaust 4

Speed Wildcat XX & Tracker XTR1000 Dual Titanium Exhaust

Tools needed:

Sockets [mm]: 13, 15

Wrenches [mm]: 10

Torx: T30

Allen [mm]: 6

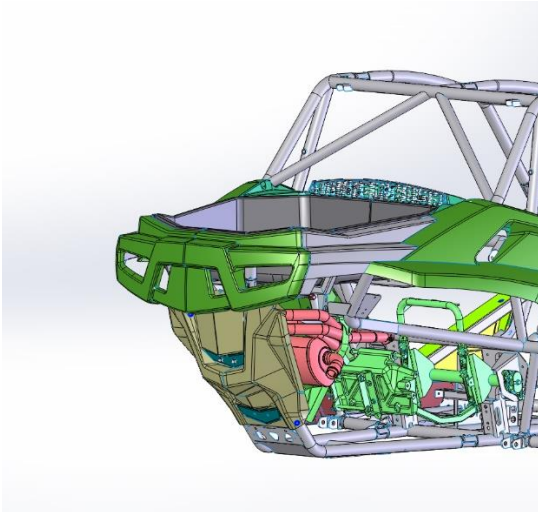
Other: Phillips head screwdriver, pliers

Please call Robby Gordon Motorsports if you have any questions/concerns at 704-949-1255

Remove stock exhaust

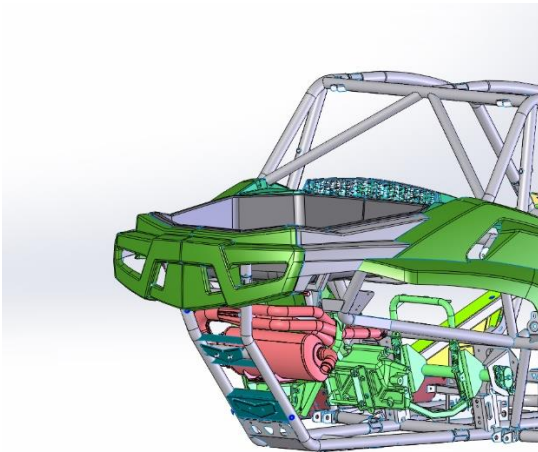
1. Remove bed from vehicle.
2. Remove rear body panel (brown).

Tool: T30



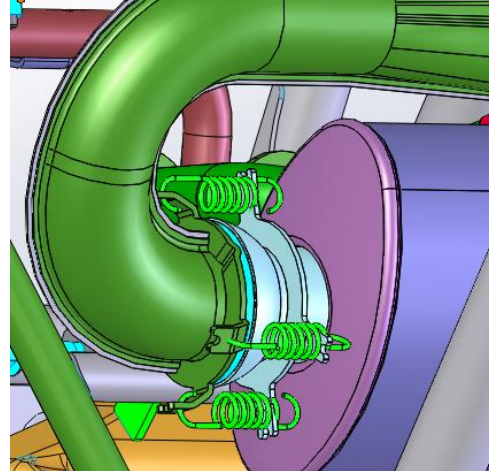
3. Remove heat shielding that was behind rear body panel.

Tool: T30



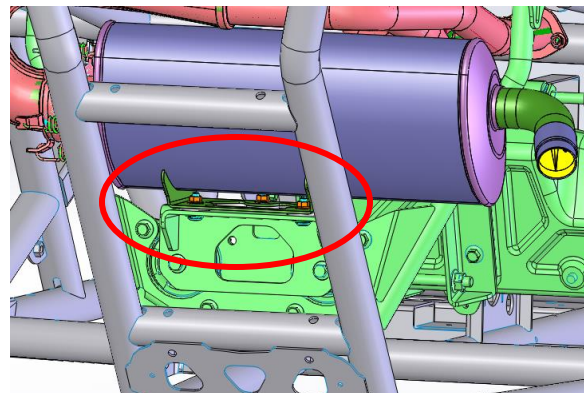
4. Remove the four springs connecting the stock exhaust to the collector.

Tool: pliers

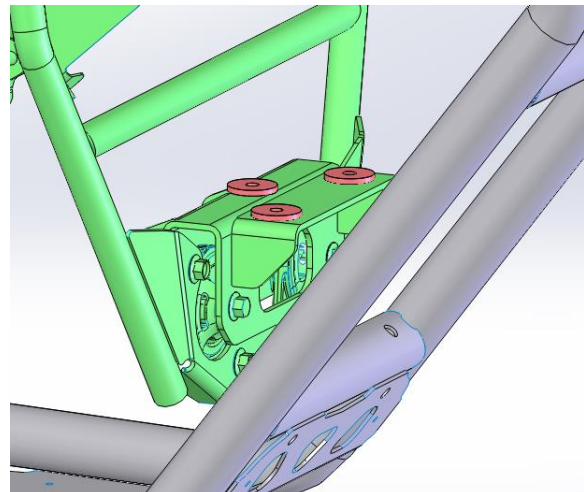


5. Remove the three exhaust mount bolts. The bolt closer to the engine does not need to be completely removed but must be loosened enough to slide out of the slot and toward the engine.

Tool: 10mm wrench, 13mm socket



6. Remove rubber isolators that were under exhaust bracket from vehicle.



Install Speed exhaust

- Loosen both hose clamps so that exhaust can be removed from the mounting bracket.

Tool: Phillips screwdriver



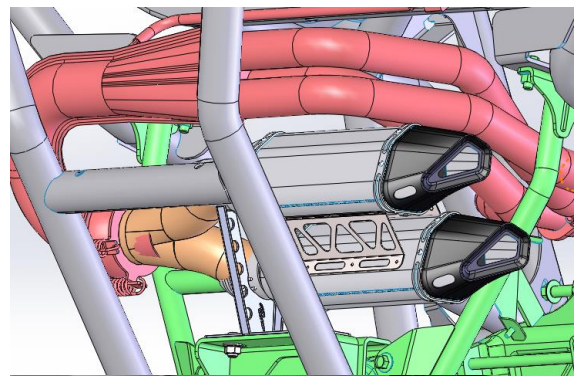
- Remove hardware from exhaust mounting bracket/shims.

Note: There is variation in the location of the exhaust ball flange between vehicles. Due to this the exhaust mount must be shimmed to the proper height and adjusted to make sure exhaust is positioned properly.

- Place mounting bracket and 2 shims on vehicle and tighten bolts hand tight so bracket can still move.

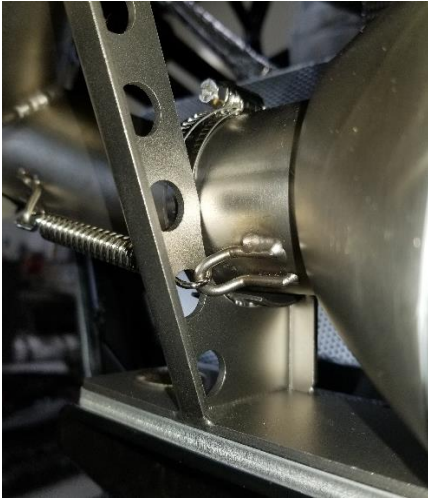


- Place exhaust on mount and fit intake bell to the exhaust ball flange. Make sure to orient it correctly, as shown below.



If the exhaust is sitting too high/low, then add/remove a shim as needed.

Note: The lower spring mount on the exhaust should sit into the groove in the mount. On some vehicles, due to collector the spring mount ends up behind the mount so the spring will have to be removed and then reattached through the mount, as shown below. Remove the spring, but do not reattach it yet though.



- 11.** There is extra clearance between the mounting bolts and the frame holes to allow the mount to be adjusted left-right and front-back. Move the mount until the exhaust is sitting tight into it and there is clearance between the exhaust and the vehicle.



- 12.** Once mount is positioned so the exhaust is sitting correctly, carefully remove the exhaust while keeping the mount in place.
- 13.** Tighten exhaust mount bolts.
Tool: 6mm Allen, 15mm socket
- 14.** Reattach exhaust to mount. Tighten hose clamps around exhaust and mount.
Tool: Phillips screwdriver
- 15.** Attach stock springs between exhaust and exhaust ball flange.
Tool: pliers
- 16.** If the lower exhaust spring had to be removed then reattach it now, as shown before.
- 17.** Install heat shielding that was previously removed. Then install the rear body panel that was removed.
Tool: T30