



---

**Kinduct: Remote Training and Assessment Platform**

# WHO WE ARE

Kinduct enables organizations to connect all of their data sources in one, highly secure, cloud-based platform.

Our configurable platform is used by health organizations, tactical groups, and sporting teams to help monitor, measure, and uncover insights about the people they train and support.

# WHO WE WORK WITH



# PLATFORM OVERVIEW

Kinduct's Remote Training and Assessment Platform aims to extend the practitioner's reach beyond the in-person visit. Through a suite of rich digital tools, it enables remote monitoring, assessment, and programming.



## Key features include:

- CSEP-ready data collection tools to facilitate **pre-participation health screening assessments**
- **Integrations** with wearable technologies
- Powerful **reporting and data visualization** capabilities
- Exercise Library of **8000+ videos** and 3D medical animations to help enrich client programming
- **Mobile app** for administering surveys and programming, and monitoring progress



# DATA COLLECTION

Administer, distribute, and capture meaningful data from your clients with Form Builder.



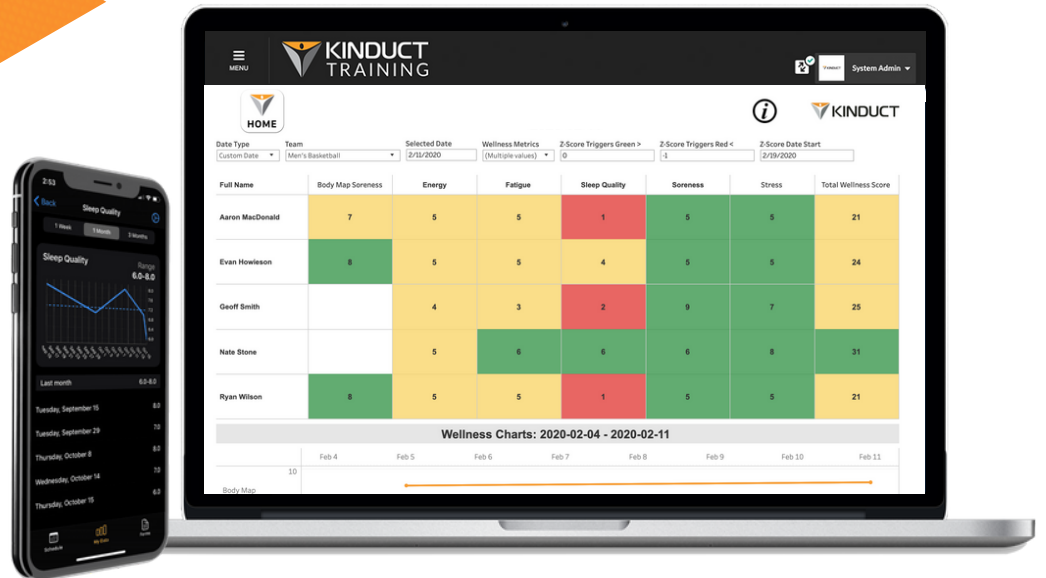
Data that is collected through these functions map directly back to your Kinduct platform, where it is readily formatted and ready to be explored, analyzed, and acted upon.

We also integrate with over 50 3rd-party data sources, meaning data produced from Apple Health or devices such as WHOOP and Polar can be pulled into your platform effortlessly.

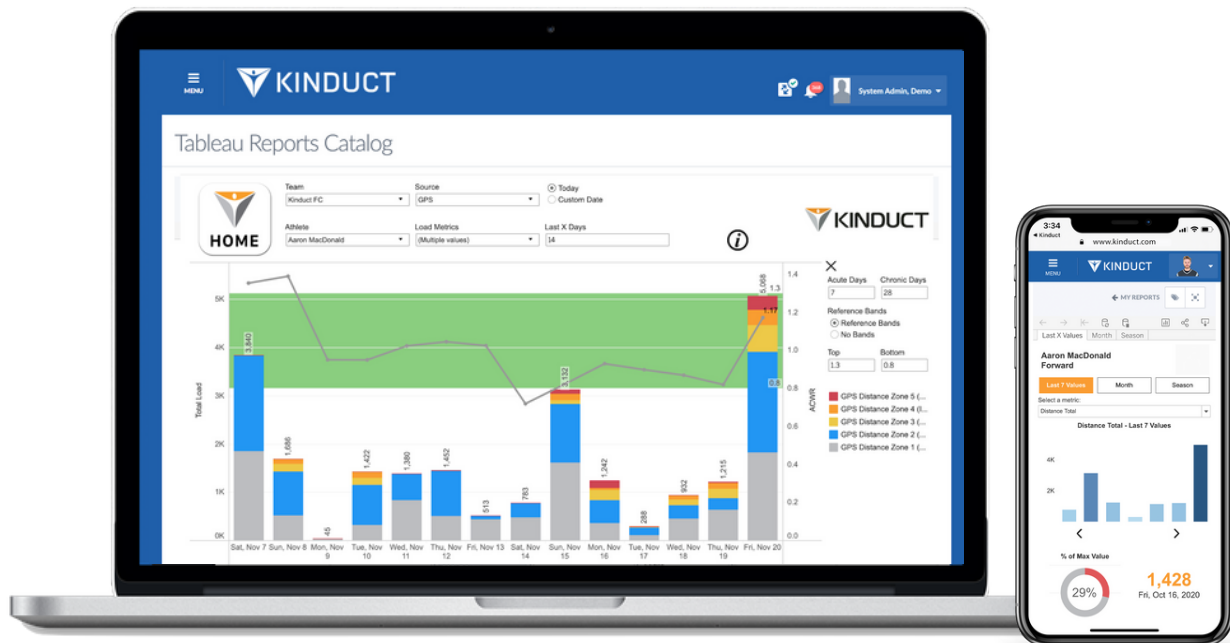
This way, Kinduct frees up time which can be spent working with your clients.



# REPORTING TOOLS



The Kinduct platform enables users to visualize the data they've collected through a variety of pre-built reports as well as custom reporting tools. With these tools, you can easily track client wellness, progress, and adapt programming accordingly.

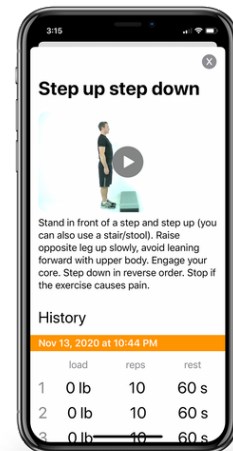
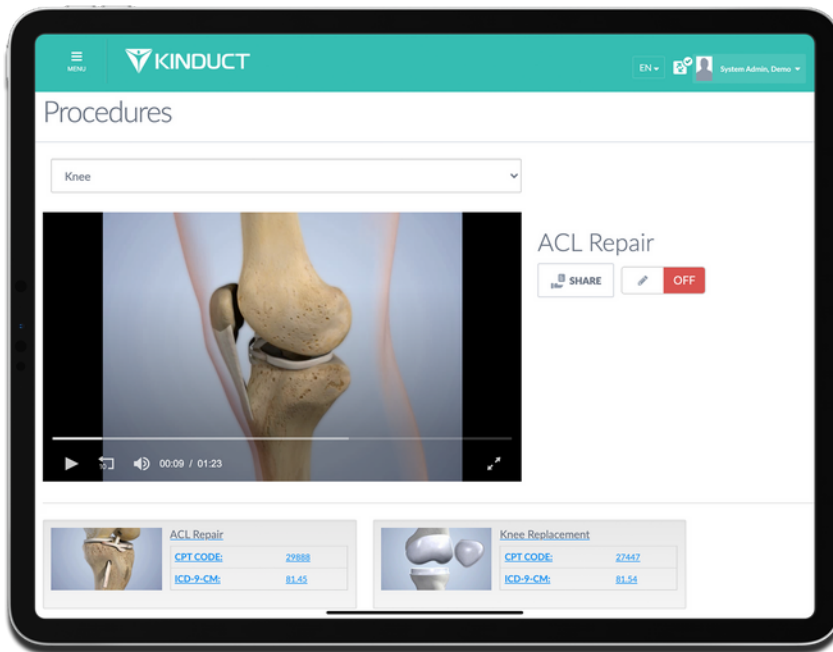




# DIGITAL PROGRAMMING

When it comes to creating and assigning programming for your clients, we offer a Training Program Builder tool as well as an Exercise Library with over 8000 exercise videos, photos, and detailed descriptions.

On top of this, there are also hundreds of 3D medical animations for educating clients on their condition.



Once created, these programs can be delivered directly to your clients through the Kinduct mobile app.



# EMR CAPABILITIES




Log and store your client's injury-related data with Kinduct's EMR tools such as Treatment Log, where you can add detailed notes and documents so all relevant info is available in one, secure location.

These features allows you to easily adjust, track, and comment on the health status and rehabilitation journey of your clients.



# FEATURE LIST

 <b>KINDUCT</b>	Kinduct Lite	Kinduct Pro
Unlimited Forms / Assessments	Limited to two (2)	✓
Advanced Reporting	✓	✓
Exercise Library and Training Program Builder Tool	✓	✓
EMR Features		✓
Covid-19 Screening	✓	✓

Interested in learning more about what Kinduct can do?

- o Visit our website: [www.kinduct.com](http://www.kinduct.com)
- o Schedule a demo: [www.kinduct.com/contact](http://www.kinduct.com/contact)

