



**INSTALLATION INSTRUCTIONS  
NO DRILL LICENSE PLATE MOUNT  
VEHICLES WITH ADAPTIVE CRUISE CONTROL  
& CELL OR WAVY GRILLE DESIGN**

Thank you for choosing to purchase a Carbonio product. Please take the time to fully read over these instructions before attempting to install your mount. This will greatly speed up the installation process and minimize any difficulties you may encounter.

These instructions explain the procedure to install a No Drill License Plate Mount on a particular **style** of front grille. Individual kits are vehicle specific and may contain pieces that differ slightly from the images contained in this manual.

**Tools Required:**

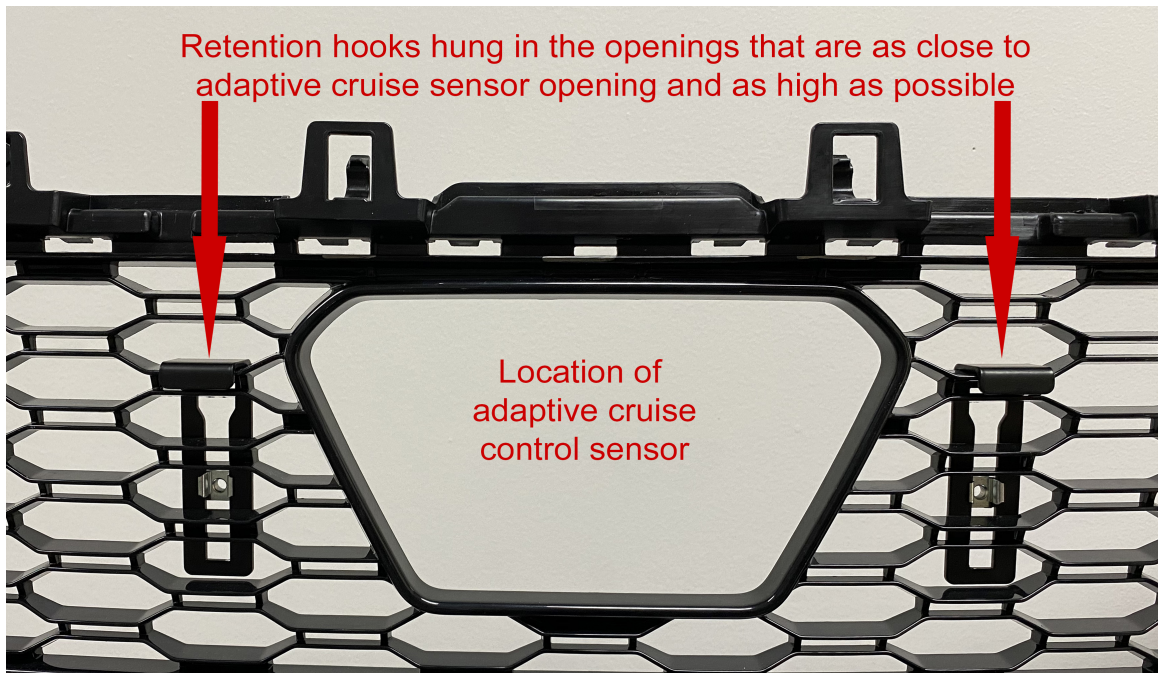
- Phillips (star) head screwdriver (for North American installs)

**Step 1 – Hanging the retention hooks (RH)**

On vehicles with Adaptive Cruise Control (ACC) the retention hooks are passed through the grille openings that are: 1- the closest to the opening on for the ACC sensor and 2 – the highest opening possible.

Pass the long side of the Retention Hook (RH) through the aforementioned grille openings (allowing the top of the hook to grab onto a horizontal grille slat) and then allow the RH to drop behind the grille.

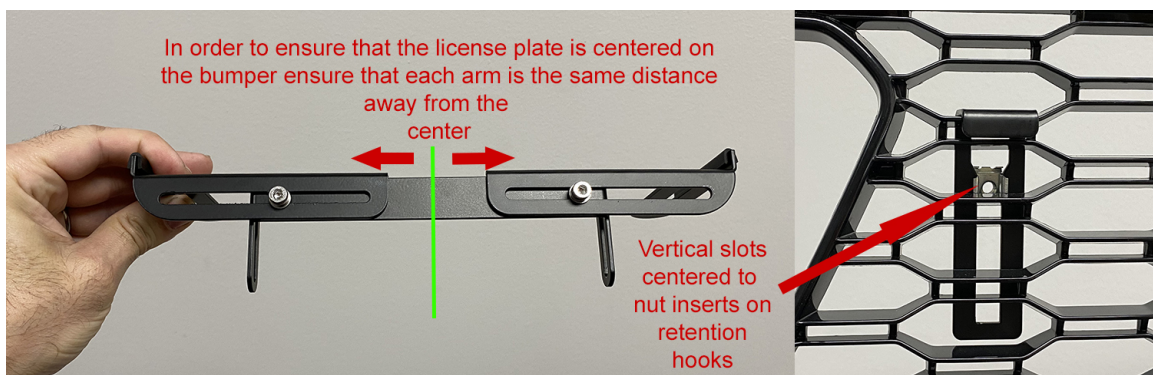
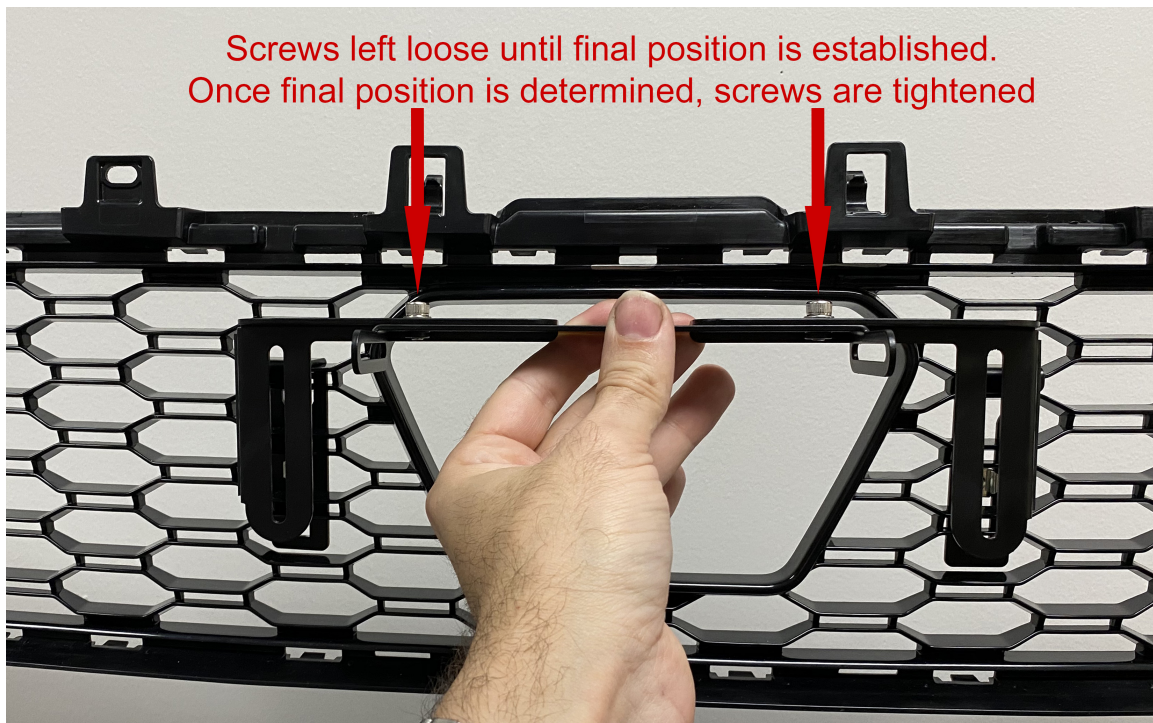
**NOTE: Make sure that the Retention Hook 'hooks' on and does not fall behind the grille**



## Step 2 – Size the grille bracket to the grille

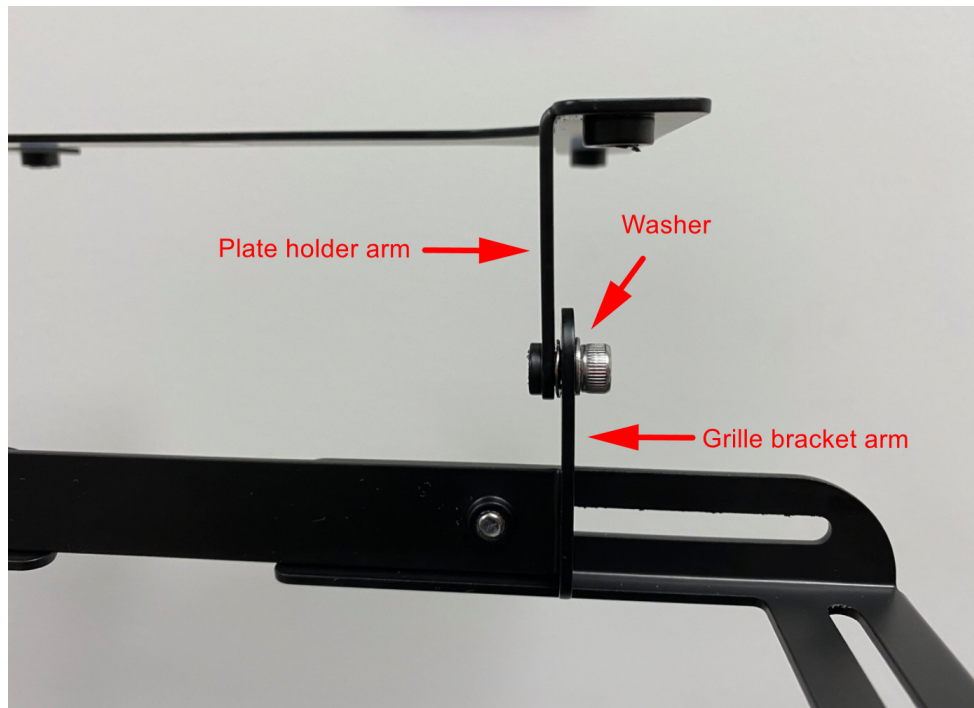
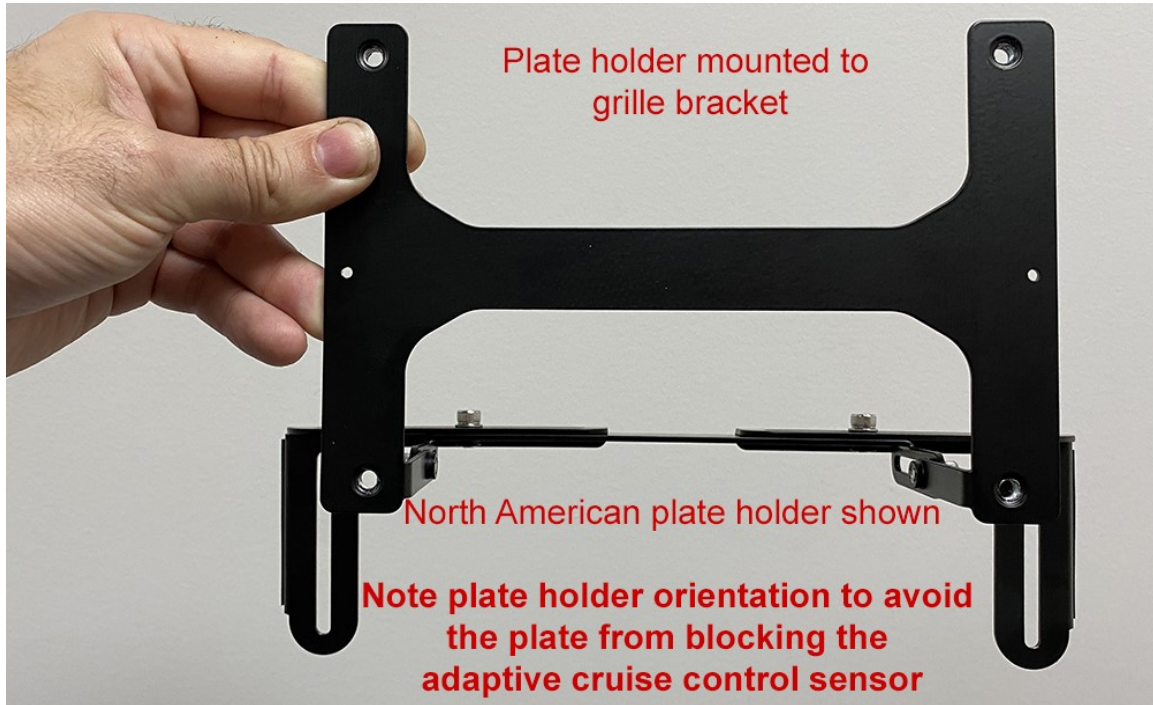
Included in the kit is a partially assembled grille bracket. This bracket has arms that can be sized to different grille configurations by sliding the vertical fixing arms of the bracket along slotted holes. Start by making sure the fixing screws are just a little loose and then slide the arms on either side so that the vertical slots line up with the center of the silver nuts on the retention hooks installed in the previous step. Once this position is established lock the assembly together by tightening the hex head fixing screws with the included Allen (hex) tool.

**NOTE:** In order to ensure a centered fit of the license plate make sure that the left and right arms are spaced the same distance from the center of the bracket.



### Step 3 – Mount the license plate holder to the grille bracket

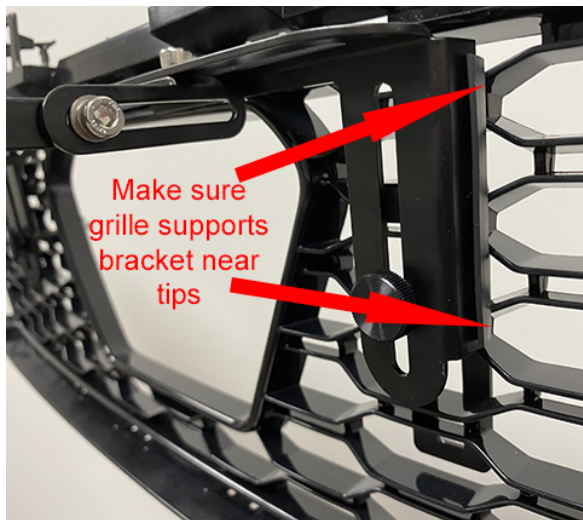
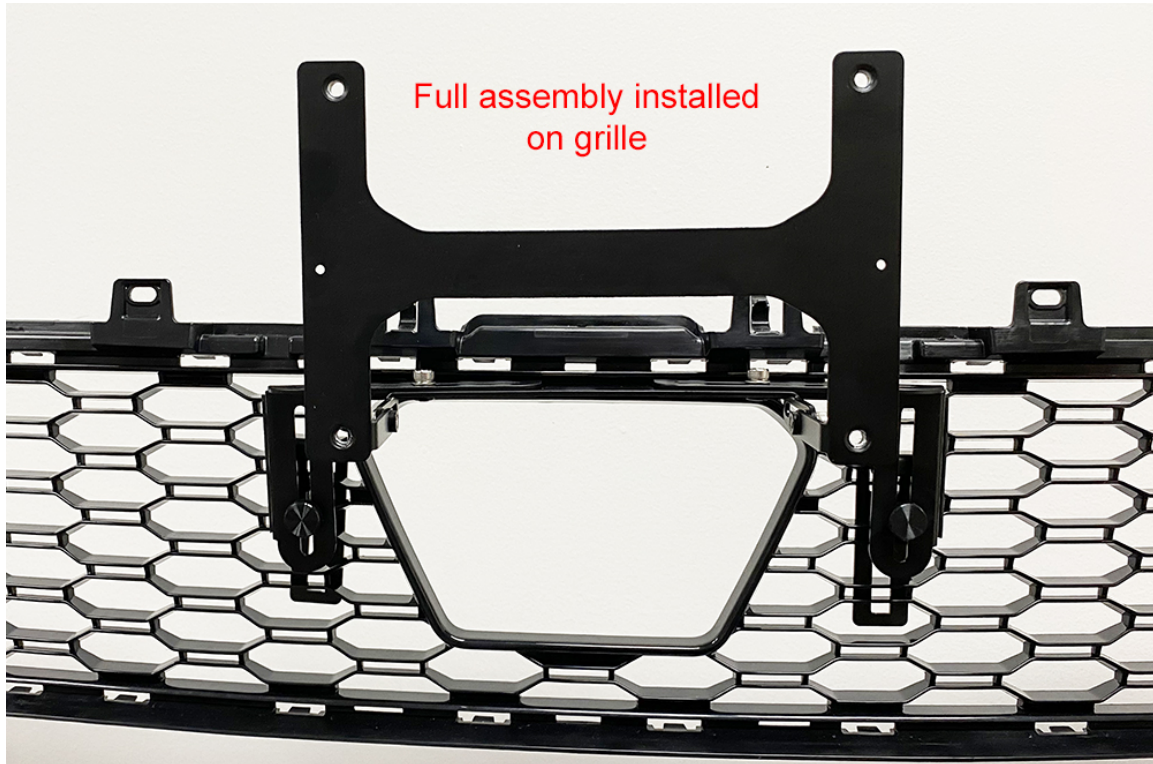
With the grille bracket now sized to your particular vehicle, license plate holder can be fixed to it. Referencing the image, the arms on the plate holder fix to the grille bracket using the included screws and washers. The smooth washer goes under the head of the screw. With the screws on both sides installed, tighten them just enough to hold the assembly snugly together.



## Step 4 – Mount the assembly from Step 3 to the grille

Returning to the grille, place the assembly built in Step three up to the grille and fix it in place using the included thumb screws. Ensure that the rubber coated supports on the grille bracket are supported by the grille as near to the ends as possible to ensure a stable fit.

The silver nut inserts on the retention hooks can slide up and down as needed. The goal is to have the thumb screws as centered as possible to the groove. To achieve this the nut inserts can be slid along the RH grooves as needed.



## Step 5 – Position the plate holder

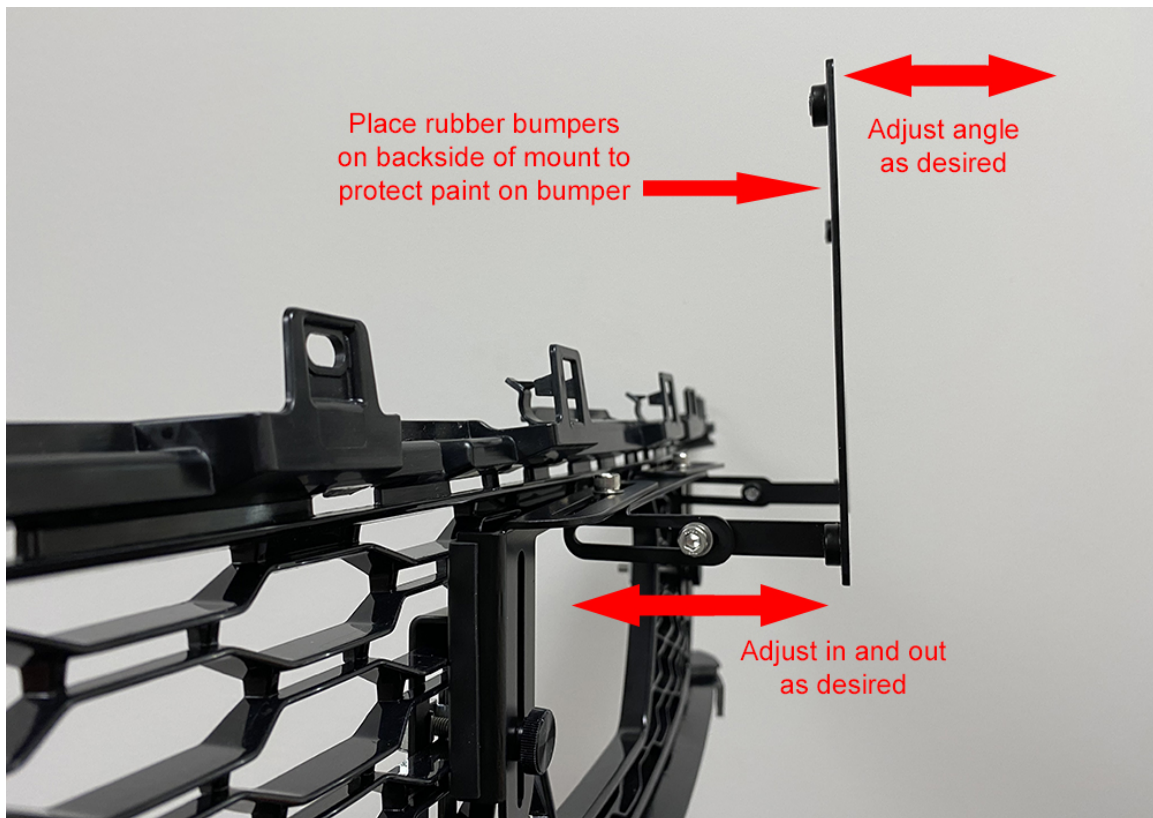
With the mount securely attached to the grille use the included Allen head (hex) tool and loosen the two screws on either side of the mount. With these screws loose you can now set your preferred angle and distance for the license plate. Once the desired position is achieved firmly tighten down the two screws to complete the installation.

**Note:** Setting the plate position and sizing to the car is only required one time. Once set the mount can be installed and removed without the need to change the angle and distance of the license plate.

### Recommended Additional Protection (included rubber bumpers)

Depending on the country / size of the front plate, it is possible that with extreme wind pressure or if bumped, that the plate can contact the body. In order to eliminate the chance of any paint damage, 2 self-adhesive rubber bumpers have been included.

One or more of these bumpers should be adhered to the backside of the number plate or mount to act as an additional protection for the front bumper. Ultimately the final location of these bumpers is **up to the discretion of the installer** however the goal of the bumper is to act as a point of contact in a worst-case scenario and should be positioned accordingly



## **Step 6 – Fitting the license plate to the holder**

### **North American License Plates**

Using a Philips head screwdriver affix your license plate to the mount using the two screws provided. Note: These screws should be long enough to accommodate most aftermarket license plate frames and there is no issue using a plate frame or cover with the Carbonio mount.

### **Rest of World (ROW) License Plates** (must have been specified at time of order)

Rest of world cars have their license plates adhered to the plate mount using high strength 3M mounting tape. Included in your kit is a small alcohol cleaning wipe. After ensuring that the backside of the license plate is clean and dry, peel off the red covering on the 3M tape and then adhere the license plate to the exposed 3M tape.

**NOTE: The bond between the 3M tape and the bumper is VERY STRONG. Be sure of its positioning before touching the license plate to the tape because you will only get one chance to make the bond.**