

# Instruction manual

Ed & Co™ multi-fix™  
capsule base series 2

Model PA0101



Keep for future reference.

To reduce the risk of serious injury or death, read this owner's manual prior to installing and using this product.

The multi-fix base and capsule are suitable for infants up to 13 kg.

Conforms to European ECE R44/04 in Group 0+ as approved by Land Transport NZ.

# Introduction

Hey there!

Firstly, thanks for choosing Edwards & Co - it truly means a lot to us that you have chosen our capsule and base to keep your family safe.

We have put a great deal of effort into ensuring that your base is the safest it can be. Our bases are rigorously crash tested and certified to the latest European safety standards in the Netherlands. To get the maximum safety from your base, it is very important that you read this instruction manual carefully. In particular, pay attention to the warnings included as well as the correct installation methods provided. Subtle differences can make a huge difference when it comes to safety.

We believe in long lasting relationships with our customers and we'd love you to keep in touch. You can sign up for our website newsletter or follow us on Facebook. Please remember that if you need anything we're a simple phone call or email away.

Enjoy your product, and remember to read this manual carefully!

Regards



Mark Edwards



Warwick Edwards

**WEB - [edwardsandcobaby.com](http://edwardsandcobaby.com)**  
**FB - [facebook.com/edwardsandcobaby](https://facebook.com/edwardsandcobaby)**

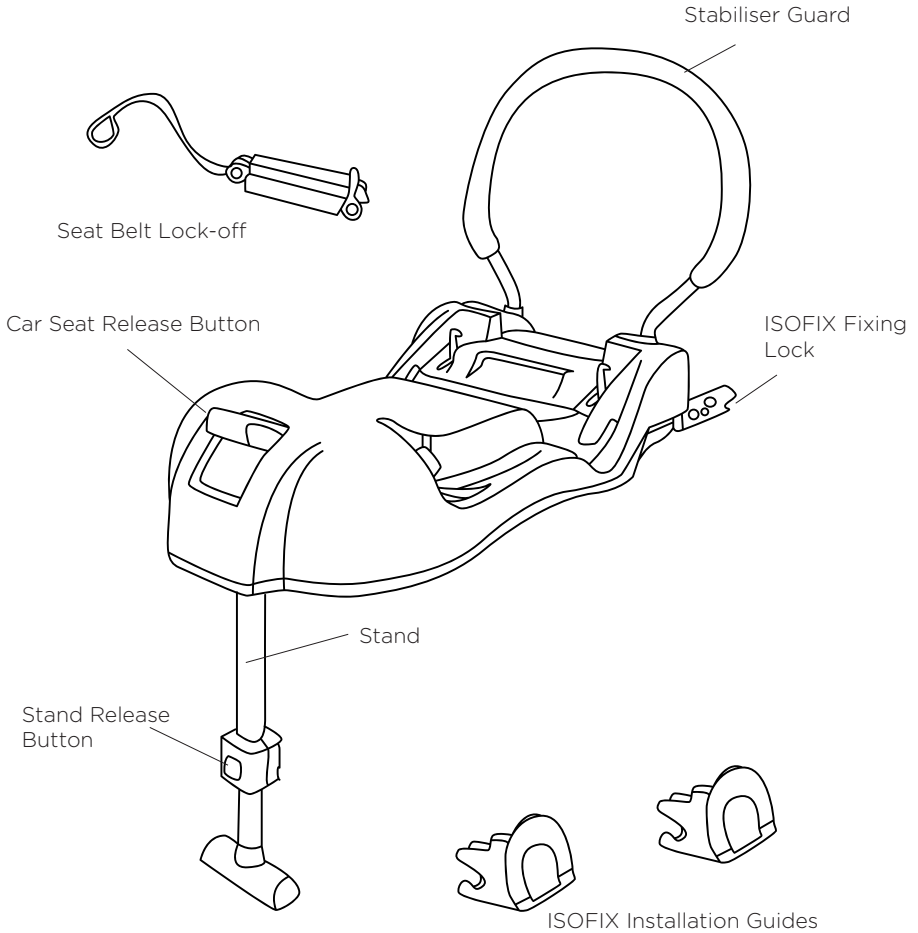
# GENERAL WARNINGS



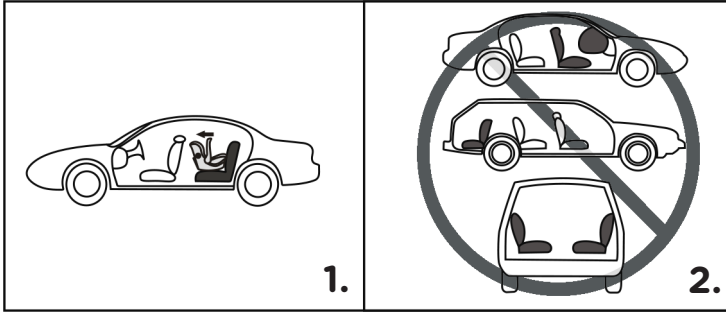
To reduce the risk of **SERIOUS INJURY** or **DEATH**, read this owner's manual and your vehicle owner's manual before installing and using this base. By properly using this base and following these instructions, you will greatly reduce the risk of serious injury or death to your child from a collision.

- This product is designed to be used with ISOFIX OR Belt Fix. **NEVER** use the device with both ISOFIX and Belt Fix anchors together as this may negatively impact its performance in a crash.
- The multi-fix base is an approved ISOFIX CHILD RESTRAINT SYSTEM. It is approved to regulation No.44/04.
- The base can fit vehicles with positions approved with ISOFIX anchors, depending on the category of the child seat and of the fixture. **ALWAYS** refer to your vehicle's handbook before using base. The mass group and the ISOFIX size class for which this device is intended is: Group 0+, E - ISO/R1.
- When the device is used with a car seat 3-point seat belt, it is only suitable for use in the listed vehicles fitted 3 point, approved to ECE Regulation No.16 or equivalent standards.
- This base can only be used with the Ed & Co Car Seat Capsule. **NEVER** use this product with another capsule shell.
- **NEVER LEAVE YOUR CHILD UNATTENDED IN THE CAR SEAT.**
- **NEVER USE THE BASE IN A PASSENGER SEAT FITTED WITH AIRBAGS. ONLY FIT** to a forward-facing passenger seat.
- **NEVER** use the product without fastening it into your vehicle.
- **NEVER** alter or modify the product in any way as this may affect its performance in the event of a collision.
- The base is suitable from birth up to 13kg (approximately 12-15 months old).
- **DISCARD** the base if it is involved in a serious collision **EVEN** if no damage is visible.
- **NEVER** place heavy items on top of the base as this may distort the plastic.
- Do not store in areas that may get particularly hot in summer, like roof space, car boots or beside shed walls.
- Do not to use this base if it is older than 7 years from the manufacture date (the manufacture date is stamped on it's underside) as it's performance in an accident may be reduced.

# Features of your car seat base



# Where to install your base



**IMPORTANT** - This multi-fix base is only suitable for approved vehicles fitted with ISOFIX or 3 point seat static or retractable seat belt.

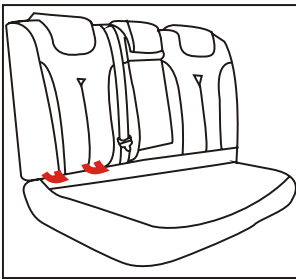
**IMPORTANT** - Only install the seat in a forward-facing passenger seat as indicated in Figure (1) above. A forward-facing seat is one that faces in the direction of the car's movement. Do not install into a rear-facing or side-facing passenger seat as pictured in Figure (2) above.

**IMPORTANT** - Do not install the car seat in a passenger seat fitted with airbags.

# Important information

This multi-fix base may be installed to your car using the ISOFIX system (if fitted) **OR** the 3-point seat belt system.

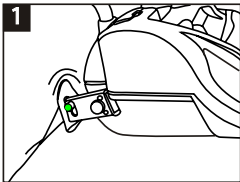
Refer to the section “Where to install your base” for the locations suitable for installation.



## ISOFIX

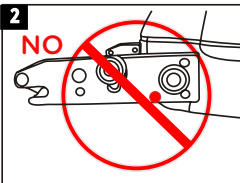
The ISOFIX system consists of two anchors at the bottom corner of your vehicle's passenger seats.

Always refer to your vehicle's handbook before using the ISOFIX system.

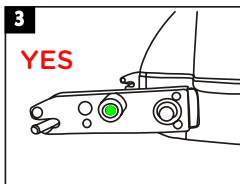


The ISOFIX installation guides are not necessary if not using the ISOFIX system.

Always check the ISOFIX fixing locks are correctly installed following the guides as shown in Figure (1), (2) and (3).



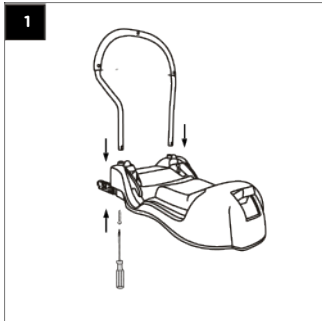
Check the installation by pulling the base.



## Assembling the base

This section shows how to assemble the base when opened from the box.

Tools required - small “Phillips” screwdriver



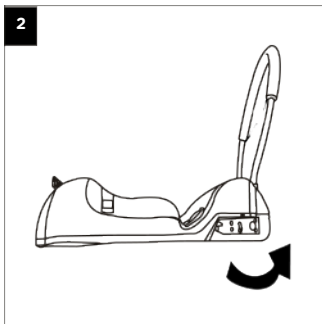
Put the tubes on the stabiliser guards into the socket.

Press the tube down firmly until they reach the bottom of the socket.

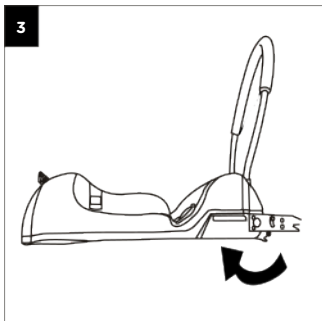
Using a Phillips screwdriver, fasten the included screws into the stabiliser tubing.

Pull the stabiliser guard to check it's secured.

## Using the ISOFIX arms



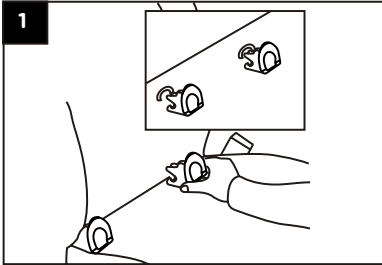
When using the ISOFIX installation system, extend the fixing lock by lifting the latch and turning the lock in the direction of the arrow.



The fixing locks can be stowed when not in use.

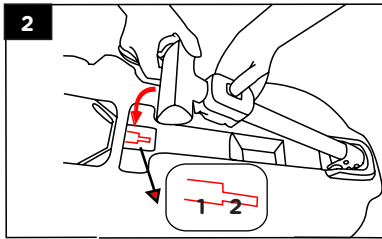
**IMPORTANT** - always stow the ISOFIX fixing lock as pictured in Figure (3) if installing your base using the 3-point seat belt method.

# Installing the base using ISOFIX

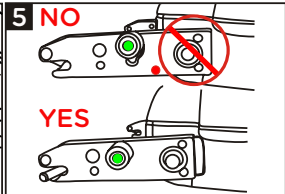
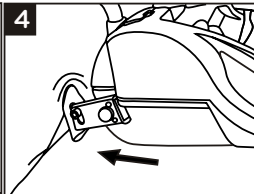
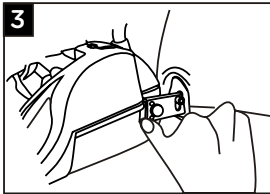


1 Insert the ISOFIX installation guides in between the seat fabric as shown in Figure (1).

These guides make installing the base easier by uncovering the location of your vehicle's ISOFIX anchors. They aren't always helpful depending on your vehicle. Don't use them if not required.



2 Open the base stand by pressing the stand release button and moving the locking clip from position 2 to 1 as shown in Figure (2).



3 Insert the ISOFIX fixing lock through the installation guides (if you are using them) and connect them to the ISOFIX anchor in your vehicle as shown in Figure (3) and (4).

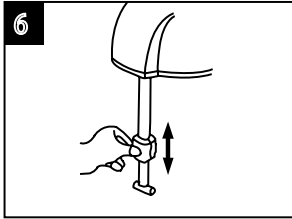
You should hear a distinct **CLICK!** when the lock connects to the ISOFIX anchor.

Figure (5) pictures the correct setting displayed on the fixing lock upon a correct installation. A green indicator will be shown once installed as indicated.

**WARNING** - always check the indicator matches Figure (5) before use. Double check the connection by pulling the base against the anchor. There should be a very strong, tight, connection.



## Installing the base using ISOFIX

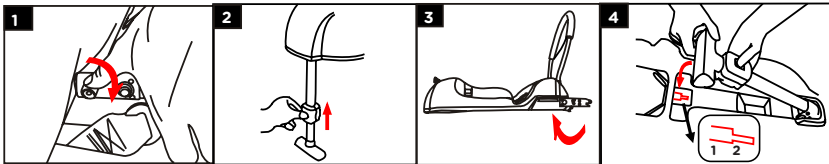


Press the stand release button and extend the stand feet to **lightly touch** the floor of your vehicle.

**WARNING** - always check that the base sits level or slightly sloped towards the bottom of your vehicle's passenger seat. You can use the level indicator found on the car seat capsule for guidance (see the instructions provided for your capsule).

An incorrectly installed car seat may cause death or injury. If you are unsure, please contact us or talk to your local Child Restraint Technician, found via the New Zealand Transport Agency website - [www.nzta.govt.nz](http://www.nzta.govt.nz)

## Removing the base using ISOFIX



Remove the ISOFIX fixing lock by pressing the release button as shown in Figure (1).

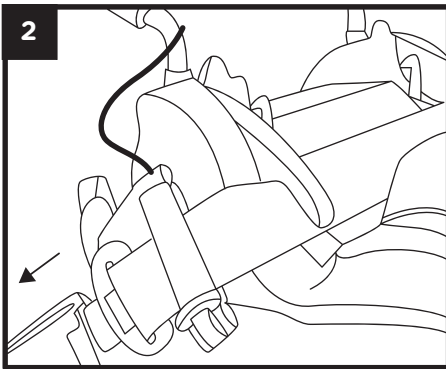
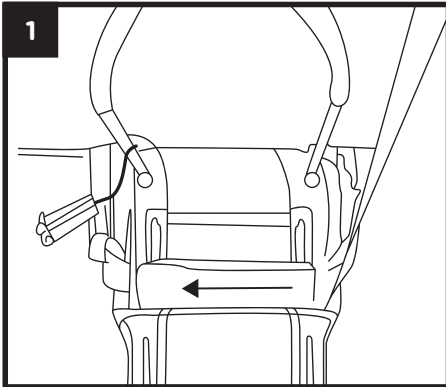
Retract the stand by pressing the stand release button and pushing it back into its housing as shown in Figure (2).

Retract the ISOFIX fixing lock into its housing as shown in Figure (3).

Retract the stand into its housing as shown in Figure (4).

## Installing the base using seat belts

Open the base stand by pressing the stand release button and moving the locking clip from position 2 to 1 as shown in Figure (2) on page 8.



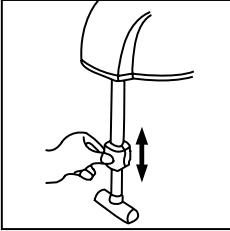
1. Thread the lap belt and shoulder belt of your vehicle's 3-point seat belt through the seat belt guide stickers found on the base (as shown in Figure (1)) and connect the buckle as shown in Figure (2).
2. Put your weight down onto the base and pull the seat belts as tight as you physically can, then attach the belt-lock as shown in Figure (2). The belt-lock should always be on the same side of the base as the car buckle. Note - if you find the seat belt buckle is too long, you can twist it up to three times to shorten it.
3. If your car is fitted with an Automatic Locking Retractor (ALR), pull the shoulder belt all the way out, then slowly release it until you hear a clicking/ratcheting sound. Release it until the belt is tight.

**IMPORTANT** - make sure the lap belt and shoulder belt are tightly wrapped around the seat before use. We suggest a few attempts to get it as tight as possible.

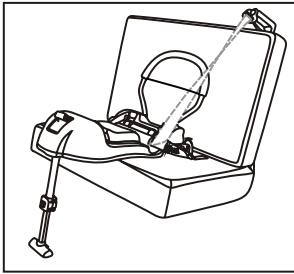
**IMPORTANT** - for vehicles with leather seats we recommend the use of a rubber mat to reduce movement of the base.

**WARNING** - the belt should be flat against the frame of the base. If belt is crimped or twisted, reinstall the base.

## Installing the base using seat belts



Press the stand release button and extend the stand feet to **lightly touch** the floor of your vehicle.



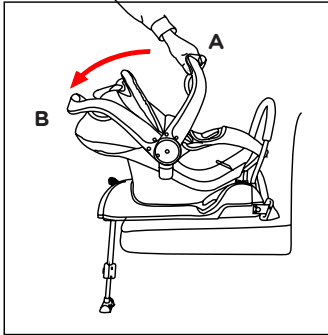
The completed installation should resemble the figure on the left.

**WARNING** - when installing the base with seat belts, it is only suitable for 3-point static or retractable versions.

**WARNING** - always check that the base sits level or slightly sloped towards the bottom of your vehicle's passenger seat. You can use the level indicator found on the car seat capsule for guidance (see the instructions provided for your capsule).

An incorrectly installed car seat can cause death or injury. If you're unsure about the installation, please contact us or talk to your local Child Restraint Technician via the New Zealand Transport Agency website - [www.nzta.govt.nz](http://www.nzta.govt.nz)

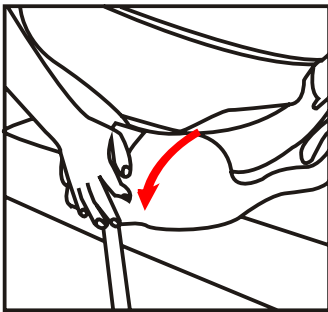
## Installing and removing capsule



### Installing:

Place the car seat capsule onto the base until you hear a distinct **CLICK!** The capsule should be firmly secured. You can check this by firmly pulling the seat upwards.

**IMPORTANT** - The handle must be positioned in B when driving.



### Removing:

With the handle in position A, press the red lever downwards and lift the car seat up at the same time.

## Caring for your base

### Cleaning the base:

- Wipe with a mild solution of soap and water.
- **NEVER** use household detergents as they can weaken the plastic.

### Important information:

- **NEVER** lubricate or oil any part of the base.
- **NEVER** use solvents, harsh detergents or washing up liquids.
- Dry thoroughly before storage.
- Store in a well-ventilated area, away from direct sunlight.
- Store in a safe place when it is not being used. Avoid placing heavy objects on top of it.
- **NEVER** allow the seat to come into contact with corrosive substances such as battery acid or petroleum products.

## Warranty information

All Edwards & Co products are guaranteed for two years from the date of purchase against defects in material and workmanship.

If we determine that the product has a manufacturing fault, we will repair or replace it free of charge to you. The decision to repair or replace is solely at the discretion of Edwards & Co. Proof of purchase must be provided.

The warranty is “return to base” and not a free in-home service. This means the customer is responsible for any inwards freight charge to return the product to an Edwards & Co representative for warranty or service.

Our warranty excludes claims resulting from misuse, abnormal use, overloading, general wear and tear, child outgrowing the product, not following instructions, transportation damage (including airline or freight damage), poorly maintained product, dropped goods, negligence, second-hand product, modified product, colour fading, mould, damage to inner foam in use or fabric cuts and tears.

The warranty excludes repairs to car seats that have been involved in a car accident.

Any replacement will not give the right for the warranty period to be extended.

Edwards & Co does not cover warranty if the product has been purchased second hand or from an unauthorised reseller.

For the complete terms and conditions of our warranty, please visit our website - [www.edwardsandcobaby.com/warranty](http://www.edwardsandcobaby.com/warranty)



[edwardsandcobaby.com](http://edwardsandcobaby.com)