

**baby lock**

*Euphoria*



## *Why a baby lock?*

For decades, baby lock products have been prized for their strength and ease of use in particular. Both beginners and advanced sewers can enjoy the machines' special technical features and all of the possibilities these offer from the word go. So, whether you rely on the factory settings or adjust the machine to suit your individual needs, you will love the outstanding sewing results, no matter which fabric or thread you use.



The machines have been developed by baby lock engineers and combine many outstanding mechanical features. They require no computer technology, making them more reliable and extremely durable, therefore guaranteeing long-lived perfect results.

The world's first domestic overlocker was a baby lock. The corporate philosophy that was defined at the very beginning – to develop top-quality, first-class products – has been strictly followed to this day: quite simply, Made in Japan. The Japanese company does not rely on mass production, making this product something very special.

The machines are produced in a craft-like manufacturing facility in the north of Japan. Every single product has to pass a 20-minute function test. The staff concentrates on sewing all of the various stitches and optimising the thread tension. They polish, inspect and fine-tune the important and sensitive loopers by hand. These are just some examples of the many individual operations performed by the specialist staff.

MADE IN  
JAPAN 

# Euphoria

The queen of coverstitch machines



„This machine is just what I have been waiting for. The Euphoria coverstitch machine from baby lock is in a class of its own. Thanks to its wide throat, I can now coverstitch to decorate even large pieces of fabric. Of course, the Euphoria also has the familiar baby lock features such as an automatic thread delivery system, air threading system for the looper and a needle threader.

No troublesome threading, no adjusting of the thread tension. But if I do want to modify one of my stitches, there are additional adjustment possibilities that let me change the thread tension to suit my needs. All of these features make coverstitching even more fun.“

# Coverstitch perfection



## *Ingenious needle catch tray*

The ingenious needle catch tray offers extra safety if you want to modify stitches and thus have to exchange the needles. If a needle falls down after loosening, you no longer have to look for it. Just pull out the needle catch tray and pick it up off the magnetic surface.

## *Tidy workplace*

A tidy, well arranged workplace is a big advantage when sewing. The easily accessible accessories compartment keeps everything you need close at hand and pins will never stray because they are held safely by the magnetic surface. Even though the accessory compartment is located directly beneath the spool holder, neither the cones nor the threads will move when you open or close the compartment. Taking out the tweezers, the screw driver or another tool does not affect the stitch quality.





## *The sheer joy of your hobby*

Working with needle and thread requires a steady hand, a practiced eye and a lot of patience when it comes to threading. This is so difficult for some people that it takes the fun out of sewing. But it doesn't have to be like this! Our proven ExtraordinAir™ threading system solves this problem on its own. First thread the loopers at the touch of a button with a jet of air. The innovative, mechanical needle threader then helps you target the eye of the needle with the needle threads.



## *Creative coverstitching with plenty of space*

Sewing is a handicraft that lets you express yourself, showcase your own creative ideas and discover artistic diversity. This is exactly what we want to encourage!

We offer an extraordinary machine for almost any type of fabric or thread. Thanks to the automatic thread delivery (ATD) system, even working with difficult fabrics poses no problems because the machine always provides the correct setting to achieve an optimum sewing result. The thread quality doesn't matter. Whether a sturdy yarn or an ultra-thin thread, the seams always look neat.

But if a seam does not come up to your personal expectations, you can easily adjust the looper and needle thread tension individually. The large throat of 140 mm provides a lot of space and allows you to handle large pieces of fabric and decorate them with coverstitch seams.

The knee lift is an additional aid for more difficult projects. It leaves your hands free to guide the fabric reliably. Simply lift and lower the presser foot with your knee.



### **baby lock Campus**

Tips & tricks for your creative hobby.  
Download our instructions for free.  
[www.babylock.co.uk/campus](http://www.babylock.co.uk/campus)

# Great coverstitching fun on a truly grand scale



**Needle thread fine adjustment:**  
fine tuning for seams with different types  
of threads – individual modification of  
the stitch pattern

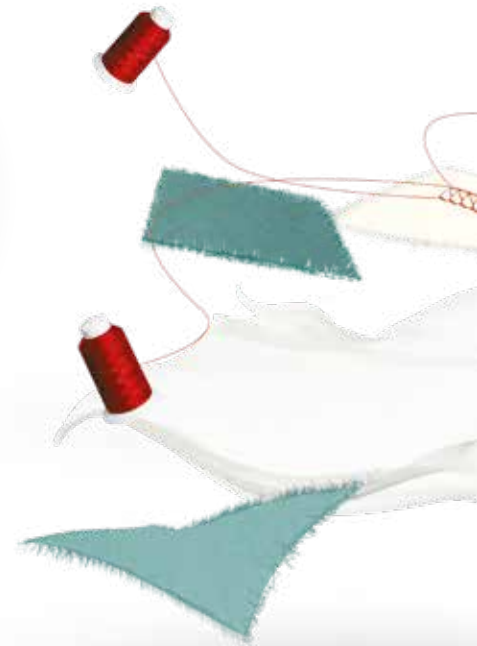


**Retractable feed dog:**  
the feed dog is lowered automatically  
when the presser foot is raised.

Eileen about the

*Euphoria*

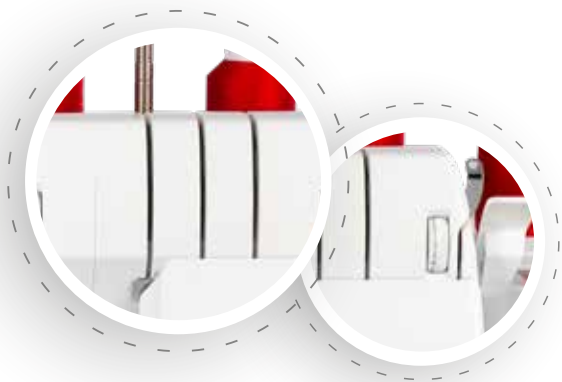
“ My dearest wish has come true. Coverstitching  
with so much space and unbelievably easy. ”





## Technical Data

Type of machine	cover stitch machine
Number of needles	1 to 3
Number of threads	4/3/2
Stitches per minute	1500
Stitch length	1 to 4 mm
Stitch width	3 or 6 mm
Differential feed	multistage
Weight	11,6 kg
Size in cm (WxHxD)	49x37x31



**Patented automatic thread delivery system – ATD system** for optimum sewing results on different fabrics and no tensions. And for all seam lovers who like to have fun with different threads, simply turn the **looper thread tension wheel**.



**ExtraordinAir™ Threading system:** By pressing the button, the loopers are automatically threaded with the aid of air.

*Developed by baby lock in 2009*



The only cover stitch machine with a **needle threader**. The threads are inserted into the eye of the needles in three easy steps.



**Extra space** for the really large projects (throat space: 140 mm)

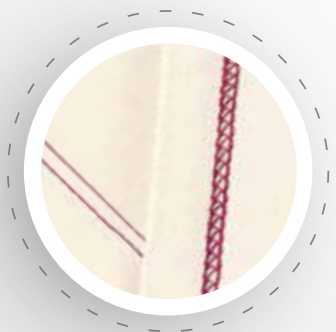


**Knee lift** for free hands to guide the fabric safely. Simply lift and lower the presser foot with the knee.

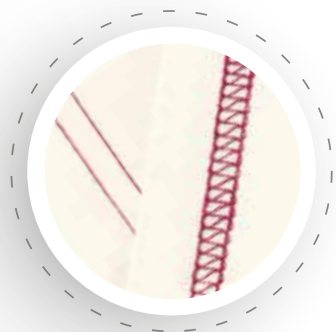


**Differential feed**  
Individual adjustment of the fabric feed to prevent any distortion on stretch or fine fabrics.

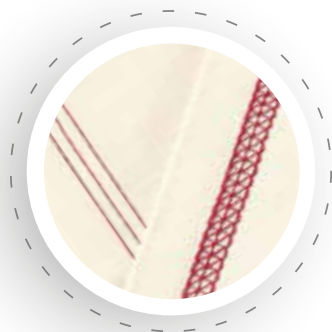
# Stitch selection



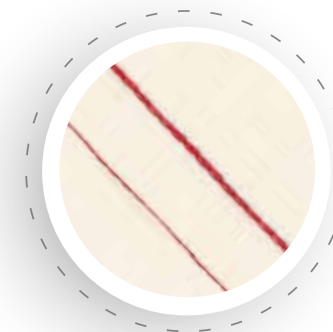
**3-threads cover stitch 3 mm**  
to sew hems, create pintucks and decorative effects



**3-threads cover stitch 6 mm**  
for hemming and for decorative effects



**4-threads cover stitch 6 mm**  
to hem very stretchy fabrics and create decorative effects



**Double chain stitch**  
to join highly wear-resistant fabrics and create decorative effects



*4 years warranty*

2 years statutory warranty plus  
2 years baby lock extended warranty

**baby lock**

[www.babylock.co.uk](http://www.babylock.co.uk)  
[info@babylock.co.uk](mailto:info@babylock.co.uk)

MADE IN  
JAPAN

