

# SOLARPORT

Car Covers and Shelter  
info@carcoversandshelter.com.au

Ph: 0425 230 866

www.carcoversandshelter.com.au

## SOLAR CARPARKS



**RM Residential  
SOLAR CARPARK SOLUTION**



### FEATURES

- Single & Double Solar Carport
- Steel Construction\*
- Up to 6.3kW Power Output
- Wind rating C3
- Sungrow Inverter(standard option)
- Astronergy Solar panel(standard option)
- Water & Cable Management

Single



### RM Residential SOLAR CARPARK SOLUTIONS

**SINGLE CARPARK DIMENSIONS**  
3.097m Span x 5.870m D x 2.600m H  
Clearance Height of 2.450m

Single



Double

**DOUBLE CARPARK DIMENSIONS**  
6.097m Span x 5.870m D x 2600m H  
Clearance Height of 2.450m

Optional extra: Colour Coding  
Standard Colour is Sand

### FEATURES

**Steel Construction\***

**Single: 3.15 kW Power Output | Double: 6.3 kW Power Output**

**Single: 9 units x 350W Panels | Double: 18 units x 350W Panels**

**Wind rating C3**

**Sungrow Inverter(standard option)**

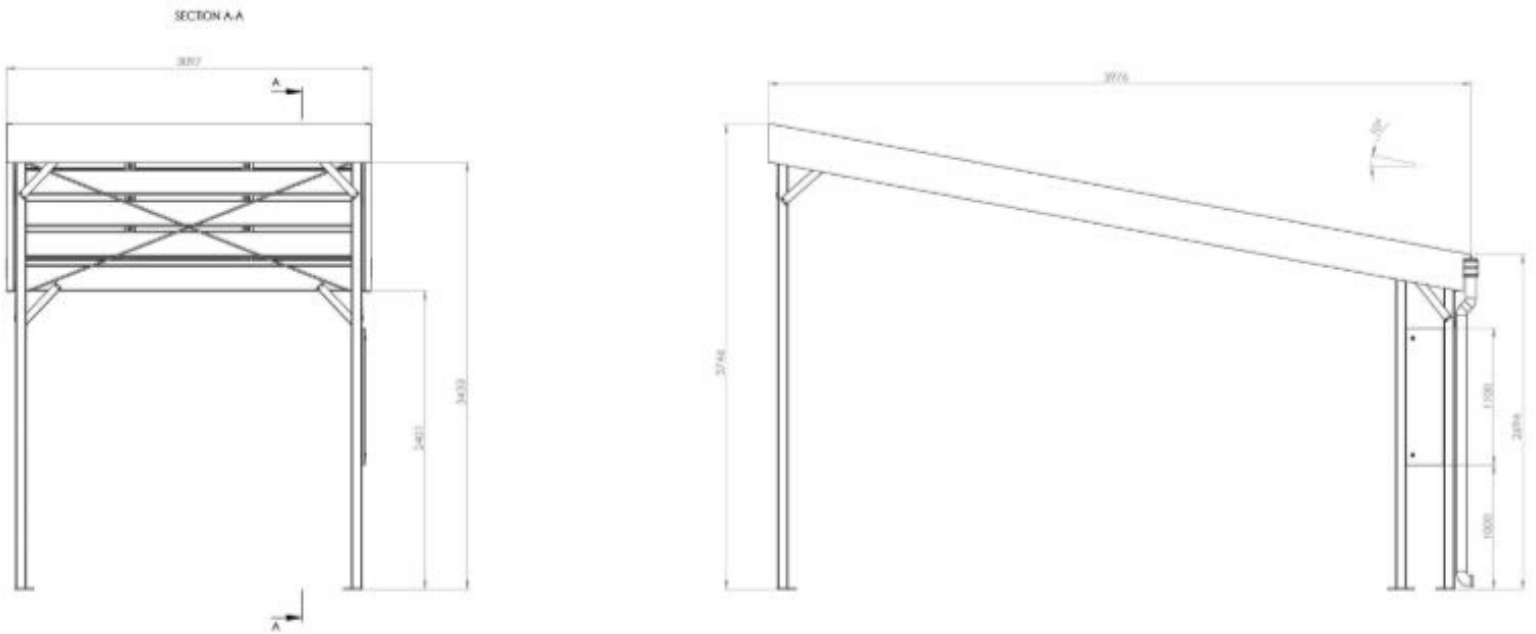
**Astronergy Solar Panel (standard option)**

**Water & Cable Management**

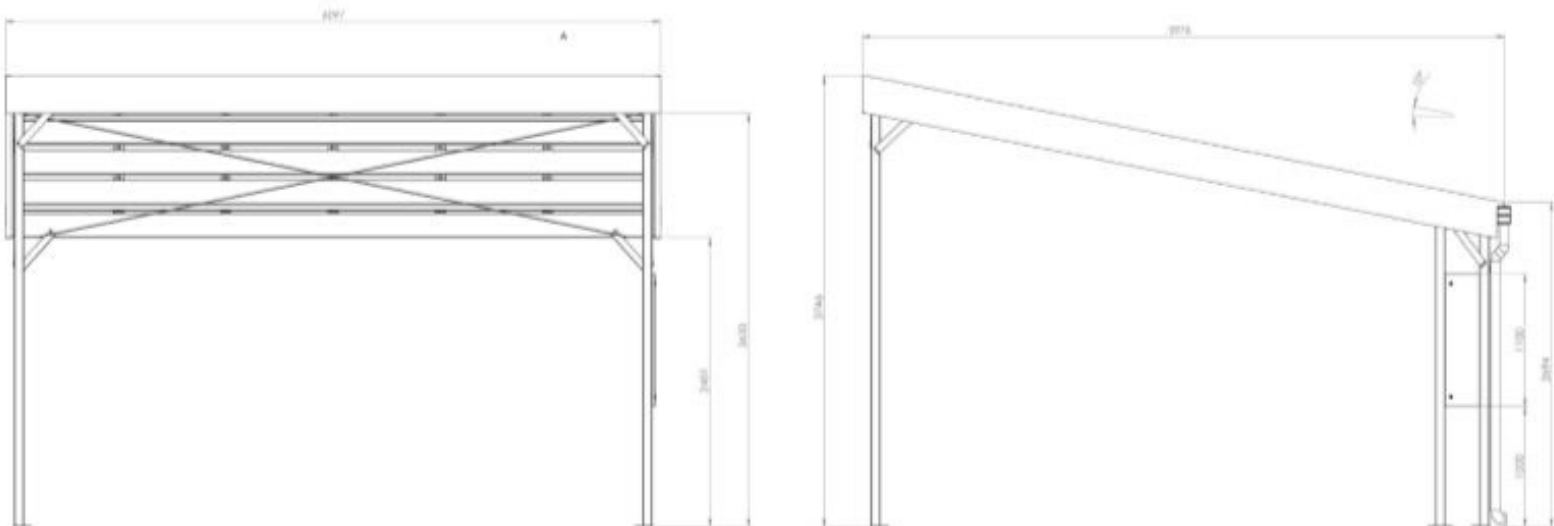
**Expandable in a modular end to end design**

### DIMENSIONS

#### Single Solar Carport



#### Double Solar Carport



### COLOUR CODING

COLORBOND® STEEL COLOUR CHART

#### STANDARD COLOUR RANGE

	Basalt®		Classic Cream™		Cottage Green®		Cove®
	Deep Ocean®		Dune®		Evening Haze®		Gully®
	Ironstone®		Jasper®		Mangrove®		Manor Red®
	Monument®		Night Sky®		Pale Eucalypt®		Paperbark®
	Shale Grey™		Surfmist®		Terrain®		Wallaby®
	Windspray®		Woodland Grey®				

*Car Covers and Shelter*

*[www.carcoversandshelter.com.au](http://www.carcoversandshelter.com.au)*

*[info@carcoversandshelter.com.au](mailto:info@carcoversandshelter.com.au) 0425 230 866*



**LC LIGHT COMMERCIAL**  
EXPANDABLE SOLAR DOUBLE  
CARPARK SOLUTION

**FEATURES:**

- Wind region C.
- \*Steel Construction.
- Modern attractive design.
- 6.3kW per double carpark.
- Infinitely expandable.
- Suspended slab mount.
- Water Management System.
- Eco Rail Patented Solar Panel Fixments system.

**OPTIONAL EXTRAS:**

- Infinitely expandable
- Electric vehicle charging stations
- Battery Storage
- Corporate colours and logos for advertising.

**SPECIFICATIONS:**

- Double Structure Output 6.3kW
- \*Structure and Purlins are Galvanised Steel and EcoRail is Marine Grade Aluminium.
- Approximate Gross Weight (Structure 780kgs)
- Sungrow 5KTL Grid Connected Inverter
- 18 Units Astronergy 350w/72 Cell Solar panels.
- Gutter system including 90mm PVC downpipe system to above ground discharge
- 10° pitch roof
- Double Carport Dimensions: 6.097m Span x 5.870m D x 2600m H (Clearance Height of 2.450m)



Our Solarport system has an inherent water management system that is integrated within the structure. Our unique IP protected design provides an integrated water management system that has a unique channel design and proprietary sealing system that captures water ingress and directs it to a guttering and down pipe system. Our proprietary water management system is extremely efficient and tested to be watertight, however is dependent on the volume of rainfall the system is subjected to.



SOLARPORT LC Light Commercial model can be used in light commercial environments such as small factory carparks, police stations, schools, retirement villages and much more.

\*All structures are manufactured in Australia and are subject to Australian Manufacturer's Warranty. Electrical Componentry supplied with these systems are subject to Manufacturer's Warranty. Contact us to discuss the design to best suit your application.

\*Solarport RM and LC Models may be subject to variation of specifications without notice. Any images provided are indicative only.

