

CAR COVERS  
AND SHELTER



# Portable Carport



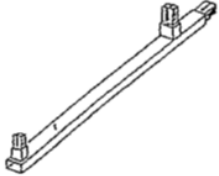

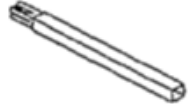


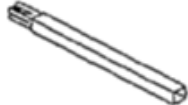
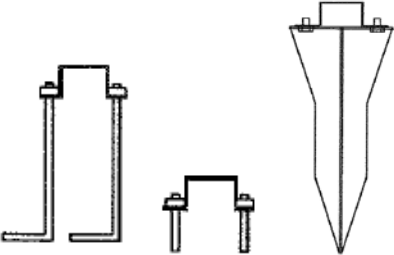
## ASSEMBLY INSTRUCTIONS

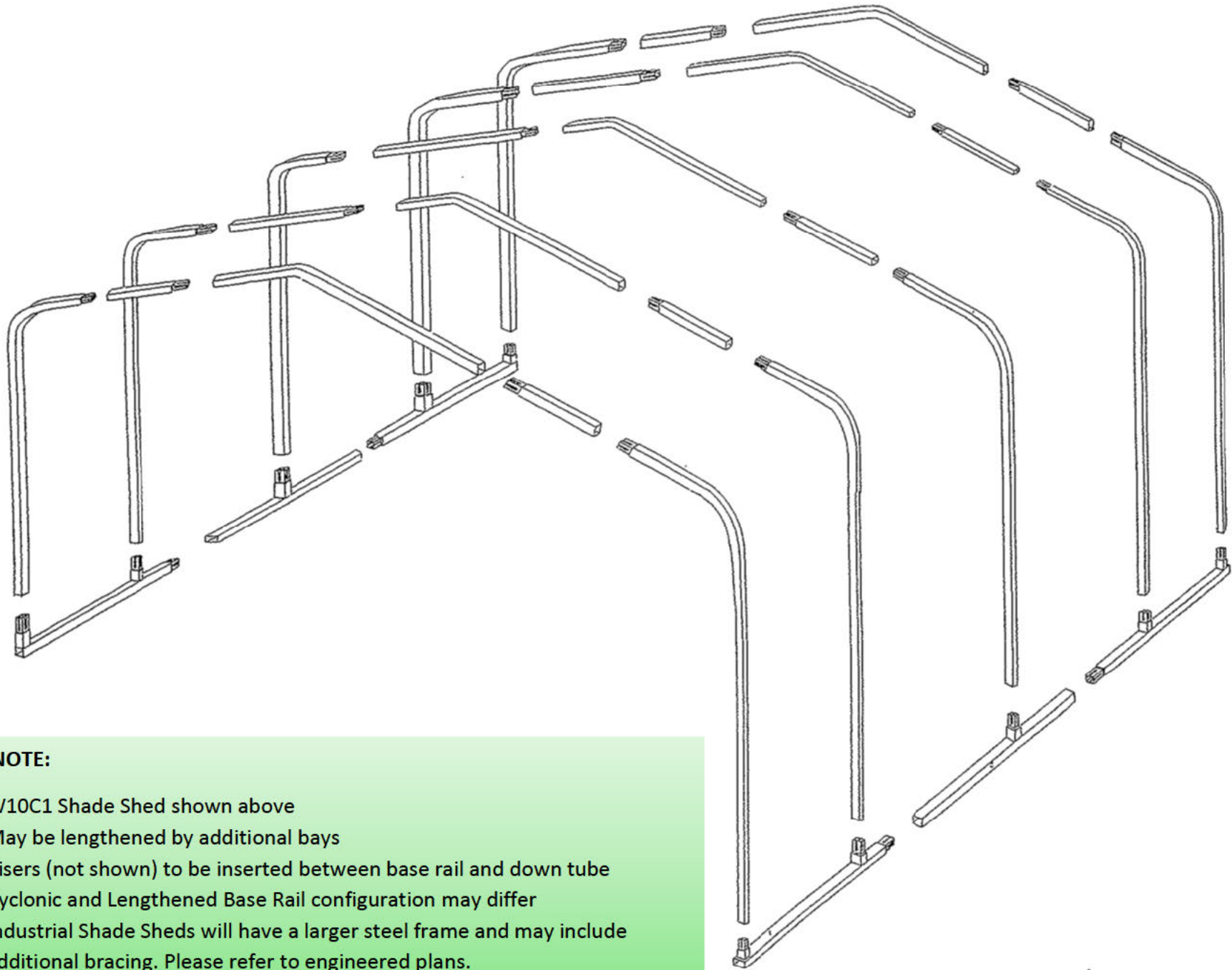
Search “Shade Shed Assembly” on YouTube

[info@carcoversandshelter.com.au](mailto:info@carcoversandshelter.com.au)

1300 851 038

Car Covers and Shelter

<p style="text-align: center;"><b>Base Rail</b> (multiple configurations available)</p>	
<p style="text-align: center;"><b>Down Tube</b></p>	
<p style="text-align: center;"><b>Spreader</b> (not required for W6 Shade Shed)</p>	
<p style="text-align: center;"><b>Nose</b></p>	
<p style="text-align: center;"><b>Internal Joiner</b> 70mm x 45mm (flat packed sheds only)</p>	
<p style="text-align: center;"><b>Riser</b> (optional extra)</p>	
<p style="text-align: center;"><b>Hold Downs</b> Concrete Pier Kit, Saddle &amp; Dynabolts or Ground Anchors. Please ensure you have ordered the correct amount for your wind area</p>	

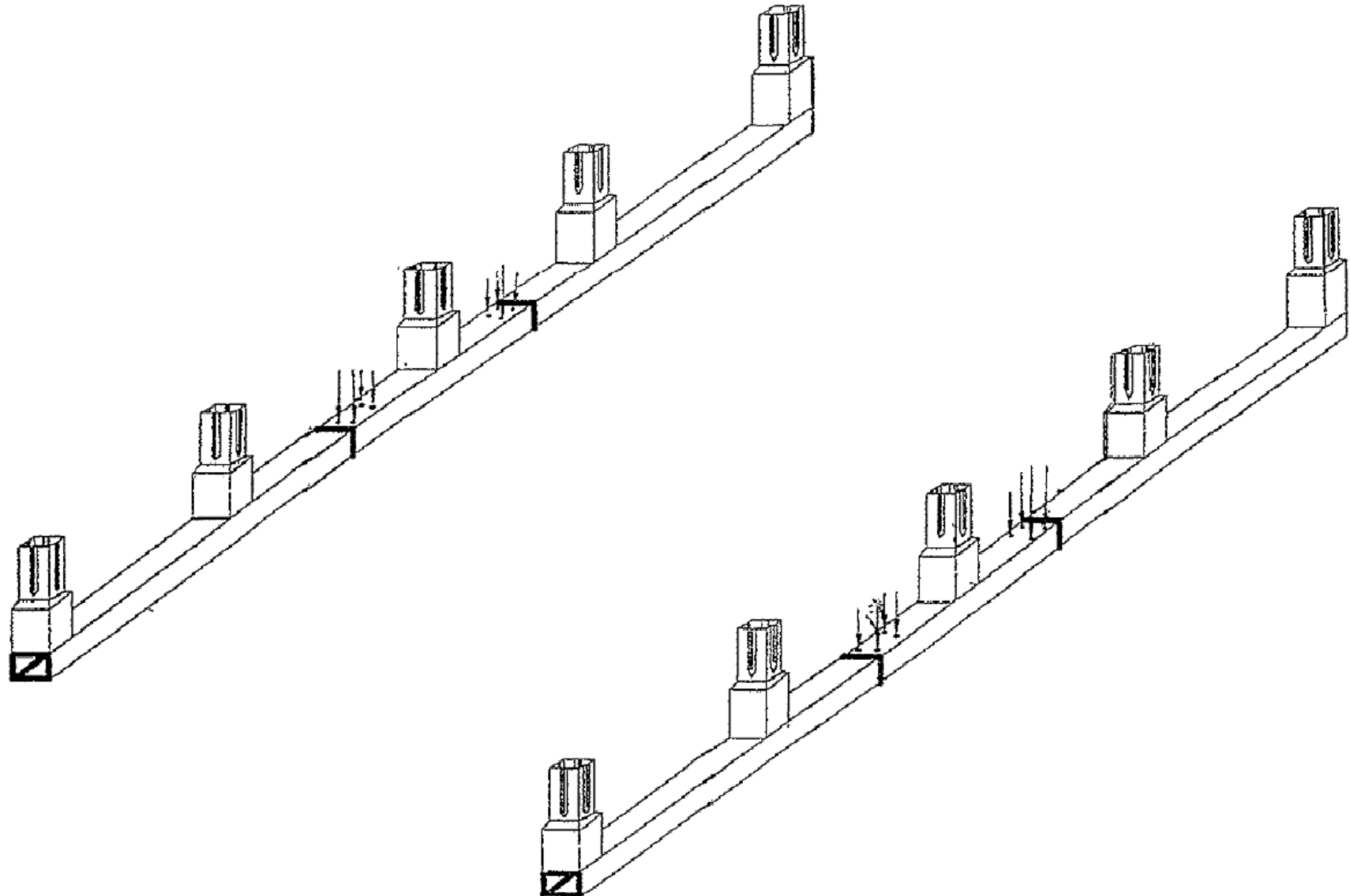


**PLEASE NOTE:**

- W10C1 Shade Shed shown above
- May be lengthened by additional bays
- Risers (not shown) to be inserted between base rail and down tube
- Cyclonic and Lengthened Base Rail configuration may differ
- Industrial Shade Sheds will have a larger steel frame and may include additional bracing. Please refer to engineered plans.

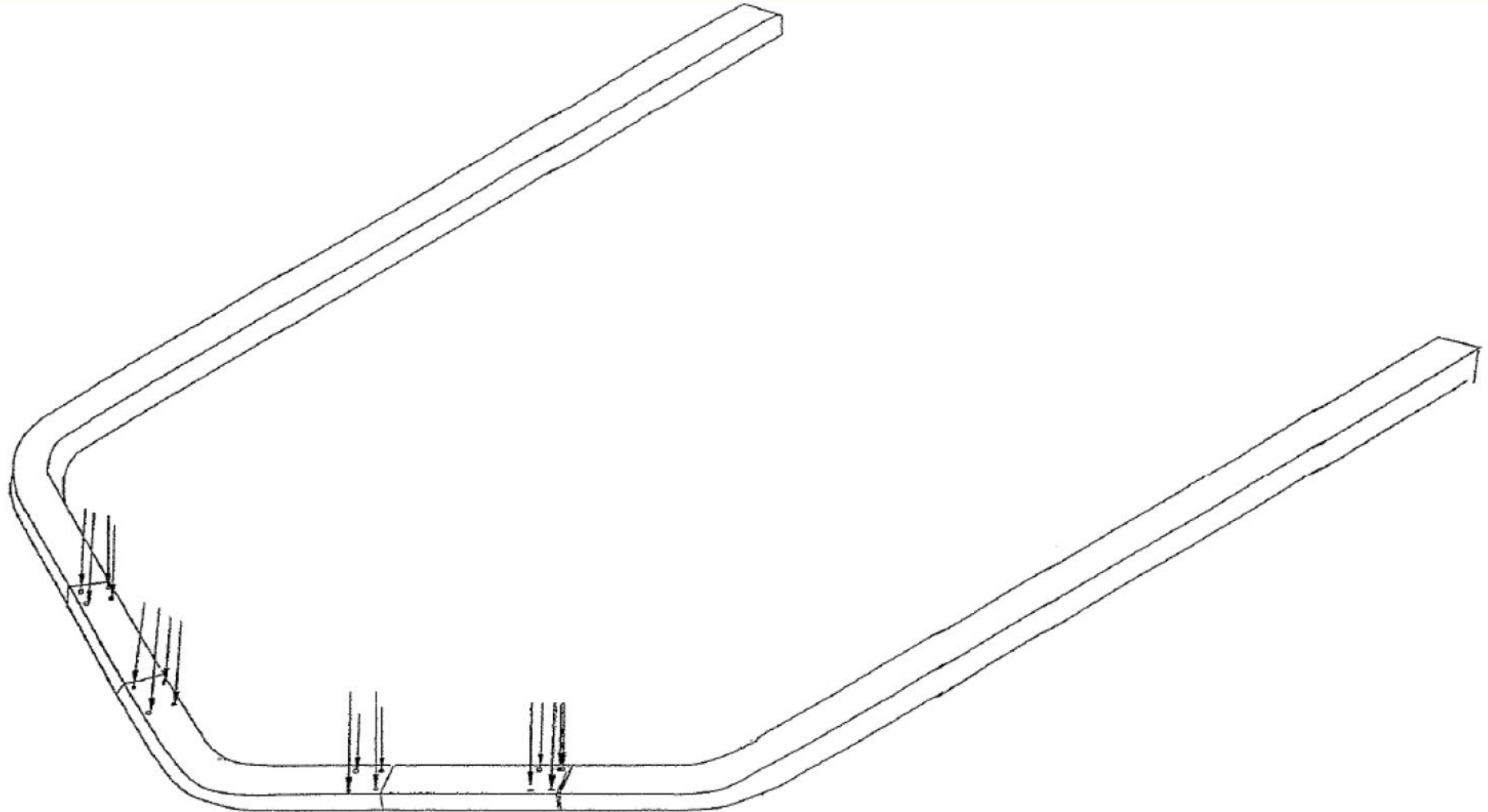
# STEP 1. Assemble the Base Rails

Join together your base rails and using frame screw provided, screw together. 4 Screws in the top 75mm edge, at each join is recommended.



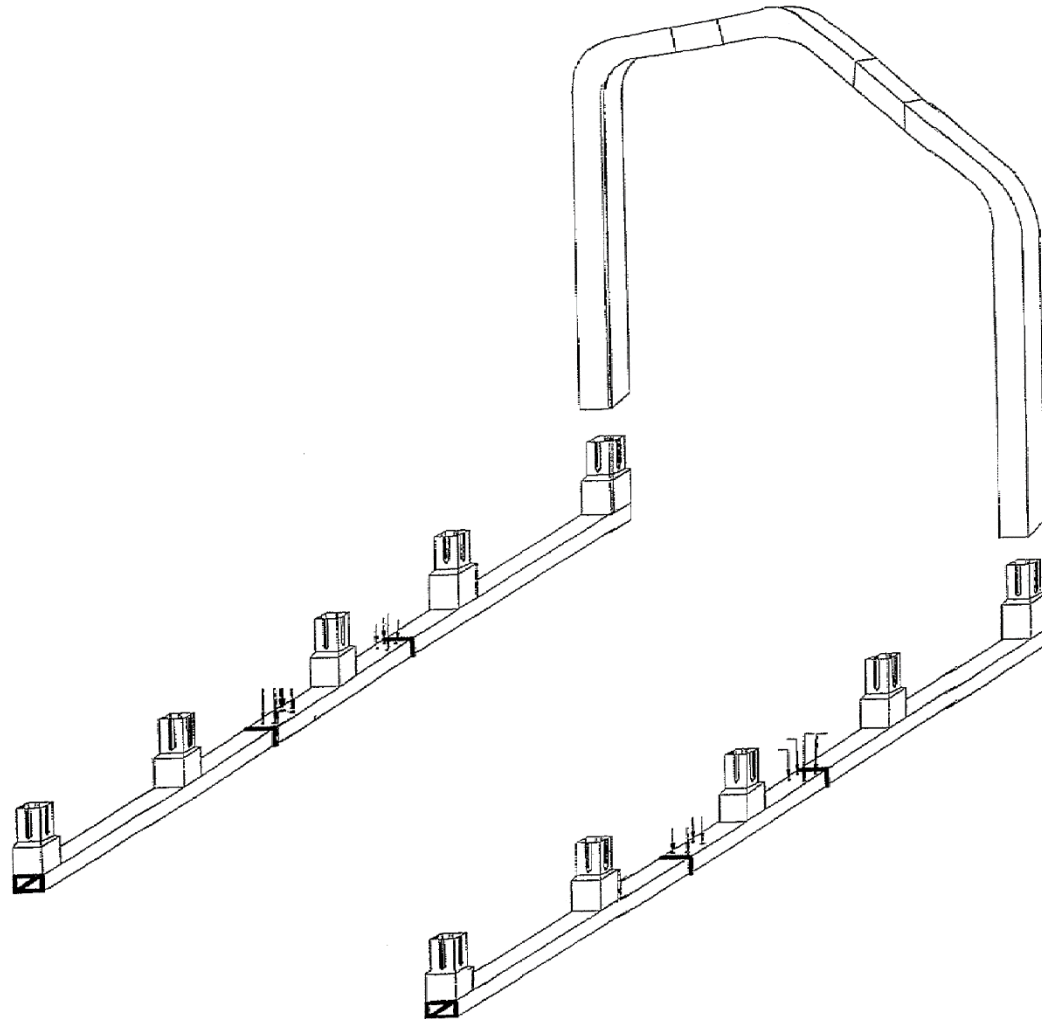
## STEP 2. Assemble the Portal Frame

Join the Down Tube, Spreader (not applicable in W6 Sheds), Nose and Riser (optional extra) to create a portal frame to your desired measurements. Outside to Outside measurement should be as per the engineered plan provided. However, cutting the Spreader will make the shed narrower if required. Risers are used for additional height or uneven ground. Swaged Joins should be inserted 150mm into the next piece. Internal Joiners should be inserted 150mm into each side of the join.



## STEP 3. Attach the Portal Frames to the Base Rails

Safely pick up the portal frame and drop it onto the base rail. The front and back portal frames should be attached first. A stringline can be run from one end to the other. Using a stringline level you can assemble the shed to your desired fall (front to back, or back to front) for water run-off. A shade shed only requires a slight 2.5-degree fall end to end. Rainwater can be collected using a gutter at the lower end if desired. Once the front and back frames are up, attach the rest making sure they line up with the string line. Don't forget to screw the portal frames onto the base rail pegs.



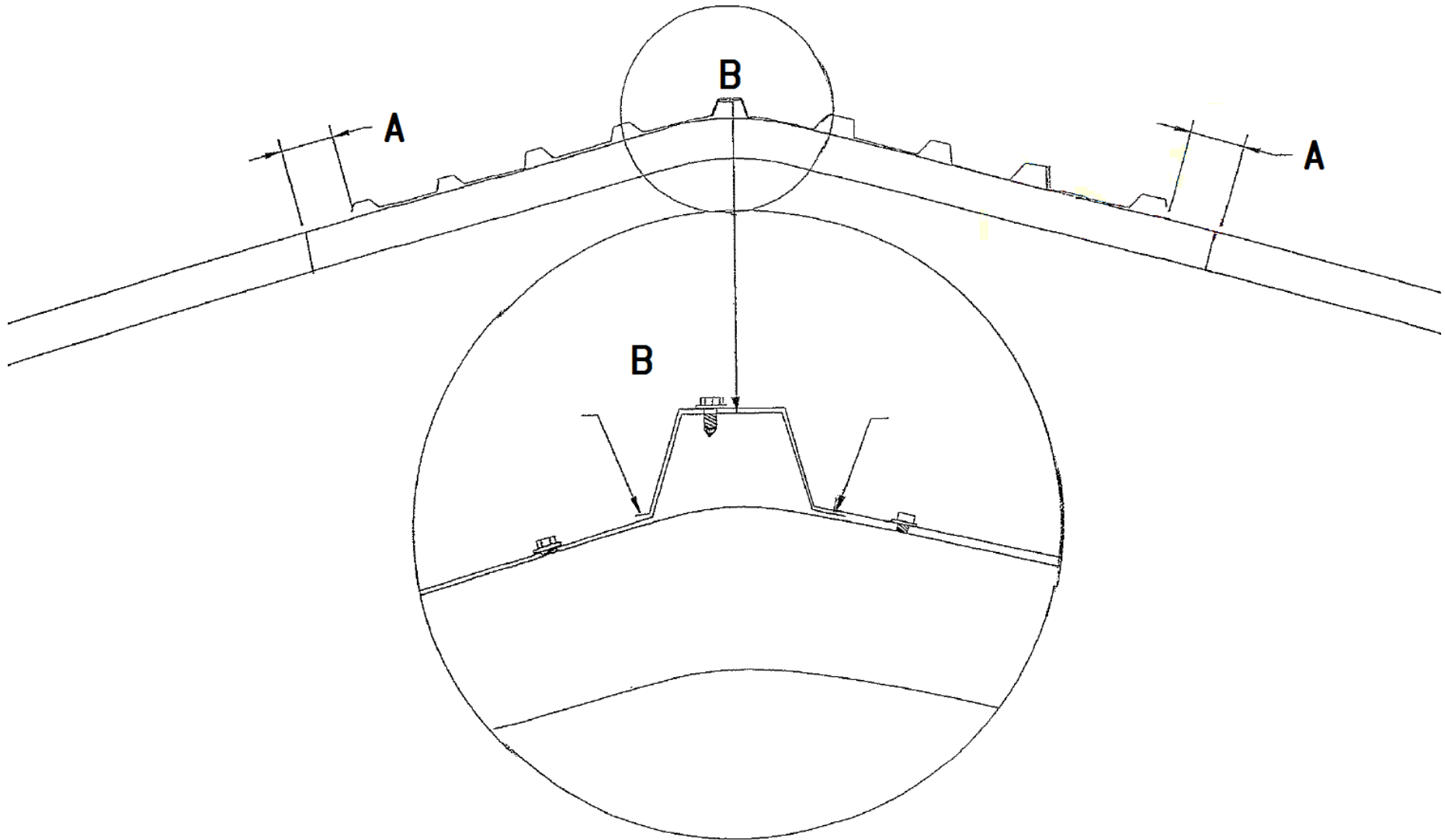
## STEP 4a. Attach the Roof Sheets to the Portal Frames

Starting in the middle, attach the roof sheeting to the portal frames, using the roofing screws provided. Please take note of the diagram in Step 4b, for instructions on the overlap / underlap. Each sheet needs to be fixed to the frame, as well as the sheet that it overlaps. You should use 5 screw per portal frame, per sheet. That is, 4 screws through each sheet, into the portal frame, and 1 screw connecting 2 sheets together, on the overlap.

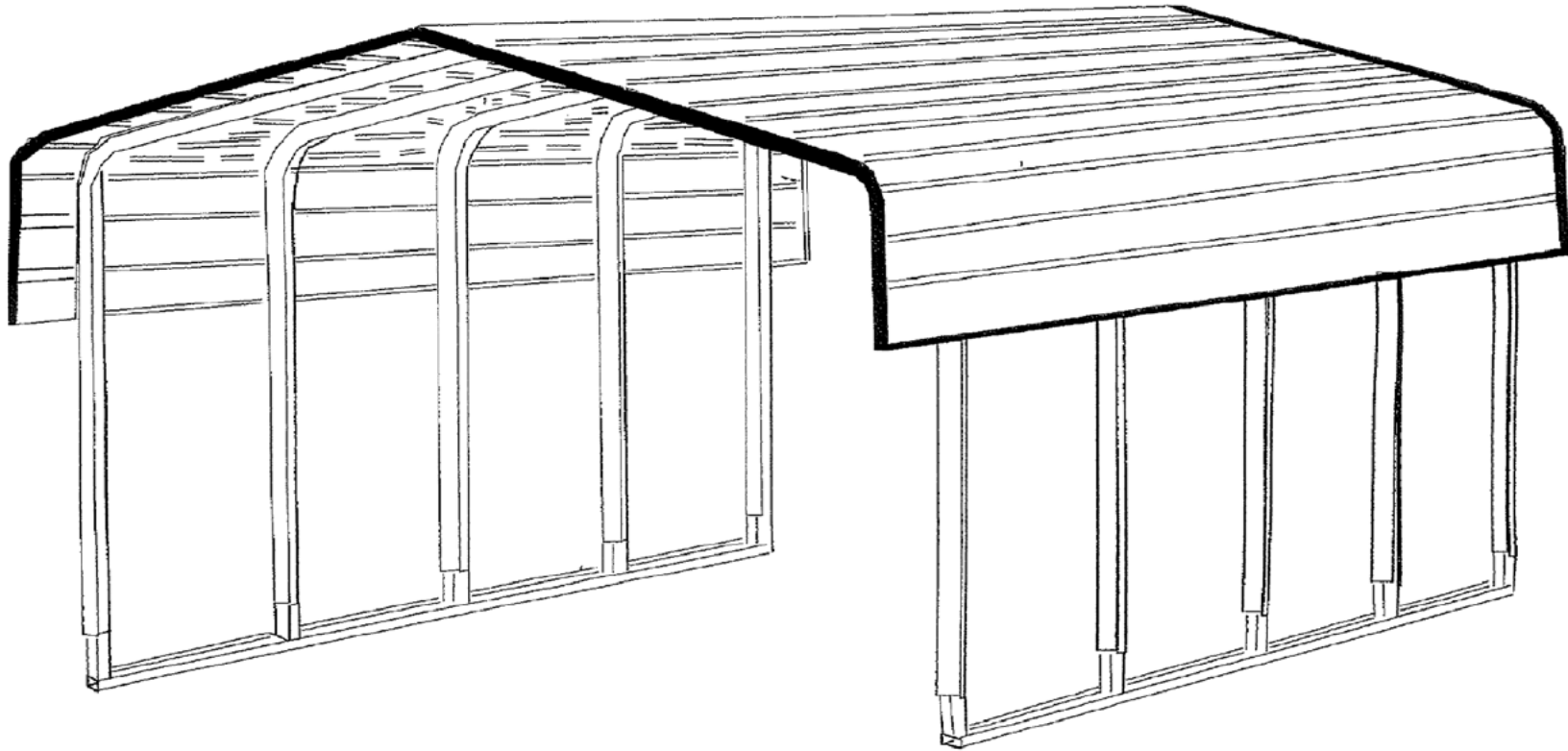


## STEP 4b. Make sure the Overlap / Underlap is correct

When your sheeting arrives, it will generally be packed with all the sheets facing the same way. Take note, that one edge (A) is different to the other edge (B). Therefore, half of the sheets need to be turned around, so that Edge A is always facing the outside of the shed.







Want more information?

Try: [www.carcoversandshelter.com.au](http://www.carcoversandshelter.com.au)

Ph: 1300 851 038