



HAIL ARMOR

INFLATABLE HAIL PROTECTION COVER



SIZES AVAILABLE TO SUIT MOST SEDANS -SMALL TO LARGE, SUV AND MOST 4X4.

SUPPLIED WITH RECHARGEABLE 12 VOLTS ELECTRIC AIR PUMP AND REPAIR KIT.

INFLATABLE HAIL COVER DISCLAIMER

THIS HAIL COVER IS DESIGNED TO PROTECT YOUR VEHICLE FROM BEING DAMAGED BY HAILSTONES.

THE AREAS OF PROTECTIONS INCLUDE BONNET, GUARDS, ROOF, BOOT, AND WINDOWS.

IMPORTANT!! PLEASE ENSURE THAT YOUR VEHICLE HAS COOLED DOWN AND IS “**COMPLETELY CLEAN**” BEFORE THE COVER IS USED. FOR THE EASIER FITTING OF THE COVER ONTO THE VEHICLE, WE RECOMMEND THAT 2 PEOPLE SHOULD CARRY OUT THIS OPERATION.

DO NOT USE THE COVER ON A WET VEHICLE.

NOTE: THE COVER WAS PURPOSELY MADE TO PROTECT FROM AN IMMINENT HAIL EVENT AND IT IS NOT RECOMMENDED TO BE USED AS A PERMANENT CAR COVER. LONG EXTENDED USAGE OF THE COVER WITHOUT REMOVAL FROM THE VEHICLE CAN CAUSE DAMAGE TO THE SPECIAL TPU MATERIAL. DAMAGES CAUSED BY ILL-USAGE OF THE COVER WILL NOT BE COVERED BY A WARRANTY.

WIPE THE COVER CLEAN AFTER USAGE AND REMOVE IT FROM THE VEHICLE. IF THE COVER IS WET ENSURE TO HANG AND DRY IT BEFORE IT IS FOLDED AND STORED IN THE PROVIDED PACKAGING.

AUTOTECNICA IMPORTS CAN NOT GUARANTEE THAT IN EXTREME HAILSTORMS, THE SPECIAL TPU MATERIAL WILL WITHSTAND THE EXTREME FORCES OF SHARP HAILSTONES BUT IT WILL MINIMIZE THEIR IMPACT AND THEREFORE WILL MINIMIZE DAMAGES.

THE COVER HAS A 12-MONTH WARRANTY FROM THE DATE OF PURCHASE, IF USED, ACCORDINGLY, DESCRIBED ABOVE.

FITTING INSTRUCTION:

1 Fit the cover starting from the rear and extending toward the front of the vehicle. Ensure the cover is correctly, evenly, and firmly secured to the vehicle with the security straps attached to the cover. A two-person application would make the fitting of the cover easier.

2 The cover should not be fitted over sharp objects as this will damage the cover and will not be covered by warranty.

3 Inflate each panel with the provided pump using the inlet plugs "2" in each corner on top of the bonnet and 1 on each side panel.

Note: for quick inflation of the cover use the fully open inflate "plug **A**". Some air will escape from the cover when fully inflated in this mode. To further inflate the cover to its maximum use the one-way inflation mode plug **B**. To fully seal the cover once fully inflated use shut off plug **C**.



A. Fully open plug



B. One-way plug



C. Shut off plug

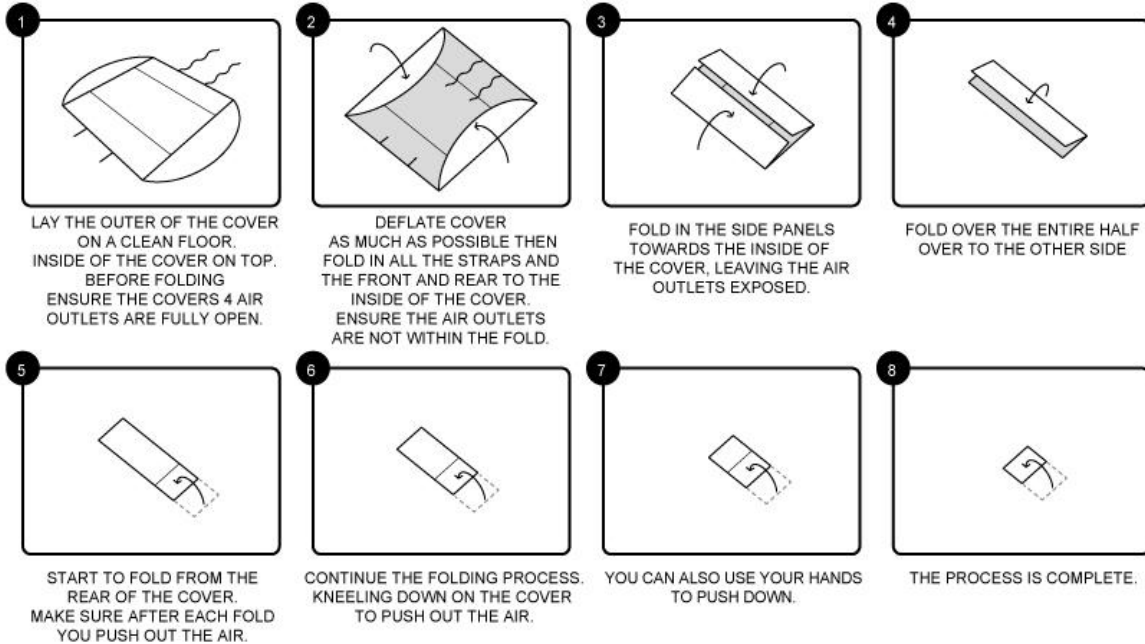
It will take approximately 4 minutes to fully inflate the cover depending on the size of the cover. Inflate the cover to the maximum but do not overinflate. Ensure the 4 inlet valve plugs are fully sealed for the cover to remain inflated. In the event, that there is a minimal air pressure loss, top it up with the provided pump by using the one-way inflation plug "B". Air loss is a natural reaction for this type of material; especially when the covers are new, TPU material becomes soft and stretches. Inflate the cover every few days if there is air loss. **ONLY INFLATE THE COVER WITH THE PROVIDED PUMP.** The pump has 3 different nozzle sizes, use the nozzle suitable to suit the cover.

4 When the cover is on the vehicle ensure that it is always inflated and correctly secured to the vehicle with the provided security straps. **THIS IS OF GREAT IMPORTANCE.**

5 Keep the cover away from fire, clean the cover regularly with soapy water, and ensure the material is dried before packing the product in the provided storage bag. Do not spill petrol or other inflammable fluids onto the cover, as it will affect the materials used.

HOW TO FOLD CAR COVER

ENSURE THE COVER IS CLEAN AND DRY BEFORE STORAGE
NOTE: THIS IS A QUICK STEP BY STEP EXAMPLE YOU MAY NEED MORE FOLDS FOR LARGER SIZE COVERS



NOTE: When folding the cover allow as much room as possible so the cover is fully expanded on a flat clean surface. To deflate you could use the reverse circulation of the air pump by plugging it into each inlet and extracting the air from the cover.

You could also deflate further by opening all the inlet plugs and folding the cover as per the above instruction. This should allow you to fold and store the cover in its storage bag.

7 A vinyl repair kit with special glue has been supplied with each cover in the event the cover needs to be repaired. Ensure to clean the cover in the area affected with a cleaning non-oily or abrasive solution and apply the provided glue to the cover. Once the glue is semi-dry attach the repair patch and let it dry for at least 6 hours before the cover is used.

8 Do not stand, walk, or jump on the inflated cover as this could cause the cover to be damaged. Keep away from children, the cover is to be used as a hail protection cover and not as an everyday day protection cover.

9 A rechargeable electric air pump is provided to inflate and deflate the cover. The side nozzle is for inflation and top nozzle can be used for deflation. Only use this pump for inflation as other high-powered pumps could damage the cover.

The pump is supplied with nozzles to suit the inlets of the cover. 1x 240 volts AC to 12volts DC charger. See the WARNING LABEL below.

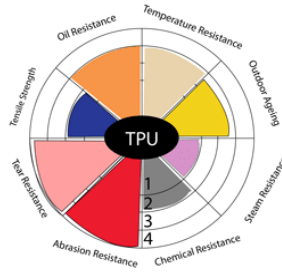
1x12volts car cigar lighter plug adaptor is supplied in case the battery in the pump runs flat.

Do not operate the air pump for more than 10 minutes at a time. The pump shouldn't be operated for 30 minutes after each use. When the pumping ability from the pump is reduced it is time to recharge the batteries. It can take some time for the batteries to be fully charged using the provided 240 volts to 12 volts charger. The charging time will depend on the power still stored in the batteries inside the pump. It could take at least 4 hours to fully charge the pump. Fully charge the pump before usage.

TPU MATERIAL

We have designed and created a TPU (Thermoplastic polyurethane) inflatable hail cover.

TPU is a hybrid material. It is a mixture between hard plastic and soft silicone. This makes a very dense and smooth material that slides over a car without attracting lint and dust.



Durable and long-lasting material with high elasticity and tear resistance and ideal for creating an inflatable cover. The fabric ensures that the cover will not scratch your vehicle's surface when fitting and removing.

It is recommended always best practice to apply the hail cover to a clean, dry and cool vehicle. Ensure the security straps are not pulled across the vehicle as being hard PVC could scratch the vehicle's body.

ARMOUR PROTECTION HAIL COVERS

HAIL1	HAIL ARMOUR SMALL COVER SUITS VEHICLES UP TO 4.2 MT LONG, ROOF WIDTH OF 1.45 MT, AND A HEIGHT OF 1.25 MT. SEE NOTE BELOW.		
HAIL2	HAIL ARMOUR MEDIUM, COVER FITS VEHICLES FROM 4.3 TO 4.6MT LONG, ROOF WIDTH OF 1.45MT, AND A HEIGHT OF 1.25MT. INCLUDING SUV. SEE NOTE BELOW		
HAIL3	HAIL ARMOUR LARGE COVER FITS VEHICLES FROM 4.6. MT TO 4.9 MT LONG, ROOF WIDTH 1.45MT HEIGHT 1.25MT. INCLUDING SUV. SEE NOTE BELOW		
HAIL4	HAIL ARMOUR XLARGE COVER FITS VEHICLES FROM 4.90CM TO 5.27 MT LONG, WITH ROOF WIDTH A OF 1.5 MT, AND A HEIGHT OF 1.30.MT. INCLUDING SUV. SEE NOTE BELOW		
HAIL 5	HAIL ARMOUR LARGE COVER FITS 4WDR & SUV VEHICLES FROM 5.27 MT TO 5.6 MT LONG, ROOF WIDTH 1.55 MT, HEIGHT 1.75MT. SEE NOTES BELOW		
	<p>NOTE: THE ABOVE MEASUREMENTS ARE INTENDED TO CONFIRM WITH THE SIZE OF THE RELATED VEHICLE BUT THE COVERS ARE NOT SPECIFICALLY CUSTOM MANUFACTURED AND FITMENTS TO THE VEHICLES WILL VARY DEPENDING ON EACH DIFFERENT BODY SHAPE.</p> <p>THE COVERS WIDTH ABOVE IS THE MEASUREMENT OF THE VEHICLE ROOF FROM LEFT TO RIGHT. THE COVER UPPER HEIGHT ARE THE VEHICLE MEASUREMENTS FROM THE ROOF EDGE TO THE DOOR SILLS.</p> <p>CAR MANUFACTURERS MEASURE THE WIDTH OF THE VEHICLES FROM SIDE TO SIDE OF THE GUARDS. USUALLY, CAR COVERS FLARE OUT WHEN FITTED TO ALSO COVER THE VEHICLE GUARDS.</p> <p>WHEN THE DEFLATED COVER IS PLACED ONTO THE VEHICLE IT WILL APPEAR TO BE TOO LARGE HOWEVER, ONCE THE COVER IS INFLATED IT WILL ADJUST TO THE SIZES QUOTED ABOVE.</p>		

Charger instructions: MODEL no. HYCH0101550500S

⚠ WARNING MODEL: HYCH0101550500S

- Adult use only.
- Do not drop unit into water or expose unit to rain or water.
- Do not direct air stream at face or body.
- Do not operate for more than 10 minutes at a time. Unplug and let cool at least 10 minutes.
- Unplug unit when not in use.
- Do not obstruct vent holes or open source.
- Do not insert objects into the inflation or deflation connector.
- The AC supply cord cannot be replaced. If the cord is damaged the appliance should be scrapped.
- To reduce the risk of electric shock, do not expose to rain. Store indoors.
- This appliance can be used by children aged from 8 years and above and persons with reduced physical, sensory or mental capabilities or lack of experience and knowledge if they have been given supervision or instruction concerning use of the appliance in a safe way and understand the hazards involved.
- Children shall not play with the appliance. Cleaning and user maintenance shall not be made by children without supervision.

FOLLOW THESE RULES AND ALL INSTRUCTIONS TO AVOID PROPERTY DAMAGE, ELECTRIC SHOCK, BURNS OR OTHER INJURY.

PUMP & ACCESSORIES



Please note: Due to a possible shortage from the manufacturers of the above pump, from time to time, it will be substituted with a similar pump locally purchased. All instructions are included with the supplied product.

AutotecnicA Imports PTY LTD Warranty

The products listed below are guaranteed against defects for 12-36 months (see below) from the date of purchase. This warranty is provided by AutotecnicA Imports PTY LTD (ABN 24 847 451 725) of 48 Northgate Drive, Thomastown, VIC 3074 Phone (03) 9464 2200. AutotecnicA will offer a repair or replacement if the product is assessed as being defective during the warranty period.

To claim under this warranty, take this product to the point of purchase. You will need your receipt or proof of purchase. Additional information may be requested to process your claim.

This product may need to be sent to AutotecnicA to assess the defect before determining any claim. Faults or defects caused by product modification, misuse, and abuse, normal wear, and tear, or failure to follow user instructions are not covered under this warranty.

Our goods come with guarantees that cannot be excluded under the Australian Consumer Law. You are entitled to a replacement or may be entitled to a refund (see a store you purchased from) for a major failure and compensation for any other reasonably foreseeable loss or damage. You are also entitled to have the goods repaired or replaced if the goods fail to be of acceptable quality and do not result in a major failure.

Any expenses incurred relating to the return of this product to the store will have to be paid by the customer. For more information contact AutotecnicA by mail or email.

The benefits to the consumer given by this warranty are in addition to other rights and remedies of the Australian Consumer Law about the goods and services to which this warranty relates.

AutotecnicA Imports PTY LTD Warrants

AUTOTECNICA / MONZA SPORT SEATS (12 months)
MONZA MOUNTING FRAMES (24 months)
GUARDIAN SERIES: SHOW CAR COVER (36 months)
STORMGUARD CAR & MOTORBIKE COVERS (12 months)
EVOLUTION CAR & MOTORBIKE COVERS (12 months)
HAIL PROTECTION COVER (12 months)

From the date of purchase against defects in workmanship and or material. Register your product Warranty at the below email addresses.

Include Part number.....

Date purchased.....

Store Purchased

Mail To:

AutotecnicA Imports PTY LTD
48 Northgate Drive, Thomastown
Melbourne, Victoria, 3074

E-Mail To:

admin@autotecnicA.com.au
sales@autotecnicA.com.au