



IP 50 M Y14
Optional legs with wheels



IP 30 M Y14

IP 30-50 M Y14

meat mixers



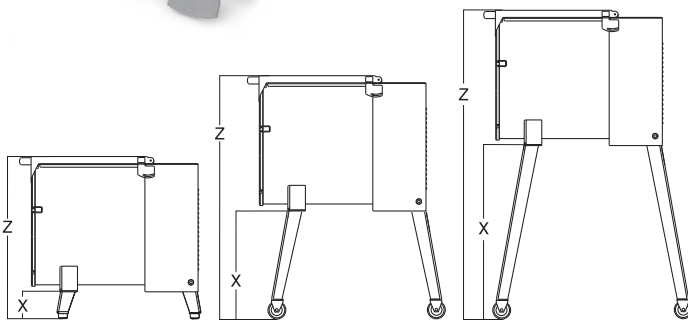
- AISI 304 stainless steel body.
- Powerful.
- Oil bath reducer with hardened and ground helical gears.
- Gear box with double sealing system.
- Safety microswitch on the cover.
- Removable AISI 304 stainless steel mixing arm (no tools required).
- Front outlet opening for shaft removal and product unload.
- Stainless steel IP 67 protection rated controls

Optionals:

- Short, medium, long legs with wheels.
- Feeding tray to add ingredients.



Optional feed tray for add ingredients



Optionals legs

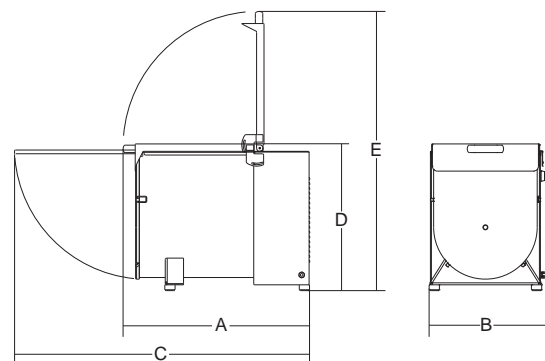
Medium legs + wheels + brake

IP 30 M Y14

X: 440 mm / Z: 940 mm

IP 50 M Y14

X: 440 mm / Z: 1010 mm



	watt/HP		mm	lt/kg	mm	mm	mm	mm	mm	kg	mm	kg
IP 30 M Y14	1ph 1.100/1.5 3ph 1.472/2	1ph/3ph	300x400	42/30	680	365	1120	530	975	49	750x580x800	59
IP 50 M Y14	1ph 1.100/1.5 3ph 1.472/2	1ph/3ph	410x480	88/50	750	465	1250	595	1120	59	850x840x830	74