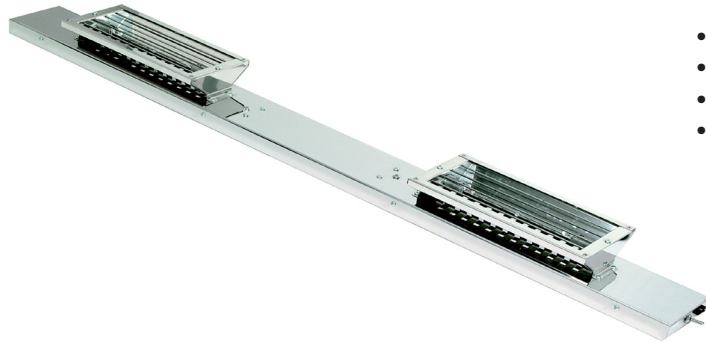


## Heat Lamp Assemblies W.HLAxx

### Product Information:

- Provide optimum heat and lighting to all food preparation and serving areas
- Overhead heating assemblies for pass-through applications
- Includes full stainless steel channel and on/off switch
- Replaceable 300w infra-red lamps wired in parallel
- Not to be used in enclosed gantries

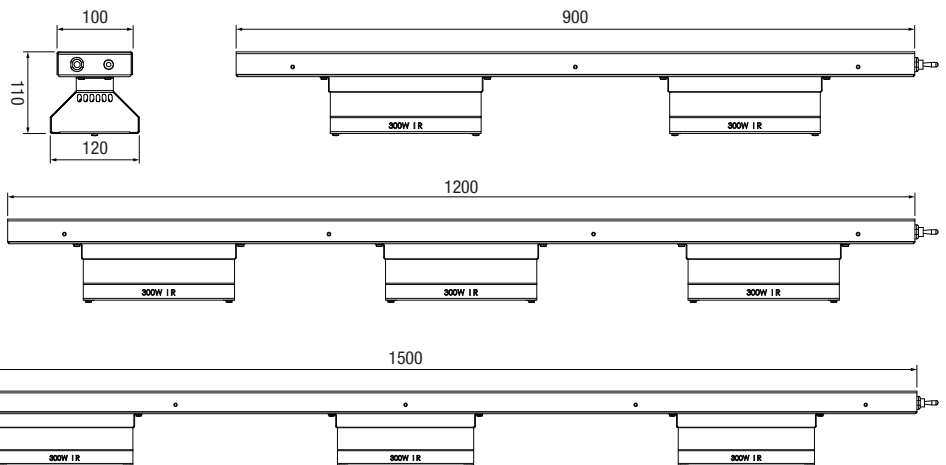


### Specifications

**Model** W.HLA900  
**Height** 110mm  
**Width** 900mm  
**Depth** 120mm  
**Power** 0.6kW  
 10A plug & lead fitted

**Model** W.HLA1200  
**Height** 110mm  
**Width** 1200mm  
**Depth** 120mm  
**Power** 0.9kW  
 10A plug & lead fitted

**Model** W.HLA1500  
**Height** 110mm  
**Width** 1500mm  
**Depth** 120mm  
**Power** 0.9kW  
 10A plug & lead fitted



Due to continuous product research and development, the information contained herein is subject to change without notice.

Revision: A - 31/08/2020

[www.stoddart.com.au](http://www.stoddart.com.au)

[www.stoddart.co.nz](http://www.stoddart.co.nz)