

ALFA420H-2

Family	Ovens
Subfamily	Convection oven 4 trays EN 600x400 mm or GN1/1
Oven type	Fan with humidification
Oven control	Mechanical
Trays capacity	4 trays 600x400 mm - GN1/1
Power supply	400 V 3N~ / 10 A / 6,9 kW / 50 Hz
Other electrical connection	230 V~ / 30 A / 6.9 kW / 50 Hz
Steam generation	Direct
WiFi connection	Not available
Maximum depth with open door	1145 mm
Adjustable feet	Yes
Net weight	61,000 kg
Product dimensions WxDxH	798x747x563 mm



Distribution

Solutions	Bars/Cafes; Hotels; Restaurants/Catering; Bakery/Pastry making; Industrial pastry&bakery laboratories; Butcher's shops; QSR	Suggested for	Bars/Cafes
------------------	--	----------------------	------------

Aesthetics

Colour	Stainless steel	Front panel	Yes
Door with stainless steel stripes	Yes	Logo	Smeg printed

Controls

Timer setting range	1-60 minutes + endless
----------------------------	------------------------

Programs / Functions

Backing functions



Fan forced

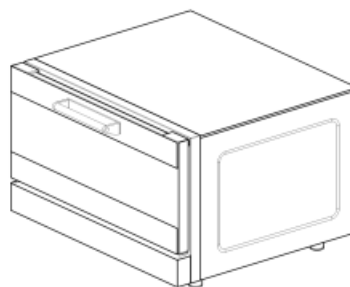
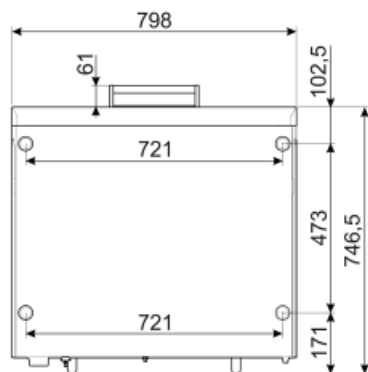
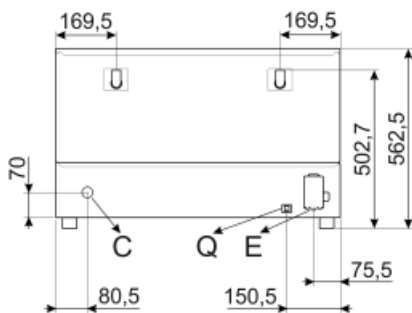


Fan forced with humidification

Options

Construction

Oven materials	Ever Clean enamel	Max standard speed motor rpm	2
Cavity dimensions (lxdxh)	672x437x340mm	Humidification levels	Manual
Gross volume	670x560x420mm	Exhaust position	Back
Net volume	670x560x420mm	Timer type	Electromechanical timer
Internal net volume	670x560x420mm	Temperature range	50-270°C
Cavity material	Stainless steel	End cooking signal	Yes
Shelves number	4	Orange light indicator t° achievement	Yes
Tray frame support	Chrome	Green light indicator t° achievement	Yes
Shelves distance	77 mm	Manual reset safety thermostat	Yes
Door construction	Double glass	Removable deflector	Yes
Door opening	Tilting	Lighting	2 LED lamps
Handle type	Smeg	Light power	40 W
Openable glass	Removable	Water load pipe	Yes
Fan type and number	2 contrarotating fans with time direction reversal	Power cable length	170 cm
Engine speed	Ever Clean enamel	Back panel	Galvanized
Engine speed	Single speed	IPX protection	Scheduled start H/12



Q	MORSETTO EQUIPOTENZIALE EARTH TERMINAL
E	CAVO ALIMENTAZIONE ELETTRICA ELECTRICITY SUPPLY CABLE
C	TUBO DI CARICO (solo su alcuni modelli) FILLER HOSE (on some models only)

Not included accessories



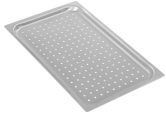
3805

Flat chrome-plated wire grid



3927

Air flow reducer kit



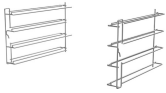
TF11XH2

Perforated aluminium GN1/1 tray for Galileo professional



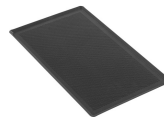
3743

Flat aluminium tray



RGN11-420-2

Support kit for grids or flat trays GN1/1 suitable for ALFA420/425 models



TMF11TH2

GN 1/1 non-sticking microperforated tray

SVRPP625

Conjunction kit for 2 ovens series 625/420 and hood



T11XH20

2cm height aluminium GN1/1 tray for Galileo professional



SVRPP420-625

Connector kit for two stacked ALFA420+420 or ALFA420+625 models and hood



T11XH65

6,5cm height aluminium GN1/1 tray for Galileo professional



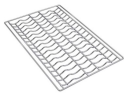
T11TH20

2cm height GN1/1 non-stick tray for Galileo professional



3751

Flat perforated aluminium tray



3810

Corrugated grid for baguettes

SVRPP420

Conjunction kit between 2 ovens series 420/425 and hood



T8S11T

8 holes GN 1/1 non-sticking tray for Galileo professional



T11TH40

4cm height GN1/1 non-stick tray for Galileo professional

Symbols glossary (TT)

