

In gear®

Aug – Sep 2024

SERVICE + REPAIR ESSENTIALS

**COMPREHENSIVE
RANGE**

NORTH AMERICAN | JAPANESE | EUROPEAN
TRUCK AND TRAILER PARTS AND ACCESSORIES



truckline.com.au
1300 487 850

SUPERIOL

Oil Filter

Suits: Isuzu F Series
Interchangeable with P550408, Z705, C-1561.

Part number: 2A2720 **\$23**

Suits: Hino
Interchangeable with Z319, C-1314, WCO1NM.

Part number: 1A2703 **\$31**



RYCO

WHEN YOU NEED MORE THAN A FILTER

BE RYCO READY



Fuel Filter

Suits: Isuzu F and N Series

Interchangeable with FS36243, P502427, R2691P, EF-15080, WCF12NM.

\$22

Part number: 2A1910

Air Filter

Suits: Isuzu N Series

Interchangeable with AF27693, P543614, A1377, FA-6020M, WA1031.

\$51

Part number: 2A4617

NEW VEHICLE WARRANTY PROTECTED

Ryco Filters are designed, engineered and carefully tested to SAE and ISO industry standards in Australia's only dedicated filtration laboratory to meet or exceed OE specifications of Efficiency, Life and Flow. When a truck is serviced utilising Ryco Filters, you can be assured the New Vehicle Warranty is protected.

RANGE AND COVERAGE

Ryco's Commercial Filter range includes oil, fuel, air, coolant, crankcase, cabin air, AdBlue urea filters, transmission and Service Kits for a large range of popular North American, European and Japanese trucks.



Fuel Filter

Suits: Hino 2008-ON, Nissan UD 2008-ON

Interchangeable with Hino: 23304-EV030, 23304-JAB00, S23401-1682. Nissan: 16444-Z500C.

\$17

Part number: EF-1802

Gas/Breather Filter

Suits: Isuzu / Mitsubishi

Interchangeable with Isuzu: 8-97606318-0. Mitsubishi: ME302763.

\$25

Part number: EFG-1002

Filter Service Kit

Suits: Hino 500 & UD MK/PK Series

Engines: J08E
Kit Includes:
Z779 Spin On Oil Filter
R2692P Cartridge Fuel Filter
R2693P Cartridge Fuel Filter

\$69

Part number: RSK118



Filter Service Kit

Suits: Isuzu F & G-Series

Engines: 6ZU1
Kit Includes:
R2757P Cartridge Oil Filter
R2758P Cartridge Oil Filter
R2644P Cartridge Fuel Filter
R2769P Cartridge Fuel Filter

\$109

Part number: RSK136



Filter Service Kit

Suits: UD CONDOR/MK /PK

Engines: GH7
Kit Includes:
Z961 Spin On Oil Filter
R2761P Cartridge Fuel Filter
R2762P Cartridge Fuel Filter

\$119

Part number: RSK146



Filter Service Kit

Suits: Mack/UD/Volvo

Engines: MP8/GH11/ D11/13/16 Euro5
Kit Includes:
Z878 Spin On Oil Filter
Z963 Spin On Fuel Filter
Z962 Spin On Oil Filter (x2)
Z1022 Fuel/Water Filter

\$169

Part number: RSK144





TESTING THE LIMITS OF FILTRATION SCIENCE TO KEEP YOU GOING.

All Fleetguard products are designed to meet or exceed OEM specifications. The Fleetguard Global Warranty program offers unrivalled, comprehensive and non pro-rated warranty coverage.

Go with Fleetguard to protect your asset.

Fuel Filter

Suits: Komatsu Dozer, Dump Trucks, Excavator & Loader

\$67

Part number: P553500



Fuel Filter

Suits: Cummins QSK19, QSK38, QSK50, QSK60

\$139

Part number: DBF5782



Oil Filter

Suits: Cummins & Komatsu Engines

\$79

Part number: P559000



Oil Filter

Suits: MTU 12V4000

\$129

Part number: P550512



Air Filter

Suits: Hino J05E, Isuzu 6WG1X, and Komatsu SAA6D170E

\$87

Part number: P812559



Service Kit

Suits: Volvo FK18, FM9, FM11, FM13, FH12, FH13, FH16

\$169

Part number: X903273



Oil Filter

Suits: Cummins ISXe5/X15

\$65

Part Number: LF14000NN



Oil Filter

Suits: Cummins ISC, ISL, and ISLe5

\$71

Part Number: LF9039



Fuel Filter

Fuel Pro FH230 Series 10 micron.

\$43

Part Number: FS19764



Air Filter

Suits: Kenworth and Mack

\$98

Part Number: AF1968M

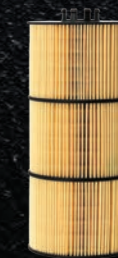


Oil Filter

Suits: Detroit DD15

\$69

Part Number: LF17511



Fuel Filter

Suits: Detroit DD15

\$125

Part Number: FK13850NN



Fuel Filter

Fuel Pro FH230 Series 7 micron.

\$37

Part Number: FS19763



Air Filter

Suits: Kenworth and Mack

\$136

Part Number: AF1969M





WOULD YOU LIKE OIL WITH THAT?



AUSTRALIAN MADE FOR HEAVY DUTY

FOR HEAVY DUTY DIESEL APPLICATIONS

HYDRAULIC OILS

ENGINE OILS



Hydraulic 68
200L

\$720

Part number: 5279200



Hydraulic 46
200L

\$720

Part number: 5278200



Haul 15W-40 CJ-4
200L

\$999

Part number: 5261200



Haul 15W-40 CK-4
200L

\$1,099

Part number: 5260200



Convoy DCJ
15W-40 CJ-4
20L

\$125

Part number: DCJ020

205L

\$1,240

Part number: DCJ205



Convoy DHD
15W-40 CJ-4
20L

\$135

Part number: DHD020

205L

\$1,330

Part number: DHD205



WOULD YOU LIKE



A GIFT CARD WITH THAT?



Scan to redeem

Get a \$50 Bunnings gift card with every Castrol 205L drum purchased*



RX Super 15W-40
CJ-4/E9 205L

\$1,300

Part number: 3418279CA



Vecton 15W-40
CK-4/E9 205L AZ

\$1,400

Part number: 3413004CA



Trans Axle AP
85W-140 205L

\$1,600

Part number: 3430303CA



Trans Dynadrive LL
80W90 205L

\$2,600

Part number: 3430284CA

The Castrol Oil Drum Gift Card Promotion is valid from 1 August to 30 September 2024 and applies exclusively to Castrol oil drum products featured in the Ingear August-September catalogue. For each eligible Castrol oil drum purchased you will receive a \$50 gift card. The offer is valid only for purchases made at the advertised price and cannot be combined with any other trade discounts. To receive your gift card, you must provide your email address.

NARVA®

THE VISION TO GO FURTHER

TRANSPORT ESSENTIALS

Narva products are designed, engineered and tested in Australia to endure the country's harsh climates. Trusted in the commercial vehicle industry, Narva ensures reliable performance, safety and durability in demanding conditions.

TRAILER CONNECTORS



7 Pin Large Round Metal Plug	82161NA	\$10
7 Pin Large Round Trailer Socket	82062NA	\$15
7 Pin Large HD Trailer Plug with Spring	82194NA	\$45
7 Pin EBS Plug 12/24V	82196NA	\$65

DRIVING LIGHTS & HEADLIGHTS



7" Steel Headlamp Bucket Closed Back
\$149

Part number: 72193NA

7" LED Hi/Lo Headlight Insert
\$529

Part number: 72104NA

REAR COMBINATION LAMPS

Model 42 LED Rear Stop/Tail/Indicator Lamp	94202NA	\$120
Model 42 LED Rear Stop/Tail/Indicator/ Rev Lamp	94210NA	\$150
Model 48 LED Rear Direction and Twin Stop/Tail Lamp	94850NA	\$215
Model 48 LED Rear Stop/Tail/Indicator Lamp Horizontal Mount	94856HNA	\$229



SUZI COILS



7 Core 4mm Suzi Coil 4.6m
\$120

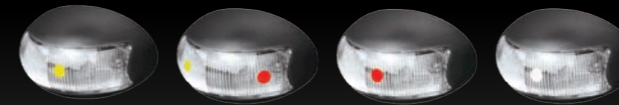
Part number: 82524NA



7 Core EBS Suzi Coil 4.5M
\$220

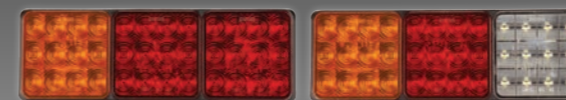
Part number: 82560NA

ROADVISION DOMINATE THE NIGHT



BR3 SERIES LED CLEARANCE LIGHTS

BR3A - AMBER	\$19
BR3ARL - AMBER/RED (2.5M CABLE)	\$20
BR3A - RED	\$15
BR3W - WHITE	\$17
BR3ARB10 - AMBER/RED 10 PACK	\$150



LED REAR COMBINATION LAMP
10-30V Stop/Tail/Ind Surface Mount 282x92mm

BR82ARR - WITHOUT REVERSE	\$79
BR82ARW - WITH REVERSE	\$89



LED REAR COMBINATION LAMP
10-30V Stop/Tail/Ind/Rev Jumbo Triple Surface Mount 604x132mm

BR601ARR - WITHOUT REVERSE	\$155
BR601ARW - WITH REVERSE	\$167

LED CLEARANCE LIGHT
10-30V Lens 56x31x22mm Fixed and Self-Adhesive Mounts

BR7A - AMBER	\$15 Each
BR7AR - RED/AMBER	
BR7R - RED	
BR7W - WHITE	



LED LICENSE PLATE LAMP
10-30V Surface Mount Black Body

\$17
Part number: BR55B



DURALED TAIL LAMP COMBI-S 12/24V

\$149

Part number: 2VP015074001HE

BUILT TO LAST

DURALED

FIT & FORGET

Expertly designed and precision manufactured

RELIABILITY

Continuous improvement & strenuous testing for an ultra long operating life.

MOUNTING BUSH

Easy to mount on uneven surfaces.

CONNECTION

Cable or DT option.

GRILAMID® LENS

Toughness against impact. UV & chemical resistant. Will not fade or embrittle.

REFLECTOR

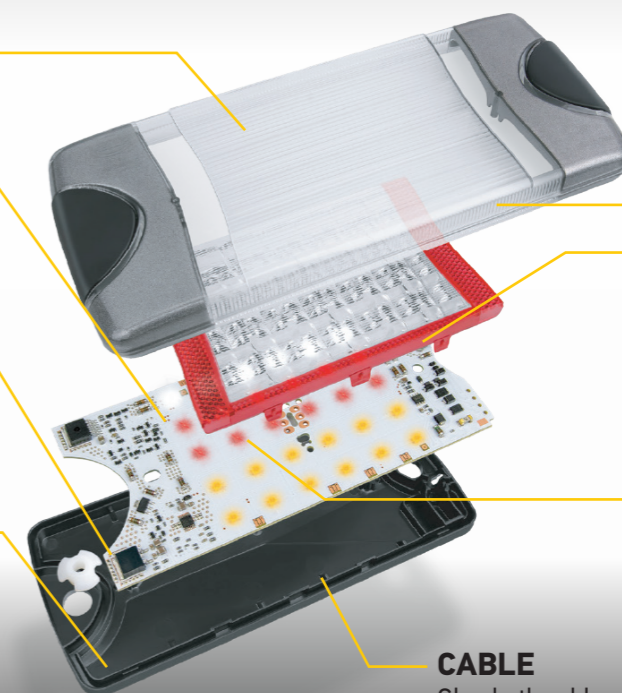
Inbuilt retro reflector beneath the outer lens.

LEDS

High quality LEDs & the latest electronic technology.

CABLE

Glue bath cable entry IP 6K7, IP 6K9K

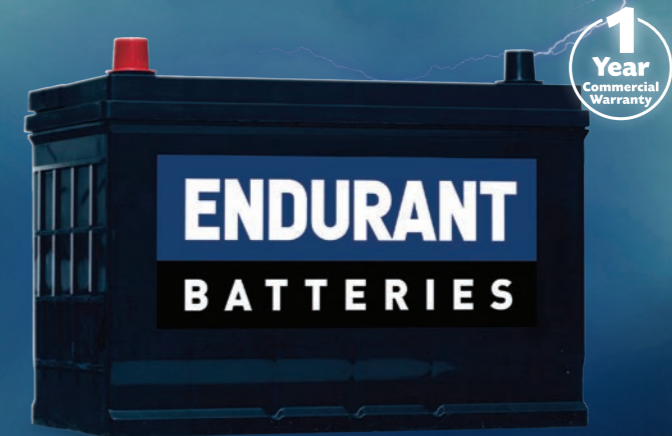


YOUR BATTERY POWERHOUSE



Meets all original criteria of the commercial vehicle manufacturer.

VARTA® is the number one choice by vehicle manufacturers, selected for reliable performance and a very low fail rate. Designed for heavy commercial vehicles with high energy demands, VARTA saves you money on total cost of ownership.



1 Year Commercial Warranty



2 Year Commercial Warranty

Promotive Super Heavy Duty 12V 780CCA \$220

Part Number: G27 / G27L
Suits: Kenworth, Mack, Iveco, 4WD



2 Year Commercial Warranty

Promotive Silver 12V 1000CCA \$599

Part Number: M18
Suits: Volvo, Scania, Daimler, Mercedes Benz, DAF



2 Year Commercial Warranty

Promotive Silver 12V 1000CCA \$649

Part Number: C40
Suits: Mercedes-Benz, Volvo, Scania, MAN, DAF



2 Year Commercial Warranty

Promotive Silver 12V 1150CCA \$689

Part Number: N9
Suits: Volvo, Scania, Daimler, Mercedes Benz, DAF

- 2 year commercial warranty
- Up to 3 times the cycle life compared to conventional batteries
- Original Equipment battery for well known brands
- EFB and AGM models have the highest vibration resistance, perfect for end of frame installation (EURO 5 / 6)

Load Master 12V 750CCA

Part Number: N70ZZMFHD-E / N70ZZLMFHD-E
Suits: Kenworth, Mack, Iveco, 4WD

\$169

Load Master 12V 800CCA

Part Number: N120MF-E / N120LMF-E
Suits: Hino, U.D., Scania

\$289

Load Master 12V 1050CCA

Part Number: N150MF-E
Suits: DAF, Isuzu, Iveco, MAN, Mercedes-Benz, Volvo, Scania, U.D.

\$329

Load Master 12V 1200CCA

Part Number: N200MF-E
Suits: DAF, Isuzu, Iveco, MAN, Mercedes-Benz, Volvo, Scania, U.D.

\$399



1 Year Commercial Warranty

ONmech N70 12V 650CCA

Part Number: N70ZZLMF-V / N70ZZMF-V
Suits: Kenworth, Mack, Iveco, 4WD

EVERYDAY \$121 VALUE

GME

TX4500S UHF CB Radio

DIN Size UHF B Radio with Scan Suite

\$500

Part number: TX4500S



PHILIPS

**7 Core Suzi Coil Adaptor
4.6m with 1.2m Tail and
Metal Plugs**

\$165

Part number: 24-4921-ADP



**Adaptor Lead
- 7 Pin To 7 Pin
- Metal Plug**

\$159

Part number: 16-720ADP



**MITSUBISHI
ELECTRIC**

**Starter Motor Mitsubishi
12V 5.5kW 11T CW 56mm**

Suits: Kenworth, CAT C9 C10
C12 C15 Cummins ISX, ISM and N14.

\$660

Part number: PCA1479



**Starter Motor Mitsubishi
12V 5.5kW 12T CW 46mm**

Suits: Mack MP10.

\$842

Part number: MKA1978



**Starter Motor Mitsubishi
12V 5.5kW 12T CW 44mm**

Suits: Mercedes, Freightliner Detroit
Mod3 DD13, DD15D, DD16 <2016.

\$880

Part number: FLA0189



CHICANE

**LIFETIME
WARRANTY**

**Torx Hex Key Wrench Set
- 9 Pieces**

Professional hex key set. S2 chrome plated,
powder coated steel. Sizes T10, T15, T20,
T25, T27, T30, T40, T45, T50.
Set exceeds ANSI standards.

\$35

Part number: CH4017



**Metric Ratchet
Spanner Set - 8 Pieces**

72 tooth ratchet spanners. Includes
8,10,12,13,14,15,17,19mm sizes.

\$105

Part number: CH6026



**3/8" DR Metric Hex Bits
Socket Set**

Professional in-hex socket set.
Set contents: 3, 4, 5, 6, 7, 8, 9, 10, 12mm.
Steel socket rail. CR-V steel socket with S2
steel insert bit.
Set exceeds ANSI standards.

\$35

Part number: CH4020



Professional Pry Bar Set - 4 Pieces

S2 chrome plated and powder coated steel.

\$105

Part number: CH5001



**3/4" DR Metric Deep Impact
Socket Set - 8 Pieces**

Set exceeds ANSI standards.

\$195

Part number: CH1134



COOLANTS

SUPERIOR

**UNBEATABLE
PRICING!**



**Long Life
Premix 20L**

\$86

Part number: SPMC20L



**Long Life Organic
Premix 20L**

\$90

Part number: SRPMC20L



**Ultra PG
Premix 20L**

\$94

Part number: SUPGPMC20L



**Ultimate PG
Premix 20L**

\$100

Part number: SULTPMC20L



**Samoa 450g 20V Lithium-ion
Cordless Grease Gun**

Includes 2 x 2.0Ah batteries, battery charger,
1.1m long flex with protective steel spring,
built in grease coupler holster and built in LED light.

\$800

Part number: 630A



**Samoa 20kg Grease Kit
with Carry Handle**

- 55:1 ratio air motor develops grease pressures of up to 7,950psi (548bar)
- Delivers up to 0.9kg per minute
- 70mm diameter air motor with 35mm stroke
- Kit comprises a 55:1 ratio pump, drum cover, follower plate, carry handle, 4m hose, Z swivel and control valve with 3 jaw coupler.

\$1,175

Part number: 424170



Piusi Diesel Electric Pump Kit

Includes:
• 4m x 3/4" anti static fuel outlet hose
• 2 metres of electric cable and clamps
• Flow rates: up to 50LPM free flow
• 30 minute duty cycle

(No downtube or suction hose included; cut 4m hose as required).

12V Part number: 52000 **\$495**

24V Part number: 52001A **\$800**



S Series Air Hose Reel

Includes:
• New hybrid polymer hose is more flexible, easier to handle and longer lasting
• Working pressure of 300psi (20bar)
• 3/8" BSPT(f) inlet and outlet for 10mm x 18m
• 1/2" BSPT(f) inlet and outlet for 12mm x 15m

10mm x 18m Part number: SA300N **\$325**

12mm x 15m Part number: SA400N **\$330**





20,000kg Hydraulic Bottle Jack

\$250

Part number: MH20



Vehicle Support Stand

Working Load Limit: 10,000kg
Pin style locking device with safety chain where applicable.
One piece base for stability. Heavy duty welded construction.
Auxiliary wheels for ease of mobility where applicable.
Rated as a single stand, for use in pairs. Fabricated in Australia. All models tested to Australian Standard AS 2538:2016.

\$1,585

Part number: RV510



Flexigun® 450g Grease Gun

- Delivery pressure up to 68,900kPa (10,000psi).
- Flexible 300mm high pressure extension hose.
- KY SUPERGRIP™ 3 jaw high pressure coupler.
- Up to 0.68g per shot. Heavy-duty 1.6mm thick barrel.
- Maximum viscosity - Up to NLGI 2.



\$140

Part number: K29.01

Retracta R3 Compressed Air/Water Reel

Hose Size - 3/8"x 20m.
Hose Type - Compressed Air/Water.
Inlet/Outlet - 3/8"/1/4" BSP.
Pressure Rating - 250psi.
Hose Material - Reinforced PVC.



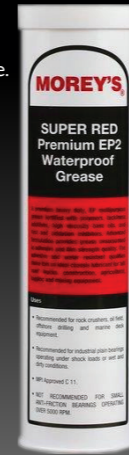
\$365

Part number: AW320B-01



Super Red grease 450g cartridge

A premium tacky-adhesive multipurpose.



\$17

Part number: MOR-42004-SR



Multi-Purpose Lubricant/Penetrant - 300g Aerosol

\$14

Part number: MPX0300



Electrical Grade Lubricant - 300g Aerosol

\$20

Part number: EGX0300



Heavy Duty Liquid Lanolin - 300g Aerosol

\$21

Part number: HDPP0300



RL18 20L Superblue Truck Wash

\$102

Part number: RL18-20L



Shock Treatment Degreaser 20L

\$112

Part number: STR-20L



90 Minute Gasket Maker- 85g

Black \$27
Part number: PX25228

Grey \$29
Part number: PX34328

Red \$31
Part number: PX34628



INTRODUCING

LAVOR
SIMPLY STRONGER



HYPER C 1211 Pressure Washer

The LAVOR HYPERC1211 cold water pressure washer is a machine which forms part of our "Elite" Heavy Duty "HYPER" range. This pressure washer comes equipped with a 3000W induction electric 240V motor running at 1450 RPM. As a result, it delivers a huge 11.2 litres of water per minute at 1800 PSI.

- Industrial Gun
- Industrial Spray Lance (Brass Connections)
- Brass Pump Head
- 10 Metre High Pressure Hose
- Adjustable Pressure
- Automatic Shutdown System (ASS)
- Hardy Steel Base and Frame with Rubber Wheel

\$2,890

Part number: 36082-00077

SCL50B Scrubber Dryer

The SCRUBBER/DRYER SCL50B scrubber dryer is a battery powered floor cleaning machine. It has a scrubbing width of 500MM and a squeegee width of 800MM, with a total cleaning area of around 2000 square metres per hour.

- Control Panel with Operator Presence Bar
- Low Level Battery Indicator
- Quick Drain and Inspectable Recovery Tank
- Adjustable Squeegee Pressure
- Non-Marking Wheels
- 240V On-Board Battery Charger
- Powered by 2 x 12V batteries (24V)
- Quick Lock/Unlock Tool Free Brush
- Solenoid Fluid Release/Drop/Feed

\$5,890

Part number: 37031-00001

TUFF

Brake Cleaner Aerosol - 400g

\$8

Part number: LH51.400



Glass Cleaner - 1L

\$9

Part number: LH46RTU.1



Vinyl Reviver - 1L

\$10

Part number: LH32.1



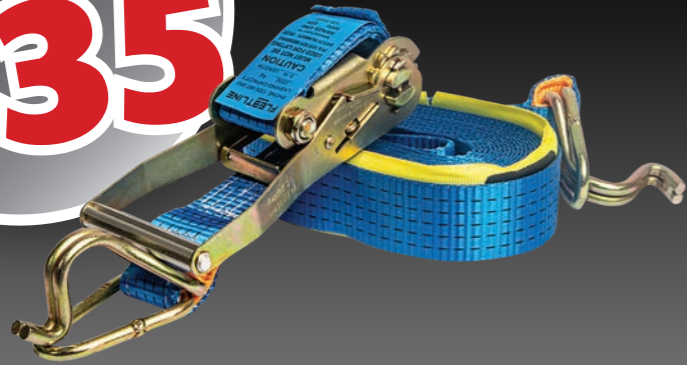
Brake Cleaner Solvent - 20L

\$70

Part number: LH55.20



**STOCK UP DEAL
10 FOR
\$135**



**Hand Ratchet Assembly (Push Up)
50mm x 9m**

Or \$22 each

Part number: 120.0002



Lower Curtain Strap, Grey with J-Hook 780mm

\$12

Part number: 120.0018



Pan 19 Disc Pad Kit

\$270

Part number: 3057008002

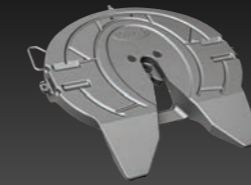


Intra Shock Absorber

Used on SAF suspensions.

\$270

Part number: 2376507000

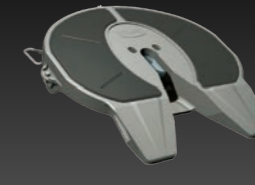


Grease Fifth Wheel - 210kN

Model-FW351.

\$2,385

Part number: XA351EA



Low Lube Fifth Wheel - 210kN

Model-FW331.

\$2,550

Part number: XA331EA



Repair Kit Locking Device

Locking Mechanism Jaw and Greasline, JSK37.



\$237

Part number: SK322152Z

Wear Ring Kit

Greaseless Wear Ring Kit Suit JSK37.



\$244

Part number: SK310594

Foot Bush Kit (CZ)

To suit 37 CW.



\$336

Part number: SK212169Z

Fifth Wheel Coupling 2"

5W37C, Cast, Z-LINE, Long Handle.

\$2,732

Part number: JSK37C-DQGE



Fifth Wheel Coupling 2"

5W37C, cast, low maintenance, lubetronic, long handle, with inserts.

\$3,660

Part number: JSK37C.D6GF

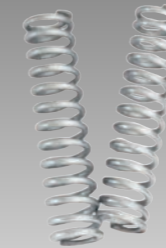


Minor Repair Kit

Pin, Lifter & Springs, 50mm Suits Ringfeder 101AUS, 202AUS.

\$290

Part number: TCK1017



S Cam Tube 526mm

Suits 17.575 & 17.574.

\$36

Part number: 31.1402

Camshaft 11/2" X 10 Spline

Length: 595mm

Suits: Common GP Trailer Axles.

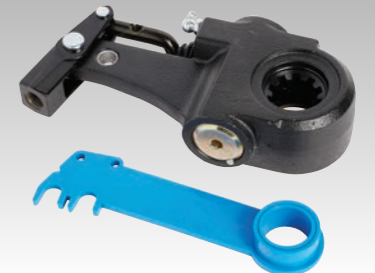
Right Hand Part number: 17.574 **\$71**

Left Hand Part number: 17.575 **\$71**

Auto Slack Adjuster 1 1/2" X 10 Spline 2 Hole 5 1/2", 6 1/2"

\$91

Part number: 10.21102B



Anti-Kink Suzi Coil Set 1/2"

- Reinforced double wall construction, UV stabilised, Australian made.
- New Anti-kink range conforms to DIN 74323, 74324 and ISO 7375A1.



\$102

Short Tail - 6".

Part number: ABC78020AK



\$115

Long Tail - 40".

Part number: ABC78060AK

Pressure Protection Valve - PR2 Style

65PSI Adjustable.

\$75

Part number: 277147 (AIMS)



HVAC Blower Fan and Motor

Suits: Kenworth K108 2017 > and T909.

\$152

Part number: A11-0851



Sanden A/C Compressor

SD7H15 Model 4069. 12V. Direct mount 8PV clutch type. Suits Kenworth and Sterling. Diameter: 119mm

\$469

Part number: A10-8083



Receiver Drier

Receiver drier suits Kenworth C, K, T, W Series Height: 253mm, Diameter: 77mm, Inlet Style: 6 FOR, Outlet Style: 6 MIOR

\$58

Part number: A05-0383GQ



Stainless Steel Offset Chassis Pipe

Lelox chassis pipes offer low weight and high performance. Made in Australia, they feature a marine grade aluminium boss cast directly onto a 304 grade stainless steel tube. This design ensures durability and strength. Lelox chassis pipes are the strongest available, providing a robust connection between mudguards and trucks/trailers.



\$97

Part number: OSCPSS



Taper Roller Bearing

- Outer bearing suits various BPW axles, Eco, Eco Maxx, Eco Plus Part number: 33213/VA6481 **\$56**
- Inner bearing suits various BPW axles, Eco, Eco Maxx, Eco Plus Part number: 33118A/VA6482 **\$66**



TIMKEN

Rear Drive Wheel Bearing

Suits: Hino, Isuzu Fuso, UD

Part number: 32213MTI **\$44**

Part number: 32215TI **\$53**

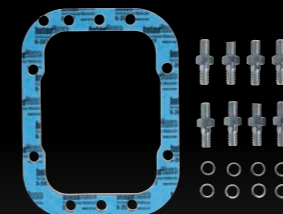


HYDRECO

Mounting Kit for an 8 Bolt PTO

\$48

Part number: MK081



PTO and Hoist Control Kit

\$338

Part number: CK90A



Heavy Duty 8 Bolt Airshift Power Take-Off (PTO)

\$1,011

Part number: PA851BL11A08



ENGINE



4" CAC Connector Hose

6" long Part number: 367.400.060 **\$59**

7" long Part number: 367.400.070 **\$77**

8" long Part number: 367.400.080 **\$106**



Heavy Duty Spring Loaded Clamp to suit 4" CAC hoses

\$24

Part number: 848-66



SUSPENSION



Monroe Trailer Shock

Suits: Hendrickson RFS AA, HT Intraax OE Part # 21699



\$125

Part number: F5479



ROADSAFE HD

Air Spring

Suits: D30K Part number: 70.0007 **\$129**

Suits: Scania Rear Suspension Part number: 70.0062 **\$190**

Suits: HT300U Part number: 70.0040 **\$214**

Suits: Late Airglide 200 Part number: 70.0004 **\$214**



Image for reference only.

POWERDOWN

Shock Absorbers

Suits: Hendrickson HAS Part number: P42013 **\$86**

Suits: Freightliner Part number: P844 **\$108**

Suits: Fuwa, Meritor ROR, TMC, York Part number: P184 **\$108**

Suits: Hendrickson, Neway, Reycos Part number: P161 **\$134**



Image for reference only.

STEERING



Sentinel ESP Plus Hub Cap Plug

Extended Service Plug (Twin Pack). Easy to retrofit to STD STEMCO Hub Caps. A second O-ring increases plug retention. Prevents dirt and water from contaminating the oil.

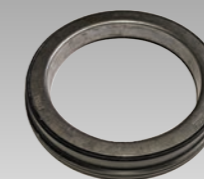


\$60

Part number: 359.6124

Guardian HP Hub Seal

Suits drive axle. High performance drive axle hub seal. Single-step, error-proof installation. Spindle installed seal with in-built axle ring.



\$62

Part number: 309.0973

QWIK Kit Spiral Bush King Pin Kit

Suits MFS66 Axle (Screw Cap 9" Pin Length).



\$573

Part number: K131R

DRIVELINE



REGULATOR VALVE



\$94

Part number: A4740FU

SPLITTER VALVE



\$164

Part number: K3331FU

SLAVE VALVE



\$183

Part number: A5000FU

18 SPEED CONTROL KNOB



\$214

Part number: A7318FU



**MONTHS
INTEREST FREE**

**WORKSHOP
ESSENTIALS**

**Spend \$20,000 inc. GST
or more on eligible equipment from
Jaltest, Rotary or Hunter and get
12 months interest free!^**



**HUNTER
Engineering Company**

Truckline 12 Months Interest-Free Promotion: Offer available until 30 September 2024. Eligible customers who spend \$20,000 or more (including GST) on equipment from Jaltest, Rotary, and Hunter can enjoy a 12-month interest-free period from the date of purchase. If you purchase the latest Jaltest unit along with a Panasonic Toughbook, this qualifies for 12 months interest-free. Purchase of the MC62 column lift (typically bought in pairs) also qualifies for 12 months interest-free. Payments must be made in 12 equal monthly instalments. The promotion is subject to credit approval and product availability. Visit truckline.com.au for more details on the offer. Full terms and conditions are available at truckline.com.au/terms-and-conditions



Store Locator



WANO
JAPANESE TRUCK PARTS

Please visit our website for branch location details and to check stock availability, as it may vary per store. To avoid disappointment, we recommend calling ahead before visiting. Our sale runs from 1 August to 30 September 2024, while stocks last. While we strive to ensure advertised stock availability, not all products may be available at all stores due to factors beyond our control. We will make every reasonable effort to maintain stocks but cannot be held responsible for unforeseen shortfalls. Freight charges may apply to remote locations. All prices include GST. We reserve the right to correct printing errors. Sizes shown are approximate, and accessories depicted are not included unless specified. Please note that colours in the catalogue may slightly vary from the actual item due to printing processes.