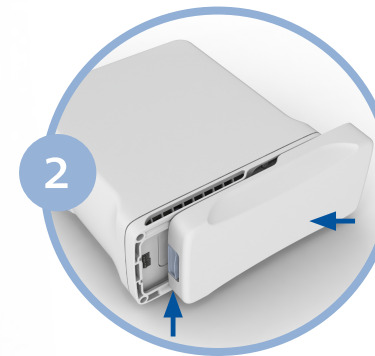


OxyGo FIT™

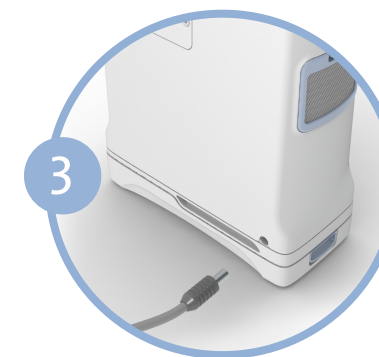
Now that you have unpacked each box, you have everything you need to start using your OxyGo FIT™ (PN 1400-2000). The set-up of your OxyGo FIT™ is quick and simple. However, before using the OxyGo FIT™, please read the entire User Manual.



Place your OxyGo FIT™ in a well ventilated location. Ensure the particle filter is in place.



Insert the OxyGo FIT™ battery by sliding battery into place until the latch returns to the upper position.



Connect the AC input plug to the power supply, connect the power output plug to the OxyGo FIT™.




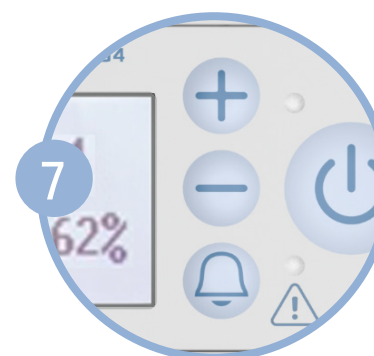
Plug the power supply AC cord into the nearest electrical outlet.



Connect the nasal cannula tubing into the metal nozzle on your OxyGo FIT™. Oxygen will only be delivered while you are breathing through the nasal cannula connected to the device.



Turn on the OxyGo FIT™ by pressing the  on/off button.



Set the flow setting to the flow rate prescribed by your clinical professional. The flow setting can be changed by pressing the circular flow setting buttons that are marked with “+” and “-” symbols. Position the nasal cannula on your face and breathe normally through your nose.

NOTE: You must operate the OxyGo FIT™ on AC Power for approximately 3 hours to fully charge the single battery.