

Motif Twist Quick Guide

1. Buttons & Features



On/Off



30 Min. Timer



Min. Power



Max Power



Expression Mode



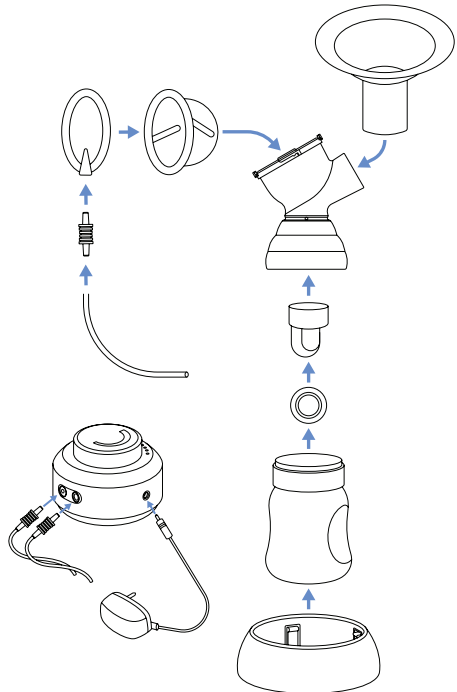
Massage Mode



2. Preparing The Twist Pump

Assembling The Twist Pump

1. Wash hands before touching breast pump components.
2. Snap the membrane into the valve until it lies completely flat.
3. Place the valve up into the connector and make sure the seal is tight.
4. Attach the diaphragm on top of the connector.
5. Connect the diaphragm top by attaching it to the top of the diaphragm.
6. Insert the tubing connector with the tubing attached to the diaphragm.
7. Screw the storage container onto the connector.
8. Insert the tubing connector into the pumping port on the breast pump.
9. Insert the DC connector on the power cord into the DC port on the pump, then insert the USB into the USB socket adapter and plug it into a power outlet.
10. After pumping, store your breastmilk in the refrigerator and clean your pump. Make sure all electric components are dry.



Battery Installation

1. Open the battery cover by rotating it to the left, and install four AA batteries and close the cover.
2. Align the battery cover arrow with the arrow on the base and twist it to the right to lock.

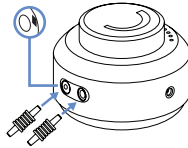


3. Using The Twist

How To Use The Dual Pump

Double Pumping

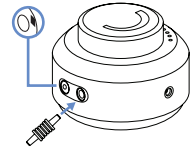
Plug both of the tubing connectors into the ports and make sure that the black button in the left port is completely held down by the tubing connector, as this will allow suction on both sides of the pump.



Single Pumping

Make sure to insert the tubing connector into the port on the right side.

Do not use the port on the left with a black button or you may experience suction loss.



Turning On/Off The Twist Pump

1. Turn the dial on the pump body. The device will power ON.
2. Begin pumping with Massage Mode by setting the dial between "Min" and the midpoint of the dial.
3. To transition to Expression Mode, turn the dial anywhere between midpoint and "Max".
4. Move dial to adjust suction to your preferred comfort level.
5. When you wish to stop expressing: first twist the dial to turn off the pump, then remove the breast shield and milk collection kit from your breast.

4. Warnings & Precautions



Warning: Potentially dangerous situation that could result in serious injury.



Caution: A possibly dangerous situation that could result in slight bodily injury.



Manufactured for:
Motif Medical®, LLC
8 The Green, Suite 5601
Dover, DE 19901

Phone: (844) 272-8390
Email: info@motifmedical.com
Web: www.motifmedical.com

motif
MEDICAL