



CERTIFIED BY
GOVERNMENTAL
LABORATORIES*

NEW
IP66 CONTROL
UNIT

SMD600 Plus

ENHANCED WALK-THROUGH MULTI-ZONE METAL DETECTOR



HIGH SENSITIVITY

Fully compliant with
the **NIJ-0601.02**
Law Enforcement Standard



HIGH DISCRIMINATION

Compliant with and Certified
to the **strictest Standards**
for Airport security screening

*The **SMD600 Plus** is the first Metal Detector in the market fully compliant with the NIJ-0601.02 Standard, as required in **very high sensitivity applications**, which also allows **very high throughput** in high security public screening checkpoints.*

*Data available upon request



FULLY COMPLIANT WITH THE NIJ-0601.02 STANDARD

The Standard establishes the requirements of Sensitivity, Discrimination and Immunity for Law Enforcement and Correctional Facilities.



NIJ-0601.02 FULL COMPLIANCE

The **SMD600 Plus Metal Detector** fully complies with the requirements of the **NIJ0601.02 Standard** for all Security Levels, and can therefore be applied in situations from the inspection of visitors to that of inmates **in top-security checkpoints, even in areas with strong electrical and mechanical interferences.**

3 LEVEL OF SECURITY



LO LEVEL: LARGE OBJECT SIZE

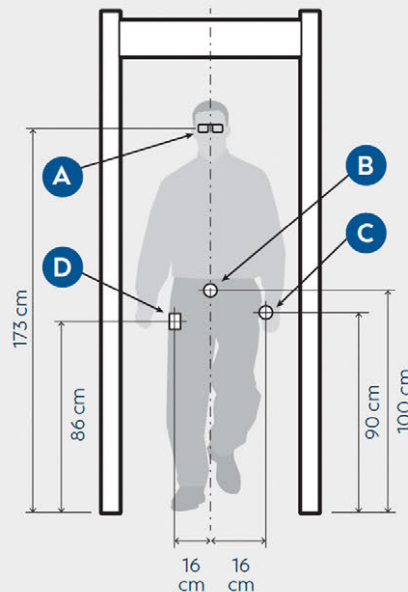


MO LEVEL: MEDIUM OBJECT SIZE



SO LEVEL: SMALL OBJECT SIZE

INNOCUOUS ITEMS



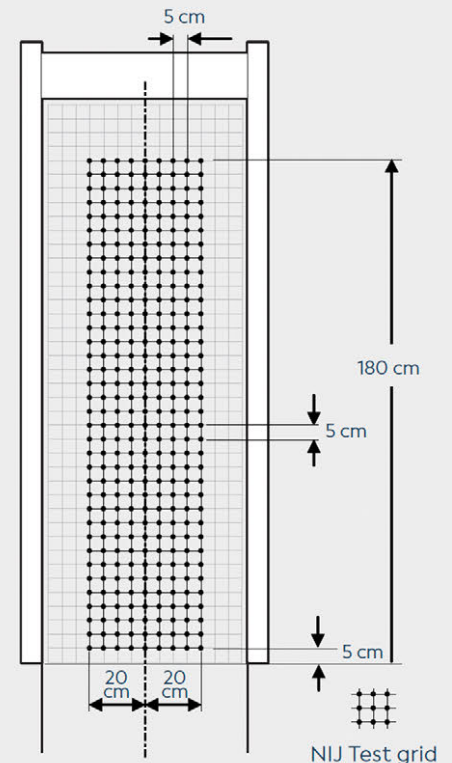
DISCRIMINATION TEST

Clean tester shall carry the innocuous items specified, performing the specified number of transits, walking at normal speed (0,5...1,5 m/s):

- LO** 25 transits with A + B + C + D (max 5 alarms)
- MO** 25 transits with A + B (max 5 alarms)
- SO** 8 transits with no items (no alarms allowed)

- A** Eyeglasses
- B** Belt buckle
- C** Watch
- D** Set of coins

TEST POSITIONS



DETECTION TEST OBJECT TRANSITS

Perform, for each Test Object, two passages, one forward and the other backwards, for each position and for each orientation, verifying that for every transit an alarm is triggered.

TWO-IN-ONE ENHANCED METAL DETECTOR

The SMD600 Plus is a very high sensitivity Metal Detector that also offers characteristics of high discrimination and high detection uniformity.



HIGH SENSITIVITY

- Quick, accurate analysis of all parts of the body of people in transit, from the shoe level to the crossbar
- Built-in programs to screen visitors and staff for weapons and contraband
- Met-Identity technology for Identification of Threat Composition
- Accurate pinpointing of individual and multiple metal targets



HIGH THROUGHPUT

- Cutting-edge discrimination technology allows personal effects to be ignored, creating rapid transit flow
- No need to remove items such as belts, coins, keys, jewelry, watches, wallets, etc.
- Very low nuisance alarm rate even at the strictest Security Levels
- High transit flow rates and the minimum need for intervention by inspection personnel



ALARM



NO ALARM



SMD600 PLUS - ENHANCED WALK-THROUGH MULTI-ZONE METAL DETECTOR



UNIFIED CONSTRUCTION
FOR INDOOR AND
OUTDOOR USE



NEW CERTIFIED IP66 CONTROL UNIT

- Total compatibility with previous IP20 (plastic) and IP65 (stainless steel) control units
- Robust structure through the use of high-performance polymers for the construction of housing
- Waterproof / Dustproof: IP66 compliant (IEC 60529)
- Exceptional impact resistance at low and high temperatures and resistance to corrosion from atmospheric agents
- Display made with specific polymer to improve the visibility of the LEDs by increasing the definition and clarity



UNIQUE ALARM SIGNALING

- High visibility of the control unit and the zone indication independent from the operator position and the installation environment
- Flexible Acoustic Alarm Signaling System:
 - ▶ 10 Continuous and Pulsed Tones
 - ▶ 34 Special Sounds
- 10 Alarm Volume Levels
- Very High Precision Transit Counter



Light bars indicate metal position vertically and can also show pacing lights.



MOST POWERFUL AND VERSATILE SECURITY FEATURES

- Up to 50 built-in Security Programs
 - ▶ Up to 30 International Standards
 - ▶ Up to 20 Customizable Levels
- Chip Card system for fast, simple and secure parameter changes (i.e. alarm volume and tone, counter reading, etc.) and security level selection.
- Any security standard can be enhanced with selectable random alarm probability



SMD600 Plus/PZ MODEL CONFIGURATION

STANDARD CONFIGURATION

Fully compliant with, and exceeding, the NIJ-0601.02 Standard	●
4 display bars each programmable as zone indicators and/or pacing lights	●
Dual Side 20 x 2 localization zones	●
Antivandalic and Antitampering IP66 control unit	●
High precision transit counter (2-beam photocells)	●
Chip Card Reader	●
BT, infrared and RS-232 communication	●
Programmable Random Alarm capability	●
3-Level Password and hardware key access protection	●
Met-Identity technology (separate Ferrous and Non-Ferrous alarm signaling)	●
One Touch Automatic Self Installation [OTS]	●
Automatic Operational Functional Verification [OFV]	●
Automatic Vibration Compensation [AVS, EVA]	●
Automatic Channel Search [CS]	●
Automatic Floor Gain Adjustment [FGA]	●
Automatic Technical Functional Verification [TFV]	●
Automatic Environmental Noise Compensation [ENA]	●
Powered by safe low voltage DC	●
Anti-tamper on/off switch	●

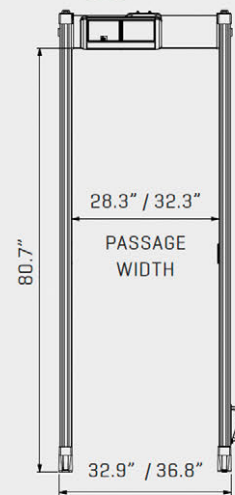
COMMUNICATION CAPABILITIES

TYPE OF OPERATION	ETHERNET	USB	INFRARED	BT	RS-232
MAINTENANCE	○	○		●	●
REMOTE CONTROL	○		●	●	●
REMOTE DATA COLLECTION	○				

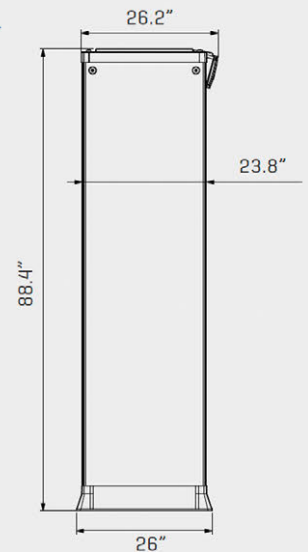
STANDARD ● OPTION ○

DIMENSIONS

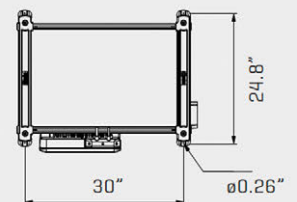
FRONT



LATERAL



TOP



SMD600 Plus can be upgraded anytime either with MI2 Sensor for superior smartphone and cellphone detection, **or with TDU** including advanced IR processing for fully automatic, highly selective and precise detection of maximum facial temperature measurements even in harshest environmental conditions.



METAL
DETECTOR

MI2 SENSOR

The **SMD600 Plus with integrated MI2 sensor** provides unmatched versatility in its ability to screen people in applications that require simultaneous detection of all metal (magnetic and non-magnetic) firearms and cellphone/smartphone devices, including the most miniaturized, low-metal content versions.



CELL PHONES
DETECTOR

In this configuration both panels of the archway are equipped with dual color light bars (red and yellow colors) and 4-beam photocells modules.

Code: 93530



TDU THERMAL DETECTION UNIT

The **TDU** (Thermal Detection Unit) is an **upgrade sensing kit for covid screening compliance**:

- Simultaneous threat and fever detection on all screened persons
- Accurate person measurement using an infrared camera with automatic determination of the highest temperature
- Embedded upgrade: no additional installation checkpoint space required

- 1 Thermal Camera Arm
- 2 Dual Reference Calibration Unit

Code: TDU/P





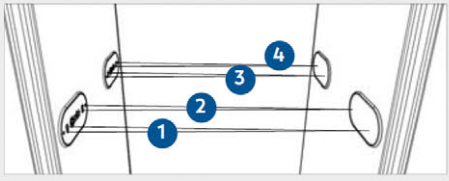



**ANTI-COVID
SECURITY SOLUTION**







SMD600 PLUS - ENHANCED WALK-THROUGH MULTI-ZONE METAL DETECTOR

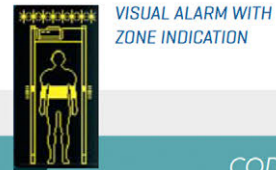
OPTIONS / ACCESSORIES

	DESCRIPTION		CODE
<p>INTEGRATED CAMERA SYSTEM</p>	<p>Video camera with support arm and connecting cables. Installation of the APSiM3 Plus module is required.</p>		<p>54253</p>
<p>APSiM2 PLUS Integrated Web-server & Logger, Battery Back-up and Charger</p>	<p>Lower Connection Module with anti-tamper on/off switch, RS-232 interface, internal battery back-up and the following functions:</p> <ul style="list-style-type: none"> ▶ Built-in 10/100 base T Ethernet LAN interface ▶ Web server for set-up and remote data log ▶ Real/Time clock with battery backup ▶ Non-volatile Memory for Metal Detector events storage 		<p>APSiM2Plus/P</p>
<p>APSiM3 PLUS Wireless Network Module</p>	<p>Includes all features and characteristics of the APSiM2 Plus with additional:</p> <ul style="list-style-type: none"> ▶ Wi-Fi communication capability ▶ Compatibility with NetID Management software [NetID software license not include] 		<p>APSiM3Plus/P</p>
<p>EMBEDDED BATTERY BACK-UP AND CHARGER</p>	<p>Lower Connection Module with anti-tamper on/off switch, RS-232 interface and internal battery back-up. The module provides an audible 'flat battery' signal activated when the battery charge goes below the operational limit of the device [signal endurance: about 12 hours].</p>		<p>APSM2Plus/P</p>
<p>VERY HIGH PRECISION TRANSIT COUNTER (4-BEAM)</p>	<p>The 4-beam version further increases accuracy in counting and determination of transit direction, even in intense transit conditions:</p> <ul style="list-style-type: none"> ▶ In-Bound Transits ▶ Out-Bound Transits ▶ Alarm Rate ▶ Automatic Compensation for repeated transits of the same person 		<p>46112</p>
<p>IP65 CONFIGURATION</p>	<p>Outdoor sheltered permanent or non-sheltered short-term installations [single event entrance]. This kit includes shelters, and protection covers for power supply.</p>		<ul style="list-style-type: none"> • 28.3" passage width [102710] • 32.3" passage width [102712]

OPTIONS / ACCESSORIES

	DESCRIPTION		CODE
<p>WHEEL KIT - LONG RANGE</p>	<p>For heavy duty, longer range movement of the walk-through metal detector.</p>		<p>70796</p>
<p>WHEEL KIT - SHORT RANGE</p>	<p>For short range movement of the walk-through metal detectors.</p>		<p>75459U</p>
<p>METAL DETECTOR DIVESTING TABLE</p>	<p>In combination with CEIA Walk-Through Metal Detectors, it is a temporary location of personal metal effects for people to be screened:</p> <ol style="list-style-type: none"> Standard length: 24" Extended length: 47" Outdoor version: 51" 		<p>STANDARD: 18074 EXTENDED: 39491 OUTDOOR: 67021U</p>
<p>RRU</p>	<p>Remote relay unit (RRU) to repeat the detection alarms of the gate through a relay contact. The RRU module can be used for integration of the Metal Detector in interlocked door systems. An additional relay is available for a customer-specified application.</p>		<p>RRU-2</p>
<p>REFERENCE TEST SAMPLES</p>	<p>CEIA provides certified Test Samples reproducing for shape, material and signal on WTMDs the same effect of the reference targets:</p> <ol style="list-style-type: none"> NIJ-0601.02-SKN: Complete test samples kit for NIJ-0601.02 detection and discrimination compliance verification NIJ-0601.02-SO/MO-SK: Test samples kit for NIJ-0601.02 MO and SO classes detection capability verification EMD-SK-GDML: Reference samples for accurate verification of the disassembled guns Security Level 		<p>NIJ-0601.02-SKN NIJ-0601.02-SO/MO-SK EMD-SK-GDML</p>
<p>OFV</p>	<p>Operator Functionality Verification test-kit</p>		<p>OFV-KITCASE</p>

OPTIONS / ACCESSORIES



	DESCRIPTION		CODE
RCU2	Control unit for full remote access, including alarm signalling and programming of CEIA Metal Detectors. The connection is performed via serial cable connection or via BT [option].		RCU2
MD-SCOPE	Powerful, PC based installation and service Software. Includes oscilloscope and terminal functionality. The connection is performed via BT [standard] or via cable connection.		MD-SCOPE2
CROSSBAR BATTERY BACK-UP	<ol style="list-style-type: none"> 1 Crossbar battery back-up in stainless steel case. Up to 10 h of autonomous working time. 2 Protection cover 		55681 Protection cover: • 28.3" passage width: 88858 • 32.3" passage width: 88861
SUPPLY UNIT SERIES	<ol style="list-style-type: none"> 1 MBSU LWSC (Light Weight Soft Case Version) 2 MBSU-2 3 TSU (Tactical supply unit) <p>Portable and compact battery back-up units and charger designed to supply DC voltage to CEIA equipment where mains is not available or as Uninterruptable Power Supply unit [UPS] in installations requiring continuous operations.</p> <p>TYPICAL CONTINUOUS OPERATION</p> <ul style="list-style-type: none"> • MBSU LWSC: 14h • MBSU-2: 14h • TSU: 4 battery pack: 12h / 6 battery pack: 17h / 8 battery pack: 23h 	<ol style="list-style-type: none"> 1 2 3 	MBSU LWSC MBSU-2 TSU
IRC-1	Infrared Remote Controller for wireless remote programming of the control unit.		47180
CHIP CARDS	Chip cards for simple and secure selection of Security Levels and parameter setting. List of chip-cards available on request.		
MD-WHK	Wireless repeater of acoustic indications for WTMDs.		MD-WHK
UPPER CONNECTION MODULE	This module along with an extension cable allows the connection of power supply and serial communication to personal computers or CEIA accessories.		• 46650 • 7": 89040 • 16.4 ft: 95352
TOP POWER CABLE	This cable allows the AC/DC adapter to be connected to PS/COM port located on top of the TX antenna to supply the Metal Detector Gate.		• 32.8 ft: 64228 • 65.5 ft: 68346

NetID ANYWHERE™

WALK-THROUGH METAL DETECTOR MANAGEMENT SYSTEM



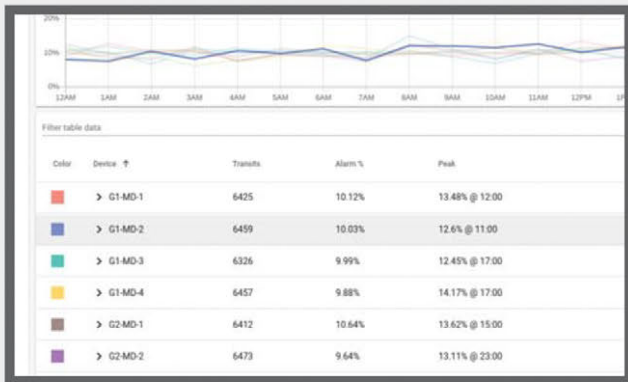
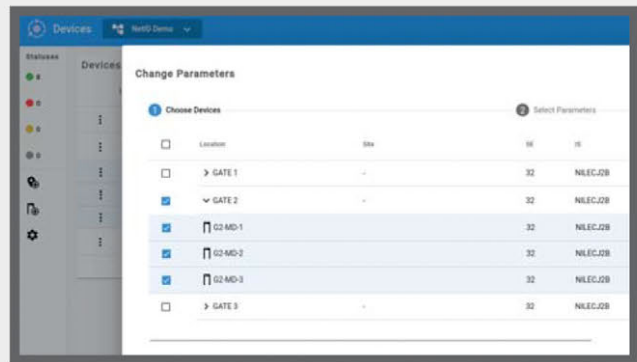
NetID Anywhere is a cloud-based systems management solution

for CEIA walk-through metal detectors (WTMD) that centralizes access to important statistics, automates monitoring of critical calibration parameters.



MONITOR

- Monitor WTMD status and settings
- Avoid accidental or unwanted setting changes
- Email notification for critical events or changes
- Logs for every event or change in the WTMDs
- Advanced diagnostics capability



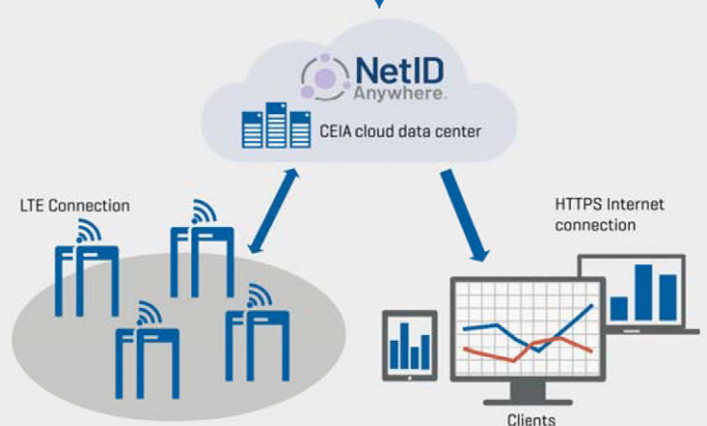
REPORT

Data is collected and retained for each metal detector, including number of transits and metal alarms, allowing analysis of transit flows and alarm rate trends



NETWORKING

- No software to install
- No Infrastructure required
- Easy to install and integrate
- Secure
- Scalable
- Easy to Use, Limited Training Required
- Technical support and software updates included



SPECIFICATIONS

GATE STRUCTURE	State-of-the-art, robust and washable panels
	Protected against aging, weather and wear
	Antivandalic and Antitampering IP66 control unit
	Embedded high precision transit counter (2-beam photocells)
OPERATIONAL FEATURES	High discrimination and transit flow rates five or more times greater than other metal detection systems
	Quick reset time as short as 0.2 seconds for high throughput rate
	Very high detection speed [up to 50" ft/sec.]
	Built-in operational functional verification [OFV]
QUALITY	One-touch key reading of inbound, outbound and Security Level Data
	Continuous self diagnostic system
	Proven reliability
	No periodic re-calibration and preventive maintenance required
	No scheduled maintenance
ALARM SIGNALING	Fully digital design
	Multi-zone display bar for "height on person" localization
	Dual Side 20 x 2 localization zones
	4 light bars with selectable entry/exit and pacing indication
	Green and red metering signals proportional to the mass of the detected target
TYPE OF SIGNALING	10 selectable continuous and pulsed tone plus 34 special tones
	10 selectable sound intensities ranging from 0 to 90 dbA at 3.3 ft
PROGRAMMING	Fixed or proportional to the mass in transit - visible from 19.7 ft under lighting of 4000lux
	60 distinct zones [20 vertical x 3 lateral] entry and exit side
ENVIRONMENTAL DATA	Up to 50 built-in Security Programs
	Remote via Infrared Remote Control Unit, BT or Ethernet 10/100 base T [option] interface
	Security level: International Standard [IS] command / Chip card
	Local by Control Unit alphanumeric display and keyboard
	Programming and chip card access protected by user and super-user passwords
INSTALLATION DATA	Powered by safe low voltage DC through external switching power supply adapter
	Power Supply : 100...277V~ ±10%, 47...63Hz, 40 VA typical consumption
	Operating temperature: -4°F to 149°F [-34°F to 158°F upon request]
	Storage temperature: -34°F to 158°F
INSTALLATION DATA	Relative humidity: 0 to 95% [without condensation]
	Automatic synchronization between two or more metal detectors with distance of down to 2" without the use of external cables
INSTALLATION DATA	Automatic One-Touch Self-installation function [OTS]

CERTIFICATION AND COMPLIANCE

- Fully compliant with the NIJ-0601.02 Standard requirements
- Complies with the applicable Standards for Law Enforcement and Correctional Facilities
- Compliant with and certified to the strictest Standards for Airport Security
- Compliant with and certified to the applicable Standards for Enhanced Metal Detectors [EMD]
- Compliant with the applicable electromagnetic Standards on Human Exposure and Pacemaker Safety
- Compliant with applicable International Standards for electrical safety and EMC
- Harmless to magnetic media [CD, tapes, etc.]

APPLICATIONS

- ✓ GOVERNMENT BUILDINGS
- ✓ AIRPORTS
- ✓ INDUSTRIES
- ✓ INDUSTRIES (LOSS PREVENTION)
- ✓ NUCLEAR FACILITIES
- ✓ PRISONS (VISITORS)
- ✓ PRISONS (INMATES)
- ✓ COURTS
- ✓ DATA PROCESSING CENTERS (EDP)

COMPREHENSIVE SUPPORT

CEIA USA PROVIDES FULL OPERATIONAL AND TECHNICAL TRAINING SUPPORT BY CERTIFIED PERSONNEL EITHER AT CEIA FACILITY OR AT CUSTOMER LOCATION.



SMD600 PLUS - ENHANCED WALK-THROUGH MULTI-ZONE METAL DETECTOR



1-800-930-3766 - www.securitydetection.com

MA - NY - SC - OH - FL - IL - OK - CA - GA - DC