

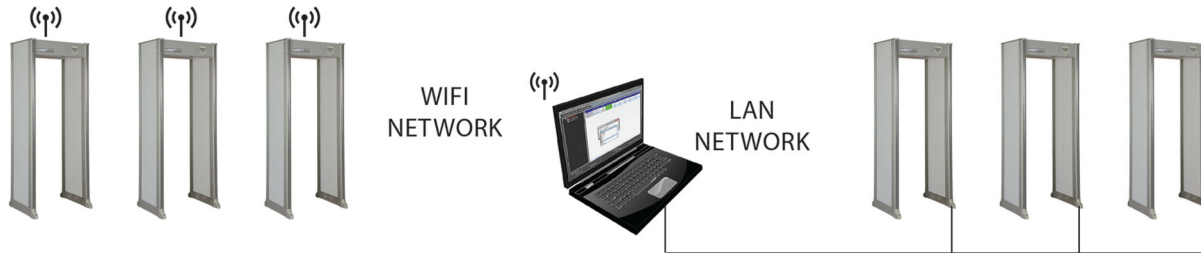
Garrett Wireless or Wired iC Module



Model #1171600* Wireless or Wired iC Module

* Includes CMA Connect Software and iC Wired/Wireless Module

Made in the USA 



Part No.	Country	MHz
1171600	USA/Canada	2412-2462, 5180-5580, 5660-5700

Monitor and Control your walk-through from anywhere in the world.
SPECIFICATIONS:

System Requirements:

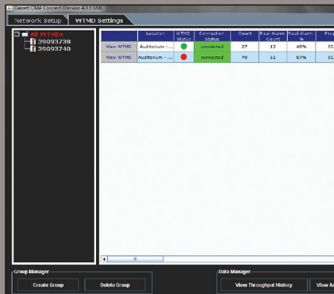
- WIFI or LAN Network
- USB Flash Drive
- Static IP Address to be assigned to each individual iC module

Software Requirements:

- CMA Connect™ software (Included)
- Current Java™ Runtime Environment



CMA Connect™ Software

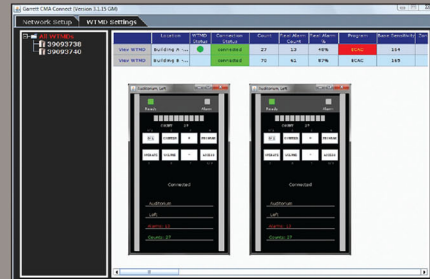


MONITOR

◀ View all the walk-throughs in your network for real time monitoring of status, patron counts and alarms.

CONTROL

▶ Supervisors can use the iC Module to remotely troubleshoot or change detector settings.



ANALYZE

▲ The iC Module allows you to download and save up to 1 year of data for analysis of the activities and statistics for each walk-through metal detector in your network.

MANAGE GROUPS

◀ Group Management allows the walkthroughs to be organized as groups for viewing. Settings can be pushed out to groups simultaneously when required.



Toll Free
1-800-930-3766
www.securitydetection.com

Garrett Wireless or Wired iC Module



Made in the USA 

For use with Garrett PD 6500*i* or MZ 6100

SPECIFICATIONS:

Communication Input:

RS485 Garrett proprietary communications protocol

Communications Output:

USB for data retrieval
WEP (40 bits and 104 bits), WPA-Personal/Enterprise, WPA 2 Personal/Enterprise
802.1x support for all EAP variants, including LEAP
RS 485 for additional Garrett devices such as Remote Control

Network Requirements

WiFi, 802.11 ac/b/g/n on 2.4GHz and 5GHz WiFi bands
LAN, 10/100 base T ethernet

System/Software Requirements:

Personal Computer and Wireless Network
Garrett CMA Connect Software
Java Runtime (provided)

Simultaneous Connections:

10 Control session
10 Monitor session

Memory: 128 Mb Flash

Built In Features:

Clock with internal battery backup
Secondary local Wi-Fi channel reserved for device configuration
Real time communication of PD 6500*i* and MZ 6100 settings and status
Backup power for 45 seconds, to notify when walkthrough is turned off
12 month alarm history
Powered from the PD 6500*i* or MZ 6100 via the RS485 communication cable

Controls:

Pushbutton to enable configuration channel broadcast and access
Power Cycle to block configuration channel broadcast and access

Indicators:

Wireless LAN
System Status
Network Activity
Walkthrough Activity

Antenna:

Weatherproof External Dual Band Dipole with RSMA connector

FCC and Industry Canada Certification

Power:

15 Volt, 3.75 Watts

Dimensions:

4.5 x 1.2 x 5.9 in (11.4 x 2.9 x 14.9 cm)
9.2 oz. (.26 Kg)

Operating Temperatures:

-4°F (-20°C) to 158°F (70°C)
Environmental Module protected inside PD 6500*i* or MZ 6100 housing

Warranty:

Limited, 24 months parts and labor

Gain real-time access to all walk-through detectors on your network!

Used in conjunction with Garrett's PD 6500*i* or MZ 6100 model detector, the iC Wireless Module allows control, real time monitoring, diagnostics and group management wired or wirelessly from a remote location. The internal memory records all changes to settings, passenger traffic and alarm history for analytical evaluation.



FEATURES AND FUNCTIONALITY

- **Check settings and diagnose issues** from your network computer.
- **Analyze security checkpoint** alarm rates, patron counts and other diagnostic statistics. 12-Month alarm history offers one-year rolling log file.
- **Control** walk-through settings remotely as individual units or as groups.
- **Real-time data output** of activity can be viewed on your PC.
- **No separate power is required.** Uses walk-through power.
- **Software included.** Garrett's CMA Connect software is included with each CMA Wireless Module. See reverse side for details on this software.



Toll Free
1-800-930-3766
www.securitydetection.com