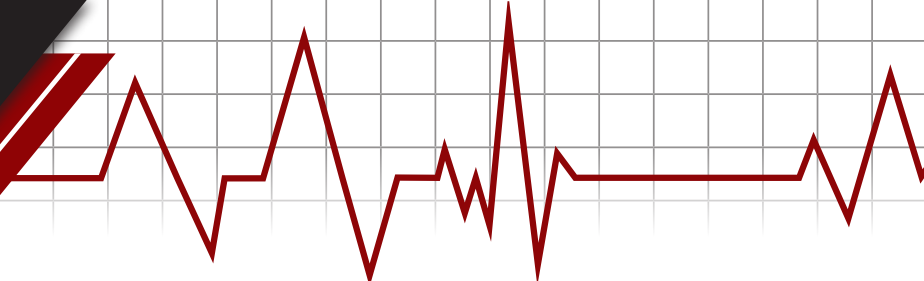


WISE

EMERGENCY VEHICLE SEATING



PRODUCT GUIDE



Attendant & Child Safety Seats w/ 2 Pt Belt



**SEATS WILL ACCEPT NORMALLY
OPEN CIRCUIT BELTS**

Seamless Attendant

- WM1611** 12° Back Attendant Seat w/2 Pt Belt
- WM1659** 6° Back Attendant Seat w/2 Pt Belt

Seamless Child

- WM1615** 12° Back Child Seat w/2 Pt Belt
- WM1791** 6° Back Child Seats w/2 Pt Belt

Sewn Attendant

- WM1639** 12° Back Attendant Seat w/2 Pt Belt
- WM1857** 6° Back Attendant Seat w/2 Pt Belt

Sewn Child

- WM1607** 12° Back Child Seat w/2 Pt Belt
- WM1834** 6° Back Child Seat w/2 Pt Belt

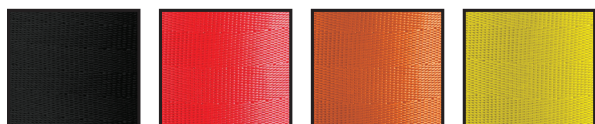


Attendant Seat



Child Seat

BELT COLORS AVAILABLE:



SEE PAGE 14 FOR AVAILABLE COLORS

Attendant & Child Safety Seats w/ 3 Pt Belt



**SEATS WILL ACCEPT NORMALLY
OPEN CIRCUIT BELTS**

Seamless Attendant

- WM1613** 12° Back Attendant Seat w/3 Pt Belt
- WM1814** 6° Back Attendant Seat w/3 Pt Belt

Seamless Child

- WM1637** 12° Back Child Seat w/3 Pt Belt
- WM1807** 6° Back Child Seat w/3 Pt Belt

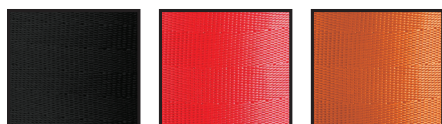
Sewn Attendant

- WM1614** 12° Back Attendant Seat w/3 Pt Belt
- WM1793** 6° Back Attendant Seat w/3 Pt Belt

Sewn Child

- WM1638** 12° Back Child Seat w/3 Pt Belt
- WM1835** 6° Back Child seat w/3 Pt Belt

BELT COLORS AVAILABLE:



SEE PG 14 FOR UPHOLSTERY COLORS



**STANDARD
RIGHT SHOULDER
OPTIONAL LEFT
SHOULDER BELT**

Attendant Seat



Child Seat

Attendant & Child Safety Seats w/ 4 Pt Belt



SEATS WILL ACCEPT NORMALLY
OPEN CIRCUIT BELTS

Seamless Attendant

- WM1655** 12° Back Attendant Seat w/4 Pt Belt
- WM1856** 6° Back Attendant Seat w/4 Pt Belt

Seamless Child

- WM1657** 12° Back Child Seat w/4 Pt Belt
- WM1861** 6° Back Child Seat w/4 Pt Belt

Sewn Attendant

- WM1656** 12° Back Attendant Seat w/4 Pt Belt
- WM1858** 6° Back Attendant Seat w/4 Pt Belt
- WM2029** Attendant Seat w/4 Pt Belt, Normally Open Circuit

Sewn Child

- WM1658** 12° Back Child Seat w/4 Pt Belt
- WM1863** 6° Back Child Seat w/4 Pt Belt

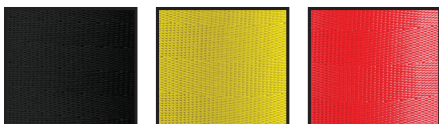


Child Seat



Attendant Seat

BELT COLORS AVAILABLE:



SEE PG 14 FOR UPHOLSTERY COLORS



Attendant & Child Safety Seats w/ 5 Pt Belt



**SEATS WILL ACCEPT NORMALLY
OPEN CIRCUIT BELTS**

Seamless Attendant

- WM1806** 12° Back Attendant Seat w/5 Pt Belt
- WM1855** 6° Back Attendant Seat w/5 Pt Belt

Seamless Child

- WM1808** 12° Back Child Seat w/5 Pt Belt
- WM1862** 6° Back Child Seat w/5 Pt Belt

Sewn Attendant

- WM1859** 12° Back Attendant w/5 Pt Belt
- WM1860** 6° Back Attendant w/5 Pt Belt

Sewn Child

- WM1864** 12° Back Child Seat w/5 Pt Belt
- WM1865** 6° Back Child Seat w/5 Pt Belt

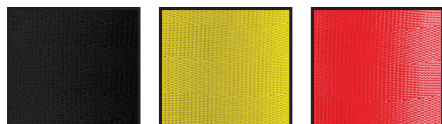
**Child Seat w /
WM1985 Armrest**



Attendant Seat



BELT COLORS AVAILABLE:



SEE PG 14 FOR UPHOLSTERY COLORS

Attendant Seats w/ 6 Pt Belt

Our seat assemblies with 6-Pt belt system offers additional upper torso protection which allows you to move to the edge of the seat while holding the body securely in the seat. This seat will not accept armrest.

Seamless Attendant

WM2050 Attendant Seat w/6 Pt Belt

Seamless Child Seat

WM2072 Back Seat w/ 6 Pt Belt

Sewn Attendant

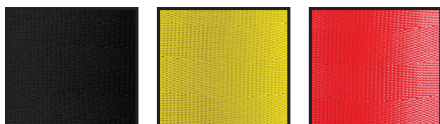
WM2069 Attendant Seat w/ 6 Pt Belt

Sewn Child Seat

WM2081 Back Seat w/ 6 Pt Belt



BELT COLORS AVAILABLE:



SEE PG 14 FOR UPHOLSTERY COLORS

Multi-Patient Transfer - Attendant & Child Safety Seats

- Enhances your Ambulance with Greater Flexibility
- Quick release hinge allows seat back to fold forward
- Easy release on Swivel Base allows seats to swivel inward
- Non-skid surface on ABS back cap adds security when placing backboard on seats
- Backboard is secured by wall mount anchored belts

**SEATS WILL ACCEPT:
NORMALLY OPEN CIRCUIT BELTS
ALL SEAT BELT CONFIGURATIONS
CALL FOR MORE INFO**

Seamless Attendant Fold Down

WM1805 Seamless Attendant Seat w/3 Pt Belt

WM2010 Seamless Attendant Seat w/4 Pt Belt

WM2011 Seamless Attendant Seat w/5 Pt Belt

Seamless Child Fold Down

WM1995 Seamless Child Safety Seat w/3 Pt Belt

Sewn Attendant Fold Down

WM2047 Sewn Attendant Seat w/4 Pt Belt

WM2012 Sewn Attendant Seat w/5 Pt Belt

3 PT BELT COLORS AVAILABLE:

BLACK / RED / ORANGE

4 PT BELT COLORS AVAILABLE:

BLACK / RED / YELLOW

SEE PG 14 FOR UPHOLSTERY COLORS

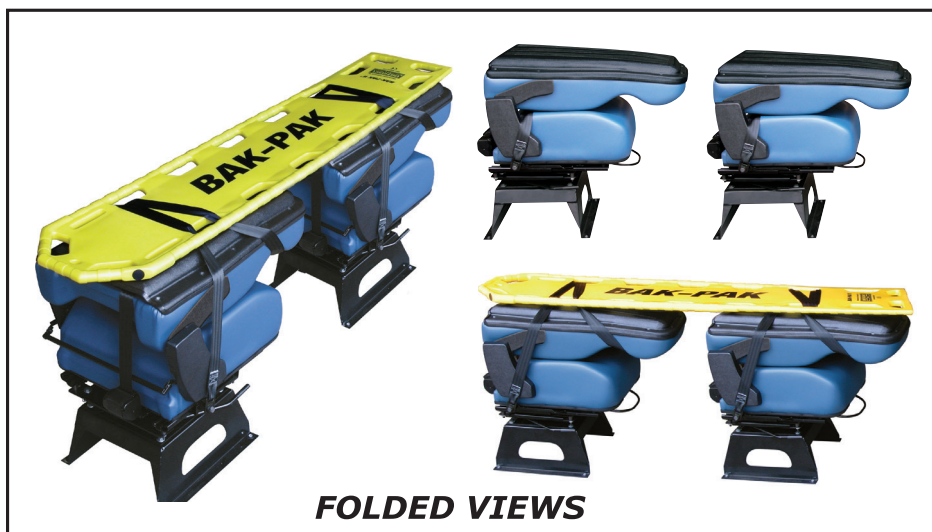


Attendant

**STANDARD RIGHT SHOULDER
OPTIONAL LEFT SHOULDER BELT**



Child



FOLDED VIEWS

CPR / Squad Bench Wall Mount

WM1966-2 Back Cushion Only

WM1966-3 Head Rest Only

**Seat bottom cushions ordered to specification*

WM2015 Back Rest Cushion

**Seat bottom cushions ordered to specification*

BELTS SOLD SEPARATELY (PAGE 13)



WM2015



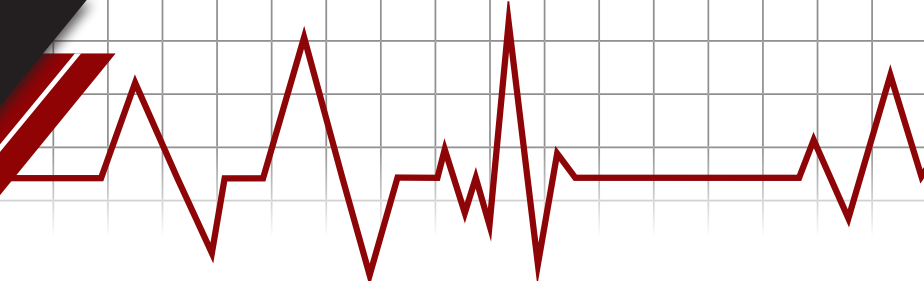
WM1966-2, -3

w/ 6 pt Belt & Custom Seat Cushion

SEE PG 14 FOR UPHOLSTERY COLORS

WM2015 SHOWN MOUNTED IN AMBULANCE W/ CUSTOM SIZED SEAT CUSHIONS





ALL WISE BASES FEATURE A CORROSION RESISTANT, POWDER COATED FINISH

Seat Bases

WM1934

Standard 8-way Swivel Base w/45° Stops
9.568" Tall



WM1934

WM1935

Standard 2-way Swivel Base w/Forward and Rear Facing
Designed especially for Child Safety Seats
9.568" Tall

WM1936

Low Profile 8-way Swivel Base w/45° Stops
4.624" Tall



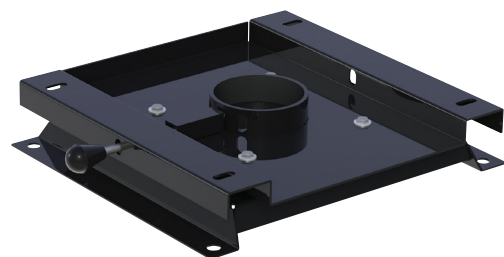
WM1937

WM1937

Low Profile 2-way Swivel Base w/Forward and Rear Facing
Designed especially for Child Safety Seats
4.624" Tall

WM10233

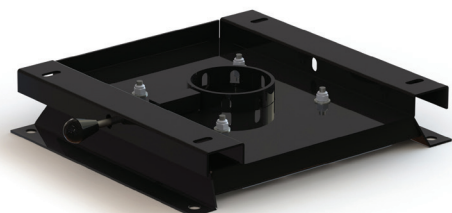
Extra Low Profile w/30° Left and Right Swivel Base
3.253" Tall



WM10233

WM10239

Extra Low Profile 8-way Swivel Base
3.253" Tall



WM10239

Cabinet Bases

WM1610 OPEN CABINET BASE

Height: 9" Width 17.75" Depth 17.75"

- Mounts in two positions - curb side or rear-facing with 16" centers



WM1610

WM1660 CABINET BASE

With Latch

Same construction as WM1610

Height: 9" Width 17.75" Depth 17.75"

- Mounts in two positions - curb side or rear-facing with 16" centers



WM1660

WM1752 CABINET BASE

With Key Lock

Same construction as WM1610

Height: 9" Width 17.75" Depth 17.75"

- Mounts in two positions - curb side or rear-facing with 16" centers



WM1752

WM1915 HEATER CABINET BASE

Designed to house heating unit

Height: 12.313" Width: 17.875" Depth: 17.75"



WM1915

Squad Bench Cushions

Cushion sizes are custom made to your measurements

- Unique, detachable system for easy, quick removal and replacement when cleaning up
- Seamless construction for easy removal of blood borne pathogens
- Starlite plastic base is impervious to disinfectants and body fluids
- High density, fire retardant foam meets FMVSS 302
- Routed inside edge minimizes cover tearing from within
- Uni-Seal construction
- Sewn cushions have a 2 Mil vapor barrier between cover and foam



SEE PG 14 FOR UPHOLSTERY COLORS

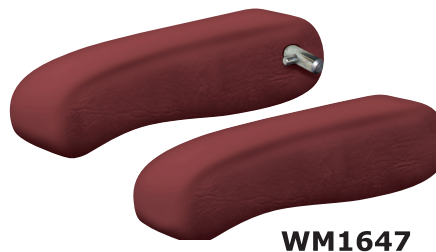


All Wise Ambulance Seats are "Arm Rest Ready"

6 Pt ASSEMBLIES WILL NOT ACCEPT ARM RESTS

Sewn Armrests

- WM1647** Sewn Armrest Kit
Includes Left & Right Hand
- WM1647R** Sewn Armrest Right
- WM1647L** Sewn Armrest Left

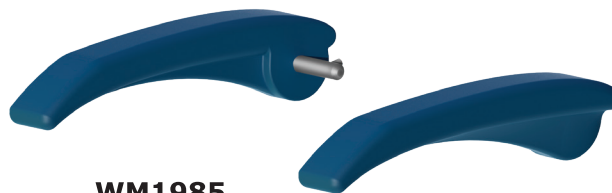


WM1647

SEE PG 14 FOR UPHOLSTERY COLORS

Fully Sealed Antimicrobial Armrests*

- WM1985R** I-Skin Armrest Right
- WM1985L** I-Skin Armrest Left



WM1985

**First time seat retrofitting w/ arm rest will require a WM2059 Back Cap*

Available Colors



0001
Cobalt

0002
Desert Rose

0005
Black

0003
Ash

0004
Gun Metal

Replacement Parts

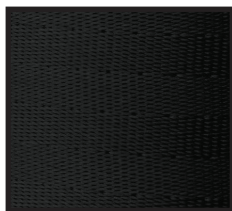
- VM8951** Seamless Seat Cushion
- WM1959** Adjuster Kit Complete w/Towel Bar & Hardware
- WM1959-1** Towel Bar Only
- MP2937** Tear Drop Knob
- WM1812** ABS Replacement Back Cap for 2, 3, 4, & 5 Pt Belt Systems
- WM1867** ABS Replacement Back Cap for Multi-patient Transfer Fold Down Seats
- WM2059** ABS Replacement Back Cap for Seat Assemblies with Arm Rests
- WM2074** ABS Replacement Back Cap for 6 Pt Belt System
- WM1660-1** Door Assembly Kit w/ Latch Lock
- WM1752-1** Door Assembly Kit w/ Keyed Lock

Belts and Restraints

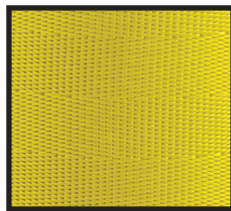
- WM2102** 2 Pt ALR Belt w/ Yellow Web
- WM1261** 2 Pt Orange Web Belt
- WM1682** 2 Pt Orange Web Belt w/ Normally Open Circuit
- WM1974** 2 Pt Red Web Belt w/ 8" Buckle
- WM2034** 2 Pt Black Web Belt w/ Sleeve, Normally Open Circuit
- WM678** 2 Pt Black Web Belt
- WM2075** 3 Pt Integrated Black Web Belt, 8" End Release Buckle, with Normally Open Circuit
- WM2090** 3 Pt Integrated Black Web Belt w/ 11.5" Buckle
- WM2078** 3 Pt Integrated Black Web Belt
- WM2076** 4 Pt Integrated Black Web Belt
- WM2077** 5 Pt Child Black Web Belt
- WM2088** 5 Pt Integrated Black Web, Dual Sensor Belt w/ Rotary Buckle
- WM2080** 6 Pt Integrated Black Web Belt
- WM2040** 4 Pt Wall Mount Black Web Belt w/ Mounting Hardware
**Does not meet SAE J2036 Standards*
- WM1981** 6 Pt Wall Mount Black Web Belt w/ Mounting Hardware
**Meets SAE J2036 Standards*

****SOME BELTS ARE AVAILABLE WITH NORMALLY OPEN CIRCUITS
CALL FOR MORE INFO***

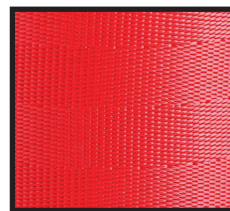
Standard Webbing color is Black. Also available in Yellow, or Red on specific belts.



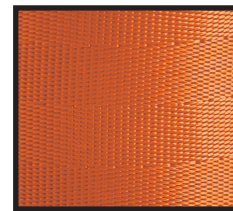
Black
***2, 3, 4, 5
& 6 Pt.***



Yellow
2, 4, 5 & 6 Pt.



Red
***2, 3, 4, 5
& 6 Pt.***



Orange
2 & 3 Pt.

COLOR OPTIONS

SEAMLESS

Morbern New Dauphine Vacuum Form

DA304
Cobalt
1007

DA314
Desert Rose
1015

DA322
Ash
1004

DA324
Gun Metal
1009

DA300
Black

Spradling International Vacuum Form

Blue Ridge
6903

Port
6902

Dove
6901

Gun Metal
6904

Naugahyde Formfit 2 Vac Form

Slate Blue
XL2078

Claret
XL2083

Dove
XL2081

Gun Metal
XL2079

Royal
XL2080

Forest
XL2086

SEWN

Morbern

DU-116
Cobalt
1201

DU-144
Desert Rose
1202

L6758
Light Grey
1200

L6057
Medium Dark Grey
1210

Spradling

Blue Ridge
8572

Port
8533

Orange
9431

Dove
8567

Gun Metal
8539

CUSTOM COLORS AVAILABLE ON REQUEST

Due to printing limitations the colors shown here may not match actual vinyl exactly. Check sample swatches for exact colors.

SPECIFICATIONS

- FLAMMABILITY: CALIFORNIA FIRE REGULATION AUTOMOTIVE (FMVSS-302)
- DURABILITY EXCEEDS INDUSTRY ACCEPTED BY WYZENBEEK TEST STANDARD FOR ABRASION
- ANTI-BACTERIAL/ANTI-MICROBIAL TREATMENTS
- -25° F COLD CRACK RESISTANCE, FEDERAL STANDARD 191A 5874
- ANTI-STATIC FINISH
- SULFIDE STAIN RESISTANT
- OIL STAIN RESISTANT
- WIDTH: 54"

CARE & CLEANING INSTRUCTIONS

Vinyl has been designed so that difficult stains can be cleaned without having to use strong active solvents such as nail polish remover or diluted solutions of acetone and water. Follow the ensuing instructions carefully for the best long-term results. **NOTE** For best results, immediate attention is required for severe stains.

IT IS RECOMMENDED THAT EACH STAIN IS CLEANED IN A STEP-WISE MANNER USING THE FOLLOWING SEQUENCE:

STEP 1

Regular cleaning. Dirt and grime. Use mild soap and water, then fresh water rinse. Cleaning frequency depends on use. As a minimum, please clean weekly.

STEP 2

Stubborn stains. Crayon, eye shadow, chocolate, blood. Wipe using a soft cloth or soft brush. Use detergent cleaners such as Formula 409 or Fantastik. Rinse with clean water and wipe dry.

STEP 3*

More difficult stains. Ballpoint pens, lipstick, mustard, tar or asphalt. Carefully clean the stained area with lighter fluid or rubbing alcohol. Carefully rinse with clean water and dry.

***CAUTION** Exercise care as these solvents are flammable. Use only small quantities of solvents and keep clear of any sources of ignition. Wear protective gloves and ensure cleaning takes place in a well ventilated area.