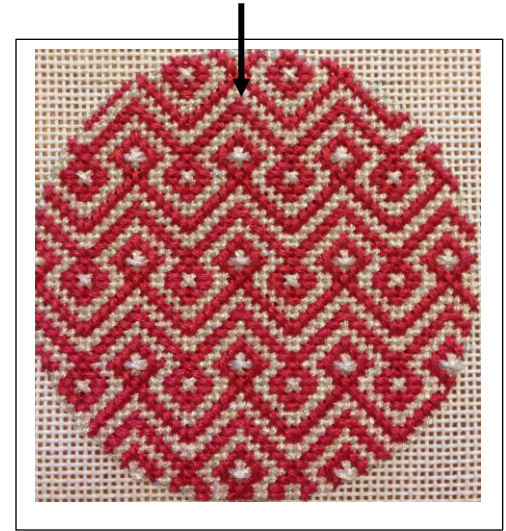


Colonial Needle Presents

Son of a Stitch - SOS1017

Stitch and Thread Suggestions

By
Cynthia D. Thomas



I used one skein, card or spool unless indicated otherwise.

Colonial Needle/Presencia

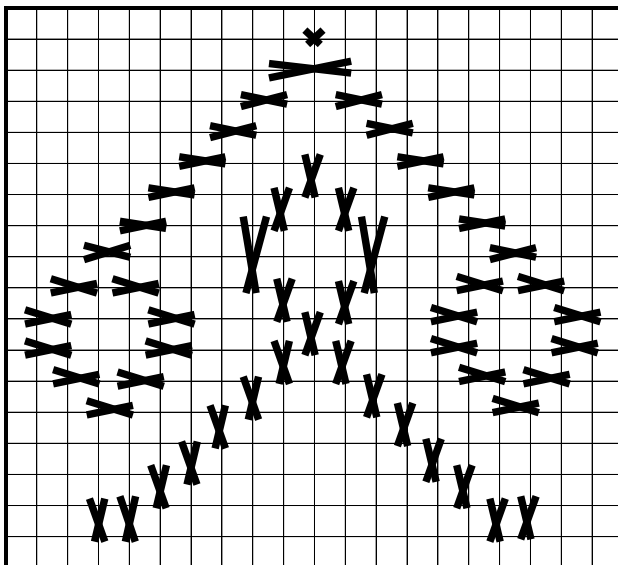
Mouline

1661 – Deep Rose

Kreinik Manufacturing Co.

#12 Braid

032 - Pearl



Note: The arrow on the picture at top of page represents the single cross stitch at the top of this diagram.

Work all pink lines using cross stitch and elongated cross stitch to cover paint. Some will be 1x1, 1x2 or 1x3 using 3 ply of Presencia Mouline 1661.

Fill in between rows with Kreinik #12 032 – 1 strand – Continental.

Motifs inside open pink space are: 2x2 Cross Stitch or 3x3 Star shape.

