

Colonial Needle Presents

Son of a Stitch - SOS1016

Stitch and Thread Suggestions

By
Cynthia D. Thomas



I used one skein, card or spool unless indicated otherwise.

Access Commodities

Accentuate

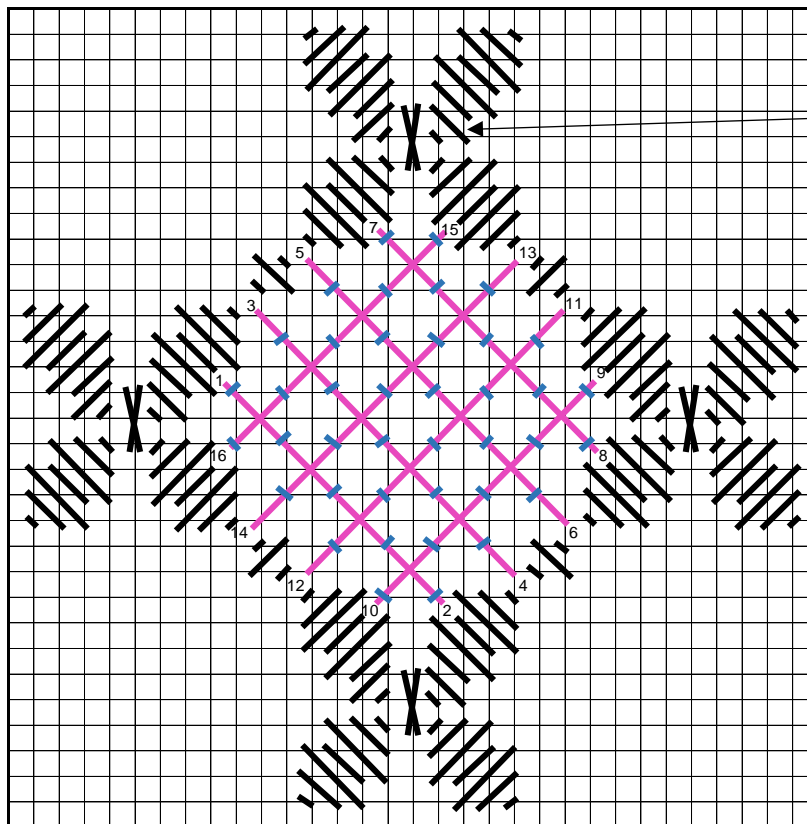
282 – Green, blue, fuchsia, gold sparkle

Colonial Needle/Presencia

Mouline

0001 – White

1661 - Dark Rose



This motif has two 2x2 slanted stitches which are not on the bottom motif.

White lines (these are represented by black lines on diagram on page 1) – Presencia Mouline 0001 – 3 ply – Slanted Gobelin with 1x3 cross stitch. Note: The top half of the motif is different than the bottom half of the motif see arrow above.

Pink: Using Presencia 1661 – 3 ply – Lay in the trellis for the laid filling using the numbering shown in the diagram in for the pink lines. Note: I wrapped the stitch on the back rather than lay economy method.

Tie down the pink lines with 2 strands of Accentuate 282 -using continental stitch. See blue lines on diagram. Hint: I used one strand of Accentuate, threaded it through the needle and tied a small knot holding the 2 ends together and ran it under the stitches on the back to anchor.