

Colonial Needle Presents

Son of a Stitch - SOS1012

Stitch and Thread Suggestions

By
Cynthia D. Thomas



I used one skein, card or spool unless indicated otherwise.

Colonial Needle/Presencia

Mouline

0001 – White

3950 – Turquoise

Renaissance Designs.

Sprinkles-lite

022 – Sea Grass

Sundance Designs

Beads 14/0

284 – White

YLI Manufacturing Co.

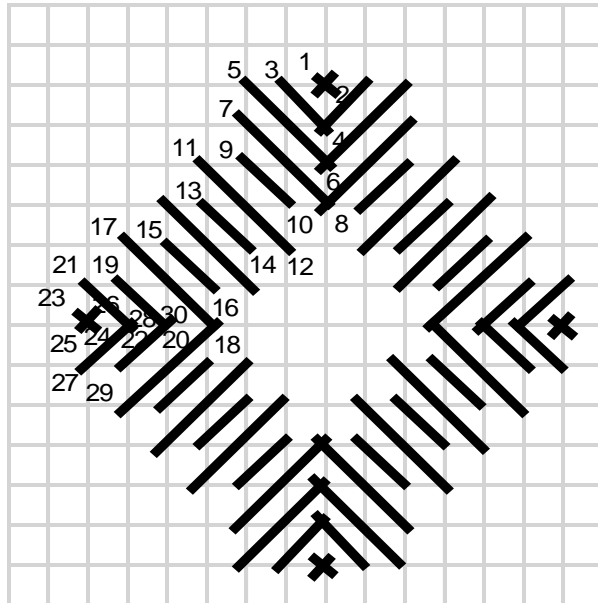
Shimmer Blend

023 – White/Opal

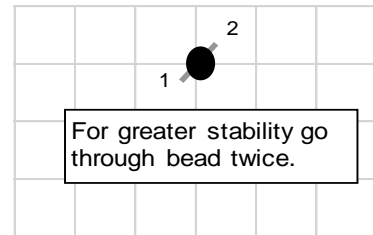
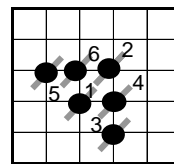
Miscellaneous

Gutermann Invisible thread or your favorite beading thread.

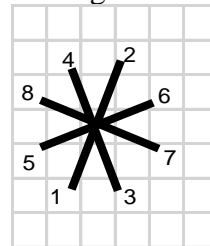
Turquoise Diamonds: Presencia 3950 – 3 strands – Fern Stitch Variation.



Center is filled with Sundance Beads 14/0 284 using Basketweave technique and 1 strand of Gutermann Invisible doubled in the needle.



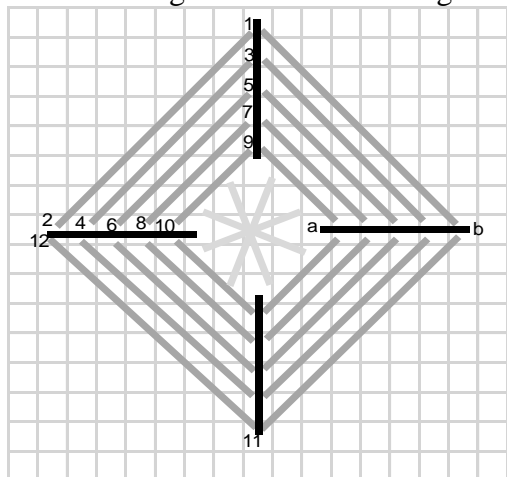
White Diamonds: Centers – Presencia 3950 – 3 strands – 2x4 star shape. Note: Shown on diagrams as lightest gray lines.



I used a different pattern for each row, however, you can use 1 pattern for the entire ornament.

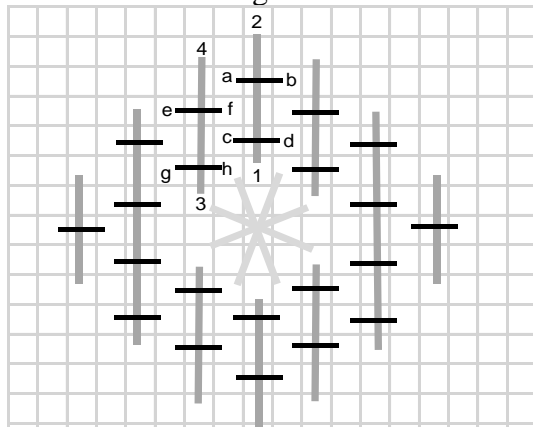
Gray lines - Presencia 0001 – 4 strands
 Black lines – Shimmer Blend 023 – 1 strand

Row 1 – Diagonal lines with straight stitches



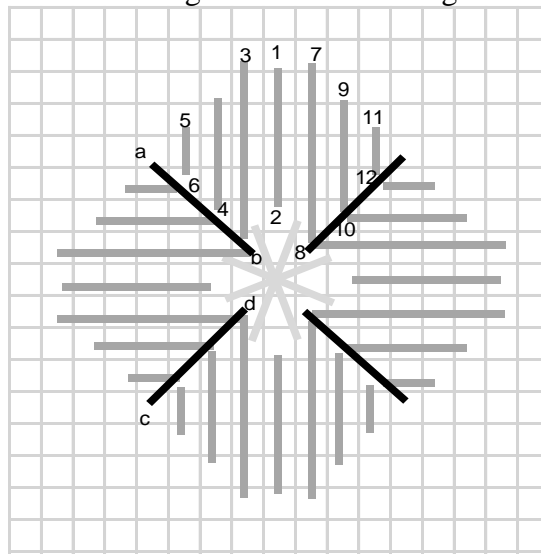
1. Work the diagonal gray lines first.
2. Work the vertical and

Row 2 – Laid filling



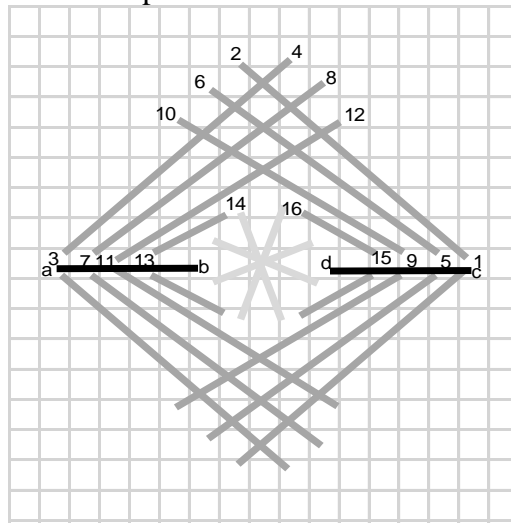
- Use 2 needles. Lay one gray line first (1-2), then tie down with second needle (a-b). Repeat for

Row 3 – Straight stitches with diagonal lines



1. Work the dark gray vertical and horizontal lines.
2. Work the black diagonal

Row 4 – Sprats head variation



1. Work the dark gray numbered lines.
2. Work a long horizontal stitch from a-b, c-d.