

# Colonial Needle Presents

## *Son of a Stitch - SOS1010*

Stitch and Thread Suggestions

By  
Cynthia D. Thomas



I used one skein, card or spool unless indicated otherwise.

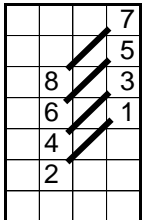
Colonial Needle/Presencia  
Mouline  
1139 – Antique Blue

Kreinik Manufacturing Co.  
#12 braid  
032 – Pearl

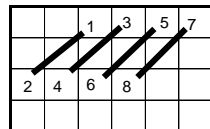
Sundance Beads  
Size 14 Hex 250 - Crystal

**White lines:** Kreinik #12 032 – 1 strand – Continental.

**Blue:** For vertical and horizontal lines over 2 threads - Presencia 1139 – 3 ply – Slanted Gobelin.

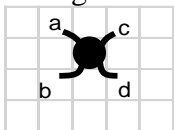


Vertical

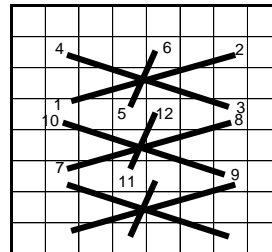


Horizontal

Where lines intersect attach Sundance Beads Size 14 Hex 250 using 2 ply Presencia 1139 and method below. Note: Thread attaching bead forms part of the design and will show through clear bead.



Rectangles – Presencia 1139 – 3 ply. Note: I worked two different patterns on the sample alternating the rows, you may choose how you want to do yours or use one pattern for the entire round.



And/or

