

Colonial Needle

Presents

Son of a Stitch - SOS1006

Stitch and Thread Suggestions

By

Cynthia D. Thomas



I used one skein, card or spool unless indicated otherwise.

Colonial Needle/Presencia

Mouline

0001 – Snow White

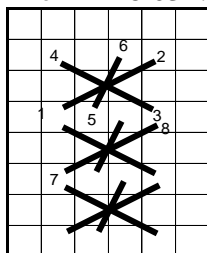
4379 – Lite Jade Green

Kreinik Manufacturing Co.

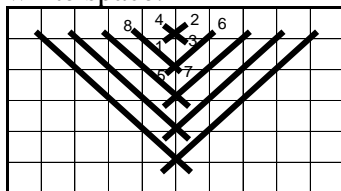
#8 braid

032 - Pearl

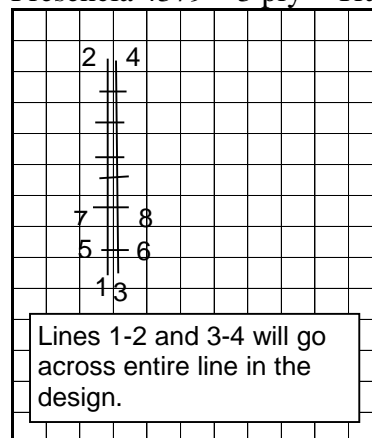
White horizontal rows: Presencia 0001 – 3 ply; Kreinik #8 032 – 1 strand – Hitched Cross. Note: The diagonal stitch (5-6) is Kreinik #8 032.



White v shapes – Presencia 0001 – 3 ply – Fern. Note: Diagram shows compensation but only appears on one spot on canvas, rest of Vs are only last stitch repeated to fill white space.



Green: Center line on green stripes – Presencia 4379 – 3 ply – Traméd line.



Sides – Presencia 4379 – 3 ply – Slanted Gobelin. Note: Right side is shown, reverse slant for left.

