

CASTECH

FR3210M

UV HIGH SPEED

ROLL-TO-ROLL PRINTER



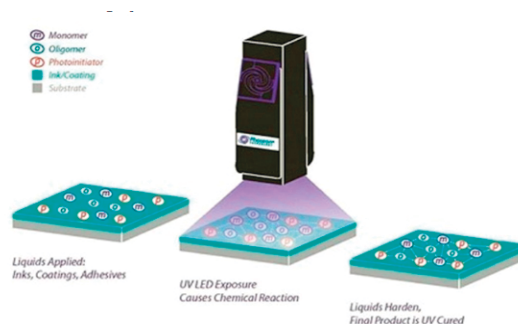
FR3210M

The FR3210M UV printer is basically a hybrid design system comes with 3.2M Belt-conveying feeding system and vacuum suction for roll to roll printing. This table feed design makes it easy to load a 3.2M flexible material by a single person. The vacuum system make it easy to print various size of flexible media without tensioning system or pinch roller hold down. It can print on stretchable materials like PVC flex and fabric without the need to adjust tensioning. It can print from the front edge without the need to leaving media (1-2M) for the tensioning system. The printer can be equipped to the max of 3 row Kyocera or 4 row Konica KM1024a or 6 Row Ricoh G6 depend on the customer's speed requirement. The independent front and rear take-up and feeding system can take-up and feed one roll of 3.2M or 2 rolls of 1.6M of material.

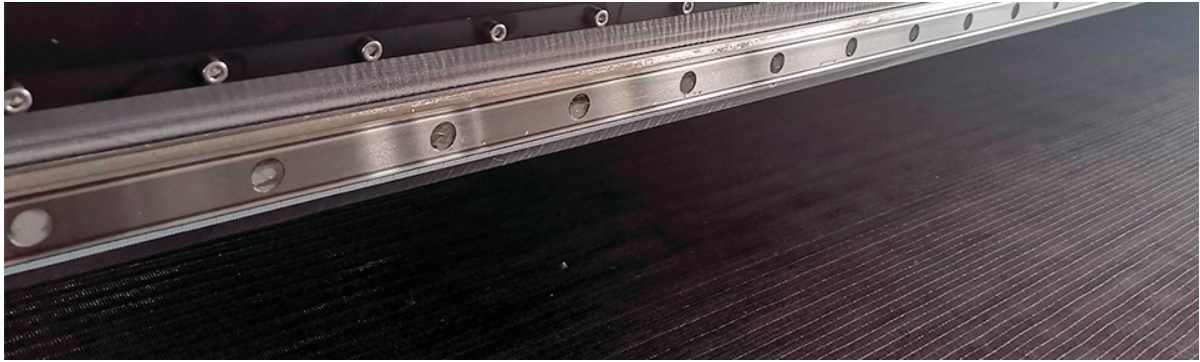


Built-in light box for instant viewing of backlit printing.

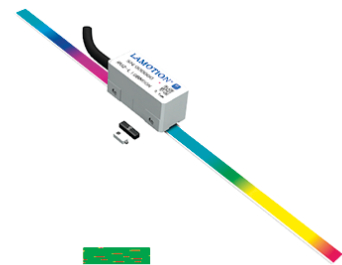
Reliability meets performance



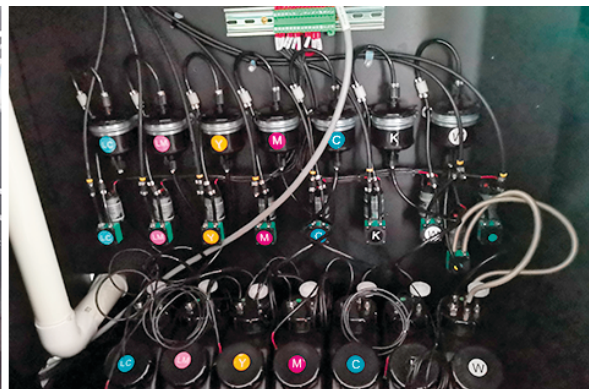
Ink curing system is using a water-cooling Led UV system, which has longer lifetime, silence, less heat. With the low temperature lamp, users have larger variety of heat sensitive media.



FR3210M UV printer designed with a 3.2M conveying feeding belt with numerous vacuum zone which makes it possible for different various size roll to roll printing. The Belt is driven by high precision harmonic reducer motor to ensure the feeding belt is in stable motion.



The X axis is installed with THK LM guide and metal encoder strip to provide high precision to the high speed carriage movement. The conveying belt is driven by dual Delta motor with metal raster, which can control deviation within 1um.

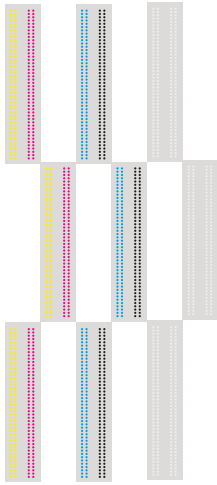


The negative air pressure ink system ensures consistent ink flow to the printheads during printing. Each ink tank is equip with a ink low sensor to prevent ink tank empty.

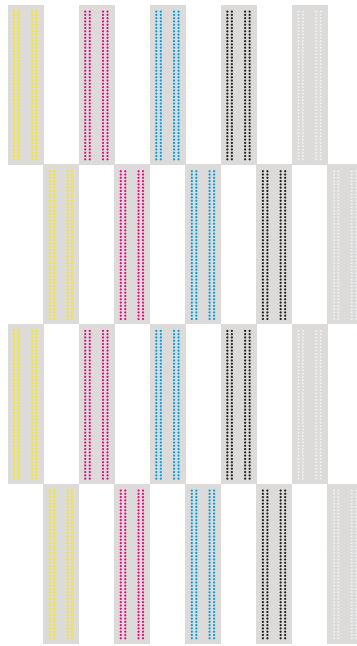
FR3210M						
Head Option	Konica 1024i (6PL)	Speed (sqm/h)		Kyocera (3.5PL)	Speed (sqm/h)	
Resolution	726*720DPI	4pass (4 row)	122	726*1200 DPI	4pass (3 row)	140
	726*1080DPI	6pass(4 row)	90	726*1800 DPI	6pass(3 row)	95
	726*1440DPI	8pass(4 row)	61	726*2400 DPI	8pass(3row)	70
	Ricoh G5 (7PL)	Speed (sqm/h)		Ricoh G6 (5PL)	Speed (sqm/h)	
Resolution	//	//	//	635*600 DPI	4pass (6 row)	173
	635*900 DPI	6pass(6 row)	86	635*900 DPI	6pass(6 row)	124
	635*1200 DPI	8pass(6 row)	59	635*1200 DPI	8pass(6 row)	86

Printheads configuration, Resolution, passes and printing speed.

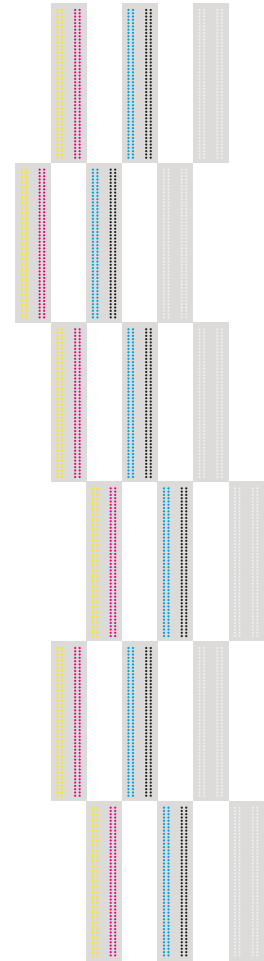
Kyocera CMYK + W
3 row arrangement



Konica 1024A CMYK+W
4 rows heads arrangement



Ricoh CMYK +W
6 rows arrangement



Specifications:

Model	FR3210M
Category	UV Roll-To-Roll
Printhead	RICOH GEN6, KONICA 1024A/I, KYOCERA
Print Technology	Drop-On-Demand Piezo Electric Inkjet
Maximum Print Width	3200mm
Media Thickness	35mm
Ink Type	UV Ink (Medium/Flexible)
Curing System	UV LED (Water Cool)
Carriage Drive	Linear Motor
Rip Software	FlexiPrint/Onyx RipCenter
Printhead Control	Temperature & Voltage Adjustable
Operating Environment	Room Temp: 20°C to 28°C Humidity: 40% to 60%
Power Requirements	50/60Hz, 220V(10%)> 30A Single Phase
Equipment Dimensions	5890 x 1500 x 1580mm 2685Kg
Warranty	One year limited warranty

CAS TECHNOLOGY PTE LTD

A 10 Ubi Crescent
#05-52 Ubi Techpark (Lobby C)
Singapore 408564

T (65) 6742 8355
F (65) 6742 9897
W www.castechtechnology.com.sg