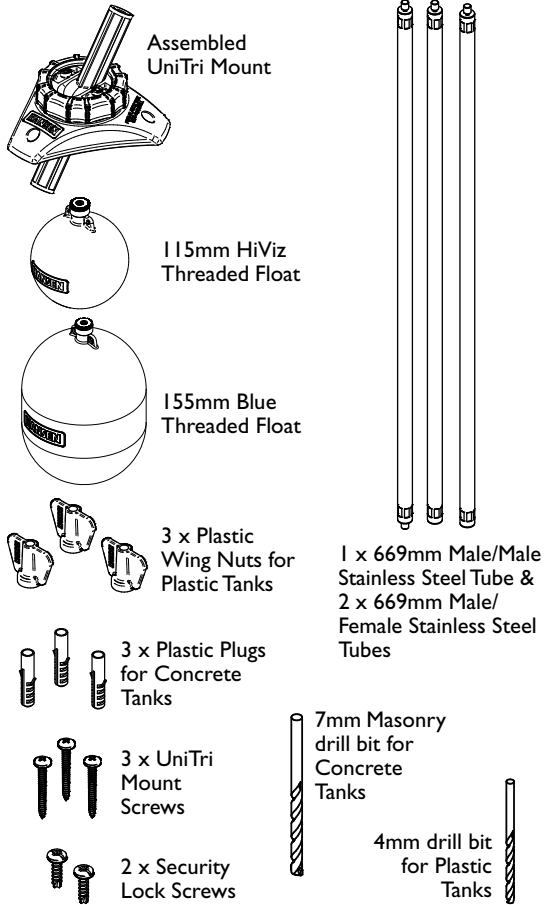


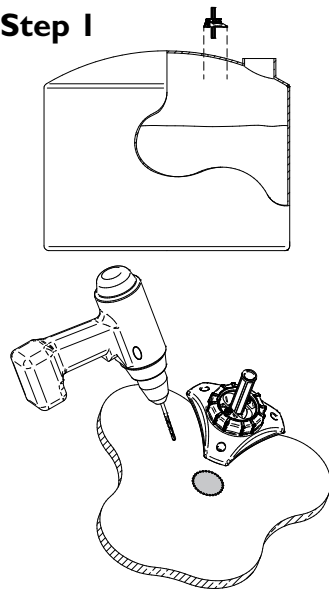
Thank you for purchasing a Hansen Level Alert Installation Instructions

Check your pack Includes:



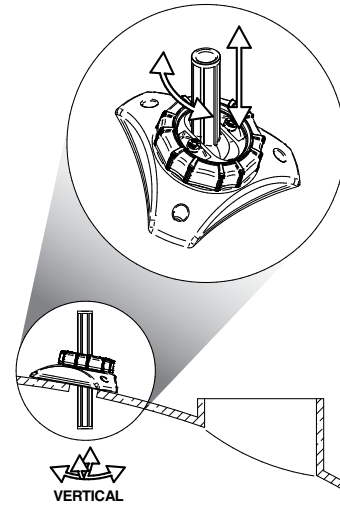
HDB153 1504

Step 1



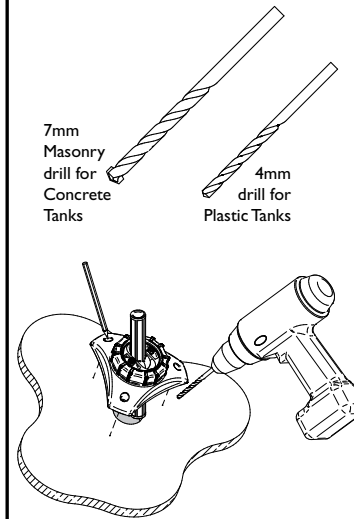
Choose a mounting position close to an inspection cover/hatch. Mark then drill a hole or series of holes larger than the Guide Tube (refer to Step 3 for correct drill selection).

Step 2



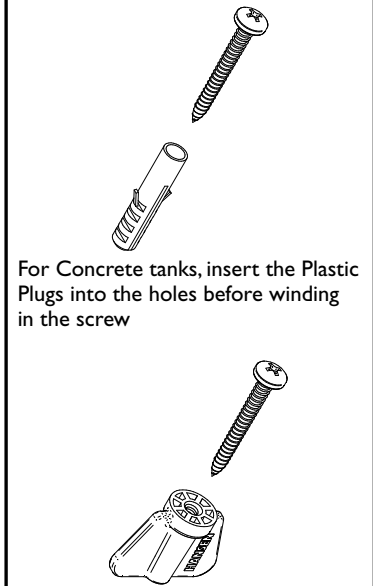
Place the assembled UniTri Mount in the hole, loosen the Cap Nut, lift and rotate the Guide Tube to achieve vertical position then lightly tighten the Cap Nut.

Step 3



Select the correct drill for either a plastic or concrete tank. Using the UniTri Mount as a template mark and then drill three holes in the tank to match the UniTri Mount.

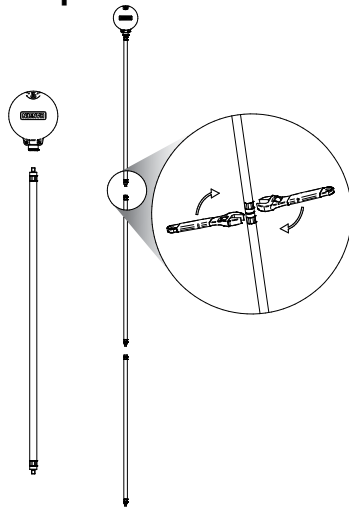
Step 4



For Concrete tanks, insert the Plastic Plugs into the holes before winding in the screw

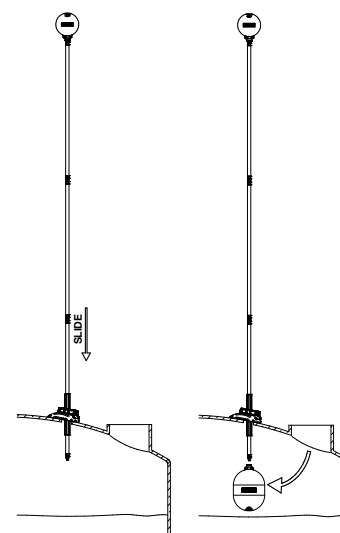
For Plastic tanks, hold the Wing Nut in place inside the tank while winding in the screw from the outside

Step 5



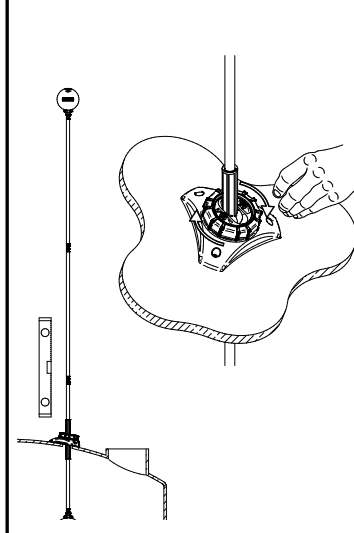
Screw the HiViz Float on one end of the Male/Male threaded Stainless Steel Tube. Screw additional Stainless Steel Tubes as required onto the first Tube then tighten all Tube joints with a suitable spanner.

Step 6



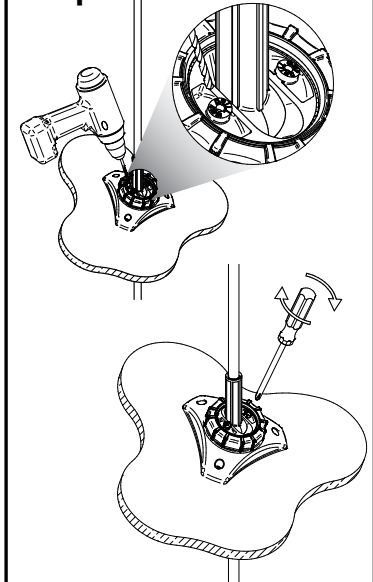
Slide the Stainless Steel Tube assembly through the mounted Guide Tube, reach inside the tank and attach the Blue Float to the other end of the Stainless Steel Tube.

Step 7



With a Spirit Level ensure the Stainless Steel Tube is plumb/vertical then firmly hand tighten Cap Nut.

Step 8



Drill a 4mm hole in each of the security housing locations, insert the security screws and tighten.

The Level Alert is protected by intellectual property rights owned by the Hansen group of companies in New Zealand, Australia & other countries, including NZ patent 596360, NZ registered design 415007, Australian patent 2012203010 and Australia registered design 340061. HANSEN is a trade mark of the Hansen group of companies.

Try these other *Reliable* products from **HANSEN™**

High Performance Reservoir / Tank Valve *Leveller Valve*

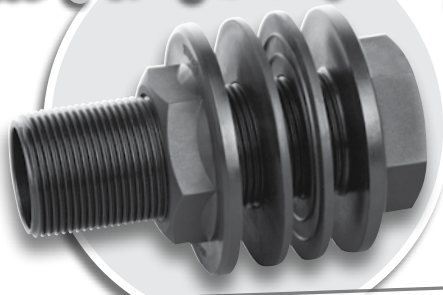


NEW

- High Performance, Cost Effective Reservoir/Tank Valve (1275 lpm at 12 bar)
- Suitable for High/Low Pressure operations - from 0.2bar to 12 bar
- Delivers high volumes of water quickly with unrestricted full flow
- Simple & Reliable



Proven *True Fit Tank Fittings*



- An extensive range of fittings in sizes 15mm to 100mm (1/2" to 4")
- Precision Heavy Duty Tapered Threads give a Strong Reliable Seal
- Manufactured from non corrosive, UV Stabilised materials
- Potable water approved

Dependable **Full Flow Ball Valves**



Frost Friendly

See our website for details and testimonies

- Versatile Full Flow Ball Valve
- Lightweight and strong
- Manufactured from non corrosive, UV Stabilised materials
- Potable water approved
- High pressure 16 Bar rated
- Positive "click" smooth open/close action



Hansen Full Flow Ball Valves are individually hand tested using both Air and Water.

Reliable Trough & Tank Valve

Max-Flo Valves

- High Performance, Cost Effective Trough/Tank Valve (29 PSI, 570 lpm)
- Suitable for High/Low Pressure operations - from 0.2bar to 12 bar
- Delivers high volumes of water quickly with unrestricted full flow
- Simple & Reliable



HANSEN *Max-Flo Valves* are rigorously hand tested using Water



visit our website to find out more... www.hansenproducts.com