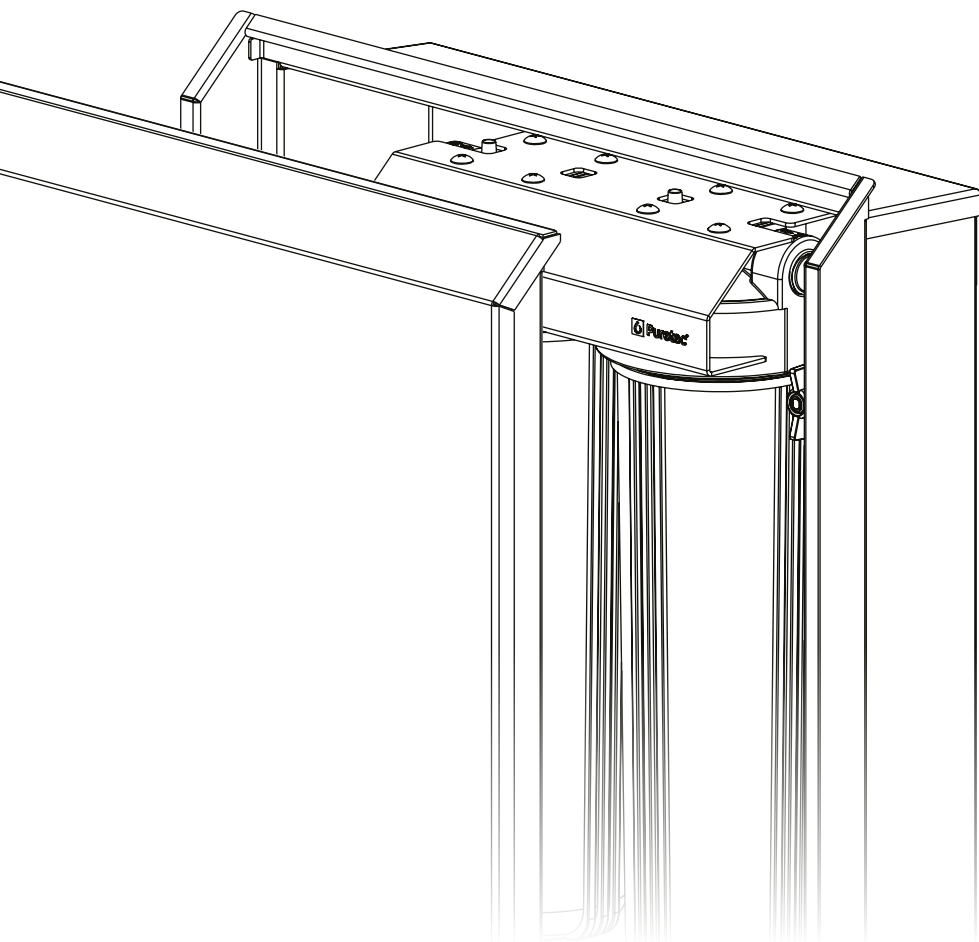




FilterWall

IM2 Series System User Guide



What's Inside

Important Information	3
Preparing Your System	4
Installation Requirements	5
Installation Record	5
Fig. 1 - Parts Diagram, Enclosure	6
Fig. 2 - Parts Diagram, Filter Assembly	7
Builder Plans	8
Installation - Enclosure	26
Installation - Filter Assembly	26
Installation - Filter Cartridges	27
Cartridge Replacement	28
Warranty	30



WaterMark

AS3497

Licence No. WM 74617

Pro-Switch Pty Ltd

IMPORTANT INFORMATION!

Use Guidelines

- Use for mains water supply only.
 - Do not expose the system to temperatures below 0°C, protect from freezing.
 - The system must be installed according to local plumbing codes on the cold water line only.
 - This system requires regular replacement of the filter cartridges to maintain proper operation. Varying chlorine, sediment, or organic substance levels may affect the replacement frequency.
 - Be sure to change the filter cartridges every 6 - 12 months, or whenever you detect a change in taste, odour or a decrease in flow.
 - Minimum operating pressure: 200 kPa
 - Maximum operating pressure: 875 kPa
- Note:** Where line pressure exceeds 500 kPa, an approved pressure limiting device must be installed to comply with Australian & New Zealand Plumbing Standards. A 500 kPa pressure limiting device has been included in the FilterWall system.
- Maximum operating temperature: 52°C
 - Nominal flow rate: 55 Lpm



Caution: Do not use water that is microbiologically unsafe or of unknown water quality without adequate disinfection before the system.

Installation Note: A water filter system/tap, like any product, has a limited life and may eventually fail. Also sometimes failure happens early due to unforeseen circumstances. To avoid possible property damage, this product should be regularly examined for leakage and/or deterioration and replaced when necessary. A drain pan, plumbed to an appropriate drain or outfitted with a leak detector, should be used in those applications where any leakage could cause property damage, and/or the water supply should be turned off if no one is home/present.

INSTALLATION MUST BE COMPLETED BY A LICENCED PLUMBER. FAULTY OPERATION DUE TO UNQUALIFIED PERSONS WILL RESULT IN VOIDED WARRANTY COVERAGE.

Preparing Your System

Thank you for purchasing a Puretec quality product. Puretec systems are designed to run economically for many years, dependent on the initial installation and periodical maintenance.

Please read all instructions carefully as failures caused by incorrect installation or operation are not covered by warranty.

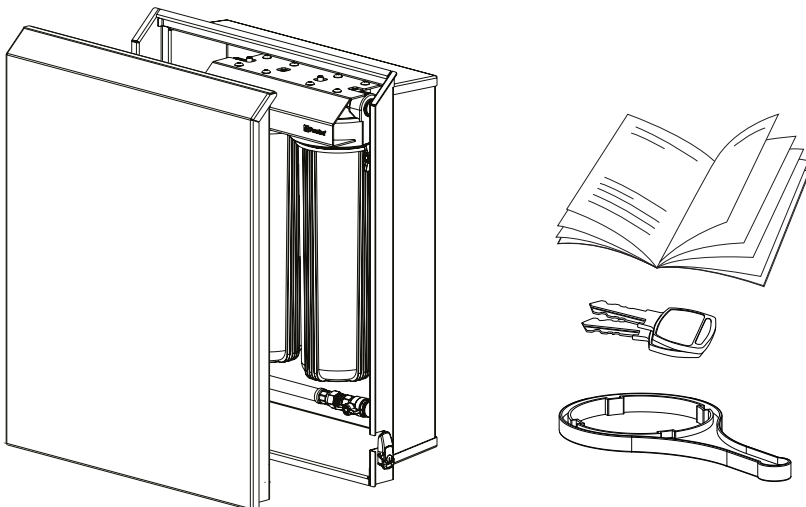
On removing your system from its carton, you should check all the components to ensure all are present and have not been damaged in transportation.

Remove all the packing materials prior to use.

As a responsible manufacturer we care about the environment. We urge you to follow the correct disposal procedure for your product and packaging materials and the disposal of any material according to local laws and regulations.

Depending on your model, you should have the following:

- FilterWall System Enclosure & Filter Assembly (pre-assembled with bypass)
- User Guide
- Spanner
- Set of Keys (for latches)



Installation Requirements

- Suitable installation position on the housing frame between studs and joints (refer to the Builder Plans section and identify the installation option type).
- Connect to the cold water line only (20 mm copper or PEX).
- Ensure supply pressure is between 200 - 875 kPa

Note: Where line pressure exceeds 500 kPa, an approved pressure limiting device must be installed to comply with Australian & New Zealand Plumbing Standards. A 500 kPa pressure limiting device has been included in the FilterWall system.

- Select a suitable inlet connector 20 mm BSPF (not supplied)
- Select a suitable outlet connector 20 mm BSPF (not supplied)

Installation Record

For future reference, fill in the following data:

Product Information	
Model Number:	
Serial / Batch Number:	
Purchased from:	
Date of Installation:	
Installer / Plumber Details:	

Fig. 1 - Parts Diagram, Enclosure

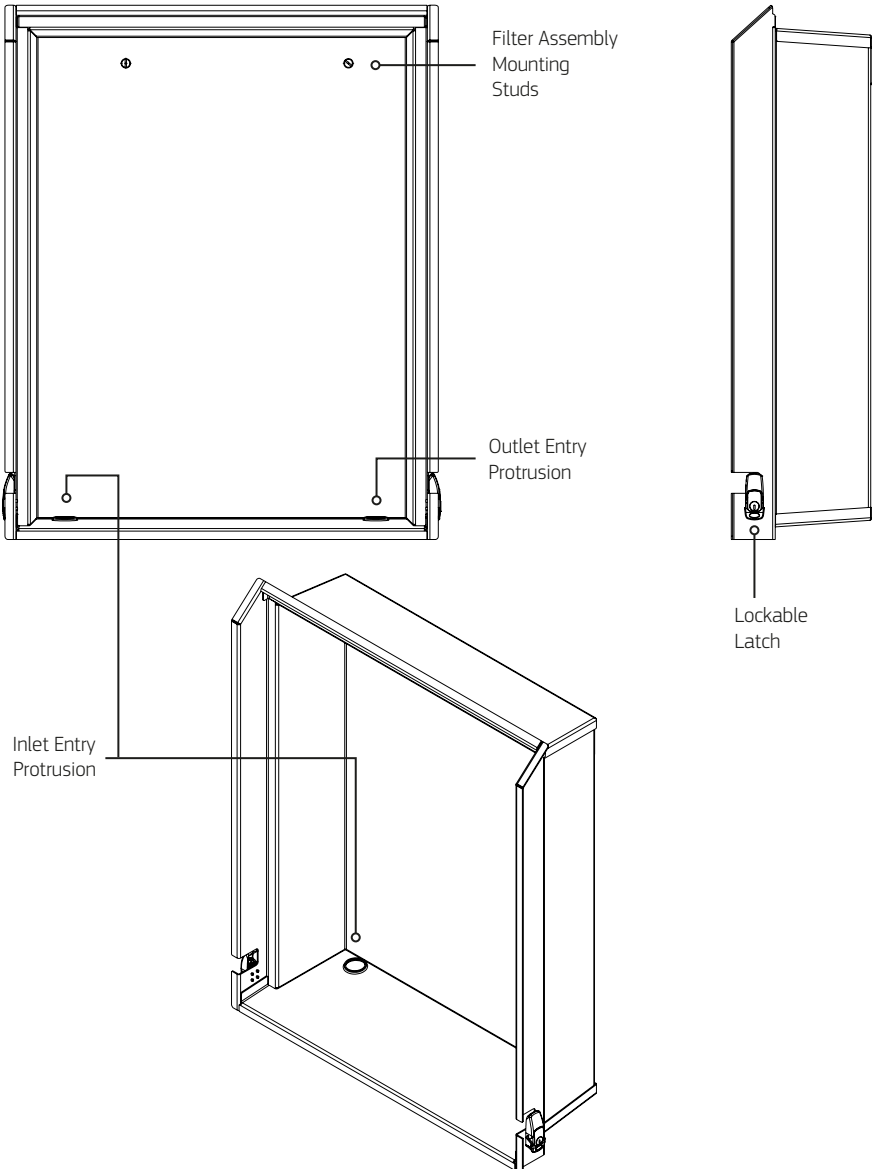


Fig. 2 - Parts Diagram, Filter Assembly

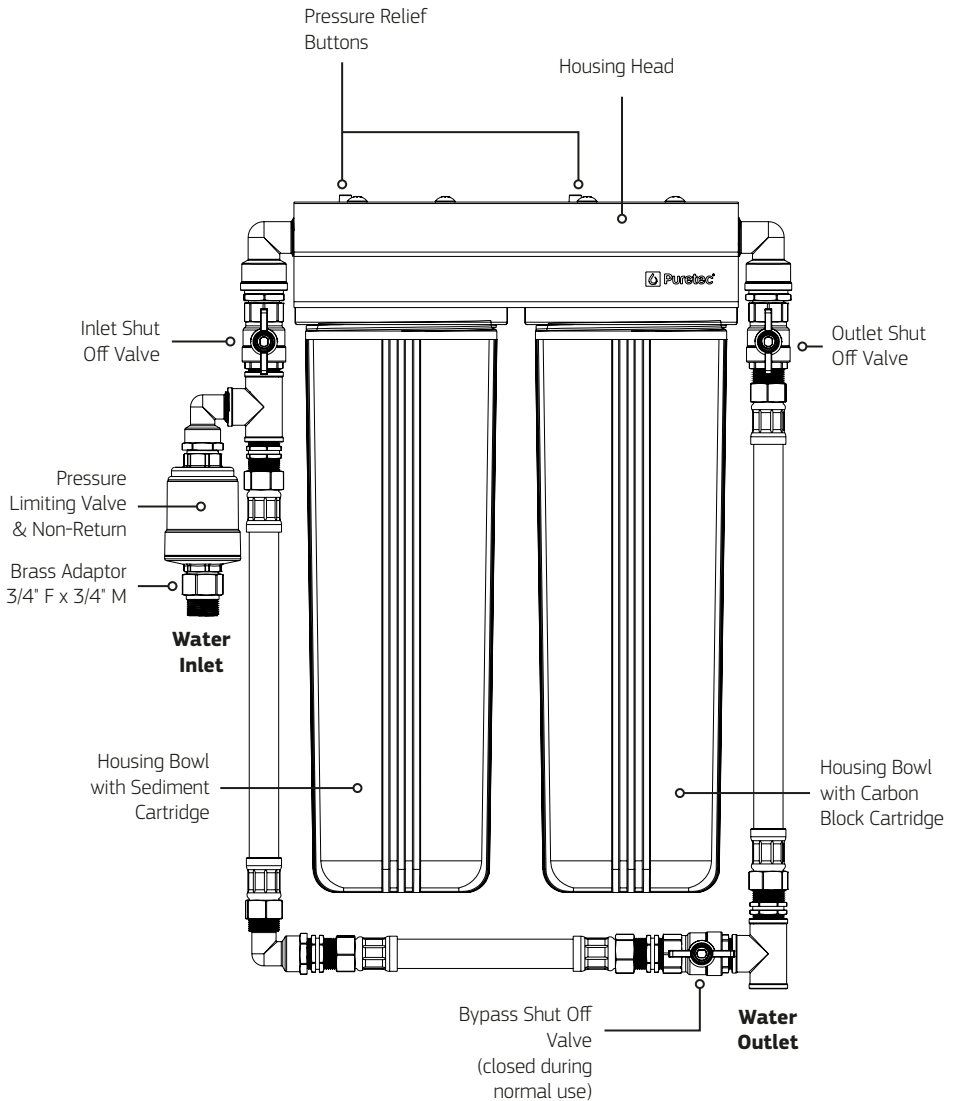
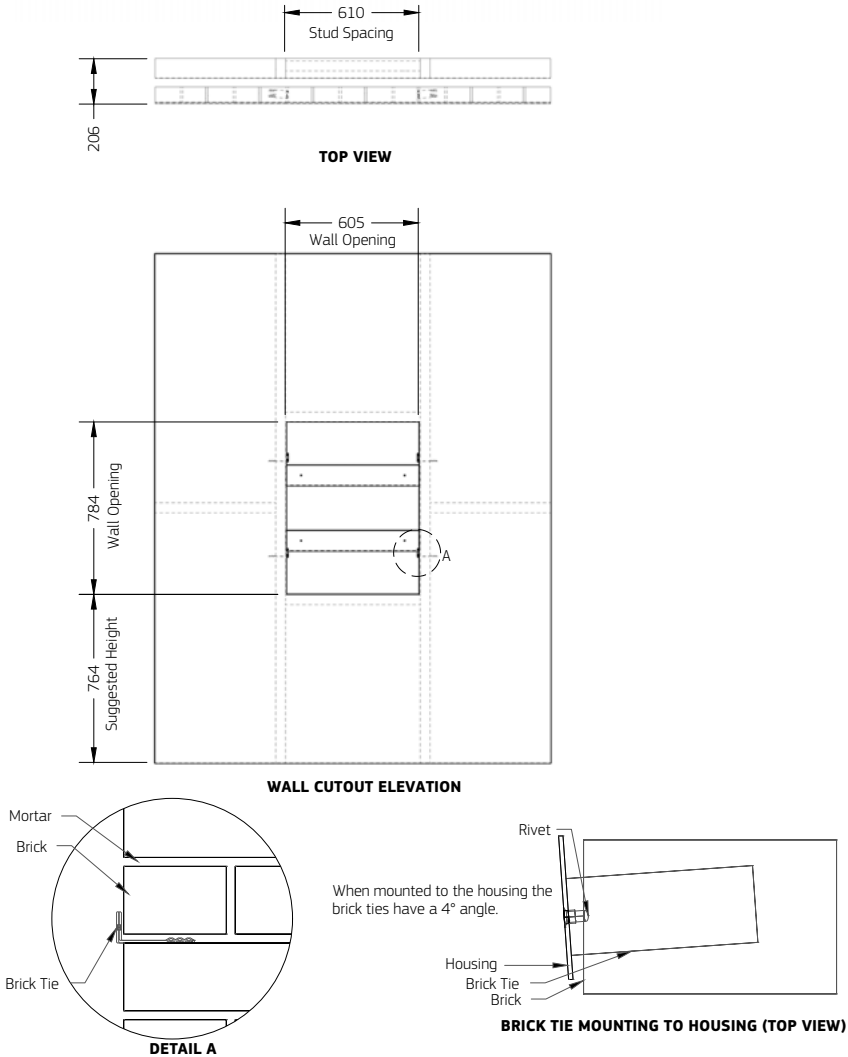
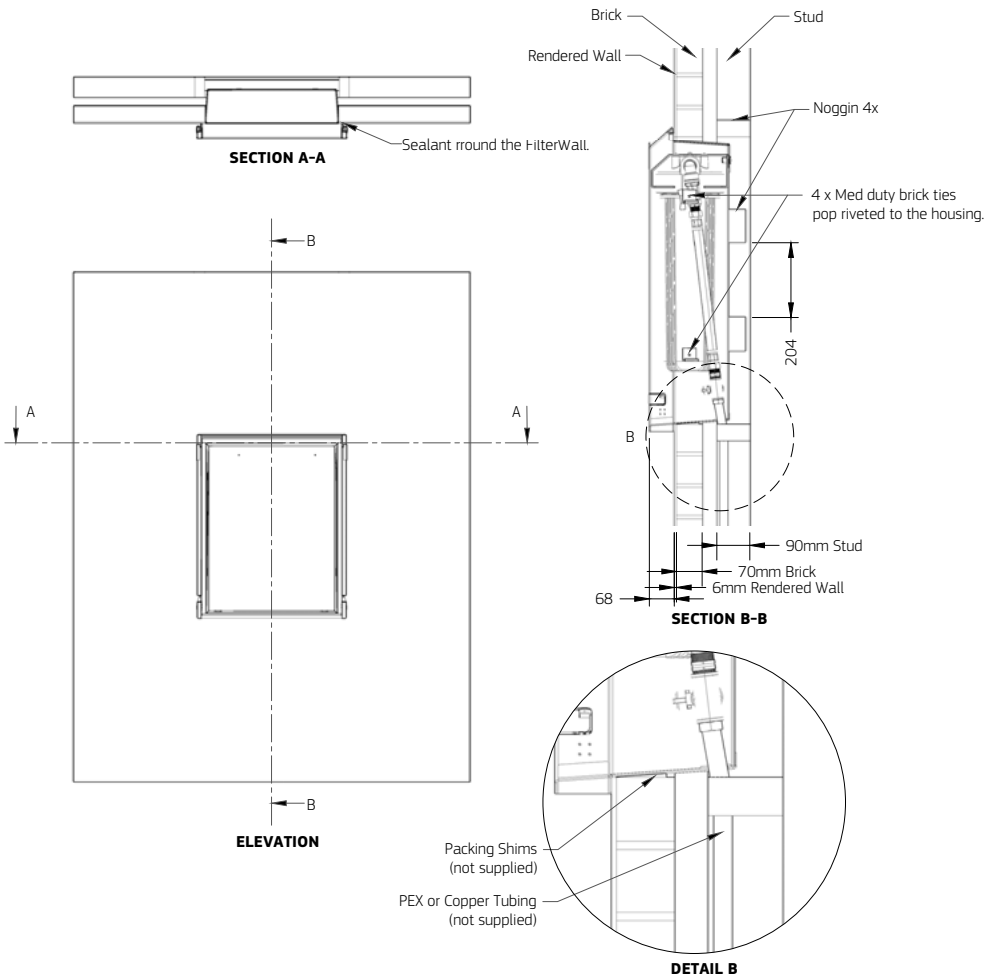


Fig. 3 - Builder Plans for 70mm Rendered Brick, Brick Tie

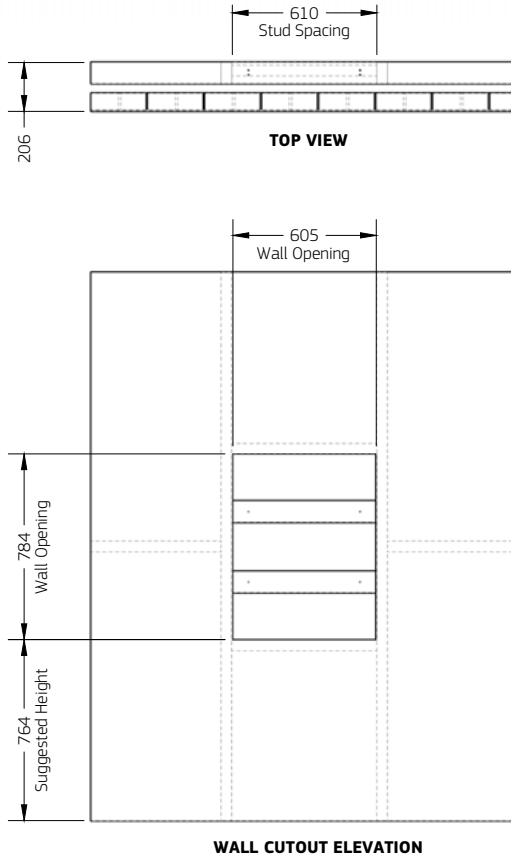




Note: All dimensions are shown in millimetres.

Disclaimer: Example installation shown, individual requirements may vary. Ensure Australian Building Standards are met during installation.

Fig. 4 - Builder Plans for 70mm Rendered Brick, Timber Fasteners



Note: All dimensions are shown in millimetres.

Disclaimer: Example installation shown, individual requirements may vary. Ensure Australian Building Standards are met during installation.

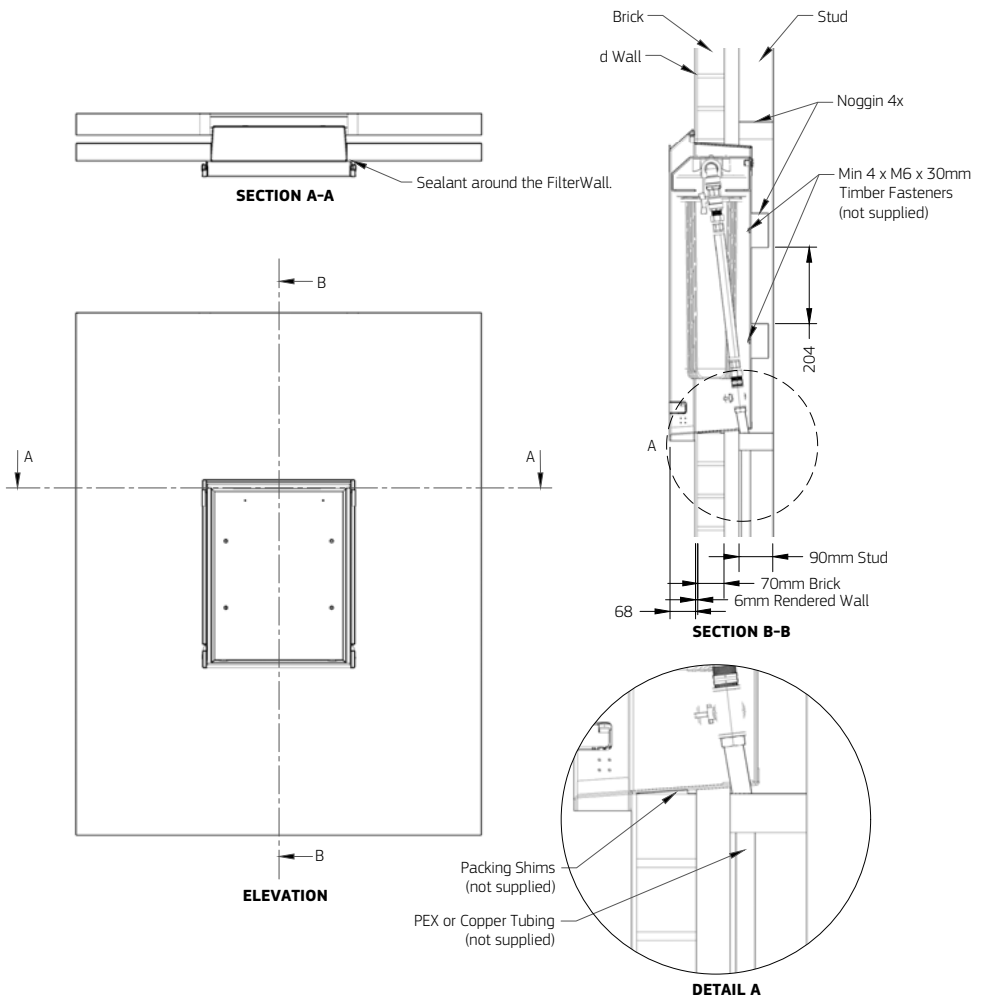
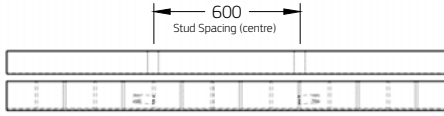
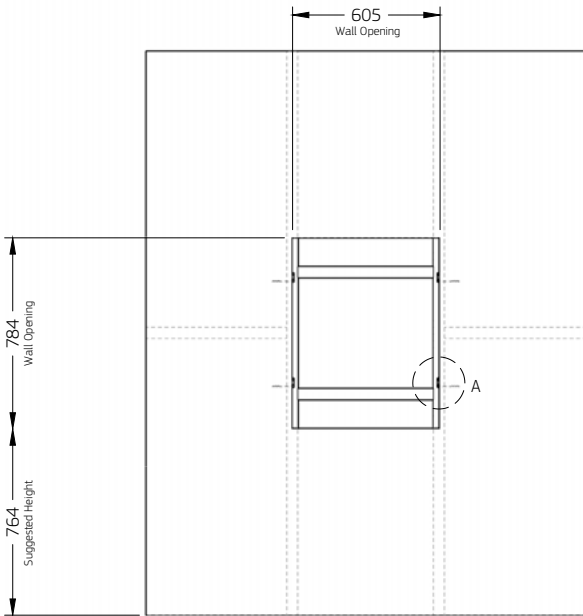


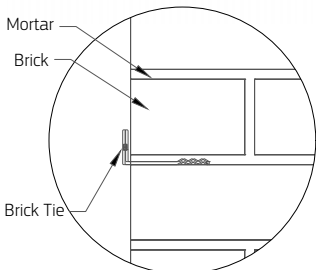
Fig. 5 - Builder Plans for 110mm Rendered Brick, Brick Tie



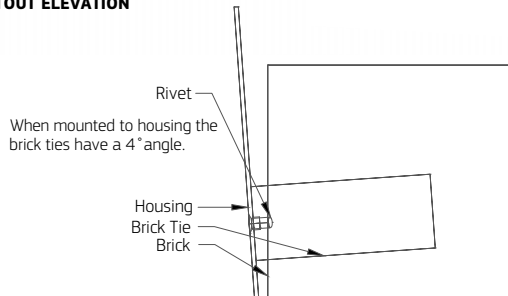
TOP VIEW



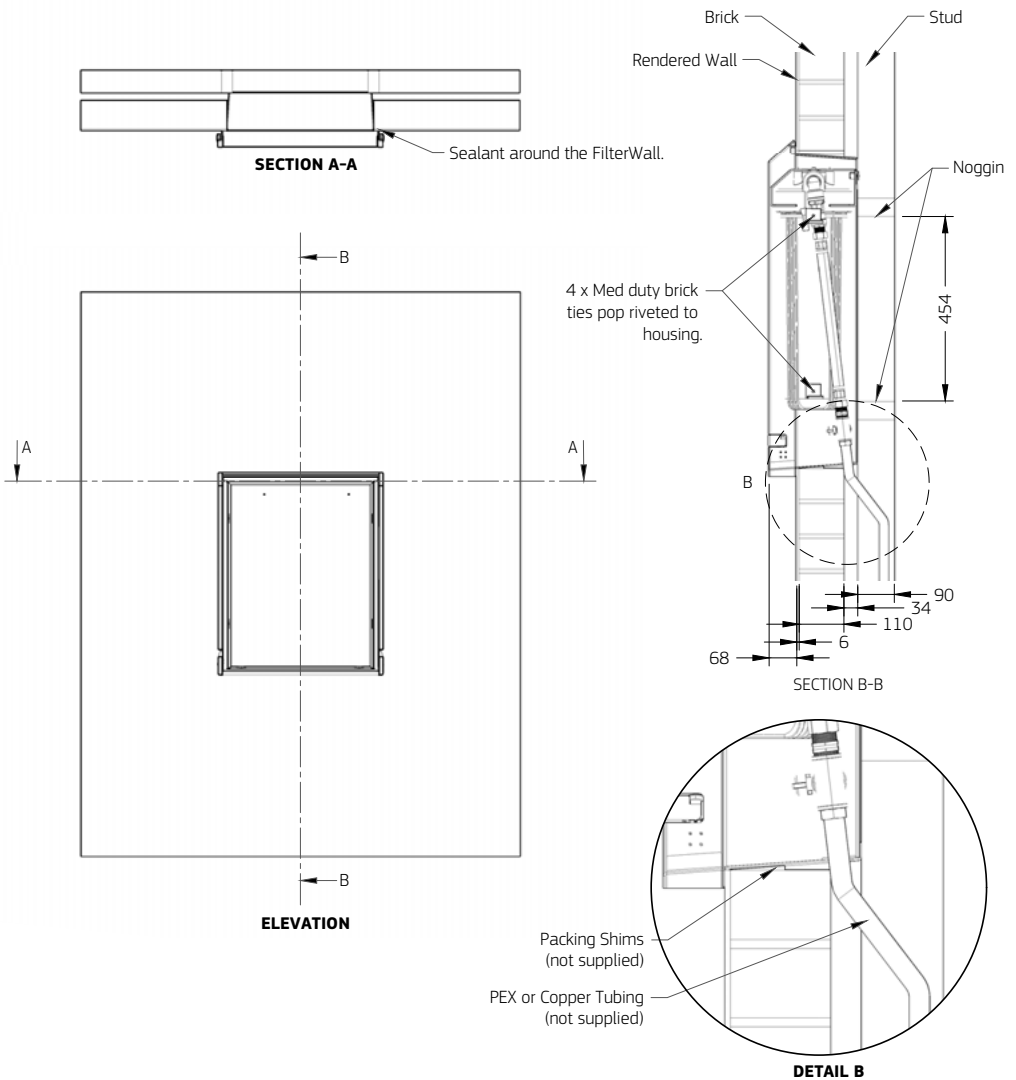
WALL CUTOUT ELEVATION



DETAIL A



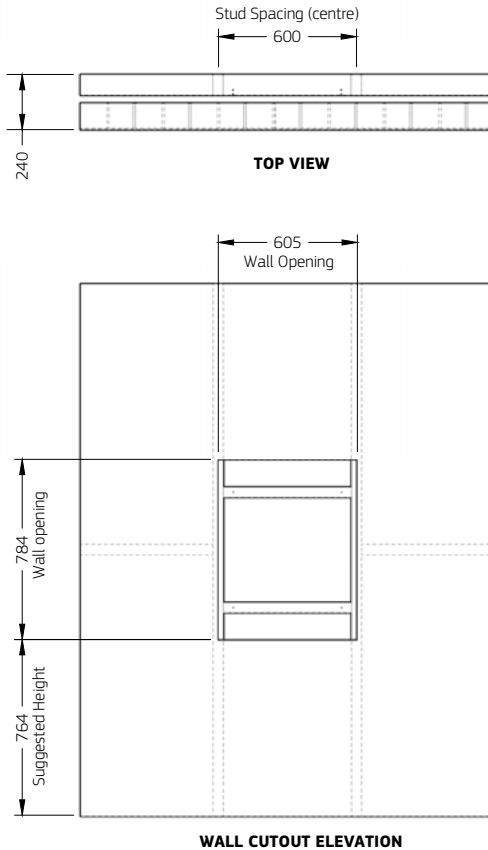
BRICK TIE MOUNTING TO HOUSING (TOP VIEW)



Note: All dimensions are shown in millimetres.

Disclaimer: Example installation shown, individual requirements may vary. Ensure Australian Building Standards are met during installation.

Fig. 6 - Builder Plans for 110mm Rendered Brick, Timber Fasteners



Note: All dimensions are shown in millimetres.

Disclaimer: Example installation shown, individual requirements may vary. Ensure Australian Building Standards are met during installation.

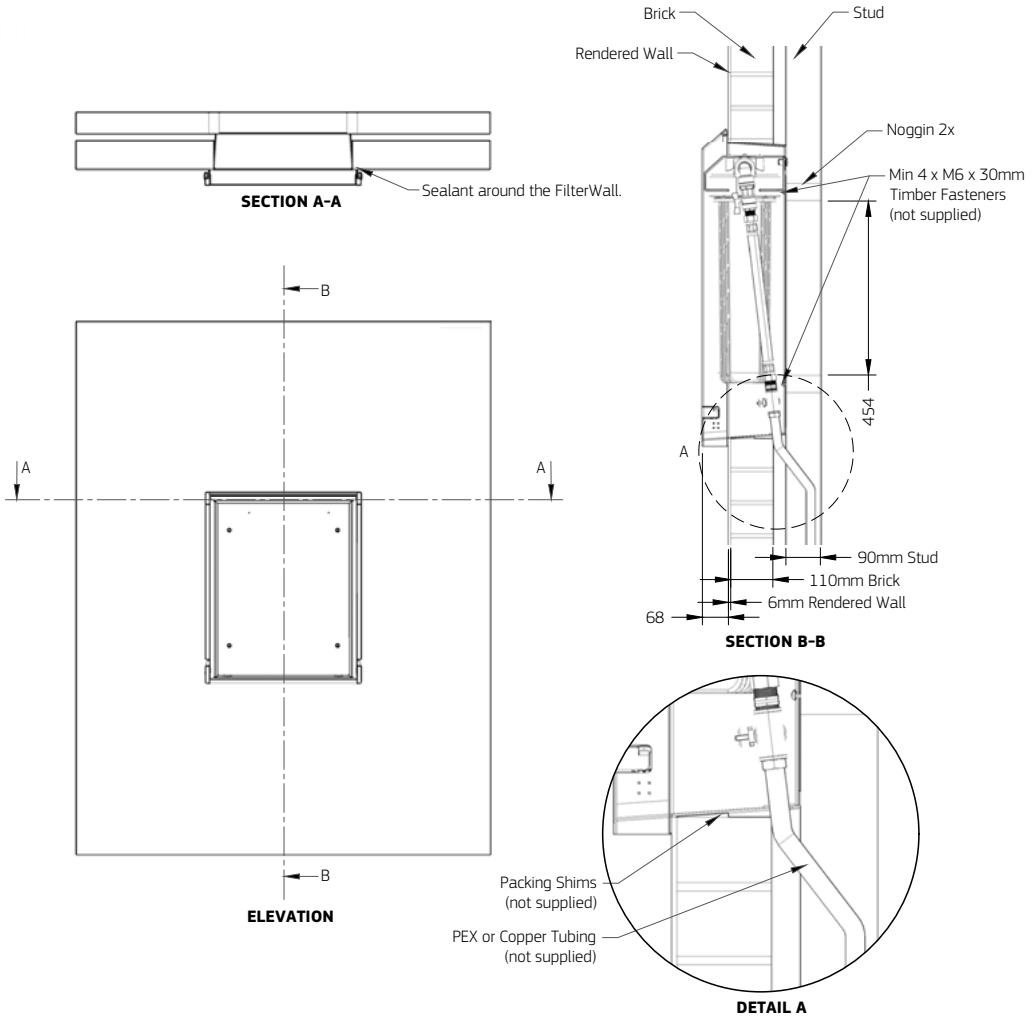
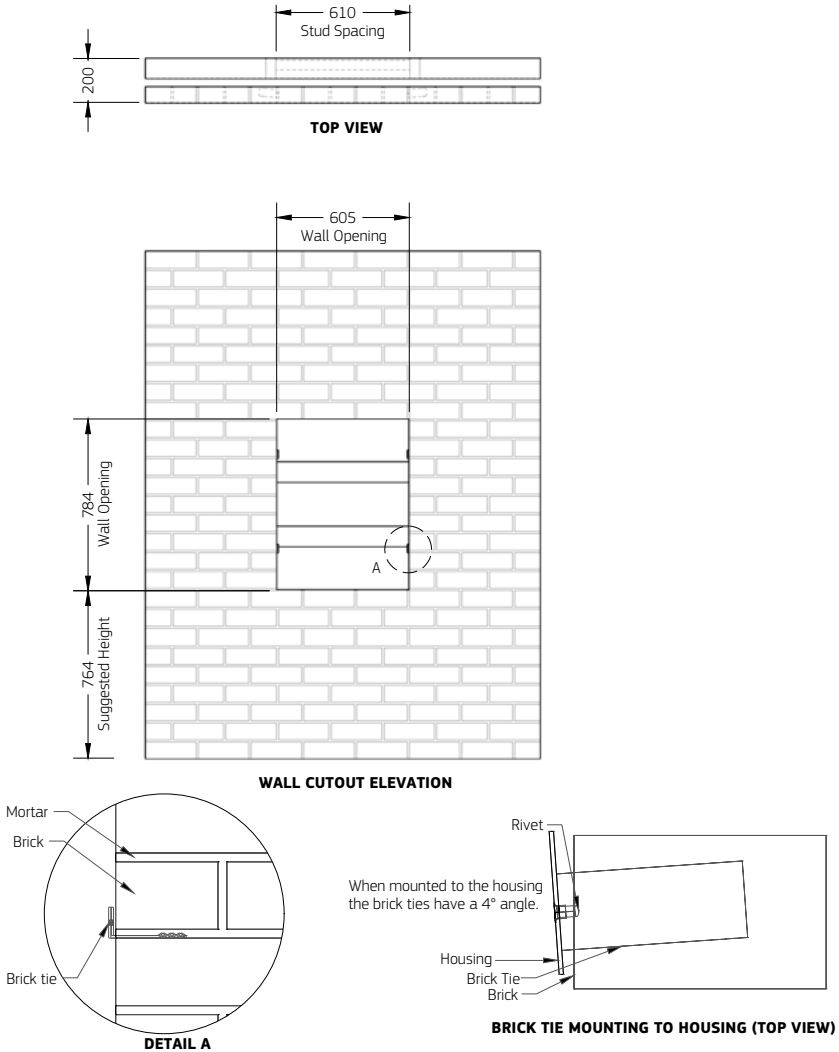
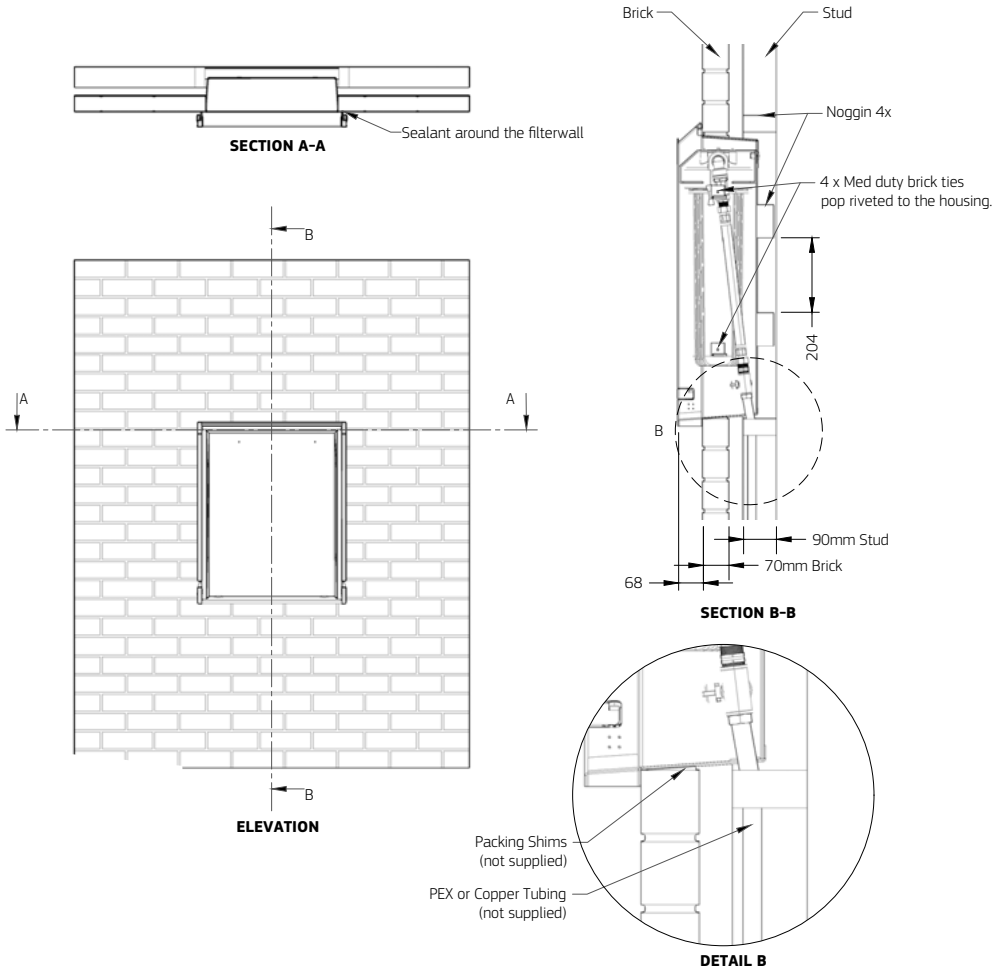


Fig. 7 - Builder Plans for 70mm Brick, Brick Tie

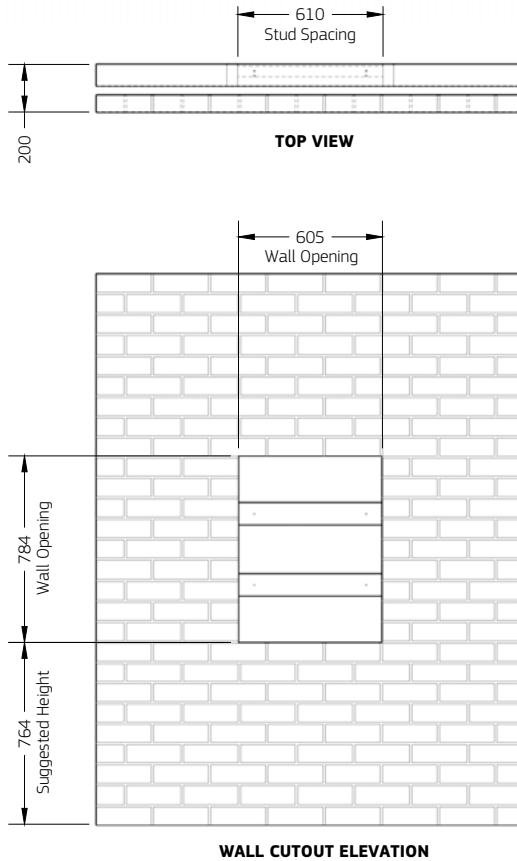




Note: All dimensions are shown in millimetres.

Disclaimer: Example installation shown, individual requirements may vary. Ensure Australian Building Standards are met during installation.

Fig. 8 - Builder Plans for 70mm Brick, Timber Fastener



Note: All dimensions are shown in millimetres.

Disclaimer: Example installation shown, individual requirements may vary. Ensure Australian Building Standards are met during installation.

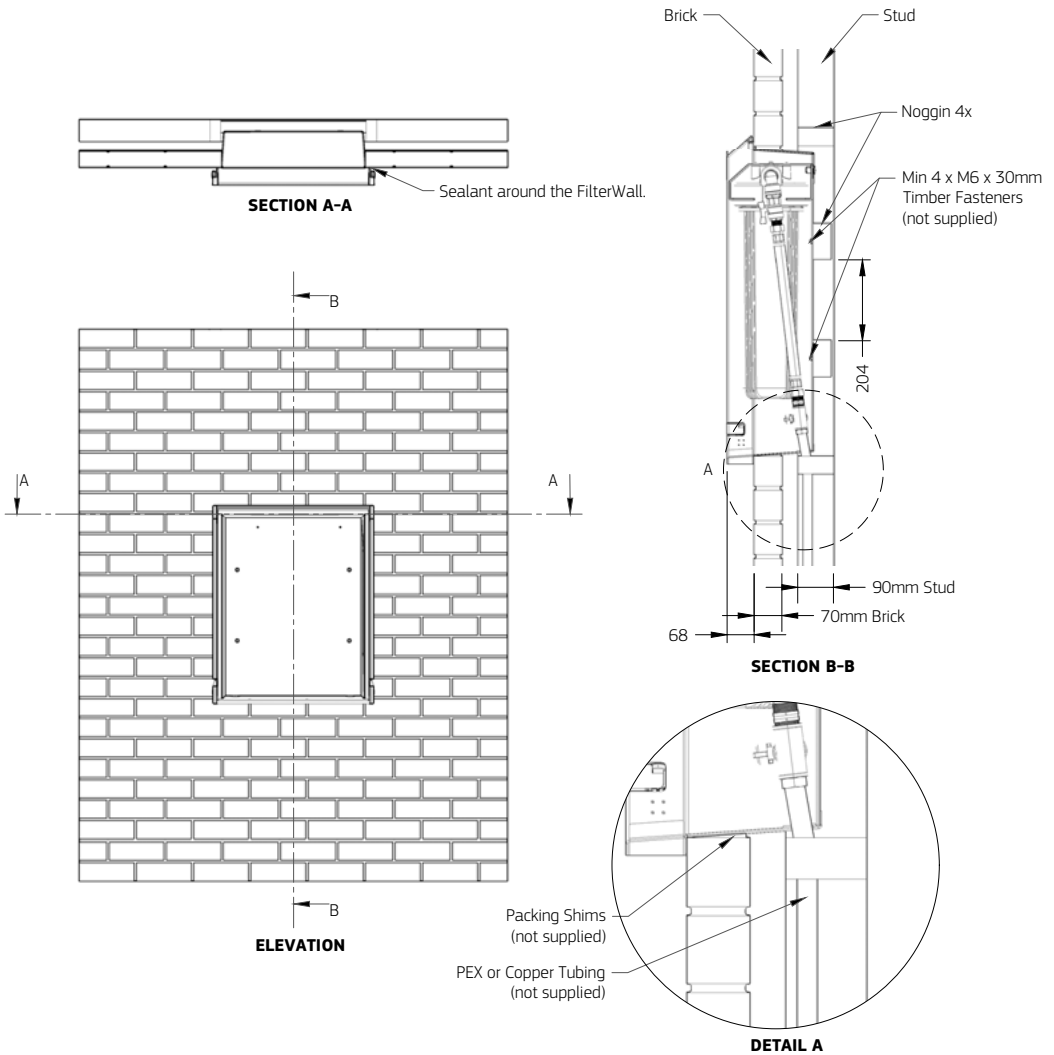
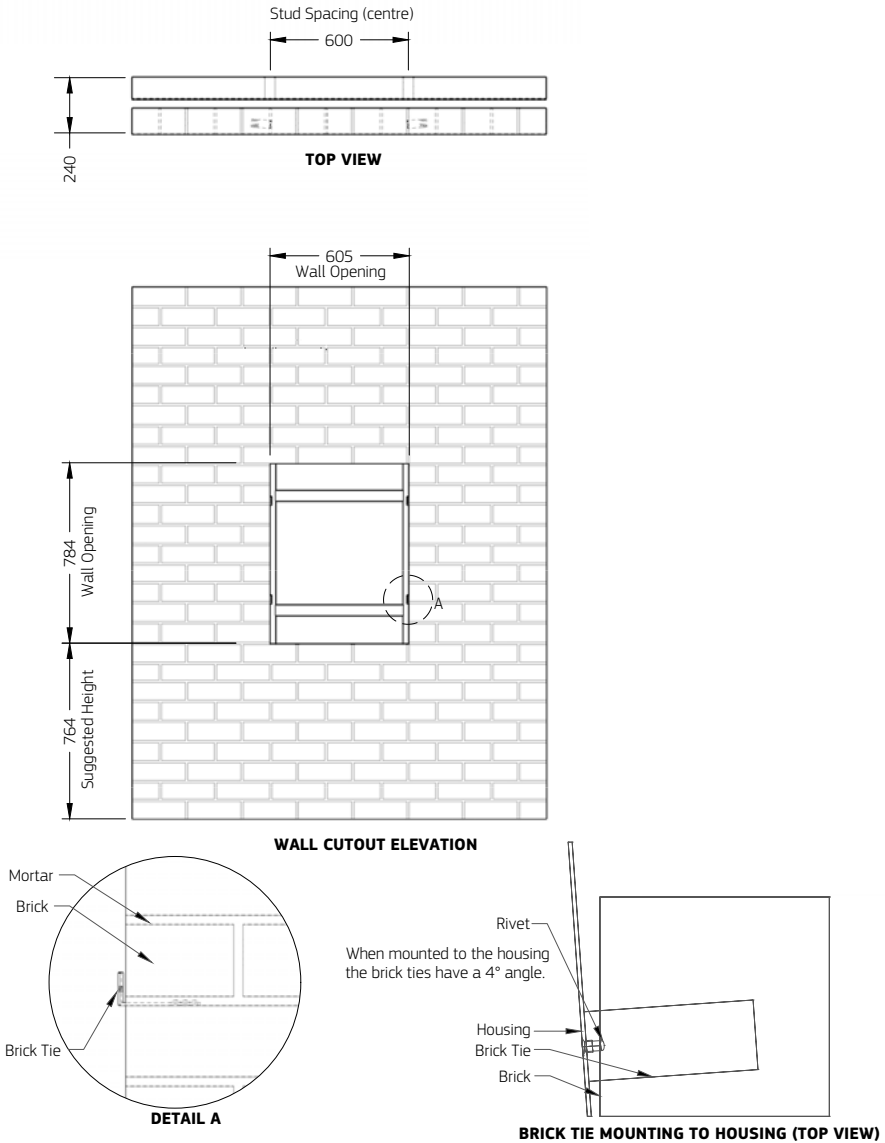
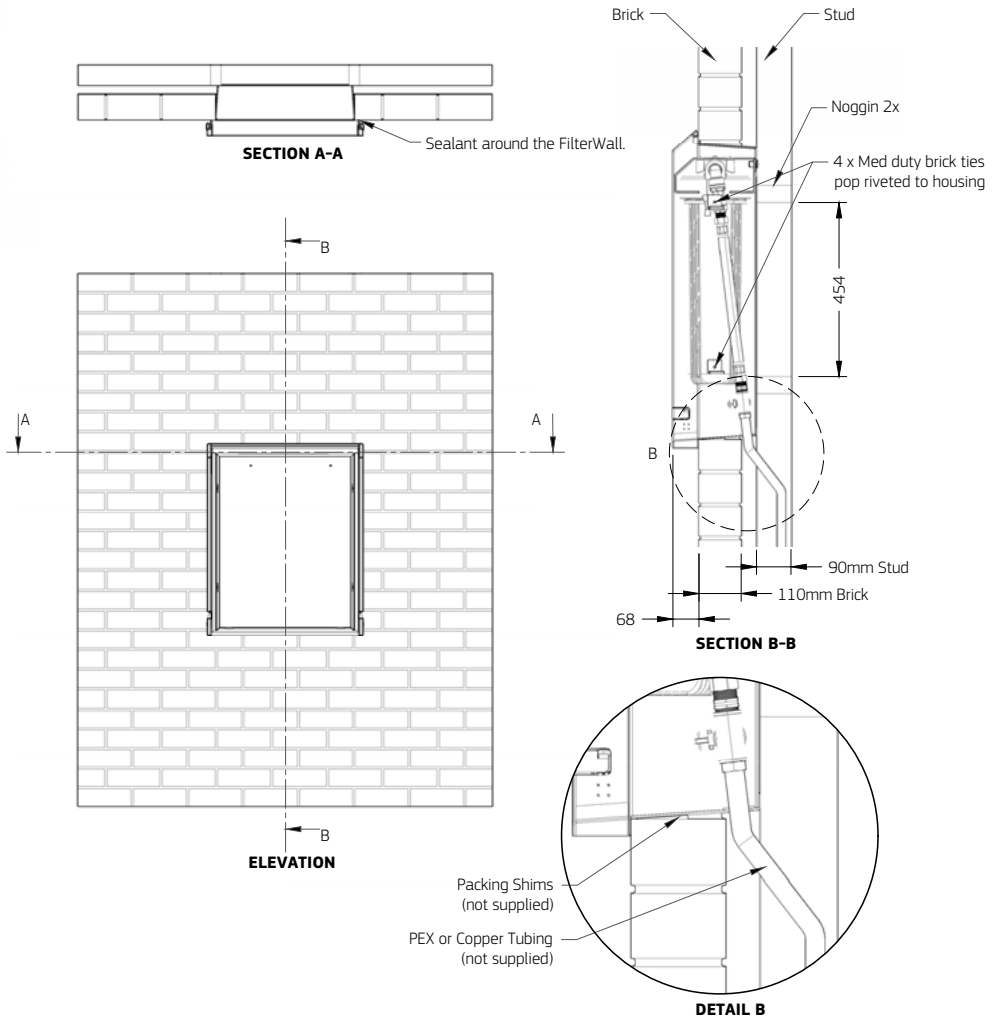


Fig. 9 - Builder Plans for 110mm Brick, Brick Tie

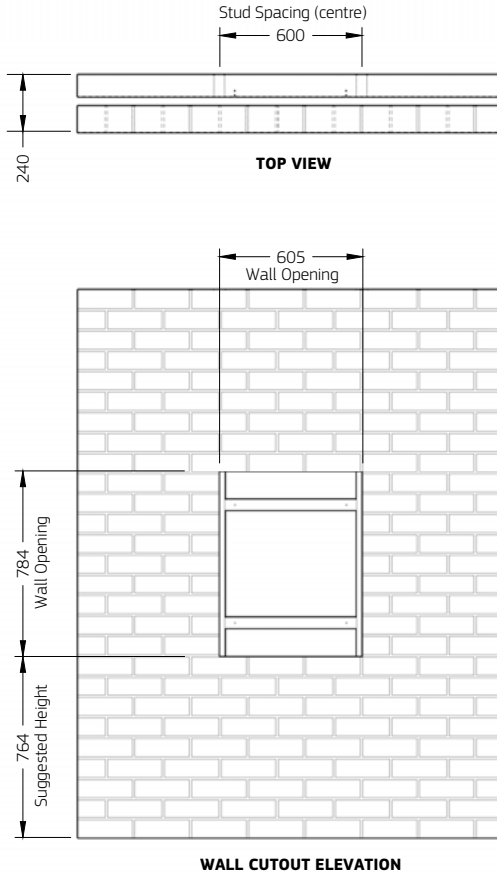




Note: All dimensions are shown in millimetres.

Disclaimer: Example installation shown, individual requirements may vary. Ensure Australian Building Standards are met during installation.

Fig. 10 - Builder Plans for 110mm Brick, Timber Fasteners



Note: All dimensions are shown in millimetres.

Disclaimer: Example installation shown, individual requirements may vary. Ensure Australian Building Standards are met during installation.

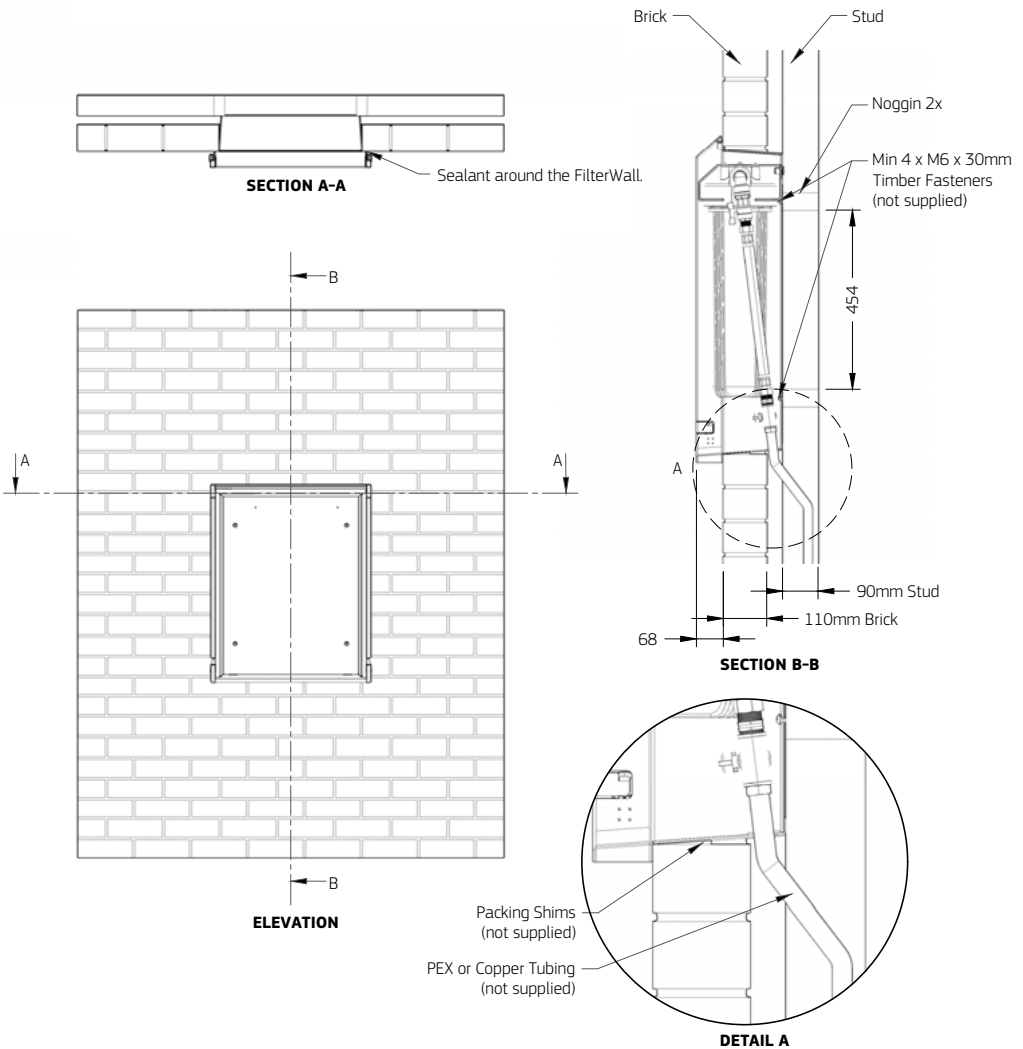
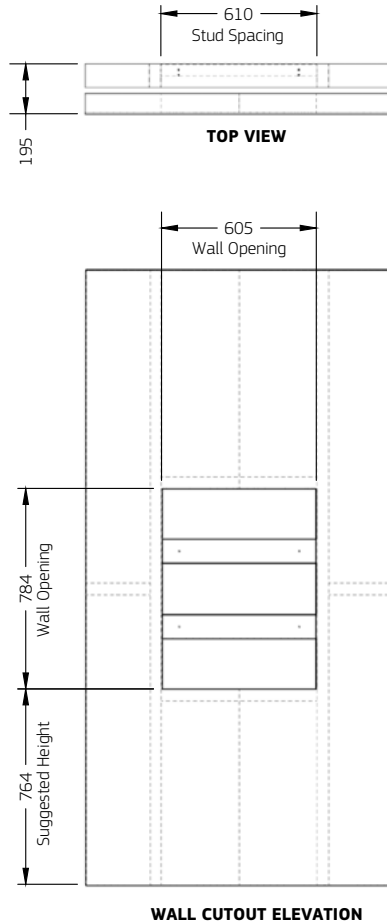
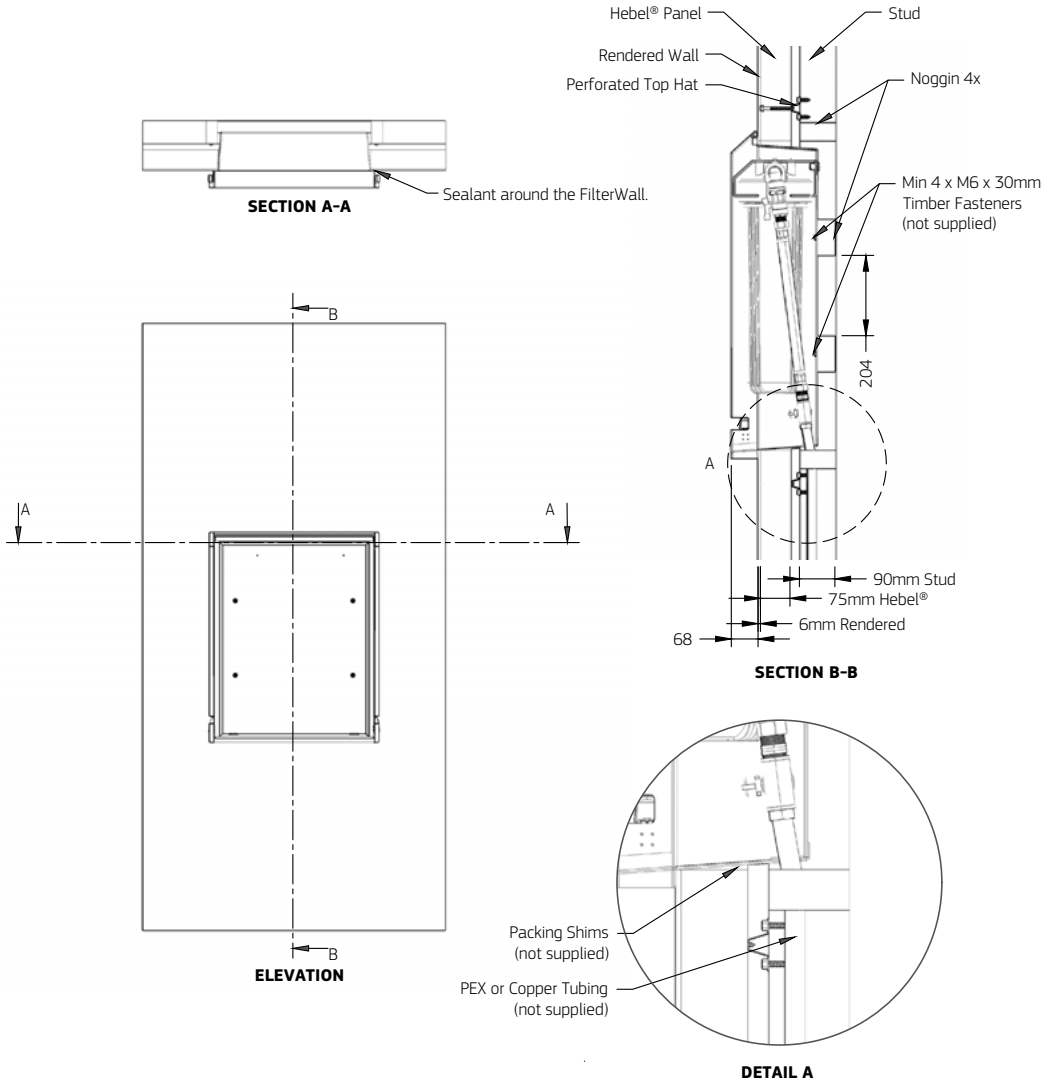


Fig. 11 - Builder Plans for Hebel[®] Wall



Note: All dimensions are shown in millimetres.

Disclaimer: Example installation shown, individual requirements may vary. Ensure Australian Building Standards are met during installation. Hebel[®] is a registered trademark of Xella Group.



Installation Instructions - Enclosure

The following instructions are a guide only. The installer is responsible to ensure it complies with any local regulations that may be applicable for this type of installation.

When selecting an installation location; the enclosure and system should be protected from harsh environments where overexposure to excessive heat, direct sunlight, saltwater spray, snow, direct contact with water and freezing conditions can occur.

Installation must be in a well-supported and level position, within a flat and level wall (refer to Builder Plans).

1. Remove the outer packaging.
2. Check the front panel of the enclosure for any damage (including latches) that may have occurred during transit.
3. Unlock the latches on the front panel and remove the front cover (keys supplied in the spanner bag).
4. Inspect the filtration assembly for any damage that may have occurred during transit.
5. Remove the filter assembly from the enclosure by pushing up on the filter bracket and pulling the filter assembly forward over the mounting studs.

The filter assembly should be stored in a secure location and installed when the other plumbing fixtures (hot water service, etc.) are fixed in the building. The FilterWall carton has been designed to keep the filter assembly safe until it is ready to be installed.

6. Install the enclosure within the housing frame (refer the Builder Plans that best suit your installation) and in line with the incoming mains water line.
7. Feed the mains water inlet pipe (Copper or PEX) through the entry protrusion on the LEFT side of the enclosure.
8. Feed the mains water outlet pipe (Copper or PEX) through the exit protrusion on the RIGHT side of the enclosure.
9. Temporarily bridge the inlet and outlet connections (fittings not supplied) if Filter Assembly is to be installed at a later date.

Installation Instructions - Filter Assembly

Remove the filter cartridges from the filter bowls before installing and testing the filter assembly. This will ensure the filter capacity and performance won't be impacted prior to the homeowner residing in the dwelling.

1. Hang the filter assembly including the preassembled valve and pipework on the mounting studs.
2. Check the supplied connections are secure.
3. Remove the temporary bridging piece as installed in step 9 of the enclosure installation instructions.
4. Use approved 20mm (Copper, PEX or other suitable) fitting to connect to the mains water inlet line to the system inlet.
5. Use approved 20mm (Copper, PEX or other suitable) fitting to connect to the treated mains water line on the system outlet.
6. Ensure free operation of the inlet, outlet and bypass assembly ball valves by rotating the valve handles between OPEN and CLOSE 2-3 times. Ensure all 3 are left in the OPEN position.
7. Ensure the filter bowls are firmly connected to the head assembly by using the supplied spanner to firmly tighten, DO NOT OVERTIGHTEN.
8. With a downstream tap open, turn on the water supply to purge air from the system.
9. Once purged, turn the bypass shut off valve to the CLOSE position, then turn off the downstream tap.
10. Inspect the system connections for leaks. Be sure to check all the connections including the bypass assembly. Retighten any joints as required and retest.
11. (For new house installs only) Once the system has been verified, turn the water supply off or isolate the system by turning the inlet shut off valve to CLOSE.

Installation Instructions - Filter Cartridges

The filter Cartridges should only be installed when the water inside the home is going to be used on a daily basis.

1. Isolate the water supply by ensuring the inlet shut off valve is in the CLOSE position. If the water supply was on, open up a downstream tap to relieve pressure to the system.
2. Ensure the bypass shut off valve is in the CLOSE position and turn the outlet shut off valve into the CLOSE position.

3. Unscrew the filter bowls, using the spanner provided. **CAUTION:** Bowls will be heavy.
4. Remove all packaging from the cartridges supplied with the system, including any wraps.
5. Place each cartridge into the filter bowl (see parts diagram for cartridge order), ensuring the cartridges are centrally located in the bowl.
6. Hold each filter bowl upright from the bottom of the bowl while screwing into the filter head. Ensure the spigot in each housing head is located centrally to the cartridge to make a good seal and hand-tighten the bowl until firm. Use the supplied spanner to secure firmly (approx 1/4 turn), **DO NOT OVERTIGHTEN.**
7. Turn on the water supply by returning the inlet and outlet shut off valves to the OPEN position.
8. Check the system for leaks.
9. If leaks occur, repeat the steps to check cartridge alignment and bowl O-rings. If leaks persist, turn the inlet and outlet shut off valves to the CLOSE position and the bypass isolation to the OPEN position and call Puretec on 1300 140 140.

Note: Water will be unfiltered

10. When the system has been verified, allow the water to flow through the system by opening a downstream tap for 2 minutes to flush the system (this allows any air to be purged). Close the downstream tap. Your system is now ready for use.

Cartridge Replacement

To maintain high quality purified water, the filter cartridges need to be replaced every 6-12 months, depending on water quality and usage. An indication your filters need replacing is a decrease in water flow (filters are blocked with sediment and other containments) or bad taste and odour return. You can obtain replacement cartridges from your local Puretec dealer. To maintain performance standards and system warranty, use only genuine Puretec replacements.

Replacement Cartridge Codes;

Cartridge	Purpose	Size	Order Code
Polyspun	Sediment	20" x 4.5" MaxiPlus	PX05MP2
Carbon Block	Chemical, Taste & Odour	20" x 4.5" MaxiPlus	CB10MP2

Cartridge Replacement Procedure

1. Isolate the water supply by ensuring the inlet shut off valve is in the CLOSE position. Open up a downstream tap to relieve pressure to the system.

2. Unscrew the filter bowls, using the spanner provided. **CAUTION:** Bowls will be heavy.
3. Remove and discard the used cartridges according to local laws.
4. Clean the bowls with soap and warm water, then rinse thoroughly.
5. Check the O-rings for damage and lubrication. If necessary, apply a light coating of food grade silicone lubricant (or similar).

Note: Puretec recommends replacing the O-rings every 3-5 years to ensure the seal remains watertight and prevents any leaks.

Replacement O-ring ordering code: **MPOR-G**

6. Remove all packaging from the cartridges, including any wraps.
7. Place each cartridge into the filter bowl (see parts diagram for cartridge order), ensuring the cartridges are centrally located in the bowl.
8. Hold the each filter bowl upright from the bottom of the bowl while screwing into the filter head. Ensure the spigot in each housing head is located centrally to the cartridge to make a good seal and hand-tighten the bowl until firm. Use the supplied spanner to secure firmly (approx 1/4 turn), **DO NOT OVERTIGHTEN**.
9. Turn on the water supply by returning the inlet and outlet shut off valves to the OPEN position.
10. Check the system for leaks.
11. If leaks occur, repeat the steps to check cartridge alignment and bowl O-rings. If leaks persist, turn the inlet and outlet shut off valves to the CLOSE position and the bypass isolation to the OPEN position and call Puretec on 1300 140 140.

Note: Water will be unfiltered

12. When the system has been verified, allow the water to flow through the system by opening a downstream tap for 2 minutes to flush the system (this allows any air to be purged). Close the downstream tap. Your system is now ready for use.

Bypass Shut Off Valve

The bypass shut off valve should only be used during system failure/repair OR if the water supply cannot be disrupted. Using the bypass will mean the incoming water to the home/building will be unfiltered.

Warranty

Any claim under this warranty must be made within 10 years of the date of purchase of the product. This product is warranted to be free of defect of material and workmanship for 10 years from date of purchase.

Puretec is renowned for its quality and after-sales support so if you have any issues please call 1300 140 140 (AU) or 0800 130 140 (NZ). To make a warranty claim, contact us directly or the place of original purchase. All costs relating to a warranty claim must be approved by Puretec prior to any work being carried out.

10 year warranty is 1 year parts and labour plus 9 years parts only. Excludes cartridges. Puretec will pay your reasonable, direct expenses of claiming under this warranty. You may submit details and proof of your expense claim to place of purchase for consideration.

The warranty only applies if the product was used and/or installed in accordance with the user guide and/or installation instructions. This warranty is given in lieu of all other express or implied warranties and manufacturer shall in no circumstance be held liable for damages consequential or otherwise or delays caused or faulty manufacturing except as excluded by law.

Applicable to all above, is that the warranties need to be approved by Puretec to ensure product was not incorrectly used, installed or claimed. False and incorrect claims will be pursued at Puretec's discretion, including chargeable inspection and labour costs incurred.

Warranty/Australia

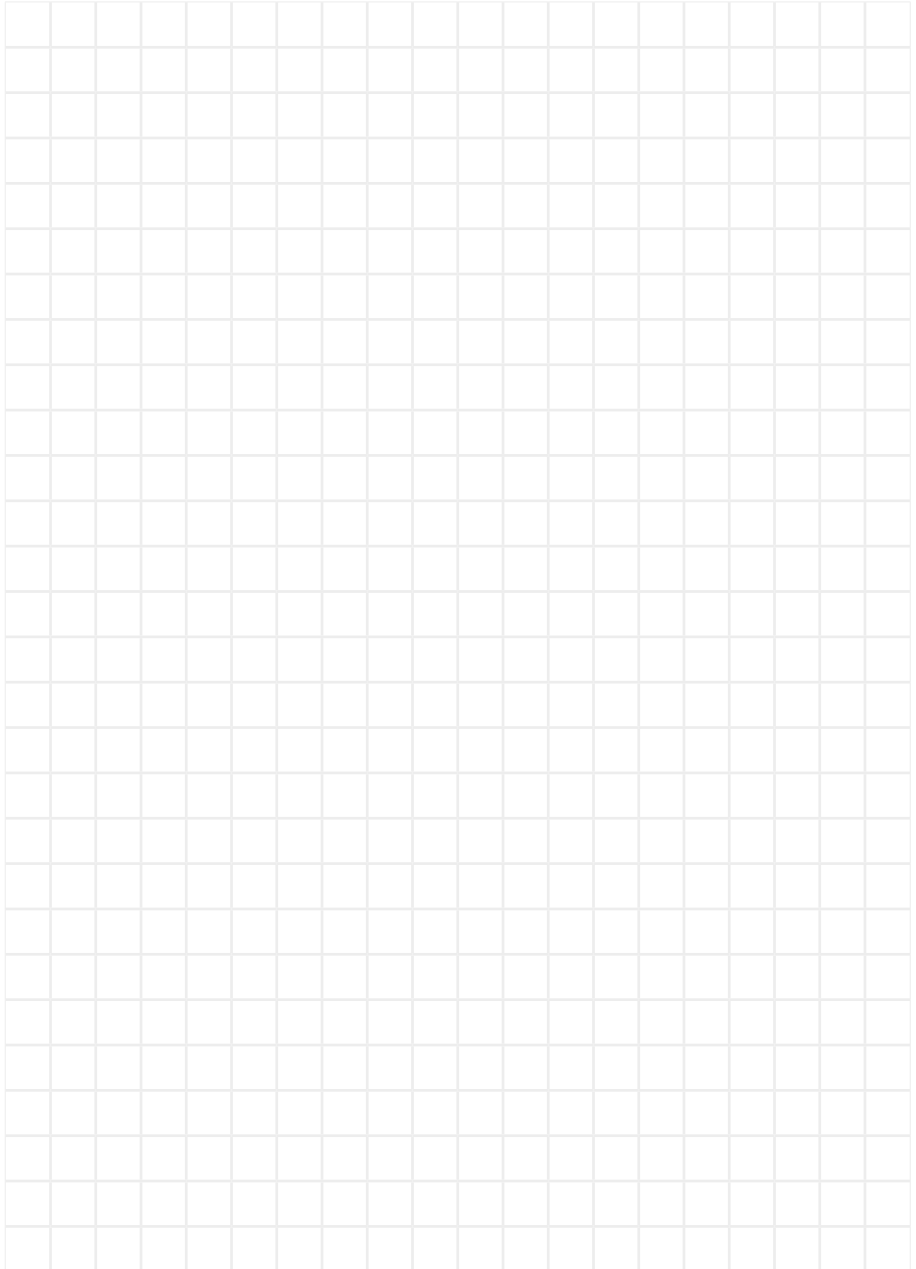
This warranty is given by Puretec Pty Ltd, ABN 44 164 806 688, 37-43 Brodie Road, Lonsdale SA 5160, telephone no. 1300 140 140 and email at sales@puretec.com.au.

This warranty is provided in addition to other rights and remedies you have under law: Our goods come with guarantees which cannot be excluded under the Australian Consumer Law. You are entitled to replacement or refund for a major failure and to compensation for other reasonably foreseeable loss or damage. You are also entitled to have the goods repaired or replaced if the goods fail to be of acceptable quality and the failure does not amount to a major failure.

Warranty/New Zealand

This warranty is given by Puretec NZ LP, Reg. No 50081773, PO Box 875 Cambridge 3450 NZ, telephone no. 0800 130 140 and email at sales@puretec.co.nz.

This warranty is provided in addition to other rights and remedies you have under law: Our goods come with guarantees which cannot be excluded under the Consumer Guarantees Act. You are entitled to replacement or refund for a major failure and to compensation for other reasonably foreseeable loss or damage. You are also entitled to have the goods repaired or replaced if the goods fail to be of acceptable quality and the failure does not amount to a major failure.





MAR2023

AUSTRALIA

P 1300 140 140

E sales@puretec.com.au

W puretec.com.au

NEW ZEALAND

P 0800 130 140

E sales@puretec.co.nz

W puretec.co.nz